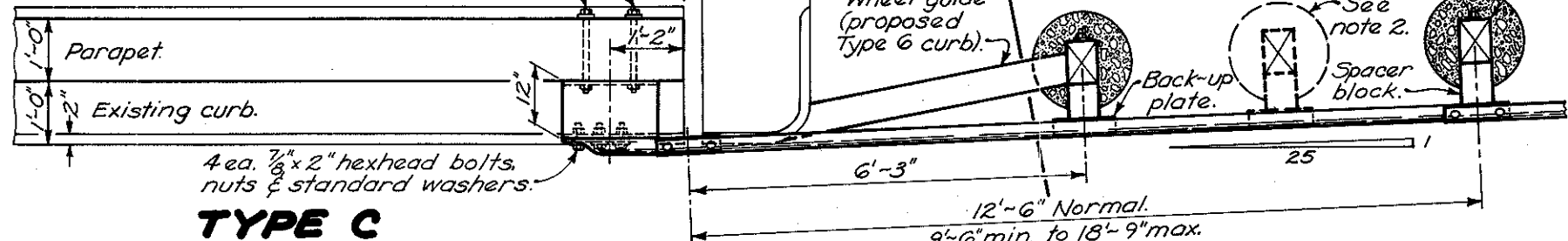


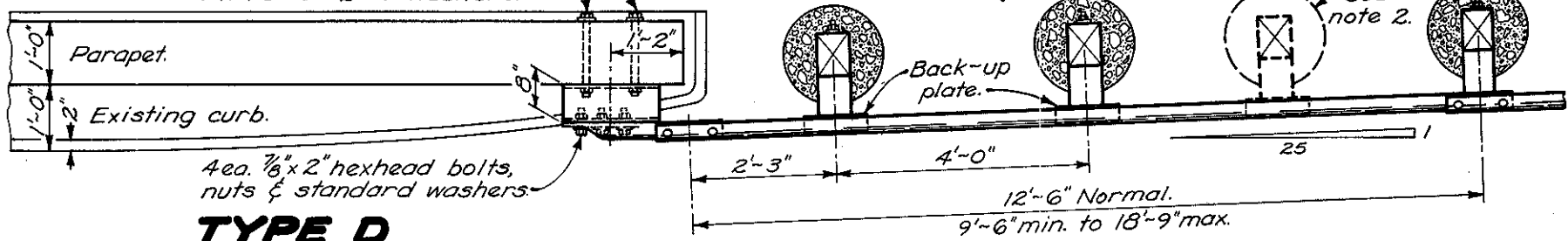
SECTION A-A

1"x15" hexhead bolts & nuts with 3"x3"x1/2" PL washers.



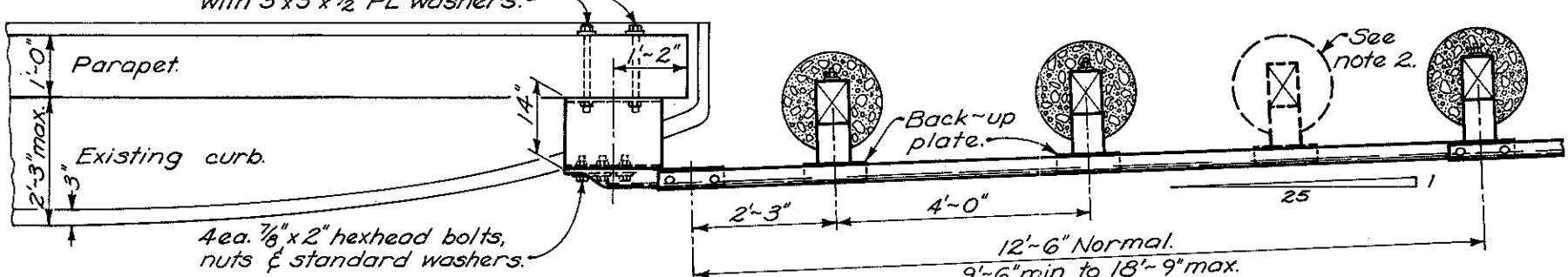
TYPE C

1"x15" hexhead bolts & nuts with 3"x3"x1/2" PL washers.



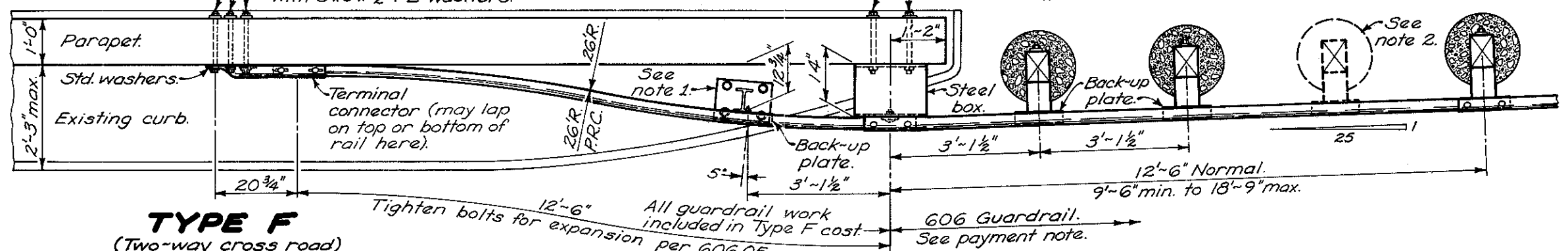
TYPE D

1"x15" hexhead bolts & nuts with 3"x3"x1/2" PL washers.



TYPE E

7/8"x14" hexhead bolts & nuts with 3"x3"x1/2" PL washers.



TYPE F
(Two-way cross road)

Tighten bolts for expansion per 606.05.
All guardrail work included in Type F cost.
606 Guardrail. See payment note.

NOTES

PAYMENT for item 606, each, Bridge terminal assembly, Type —, shall include the additional cost in excess of normal guardrail cost, such as: additional or heavier posts, concrete encasement, extra rail, steel box, curb, embankment, terminal connector, anchors and other hardware, etc.

FOR DETAILS not shown, see GR-1 and other Standard Construction Drawings pertaining to design of specific guardrail type.

GUARDRAIL TERMINATION as directed by the Engineer. The 12'-6" normal rail section may vary as shown to facilitate connection of or reconstruction of existing approach guardrail. The 1'-2" terminal connector location dimension may be increased to avoid existing parapet steel.

STEEL BOX of the appropriate size, galvanized after welding any two opposite corners, shall be mounted on the parapet so the rail top is 27" above the bridge deck.

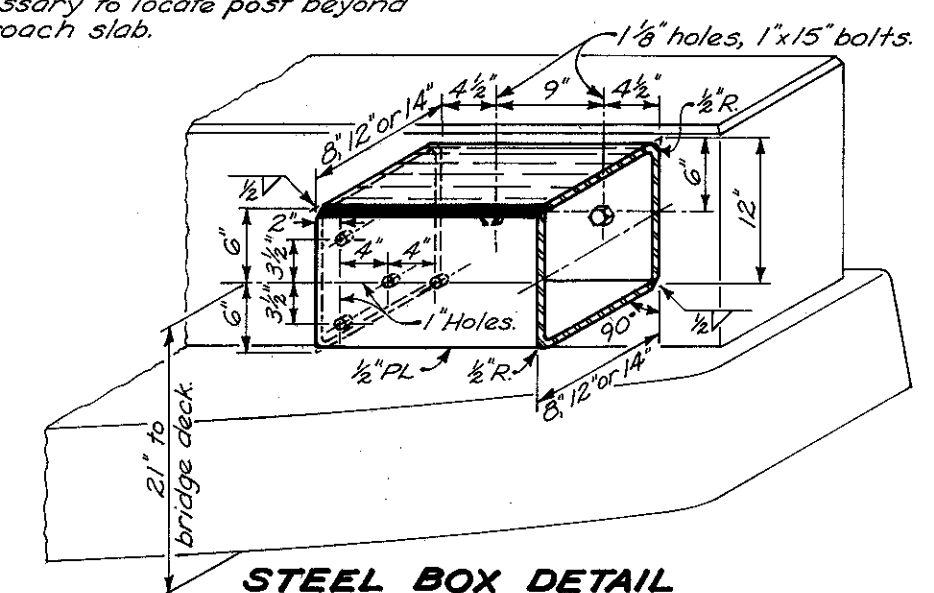
SPACER BLOCK size may be increased if necessary to locate post beyond wide approach slab.

POSTS shall be 6"x8" wood or W6x15.5 steel (except note 1 post) of the same material type as used on approach guardrail, with 4 minimum concrete encasement.

NOTE 1: Use W6x8.5 inlet mounted post as detailed on GR-1 with length to mount rail top 27" above bridge deck.

NOTE 2: Place one additional encased post halfway between adjacent posts when the 12'-6" normal rail section is increased.

SELF-DRILLING ANCHORS meeting requirements of 712.01 with 7/8"x1 1/2" bolts, or 1" anchors per FF-S-325 Group II, Type 4, Class 1 or 2 with proof load certification per 712.01 may be substituted (in like diameter) for the 7/8" and 1" bolts shown in the parapets. Anchor installations not satisfactory to the Engineer shall be replaced with bolts as shown extending through the parapet or as directed by the Engineer.



STEEL BOX DETAIL

BUREAU OF LOCATION AND DESIGN OHIO DEPARTMENT OF TRANSPORTATION	
BRIDGE TERMINAL ASSEMBLIES	
STANDARD CONSTRUCTION DRAWING	GR-3A
APPROVED <i>[Signature]</i> ENGR., L. & D.	
DATE 12-6-76	