

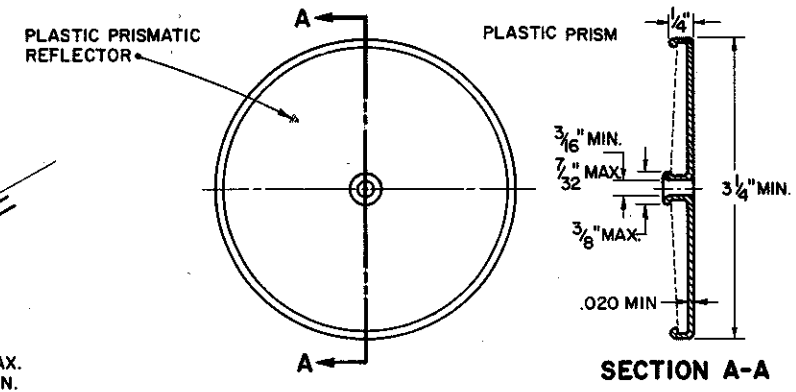
○ = TYPE A DELINEATORS, COLORLESS
 ■ = TYPE D DELINEATORS, YELLOW

TYPICAL DELINEATOR PLACEMENT

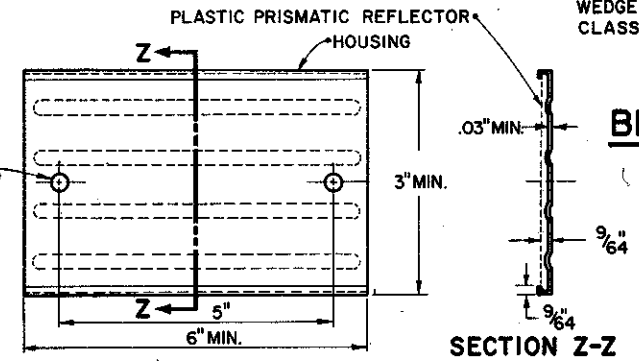
SPACING ON RAMP HORIZONTAL CURVES

RADI (feet)		DEGREE OF CURVE	SPACING ON CURVE	* TRANSITION SPACING	
FROM	TO				
TANGENT	1,801	3	100'	100'	100'
1,800	1,401	4	80'	100'	100'
1,400	1,001	5	70'	100'	100'
1,000	751	7	60'	100'	100'
750	551	9	50'	80'	100'
550	326	15	40'	70'	100'
325	—	25	30'	60'	100'

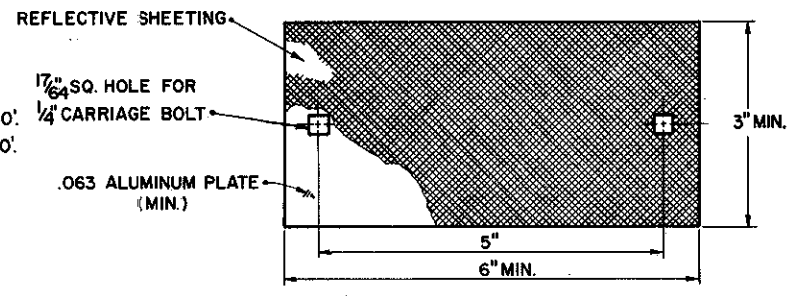
* FROM TANGENT TO 9° CURVE, TRANSITION SPACING = 100' TO 80' TO 50'.
 FROM 15° CURVE TO TANGENT, TRANSITION SPACING = 40' TO 70' TO 100'.



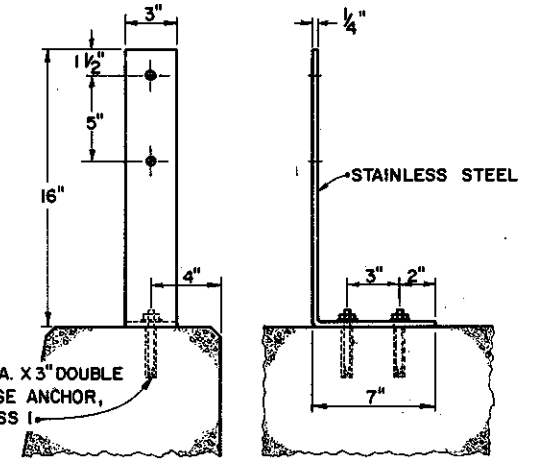
TYPE "A" DELINEATOR



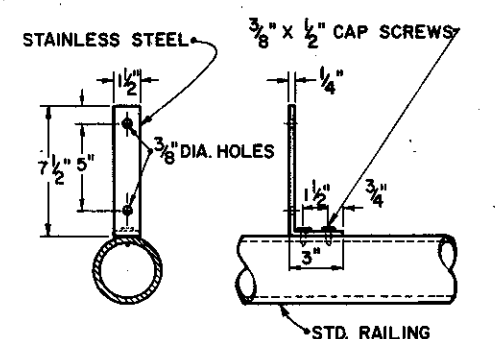
TYPE "D" DELINEATOR



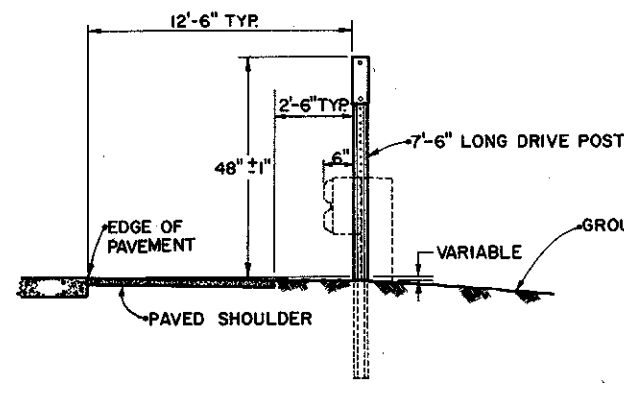
TYPE "D" DELINEATOR



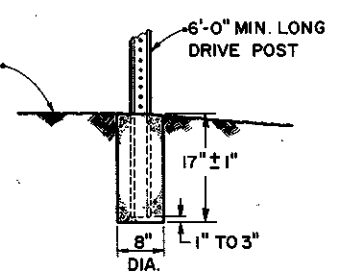
BRIDGE PARAPET BRACKET



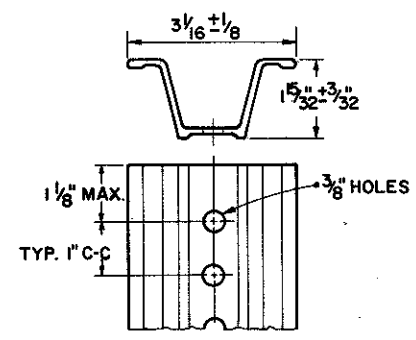
BRIDGE RAIL BRACKET



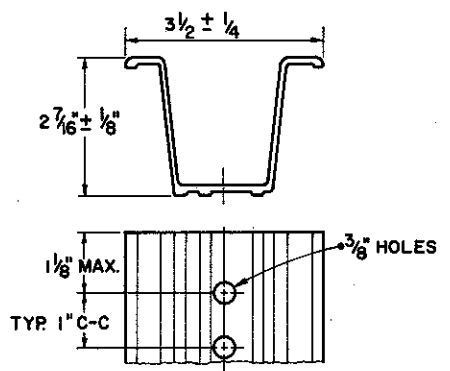
LATERAL PLACEMENT



ALTERNATE CONCRETE EMBEDMENT



NO. 2 STEEL DRIVE POST



NO. 2 ALUMINUM DRIVE POST

NOTES:

1. TYPE "A" DELINEATORS SHALL BE SPACED ON THE RIGHT OF THE THROUGH ROADWAY AT 200-FOOT INTERVALS WITHOUT REGARD TO CURVES.
2. WHEN CROSSING FROM LEFT TO RIGHT OR FROM RIGHT TO LEFT ON THE RAMPS, THE DELINEATORS AT THE POINT OF CROSSOVER SHALL BE AT THE SAME STATION LOCATION ON EACH SIDE.
3. NO DELINEATORS SHALL BE PLACED IN A PAVED BERM.
4. WHEN THE DEGREE OF CURVATURE ON RAMPS REQUIRES 100-FOOT SPACING, THE DELINEATORS SHALL BE PLACED ON THE RIGHT IN RELATION TO THE FLOW OF TRAFFIC. WHEN THE DEGREE OF CURVATURE ON RAMPS REQUIRE LESS THAN 100-FOOT SPACING, THE DELINEATORS SHALL BE PLACED ON THE OUTSIDE OF THE CURVE IN RELATION TO THE FLOW OF TRAFFIC.
5. TAMPER RESISTANT FASTENERS SHALL BE USED TO ATTACH DELINEATORS TO DRIVE POSTS OR BRACKETS.

REFERENCE SHALL BE MADE TO C&M SPECIFICATION ITEM 620.

BUREAU OF DESIGN SERVICES DIVISION OF HIGHWAYS	
OHIO DEPARTMENT OF TRANSPORTATION	
TRAFFIC CONTROL	DATE
DELINEATOR DETAILS	12/1/75
STANDARD CONSTRUCTION DRAWING TC-61.10	
APPROVED: <i>[Signature]</i> Engineer of Design Services	