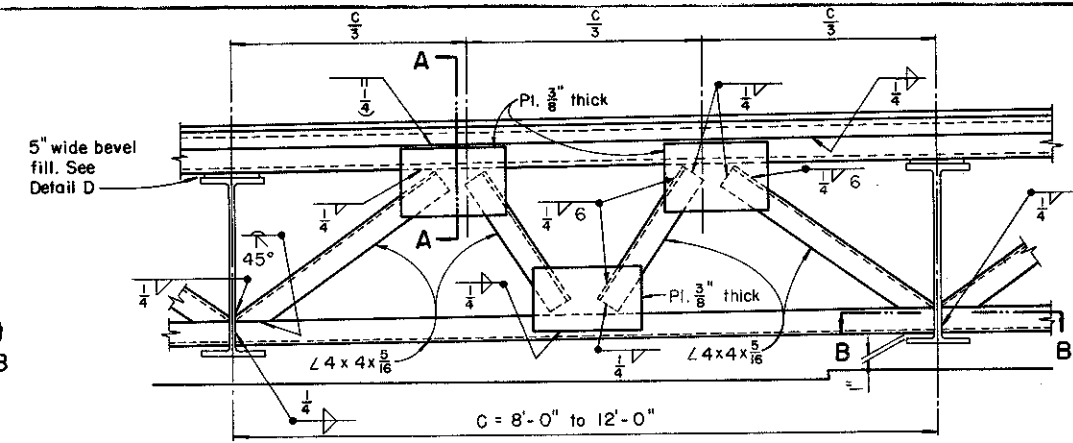
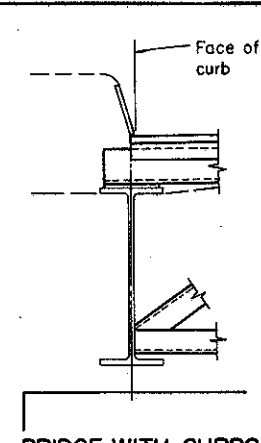


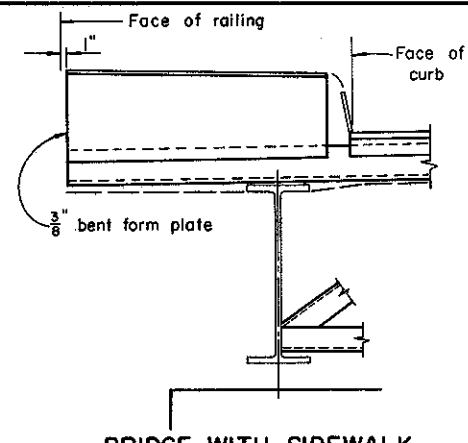
END CROSSFRAME
For beam spacing of 8'-0" or less measured parallel to end dam.



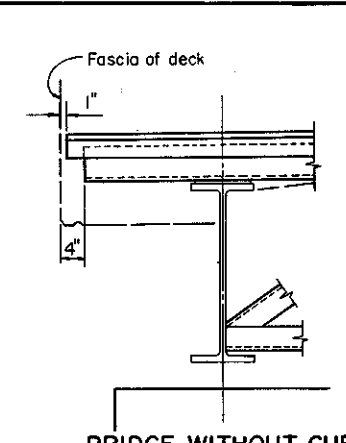
END CROSSFRAME
For beam spacing of 8'-0" to 12'-0" measured parallel to end dam.



BRIDGE WITH CURBS

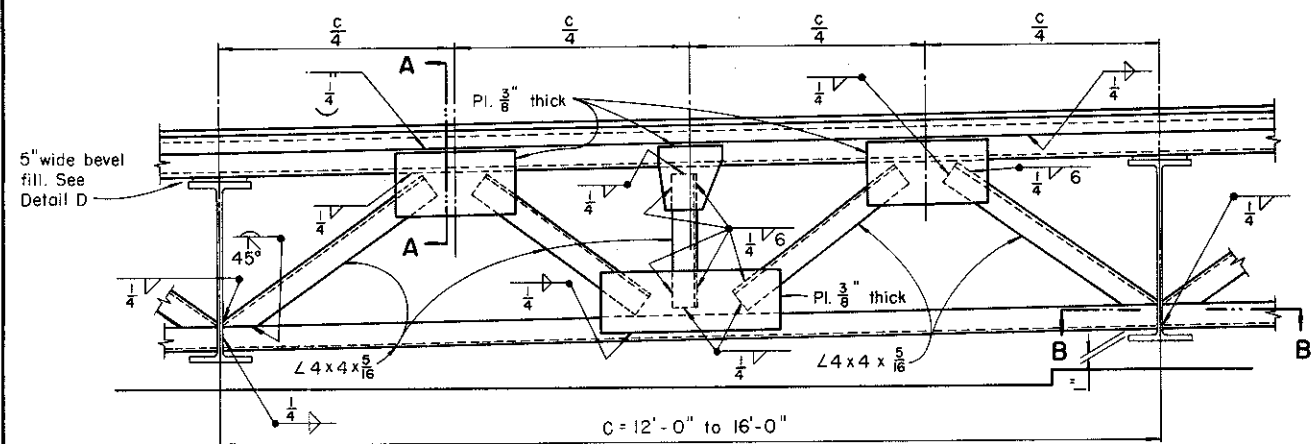


BRIDGE WITH SIDEWALK

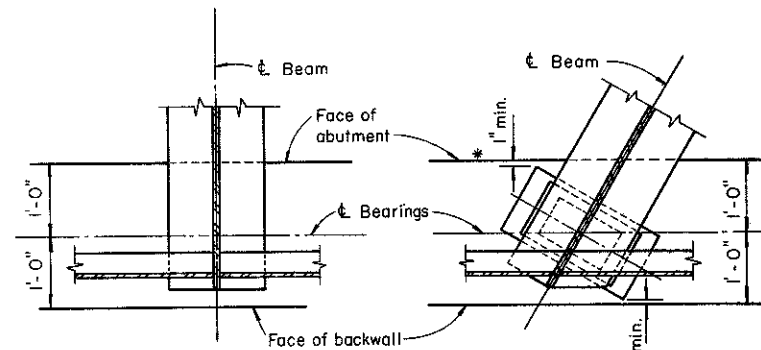


BRIDGE WITHOUT CURBS

END DAM DETAILS AT FASCIA BEAM
(For additional details see Sheet No.2)



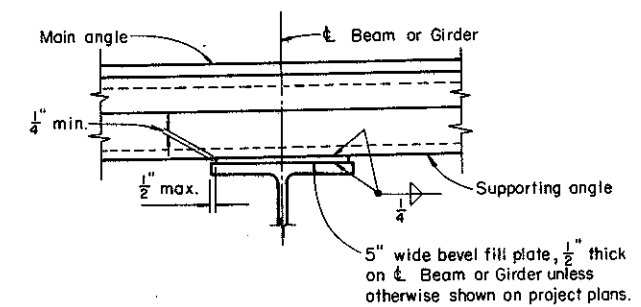
END CROSSFRAME
For beam spacing of 12'-0" to 16'-0" measured parallel to end dam.



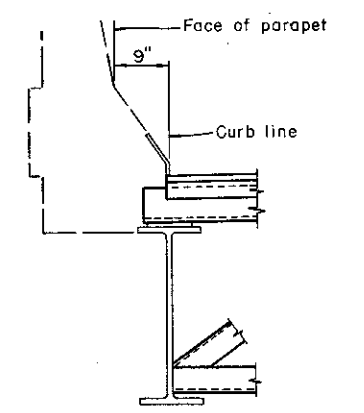
FOR SQUARE BRIDGES **FOR SKEWED BRIDGES**

SECTION B - B

* Where necessary, cope corner of masonry plate in order to maintain 1" clearance.



DETAIL D

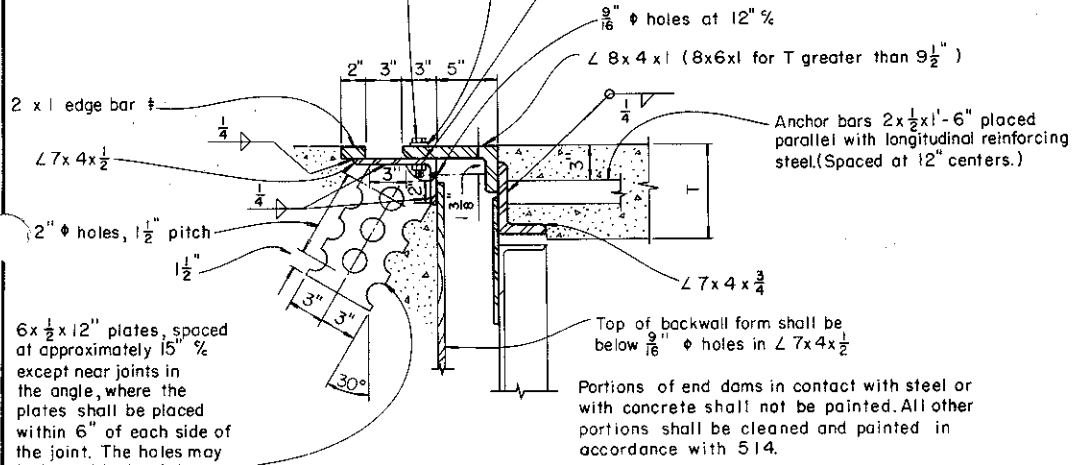


BRIDGE WITH ROADWAY PARAPET RAILING

A welded butt joint in the end dam, at the apex of roadway, will be required for that portion of the end dam attached to the superstructure. The portion attached to the backwall shall be placed in segments not less than 6'-0" in length, with a joint at each joint in the backwall and with one of the joints at the apex of roadway. These shall be closely butted but shall not be welded.

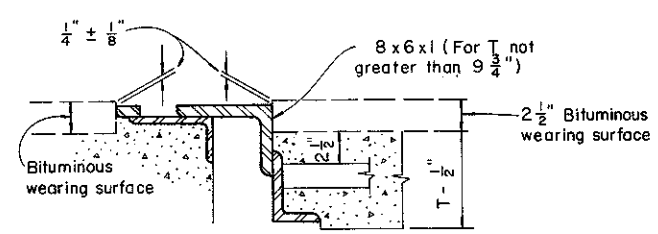
3/8" x 2" bolts at not more than 2'-0" with nuts tack-welded to under side of lower angle. 1/8" holes in upper angle. Center 5/8" bolts in 1/8" holes. Apply flake graphite between washers and angle. Turn bolts tight and release one-half turn. Remove bolts as soon as concrete has set, preferably within two hours after placing, to avoid damage due to temperature expansion or contraction of superstructure. Fill holes with bituminous material.

Steel washers
This contact surface shall not be painted but shall be cleaned and lubricated with flake graphite in the field immediately prior to placing of backwall concrete.



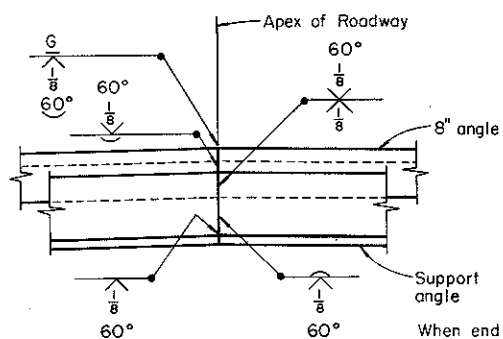
SECTION A - A
SHOWING ROADWAY END DAM FOR MONOLITHIC WEARING SURFACE

† Furnish different thickness if required to compensate for grades in excess of 2%.



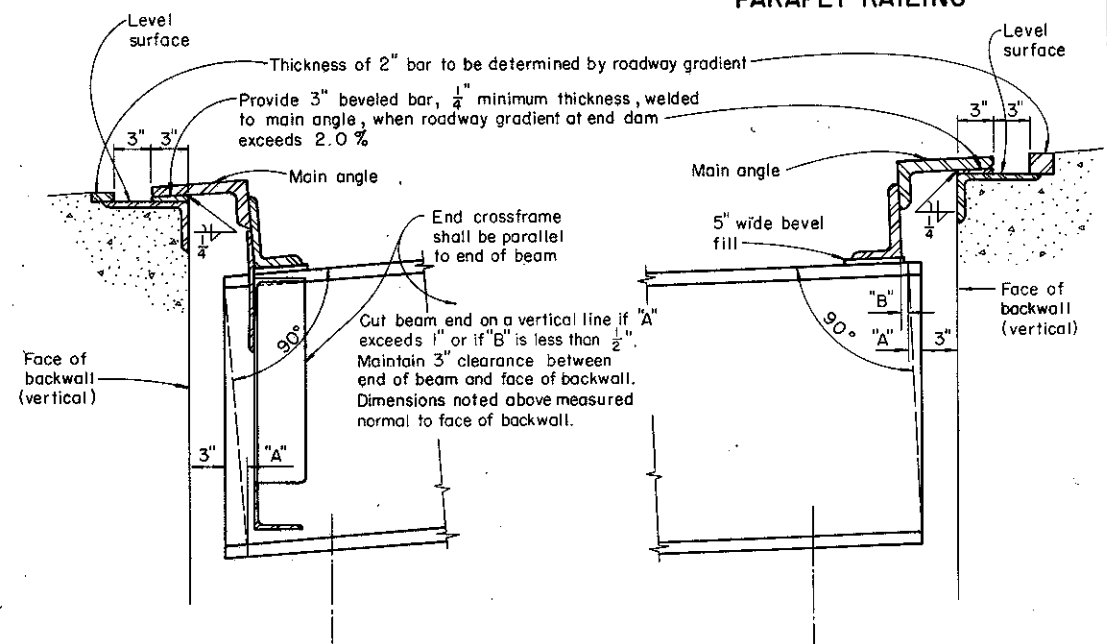
SECTION A - A
SHOWING ROADWAY END DAM FOR BITUMINOUS WEARING SURFACE

Same as SECTION A-A for monolithic wearing surface except as shown.



WELDED BUTT JOINT IN SUPERSTRUCTURE END DAM

When end dam contains no apex, a butt joint may be furnished near the centerline of the deck, if necessary to facilitate handling and shipping.



LONGITUDINAL SECTION BRIDGE ON GRADE

STATE OF OHIO DEPARTMENT OF HIGHWAYS DIVISION OF DESIGN AND CONSTRUCTION BUREAU OF BRIDGES		DRAWING NUMBER SD-1-69	
STANDARD SUPERSTRUCTURE DETAILS FOR STEEL BEAM AND GIRDER BRIDGES			
APPROVED: <i>C. H. Albrecht</i>	ENGINEER OF BRIDGES		SHEET NO. 1 OF 4 SHEETS
DATE: 6-12-69	CHECKED: WJJ	REVIEWED: CDB RVH BFG	
PREPARED: FFE	TRACED: NRB		