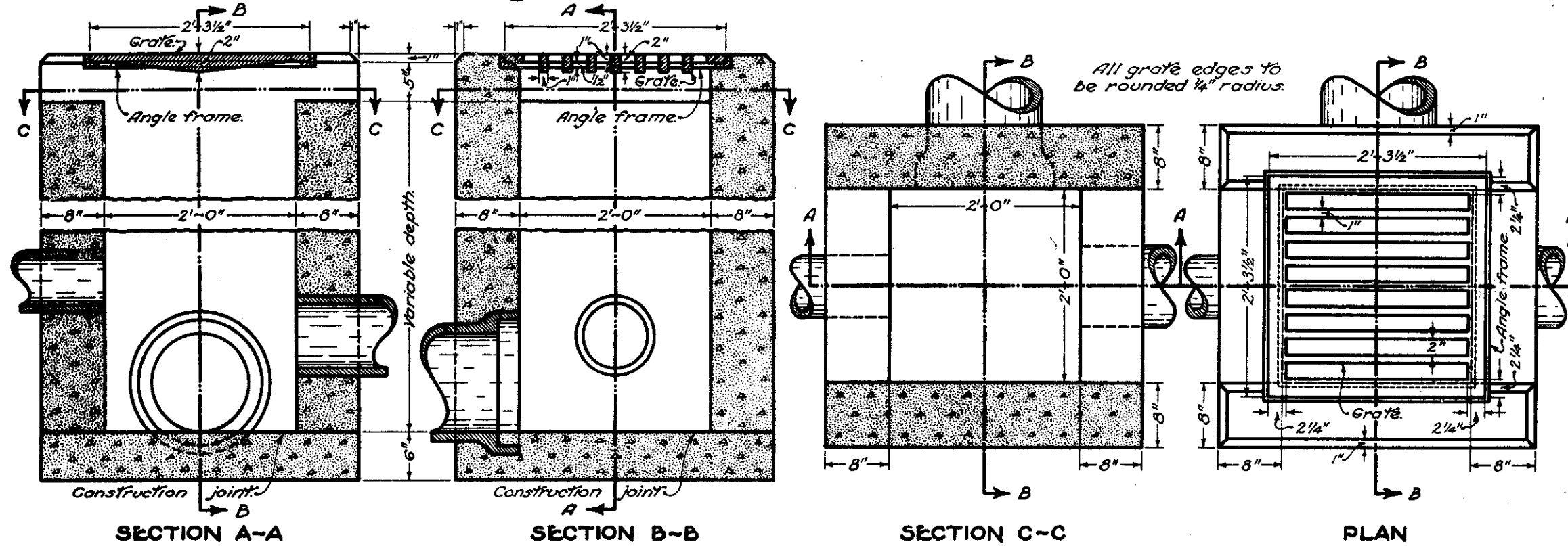


# STANDARD NO. 2-2-A CATCH BASIN



## NOTES

GRATING AND FRAME shall meet the requirements of 604. The design shall be essentially the same and equally as strong as the one shown hereon.

Weight of grate, minimum, 120 lbs.  
Weight of frame, minimum, 40 lbs.  
CONCRETE cast in place to be Class "C".

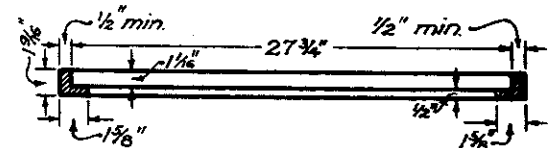
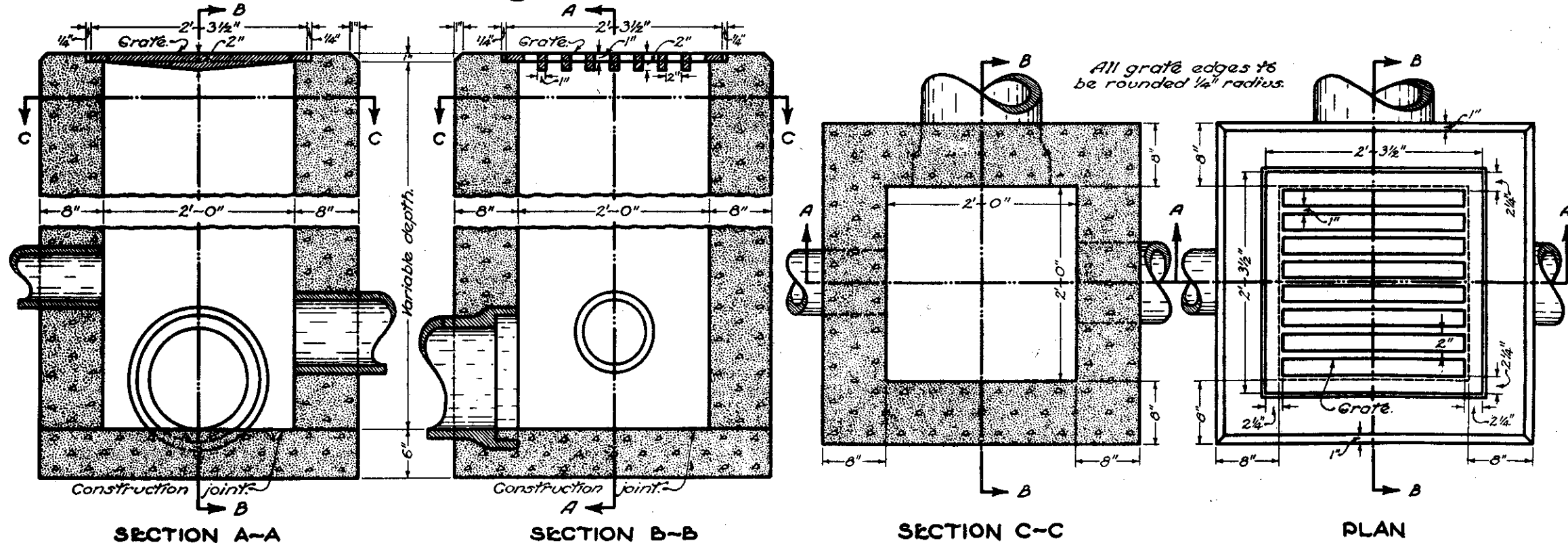
BRICK OR CONCRETE BLOCK side walls, when used in place of concrete, shall be 8 inches nominal thickness. When brick or concrete blocks are used the walls of the catch basin above the flow line of the side opening shall be constructed of Portland Cement concrete.

2-2-A SIDE INLETS to be placed 4 to 6 inches below normal elevations of median or ditch flow line returning to normal 10 feet each side of basin.

2-2-B GRATE elevation to be placed 4 to 6 inches below normal ditch returning to normal 10 feet each side of basin.

SIDE INLETS shall be provided on both sides of the No. 2-2-A catch basin in sags and on up-stream side only where the ditch has a continuous down grade past the catch basin.

# STANDARD NO. 2-2-B CATCH BASIN



SECTION THROUGH ANGLE FRAME

FOR STANDARD NO. 2-2-A CATCH BASIN

BUREAU OF LOCATION AND DESIGN  
OHIO DEPARTMENT OF HIGHWAYS

**CATCH BASINS**

STANDARD CONSTRUCTION DRAWING **CB-2-2-A & B**

DATE: 6-1-65

APPROVED *R. R. [Signature]* ENGR. L. & D.