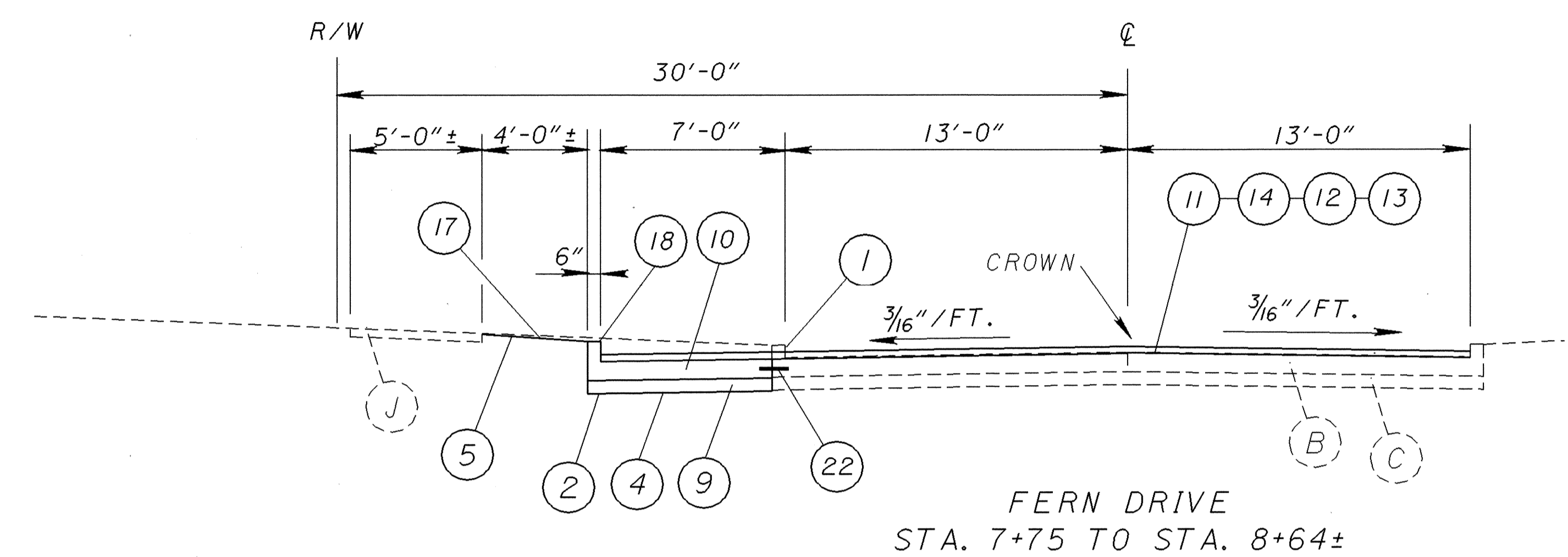
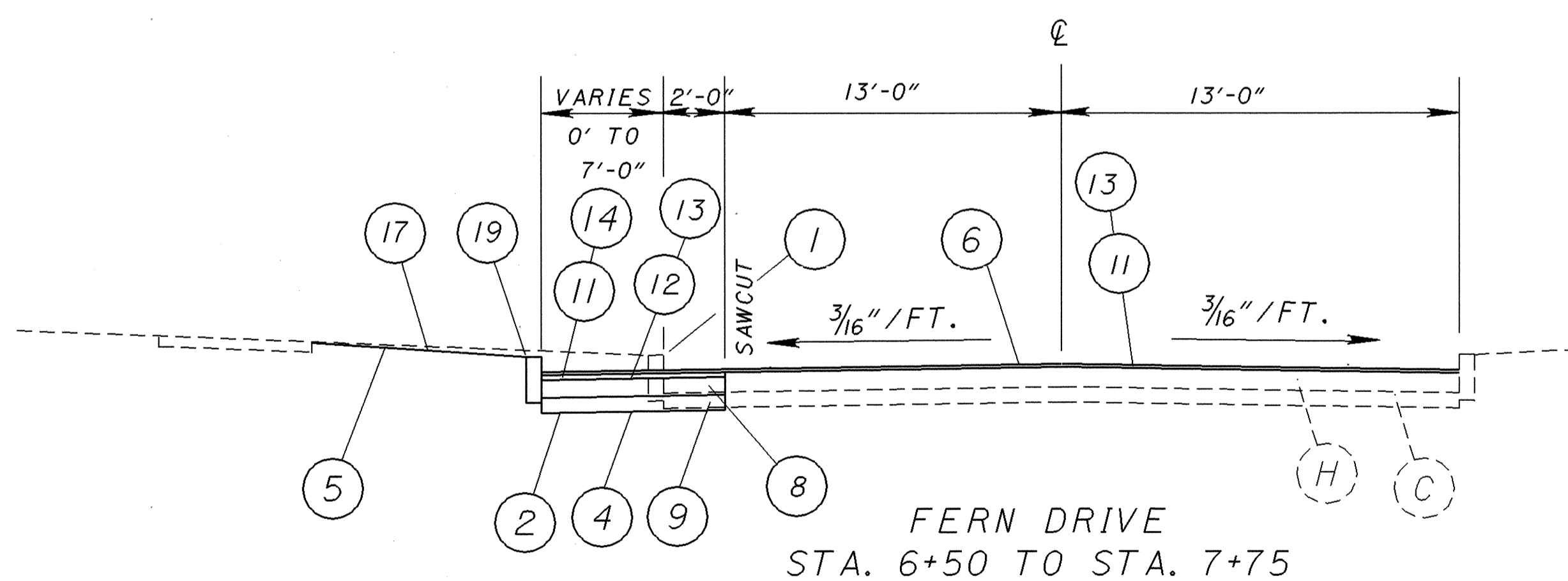


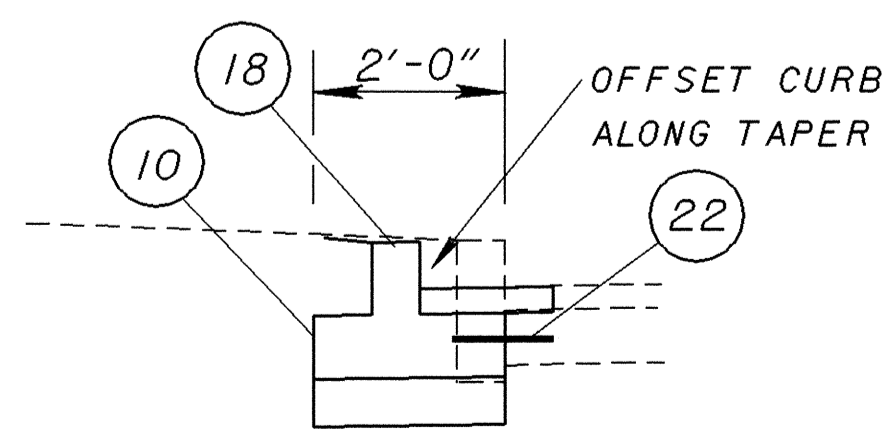
I:\PROJECTS\PI\18391\B&N\PLANS\21365GY.DGN 14-AUG-2001 12:54PM fkonopka



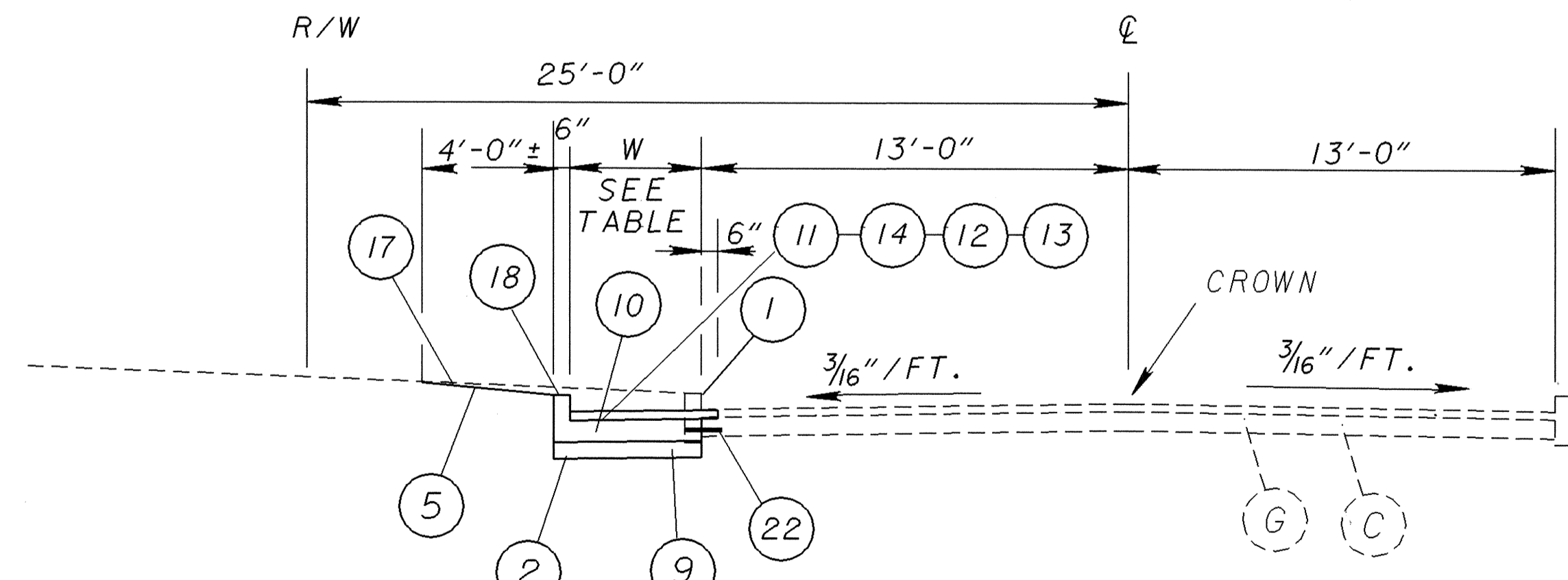
FERN DRIVE  
STA. 7+75 TO STA. 8+64±



FERN DRIVE  
STA. 6+50 TO STA. 7+75



DETAIL TO PROVIDE  
2'-0" MIN. BASE WIDTH



JACKSON STREET  
STA. 6+40 TO STA. 7+62  
STA. 8+57± TO STA. 8+73±  
STA. 11+12± TO STA. 11+20±  
STA. 12+11.93 TO STA. 13+50

W
0'-0"* TO 3.07'
5'-0"
5'-0"
0'-0"* TO 2.57' TO 0'-0"*
* - USE 2'-0" MIN.

LEGEND

ITEM	DESCRIPTION
A	EXISTING 9" CONCRETE PAVEMENT WITH 3" MIN. OVERLAY
B	EXISTING 9" CONCRETE PAVEMENT
C	EXISTING SUBBASE
D	EXISTING PIPE UNDERDRAINS
E	EXISTING AGGREGATE BASE
F	EXISTING BITUMINOUS BASE COURSE
G	EXISTING 7"± CONCRETE BASE WITH 3" MIN. OVERLAY
H	EXISTING BITUMINOUS PAVEMENT
J	EXISTING CONCRETE WALK
1	202 CURB REMOVED
2	203 EXCAVATION
3	203 EMBANKMENT
4	203 SUBGRADE COMPACTION
5	203 LINEAR GRADING
6	254 PAVEMENT PLANING, BITUMINOUS, 1.25"
7	254 PAVEMENT PLANING, BITUMINOUS, 3"±
8	301 7" BITUMINOUS AGGREGATE BASE
9	304 6" AGGREGATE BASE, AS PER PLAN
10	305 9" CONCRETE BASE, AS PER PLAN
11	407 TACK COAT
12	407 TACK COAT FOR INTERMEDIATE COURSE
13	448 1.25" ASPHALT CONCRETE SURFACE COURSE, TYPE 1, PG64-22
14	448 1.75" MIN. ASPHALT CONCRETE INTERMEDIATE COURSE, TYPE 2, PG64-22
15	605 6" SHALLOW PIPE UNDERDRAIN WITH FABRIC WRAP, AS PER PLAN
16	659 SEEDING AND MULCHING
17	660 SODDING UNSTAKED
18	830 CURB, TYPE 2B
19	830 CURB, TYPE 6
20	858 1-1/2" ASPHALT CONCRETE SURFACE COURSE, 12.5 MM, TYPE A (446)
21	STANDARD LONGITUDINAL JOINT
22	TIED LONGITUDINAL JOINT (#)
23	858 3-1/2" ASPHALT CONCRETE INTER. COURSE, 12.5 MM, TYPE A (446)

(#) - TYPE D JOINT AS PER BP-2.1 USING #5 DEFORMED BARS (709.00) AND EPOXY GROUT (705.20). THE COST OF THIS WORK SHALL BE INCLUDED UNDER ITEM 305, CONCRETE BASE, AS PER PLAN

FERN DRIVE & JACKSON STREET TYPICAL SECTIONS  
 LAKE COUNTY  
 LAK-2/44-13.05/4.14  
 50A  
 93