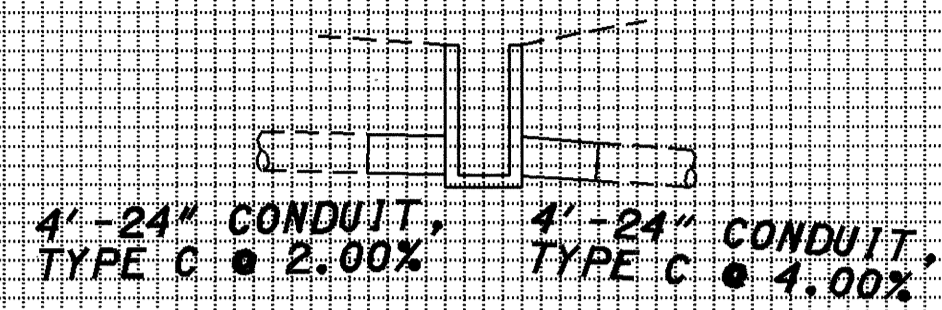


PLOTTED FROM: I:\PROJECTS\18391\dgn\18391qxe.dgn

600

590

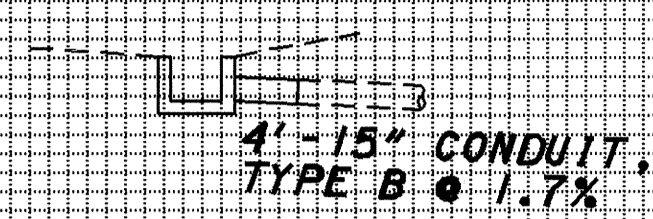


(D-2)

CATCH BASIN, NO. 5  
STA 73+65, SR-44,  
58' LT  
GRATE EL. = 601.30  
E 24" = 594.54  
E 6" = 595.87

600

590

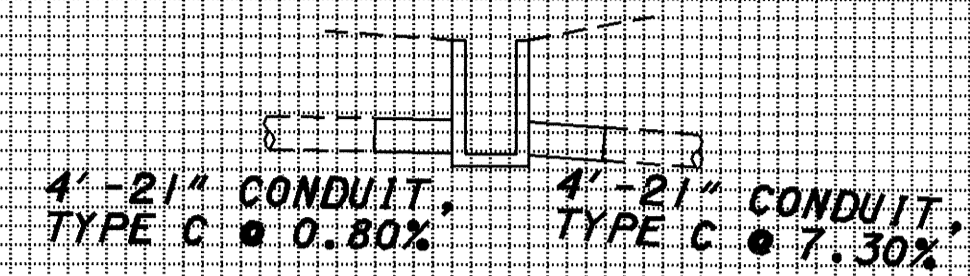


(D-3)

CATCH BASIN, NO. 5  
STA 75+50, SR-44,  
58' RT  
GRATE EL. = 599.07  
E 15" = 596.77  
E 6" = 597.35

600

590

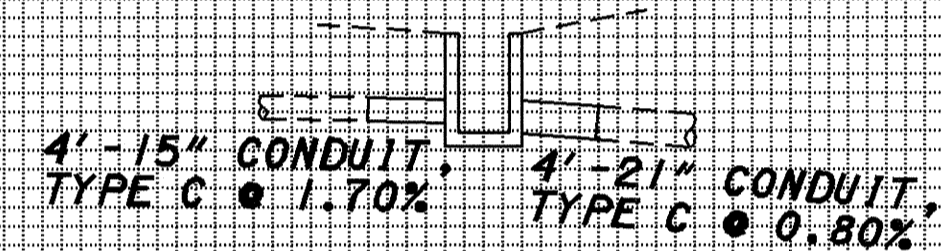


(D-4)

CATCH BASIN, NO. 5  
STA 77+00, SR-44,  
62' LT  
GRATE EL. = 597.80  
E 21" = 591.88  
E 6" = 592.96

600

590

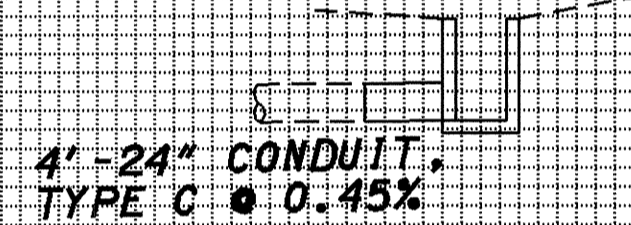


(D-5)

CATCH BASIN, NO. 5  
STA 77+50, SR-44,  
58' RT  
GRATE EL. = 598.14  
E 21" = 592.90  
E 15" = 593.40  
E 6" = 593.98

600

590

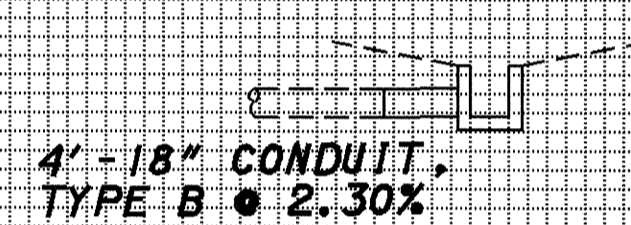


(D-6)

CATCH BASIN, NO. 5  
STA 13+50, RAMP D,  
19' RT  
GRATE EL. = 598.84  
E 24" = 593.46  
E 6" = 594.79

600

590

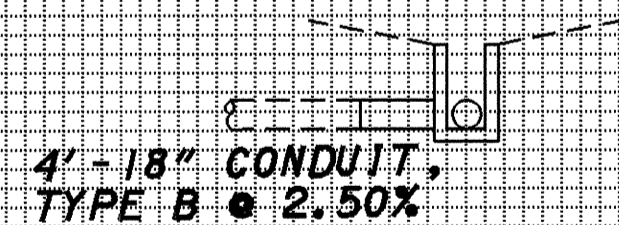


(D-7)

CATCH BASIN, NO. 2-2A  
STA 98+88, SR-44,  
72' RT  
GRATE EL. = 596.50  
WINDOW EL = 596.00  
E 18" = 593.80  
E 6" = 594.80

600

590



(D-8)

CATCH BASIN, NO. 2-2A  
STA 99+60, SR-44,  
60' RT  
GRATE EL. = 596.50  
WINDOW EL = 596.00  
E 18" = 592.10

DRAWN	EMK
CALCULATED	EMK
CHECKED	LDH
REVISED	

STORM SEWER PROFILE

LAKE COUNTY  
LAK-2/44-13.05/4.14