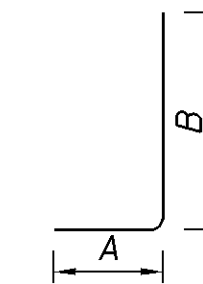
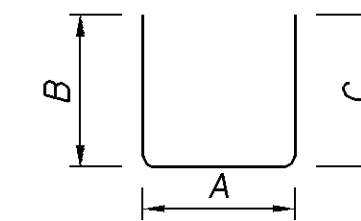


REINFORCEMENT SCHEDULE

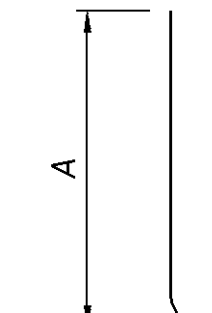
MARK	NUMBER	LENGTH	WEIGHT (LBS)	TYPE	DIMENSIONS						
					A	B	C	D	E	R	INC.
RAILING											
SE501	282	4' - 5"	1299.0	19A	3' - 3"	7"					
SE502	282	1' - 2"	343.1	STR.							
SE503	21	30' - 0"	657.1	STR.							
SE504	8	3' - 10"	32.0	19	3' - 3"						
SE505	8	4' - 1"	34.1	1	1' - 0"	3' - 2"					
SE506	6	3' - 4"	20.8	34	1' - 4 1/2"	1' - 1"	1' - 1"	0' - 3 1/4"			
SE507	6	2' - 5 1/2"	15.4	1	1' - 0"	1' - 7"					
SE508	3	29' - 0"	90.7	STR.							
SE601	7	30' - 0"	315.4	STR.							
SE602	1	28' - 4"	42.6	STR.							
SUB TOTAL			2850.2								
TRANSITION BARRIER											
AE501	2	3' - 1"			2' - 5"						
	S.O.	T0	65.7	19	T0						0' - 1 1/4"
	9	3' - 11"			3' 3"						
AE502	18	3' - 1"	57.9	1	1' - 0"	2' - 2"					
AE503	18	3' - 11"	73.5	34	1' - 11"	1' - 1"	1' - 1"	0' - 3 1/4"			
AE504	2	3' - 3"			1' - 0"	2' - 4"					
	S.O.	T0	68.8	1	T0	T0					0' - 1 1/4"
	9	4' - 1"			1' - 0"	3' - 2"					
AE505	6	7' - 3"	45.4	18	0' - 10"	3' - 4"	3' - 4"				
AE506	4	6' - 10"	28.5	18	0' - 5 1/4"	3' - 4"	3' - 4"				
AE507	16	8' - 4"	139.0	STR.							
AE508	6	6' - 9"	42.2	35	2' - 6"	1' - 4"	2' - 11"				
AE509	10	6' - 9"	70.4	STR.							
SUB TOTAL			591.4								
APPROACH SLAB											
A501	12	12' - 5"	155.4	STR.							
A502	54	6' - 6"	366.1	STR.							
A1001	20	13' - 10"	1190.5	19	12' - 5"						
SUB TOTAL			1712.0								
TOTAL			5153.7								



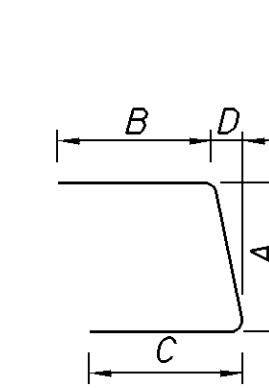
TYPE 1



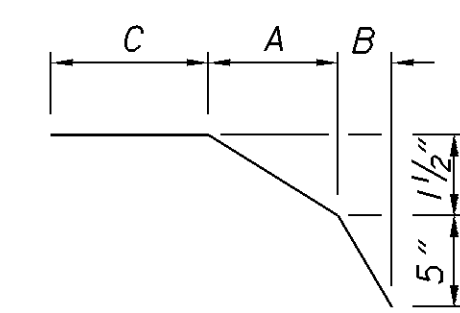
TYPE 18



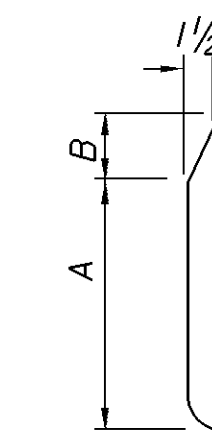
TYPE 19



TYPE 34



TYPE 35



TYPE 19A

NOTES:

THE BAR SIZE NUMBER IS SPECIFIED ON THE PLANS IN THE BAR MARK COLUMN. THE FIRST DIGIT WHERE THREE ARE USED, AND THE FIRST TWO DIGITS WHERE FOUR ARE USED INDICATE THE BAR SIZE NUMBER. FOR EXAMPLE, P601 IS A #6 BAR. BAR DIMENSIONS SHOWN ARE OUT TO OUT UNLESS OTHERWISE INDICATED.

STD. WRITTEN IN PLACE OF A DIMENSION INDICATES A STANDARD BEND AT THE END OF THE BAR.

STR. IN THE BAR TYPE COLUMN INDICATES A STRAIGHT BAR.

R INDICATES INSIDE RADIUS, UNLESS OTHERWISE NOTED.

INC INDICATES THE LENGTH INCREMENT FOR SERIES BARS.

ALL REINFORCING STEEL TO BE EPOXY COATED.