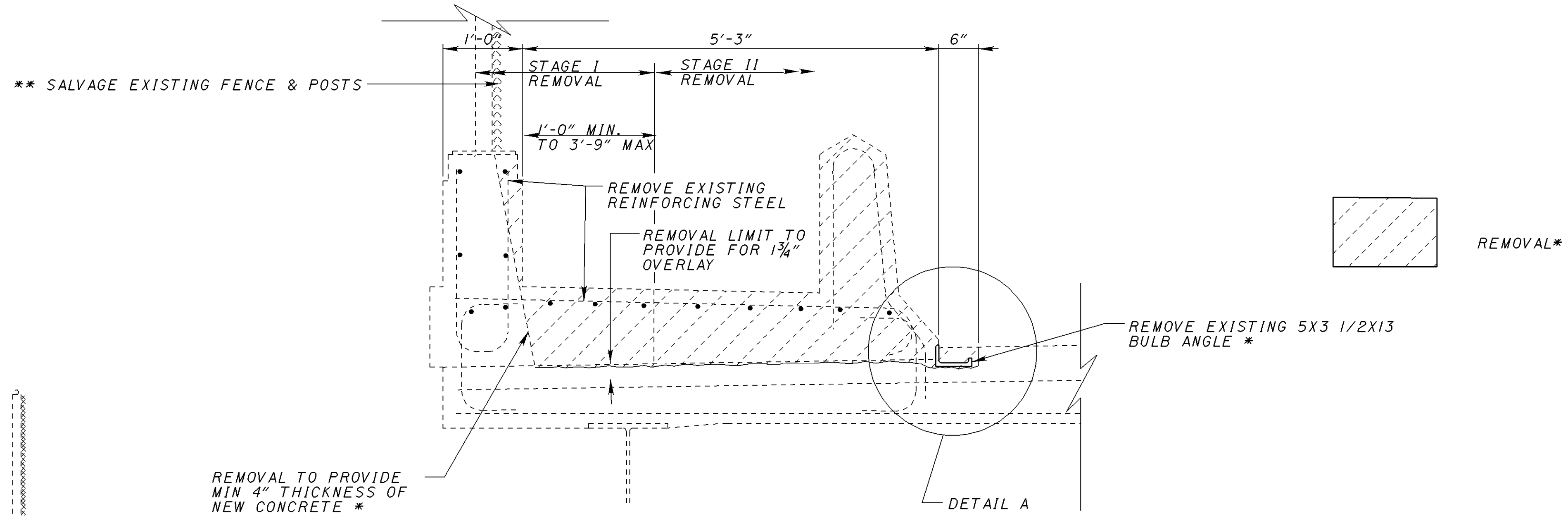
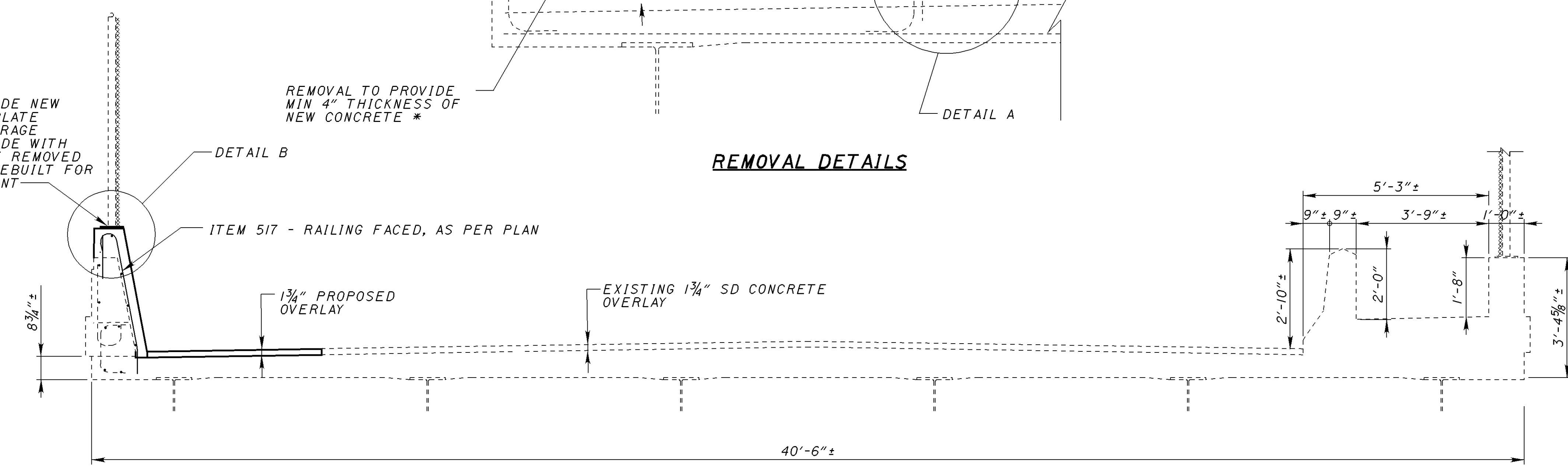


PROJECTS\PI\8391B&N\PLANS\18391SDM.DGN 14 AUG 2001 11:15 PM fkonopka



** PROVIDE NEW BASEPLATE ANCHORAGE (INCLUDE WITH FENCE REMOVED AND REBUILT FOR PAYMENT)



REMOVAL DETAILS

NOTES:

EXACT EXISTING REBAR LOCATIONS NOT KNOWN

ALL REINFORCING STEEL SHALL BE SPACED AS SHOWN. VERTICAL STEEL SHALL MISS SHRINKAGE CONTROL JOINTS BY 3" MIN.

ALL LONGITUDINAL STEEL SHALL BE CONTINUOUS WITH MINIMUM LAP SPLICES 2'-0"

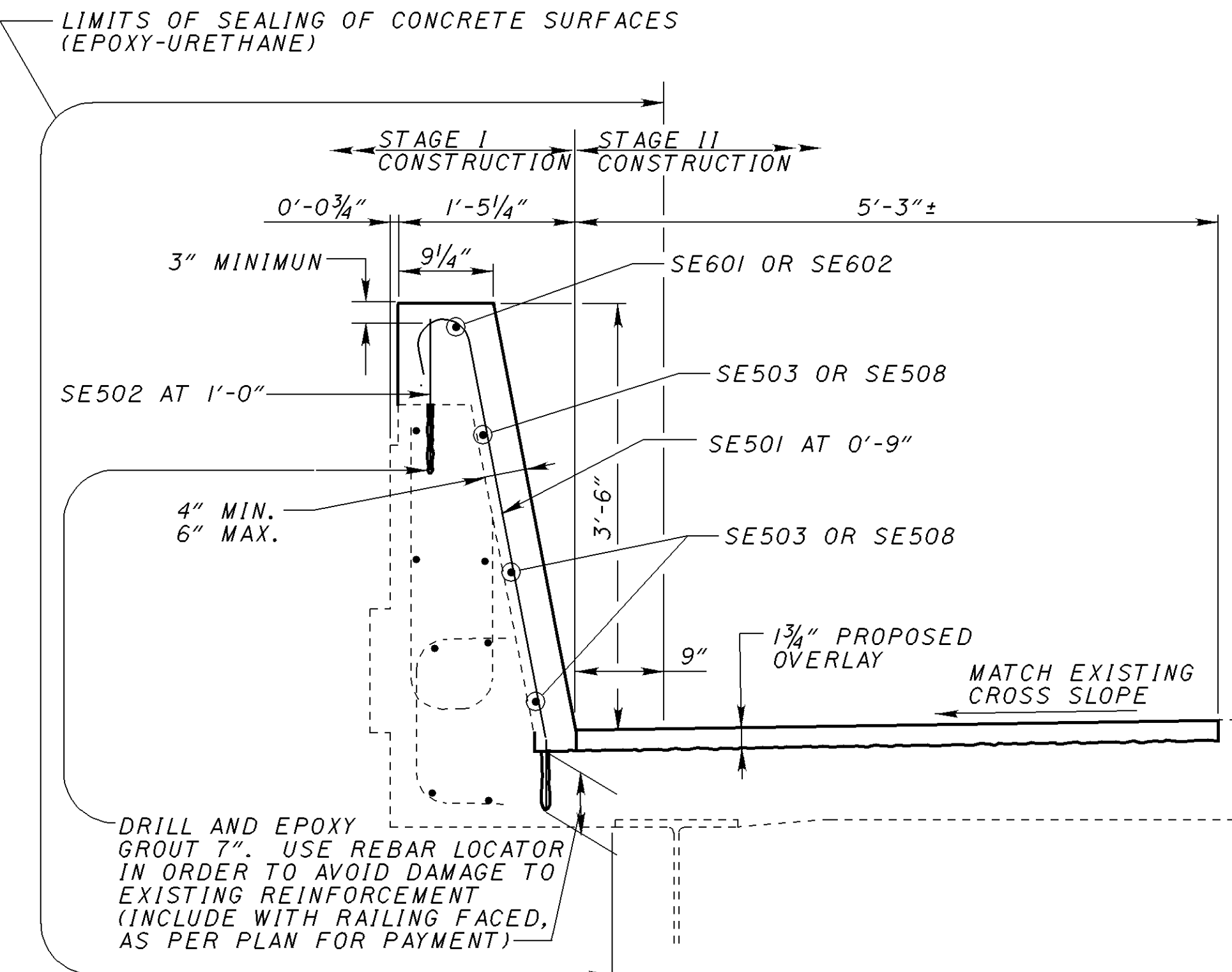
CONCRETE COVER SHALL BE 2" TYPICAL

REINFORCING STEEL = ASTM A615, A616, OR A617, GRADE 60. Fy = 60 KSI. Fs = 24 KSI

FOR ADDITIONAL NOTES AND INFORMATION, SEE SBR-1-98 AND THE STRUCTURE NOTES.

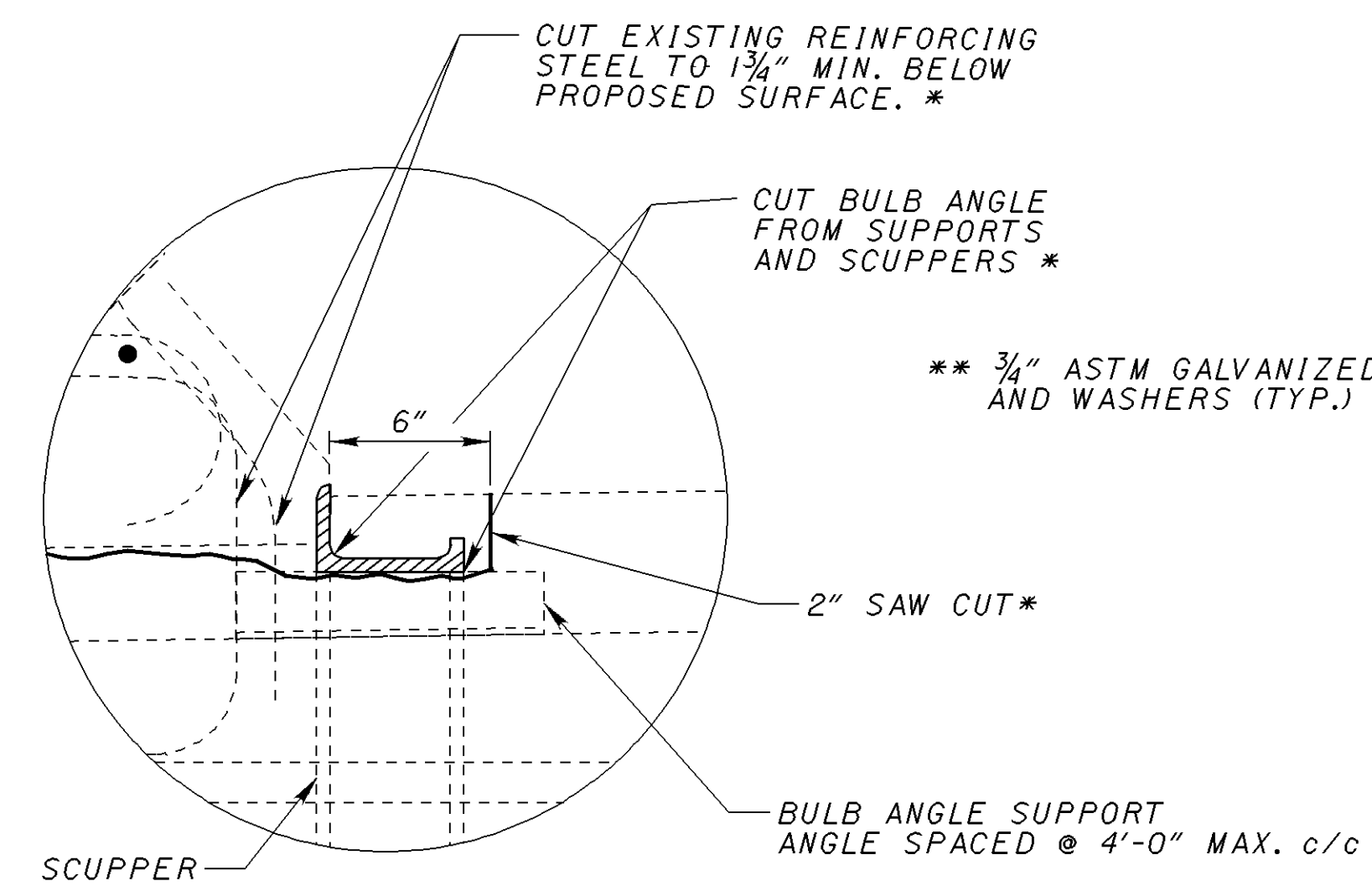
* INCLUDE WITH ITEM 202 - PORTIONS OF STRUCTURE REMOVED, AS PER PLAN

PROPOSED TRANSVERSE SECTION FACING EAST

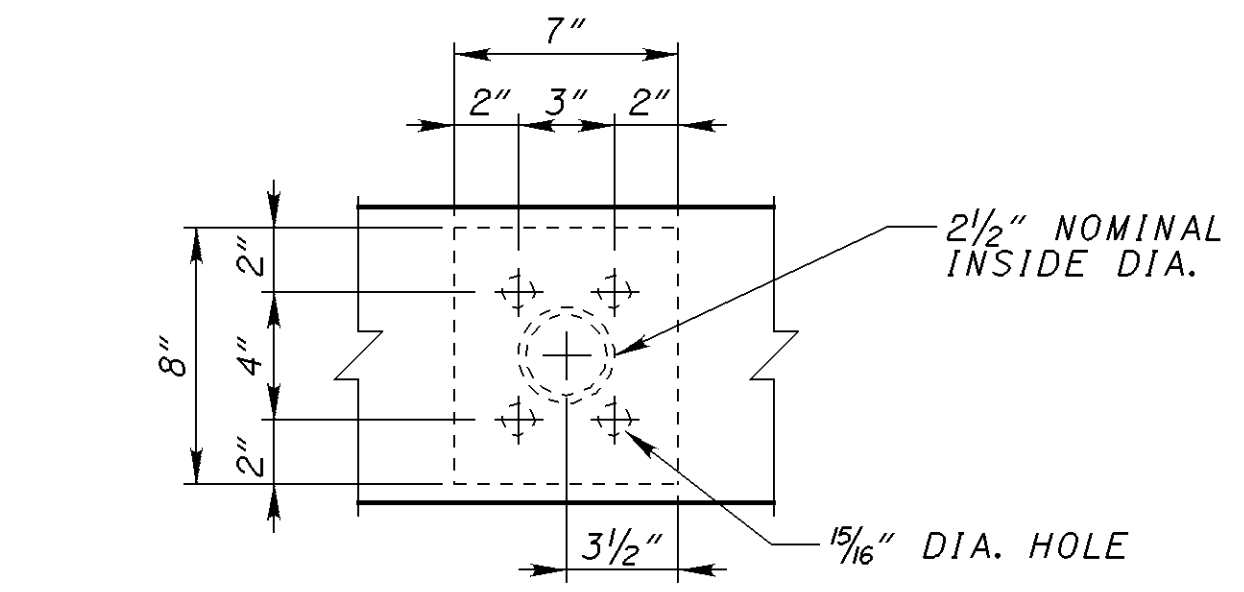


REPAIR DETAIL

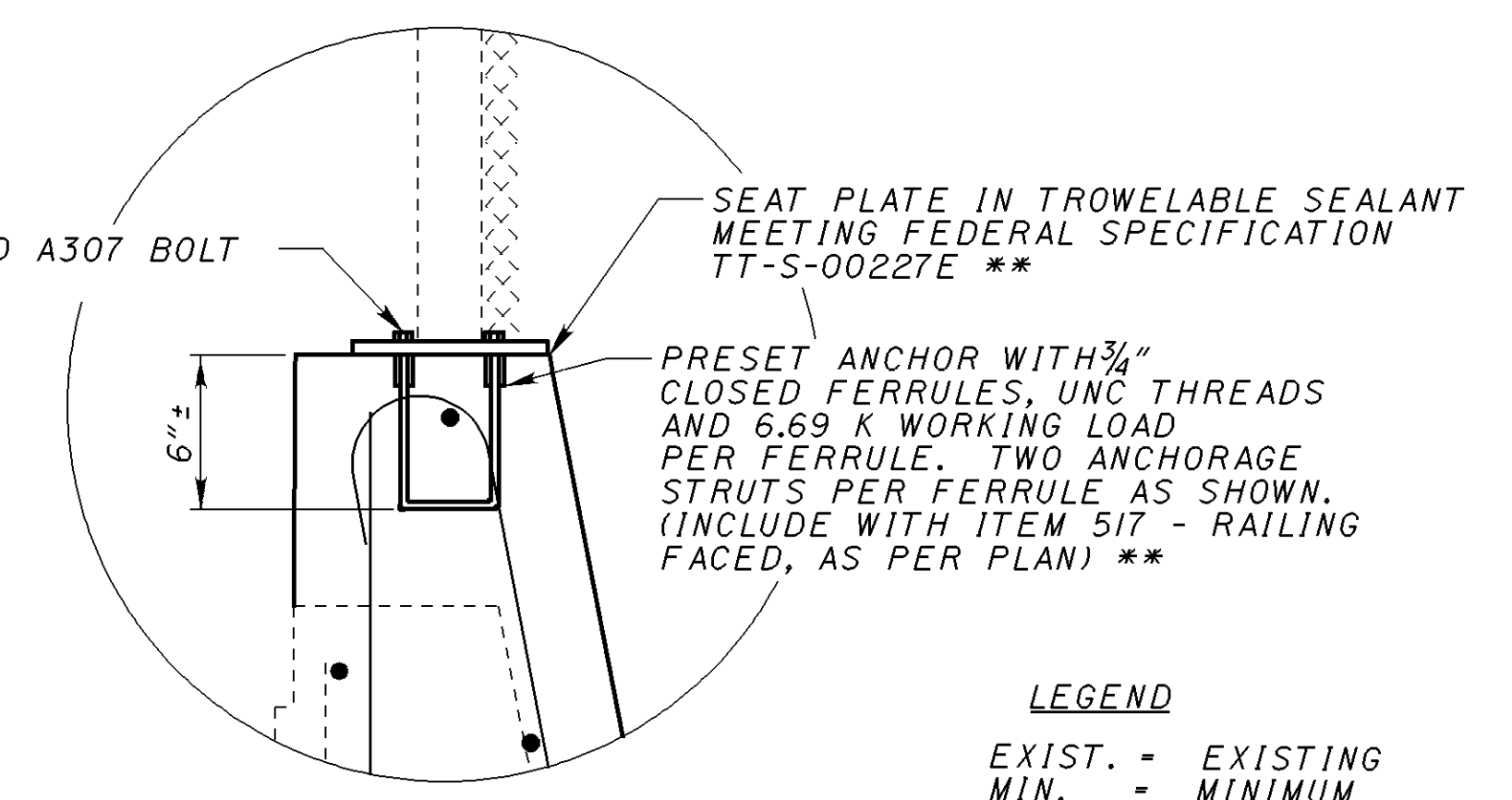
DRILL AND EPOXY GROUT 7". USE REBAR LOCATOR IN ORDER TO AVOID DAMAGE TO EXISTING REINFORCEMENT (INCLUDE WITH RAILING FACED, AS PER PLAN FOR PAYMENT)



DETAIL A



PLAN VIEW EXISTING BASE PLATE



DETAIL B

LEGEND

EXIST. = EXISTING

MIN. = MINIMUM

PL = PLATE

R. = RADIUS

SS = STAINLESS STEEL

TYP. = TYPICAL

c/c = CENTER TO CENTER

DESIGN AGENCY: BURGESS & NIPLE, 100 WEST ERIE STREET, FAIRBURNVILLE, OHIO 44077

DATE: 2-28-01

REVIEWED: DWL

STRUCTURE FILE NUMBER: 4302702

DESIGNED: SCT

CHECKED: ENF

STRUCTURE DETAILS

BRIDGE NO. LAK-44-0510

JACKSON STREET OVER STATE ROUTE 44

LAKE COUNTY

LAK-2/44-13.05/4.14

5 / 8

85E

93