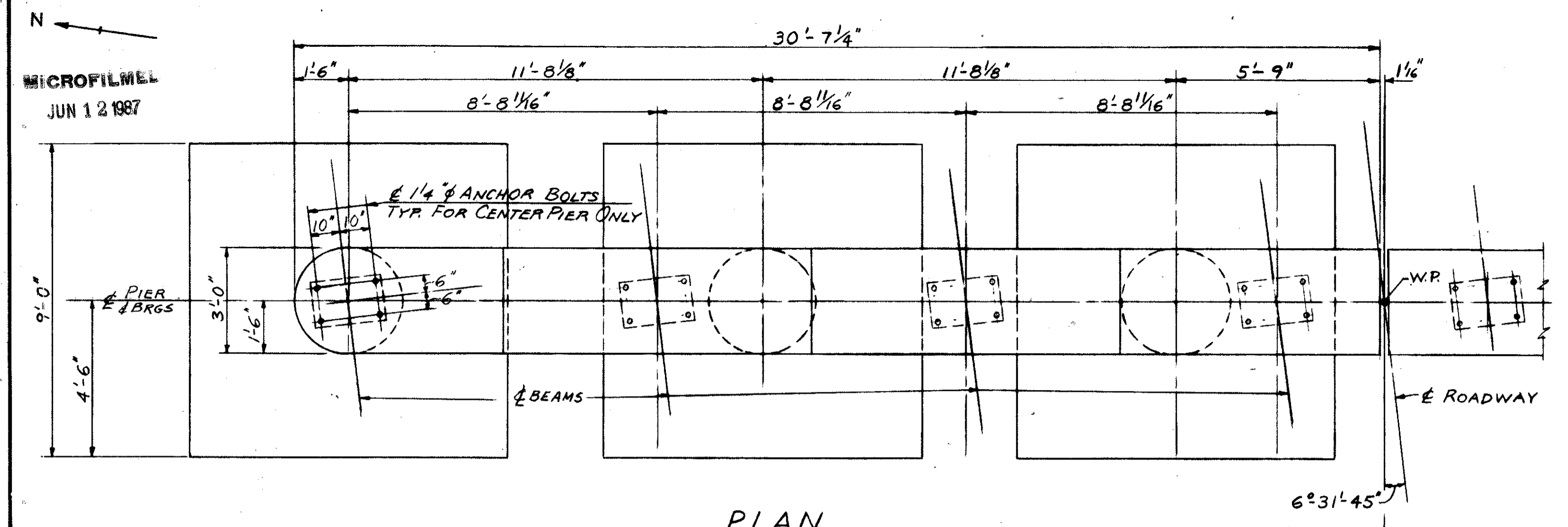
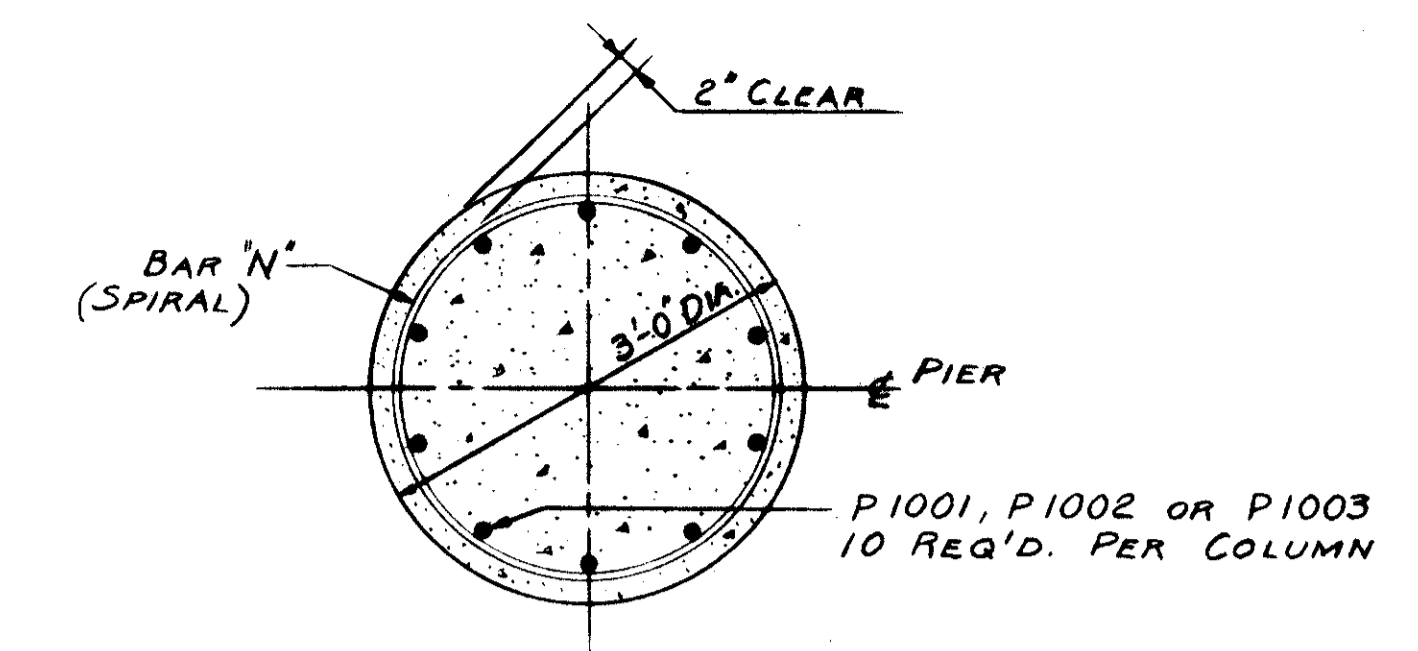


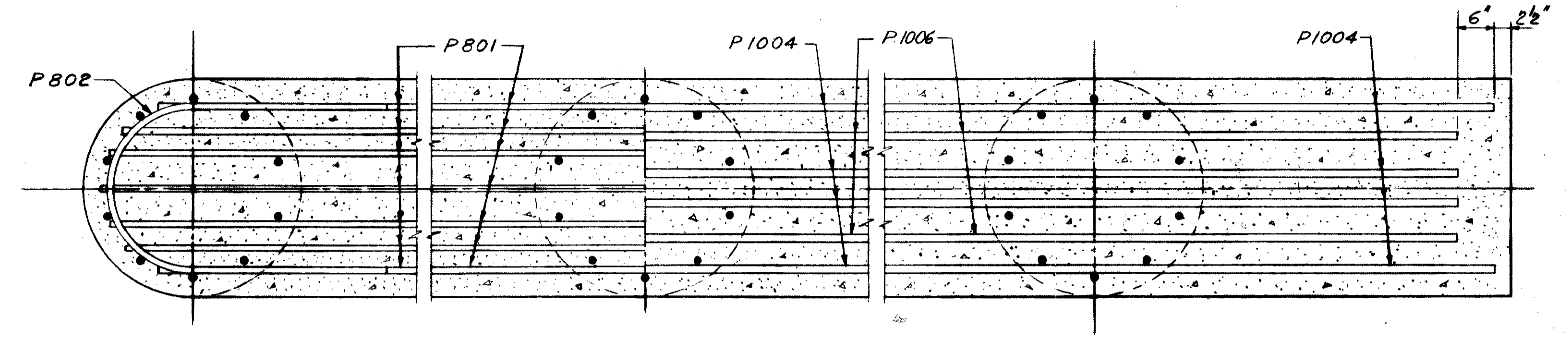
LAKE COUNTY
LAK-44-1.70



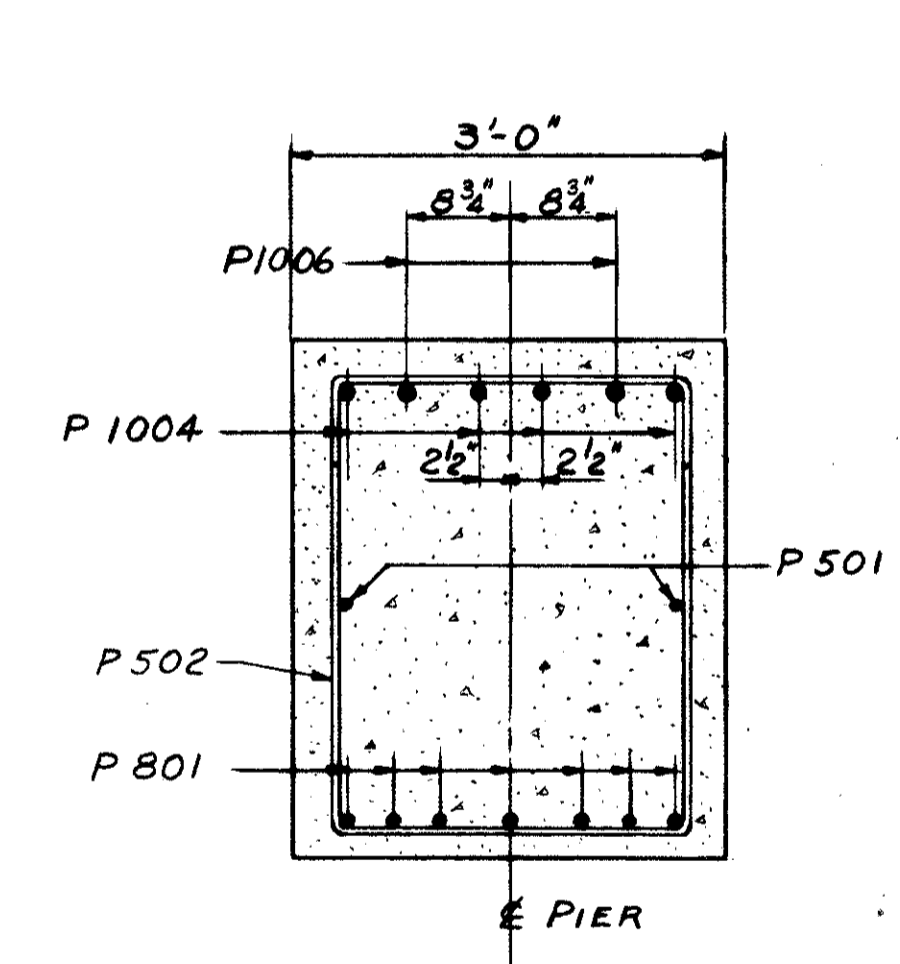
PLAN



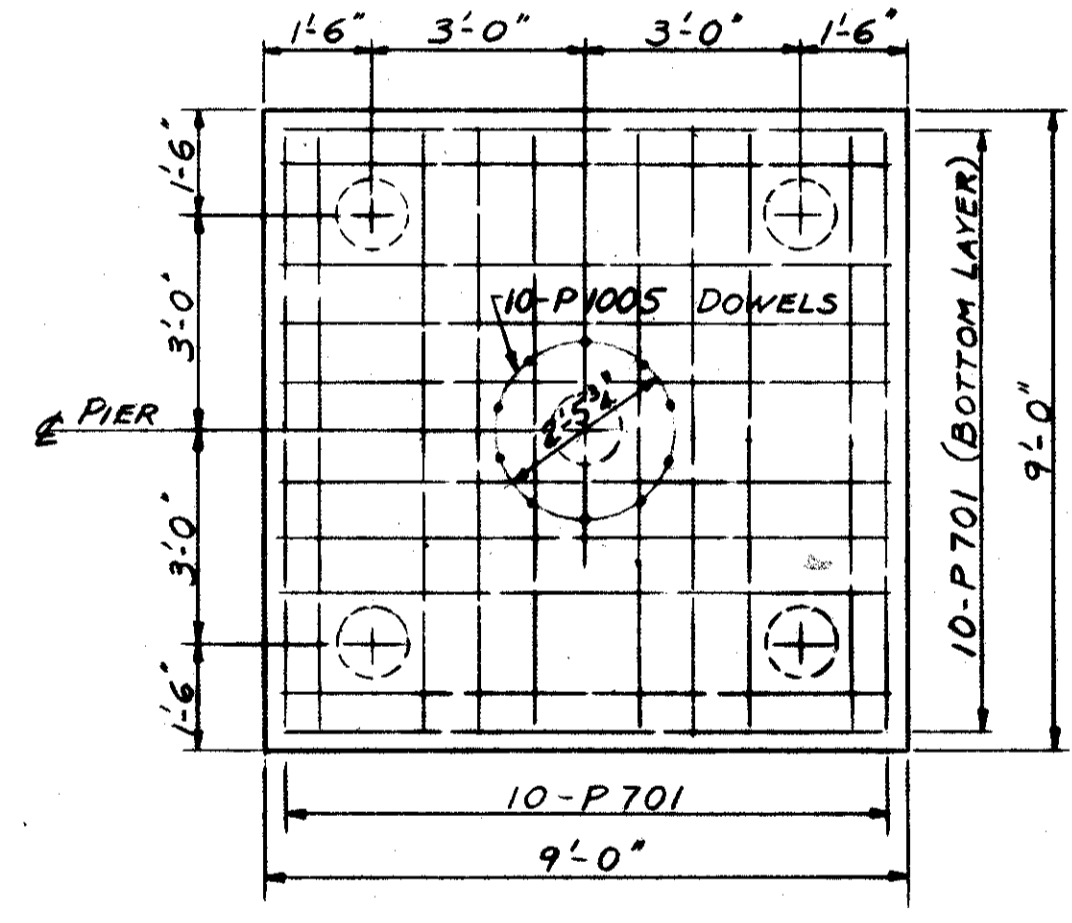
SECTION A-A



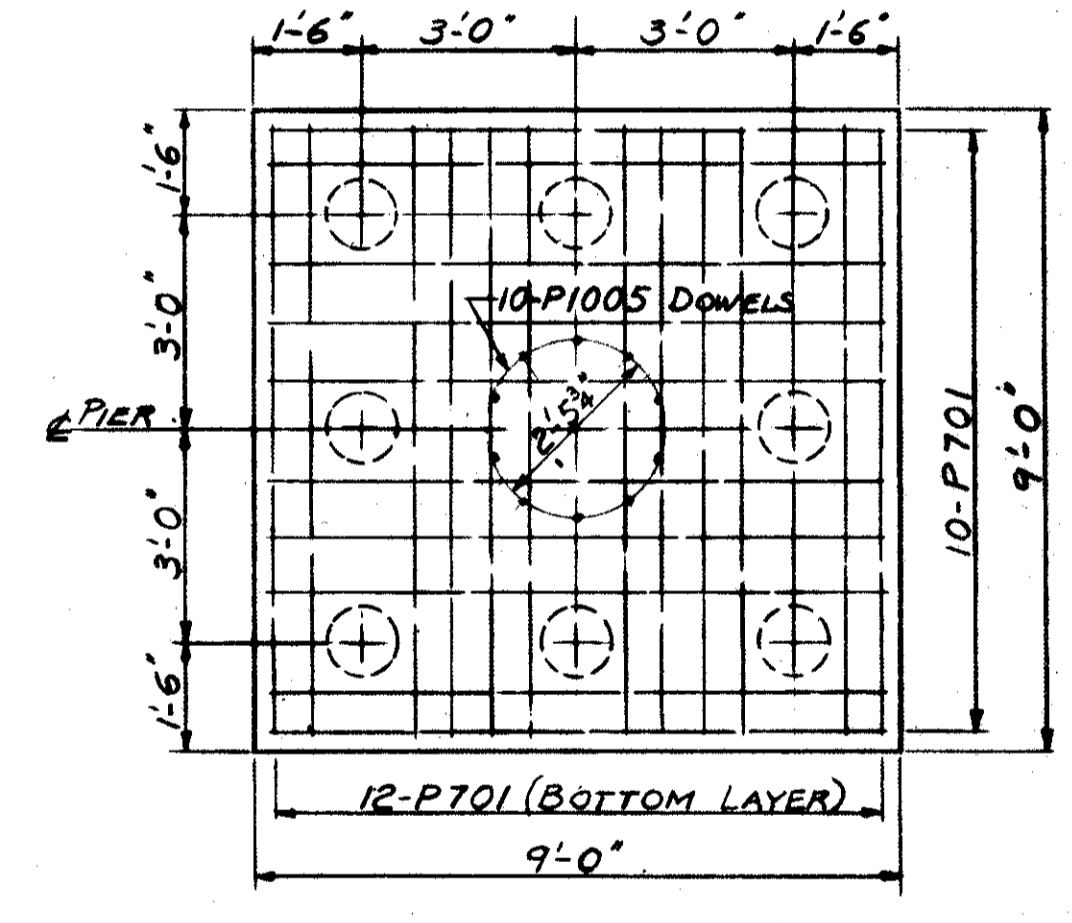
SECTION B-B



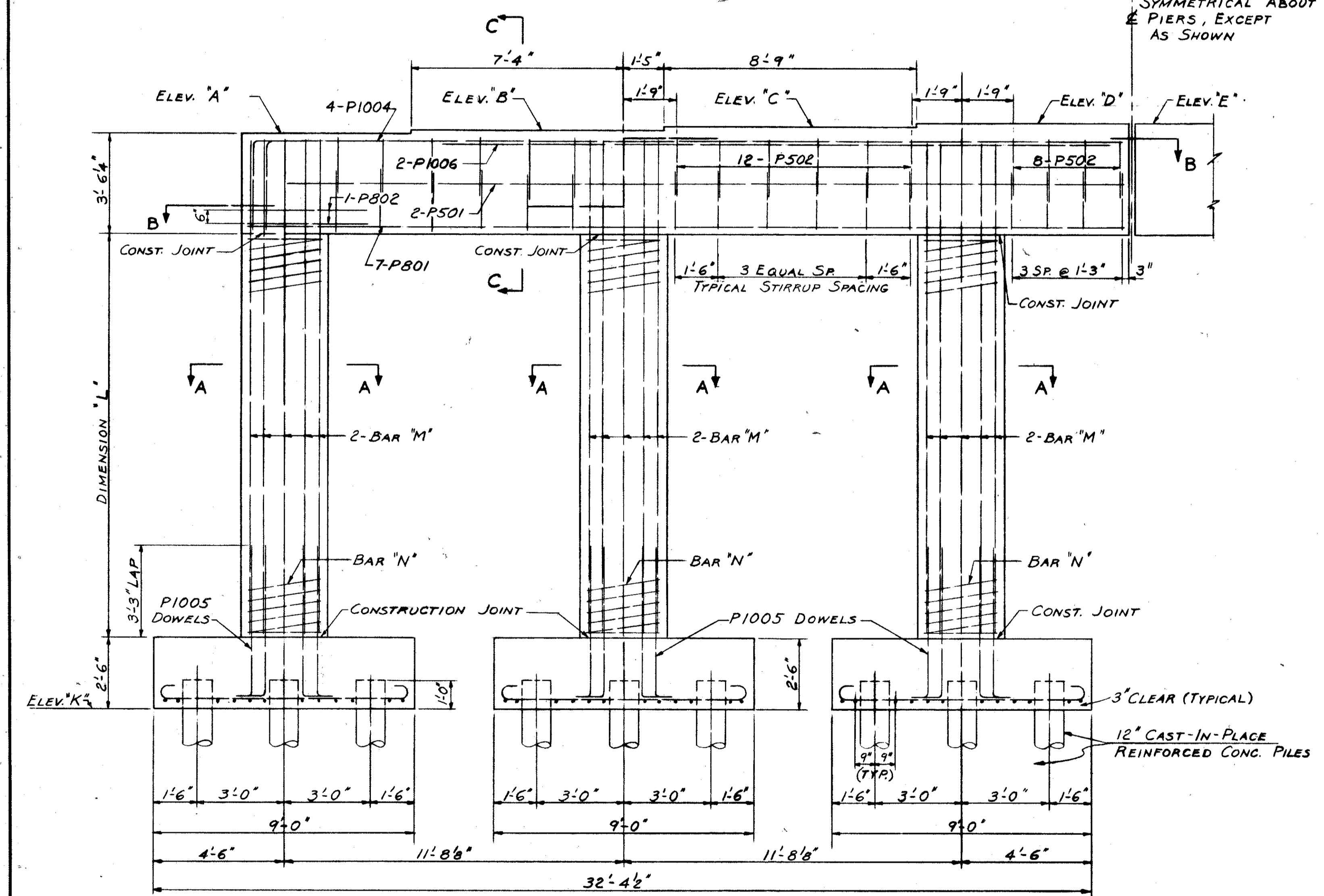
SECTION C-C



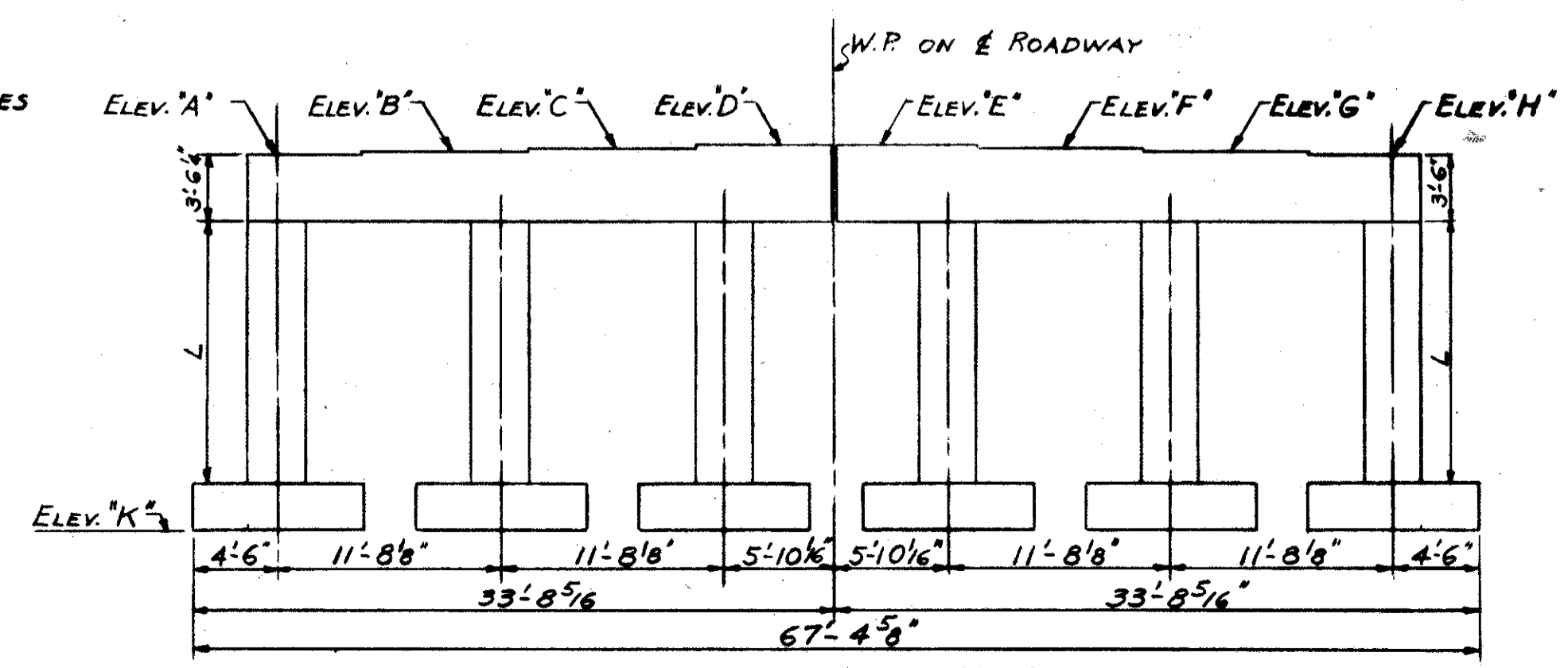
TYPICAL FOOTING PLAN FOR EAST & WEST PIERS



TYPICAL FOOTING PLAN FOR CENTER PIERS



HALF ELEVATION EAST-WEST-CENTER PIERS



FULL ELEVATION EAST-WEST-CENTER PIERS

	ELEVATION									DIMENSION	BAR	
	'A'	'B'	'C'	'D'	'E'	'F'	'G'	'H'	'K'		'M'	'N'
WEST PIER	752.16	752.27	752.42	752.56	752.56	752.42	752.27	752.14	730.64	15.50 (15'-6")	P1001	SP401
CENTER PIER	752.28	752.39	752.54	752.68	752.68	752.54	752.39	752.26	729.75	16.50 (16'-6")	P1002	SP402
EAST PIER	752.60	752.71	752.86	753.00	753.00	752.86	752.71	752.58	731.54	15.04 (15'-0 1/2")	P1003	SP403

FOR NOTES SEE DWG. 201

TRYGVE HOFF & ASSOCIATES
ENGINEERS
1922 EAST 107TH STREET CLEVELAND, OHIO

PIER DETAILS
BRIDGE NO. LAK-44-0411
S.R. 44 UNDER S.R. 84
LAKE COUNTY S.R. 44
STA. 217+54.03

SCALE: CLS CLS GLP A.J. 4-29-58