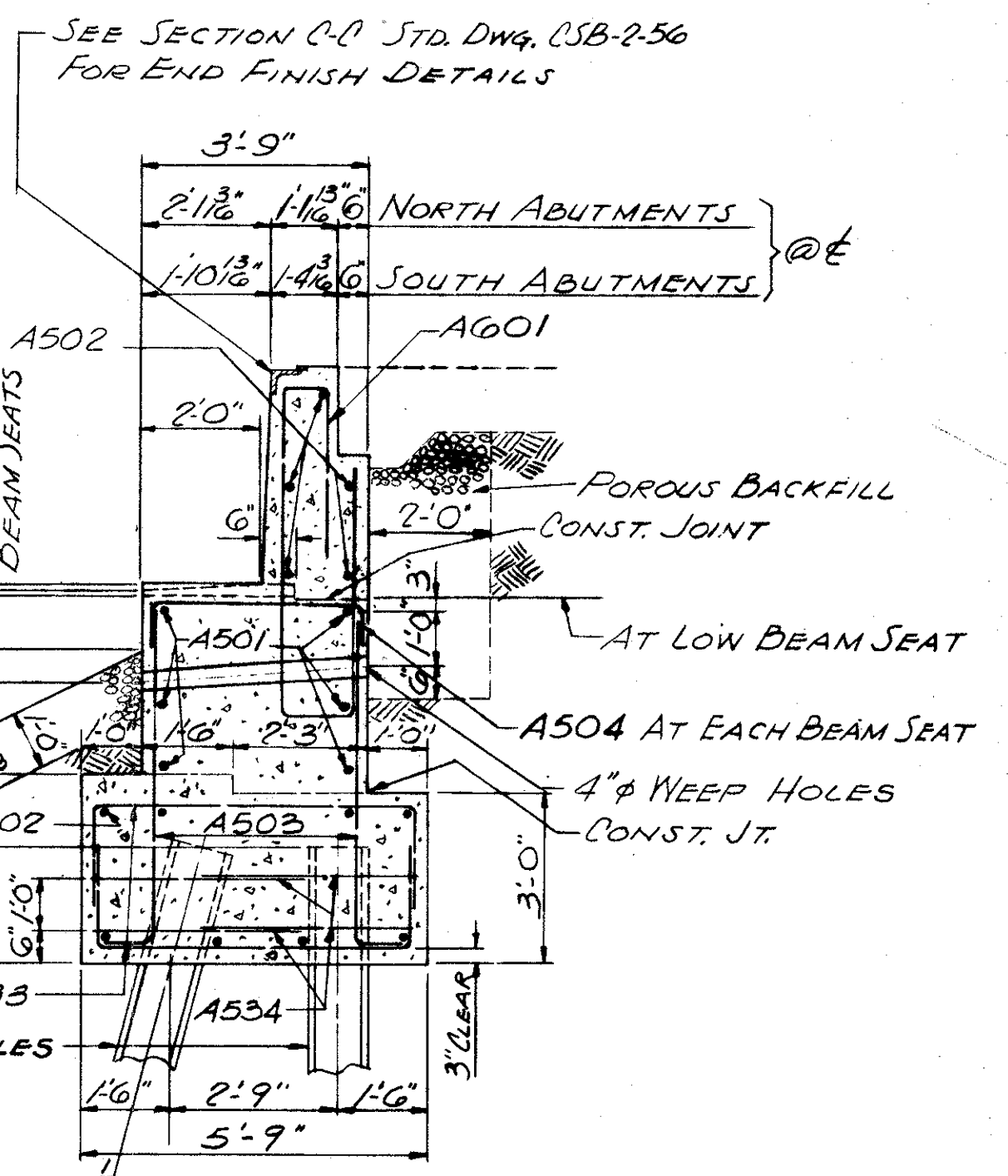


ORIENTATION PLAN OF NE & SW ABUTMENTS  
SIMILAR TO SE & NW ABUTMENTS



**NOTES**

SEE DWG. 200 FOR ADDITIONAL NOTES  
SEE DWG. 209 FOR ELEVATIONS A-A & B-B,  
AND SECTIONS D-D, E-E, F-F & G-G  
SPECIAL CARE SHALL BE TAKEN IN PLACING  
REINFORCING STEEL IN THE BEAM SEATS  
SO THAT IT WILL NOT INTERFERE WITH BEARING  
ANCHOR BARS.

ELEVATIONS	B	C	D	E	F	G	H	J	K	L	M	N	P	R
SOUTHEAST ABUTMENT	697.67	704.00	704.26	704.52	704.56	704.57	704.58	703.01	707.46	703.04	710.18	709.77	710.80	710.39
SOUTHWEST ABUTMENT	696.03	703.14	703.13	703.12	702.89	702.62	702.36	706.57	706.59	705.82	708.54	708.13	709.35	708.94
NORTHEAST ABUTMENT	694.21	700.54	700.80	701.06	701.10	701.11	701.12	704.44	703.89	704.47	706.45	706.86	705.89	706.24
NORTHWEST ABUTMENT	692.57	699.68	699.67	699.66	699.42	699.16	698.90	703.01	703.03	702.26	705.01	705.42	704.20	704.61

**PROCEDURE:** THE EMBANKMENT SHALL BE PLACED AND COMPACTED UP TO THE FINISHED SPILL-THRU SLOPE AND TO THE LEVEL OF THE SUBGRADE AFTER WHICH EXCAVATION SHALL BE MADE FOR THE ABUTMENTS AND THE PILES DRIVEN.

TRYGVE HOFF & ASSOCIATES  
ENGINEERS  
1922 EAST 107TH STREET CLEVELAND, OHIO

**ABUTMENT DETAILS**  
BRIDGE NO. LAK-44-0353, L&R  
S.R. 44 OVER KELLOGG CREEK  
LAKE COUNTY S.R. 44  
STA. 187+50

SCALE	DATE
DESIGNED	DRAWN
TRACED	CHECKED
REVIEWED	DATE
REVISED	

C.A.T. C.A.T. G.L.P. C.A.T. 8-15-58