

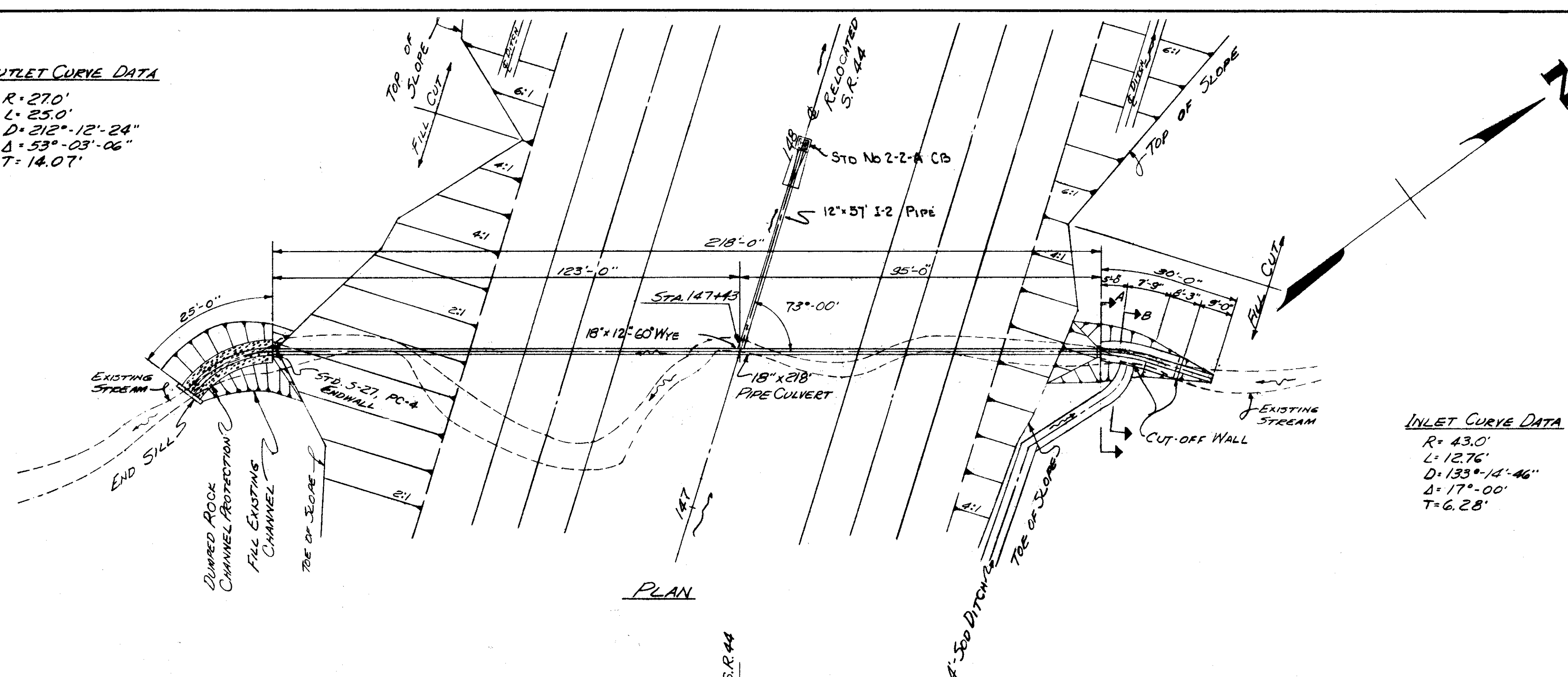
FED. RD. DIVISION	STATE	PROJECT
2	OHIO	

185
228

LAKE COUNTY
LAK-44-1.70

OUTLET CURVE DATA

R=270'
L=25.0'
D=212°-12'-24"
Δ=53°-03'-06"
T=14.07'



INLET CURVE DATA

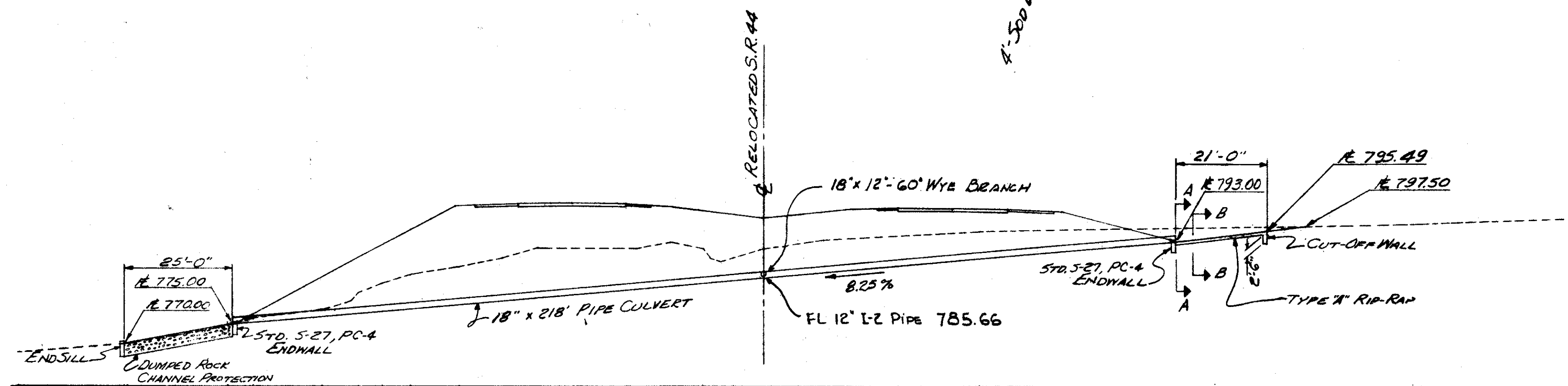
R=43.0'
L=12.76'
D=133°-14'-46"
Δ=17°-00"
T=6.28'

ESTIMATED QUANTITIES

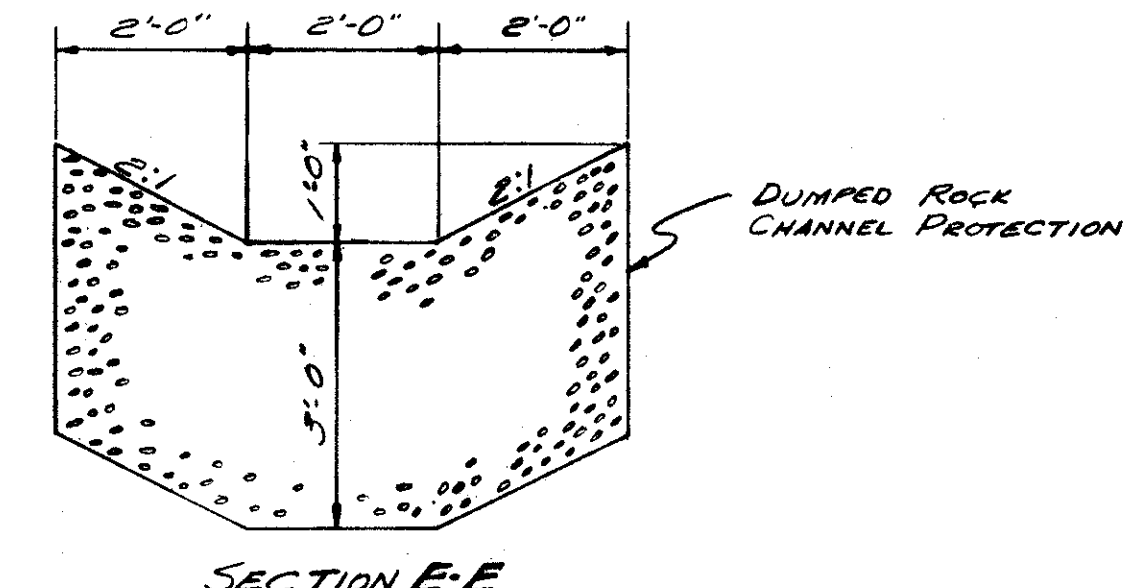
ITEM E-2	EXCAVATION FOR STRUCTURES	145 CU. YDS.
ITEM E-3	CHANNEL EXCAVATION	66 CU. YDS.
ITEM I-10	RIP-RAP TYPE 'A'	13.8 SQ. YDS.
ITEM I-10	DUMPED ROCK CHANNEL PROTECTION	16.67 CU. YDS.
ITEM S-1	CONCRETE FOR STRUCTURES-CLASS 'E'	1.79 CU. YDS.
ITEM S-27	18" PIPE FOR ROADWAY CULVERT SEC. M-6.G.(C)	218 LIN. FT.
ITEM L-10	SODDING	7.1 SQ. YDS.
ITEM I-5	PIPE SPECIAL 18" x 12" WYE BRANCH 60° SEC. M-6.G.(C)	1 EACH

DRAINAGE AREA = 5.1 AC.
Q₂₅ = 16 C.F.S.

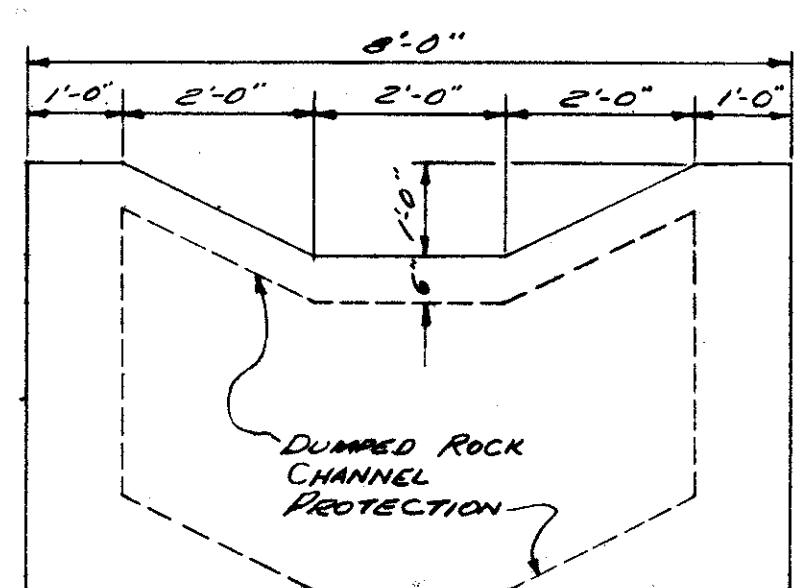
PLAN



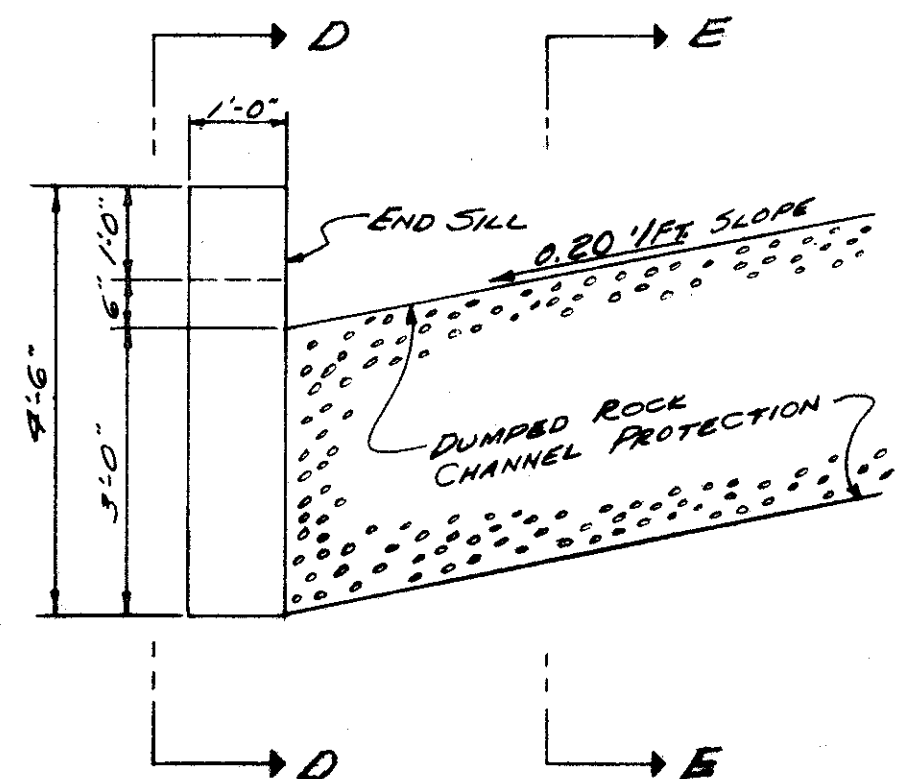
ELEVATION



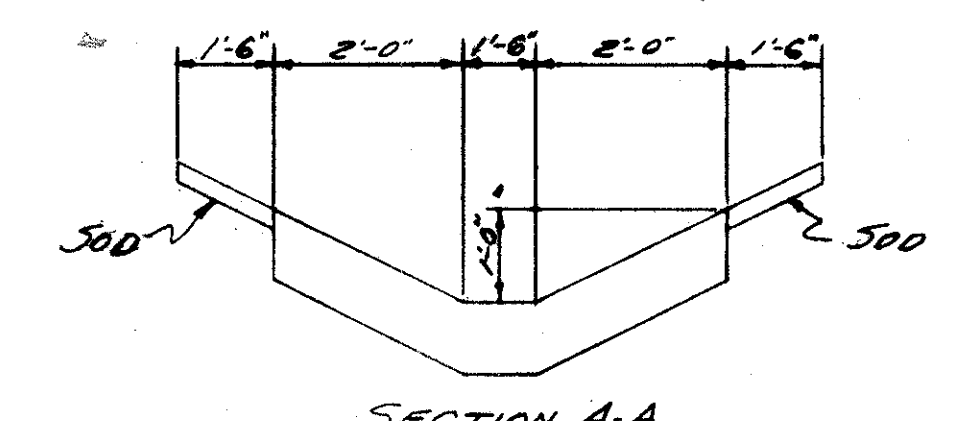
SECTION E-E



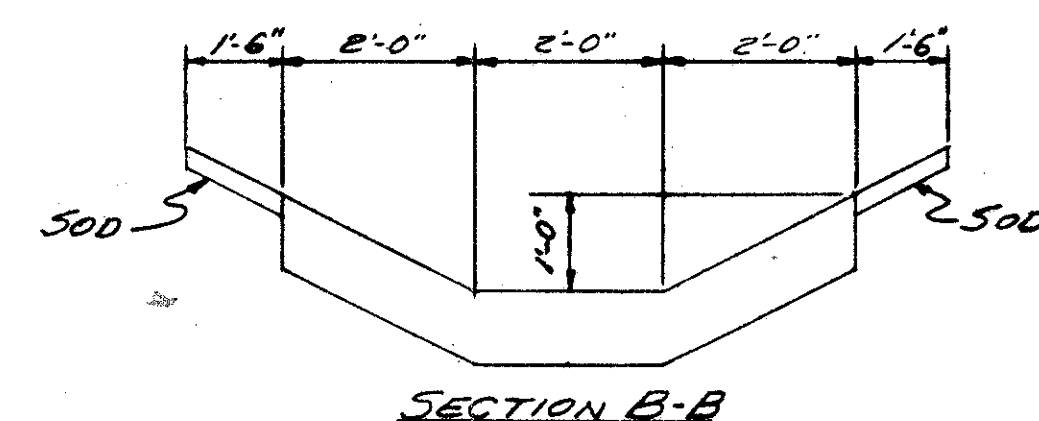
SECTION D-D



DETAIL OUTLET PROTECTION



SECTION A-A



SECTION B-B

DETAIL INLET PROTECTION

TRYGVE HOFF & ASSOCIATES
ENGINEERS
1922 EAST 107TH STREET CLEVELAND, OHIO

PIPE CULVERT

RELOCATED S.R. 44
STA. 147+43

SCALE 1"=20' DATE

DESIGNED	DRAWN	TRACED	CHECKED	REVIEWED	DATE	REVISED
JPC				JWP	T.L.L.	10/11/58