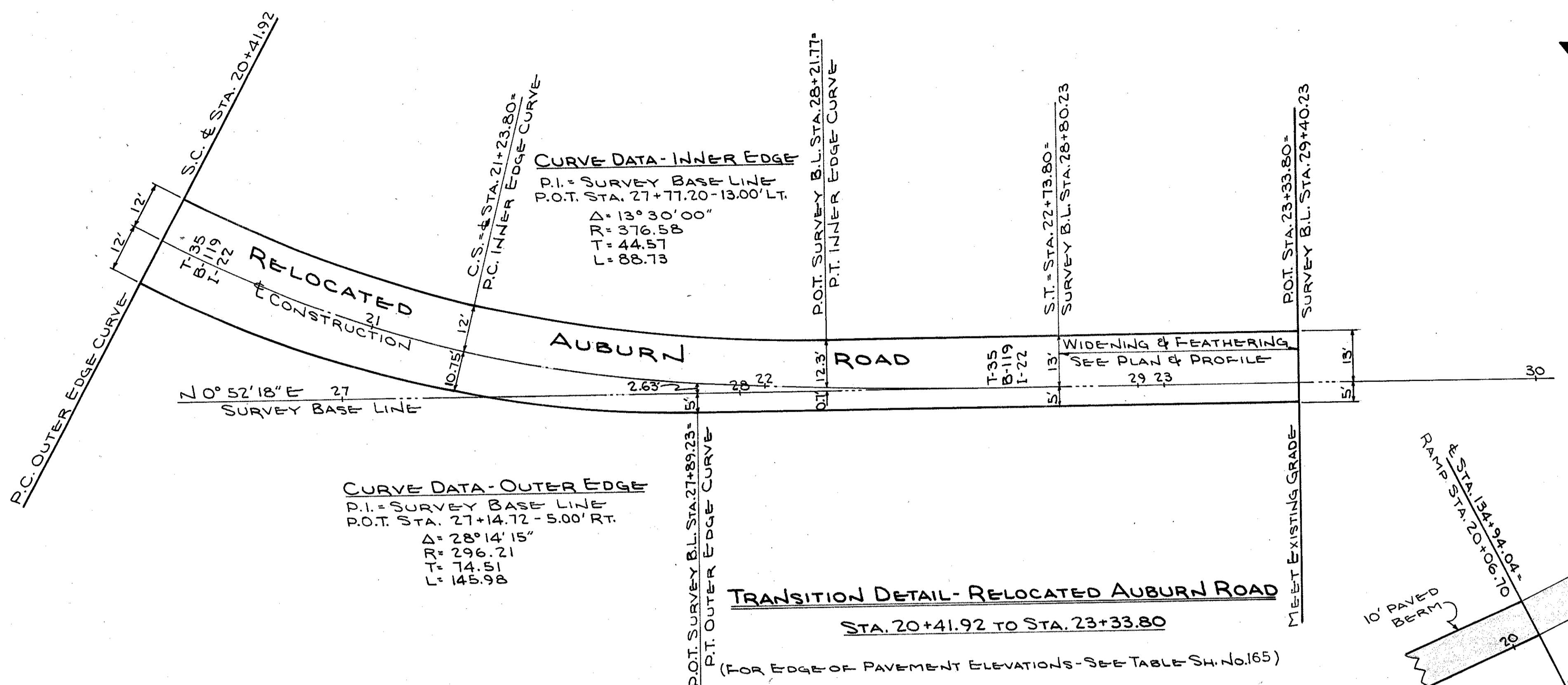
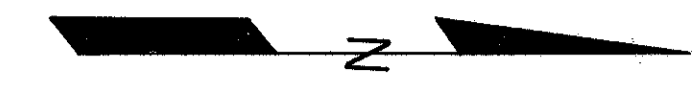


7-H

FED. RD. DIVISION	STATE	PROJECT	
2	OHIO		

175
228

LAKE COUNTY
LAK-44-1.70



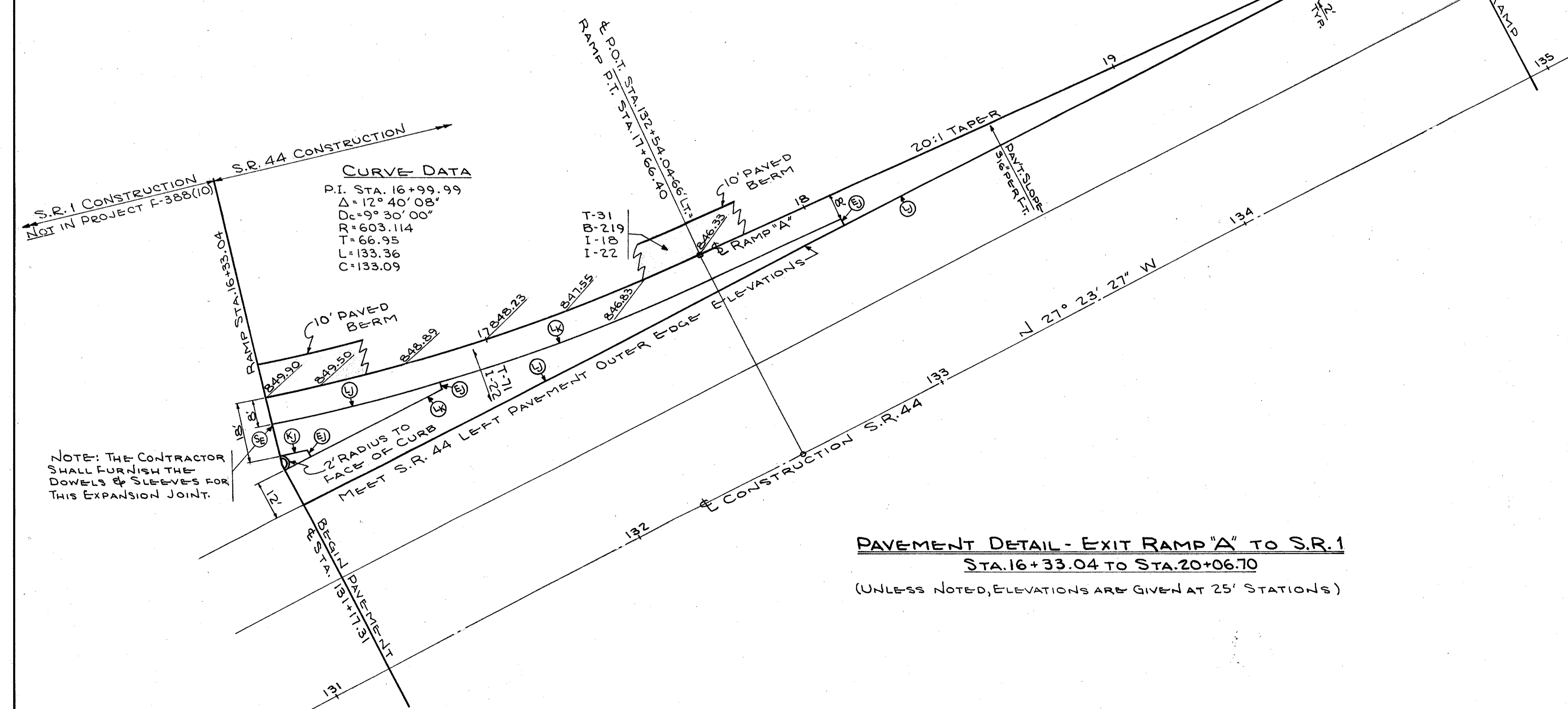
CURVE DATA - INNER EDGE
 P.I. = SURVEY BASE LINE
 P.O.T. STA. 27+17.20 - 13.00' LT.
 $\Delta = 13^\circ 30' 00''$
 $R = 376.58$
 $T = 44.57$
 $L = 88.13$

CURVE DATA - OUTER EDGE
 P.I. = SURVEY BASE LINE
 P.O.T. STA. 27+14.72 - 5.00' RT.
 $\Delta = 28^\circ 14' 15''$
 $R = 296.21$
 $T = 74.51$
 $L = 145.98$

TRANSITION DETAIL - RELOCATED AUBURN ROAD
 STA. 20+41.92 TO STA. 23+33.80
 (FOR EDGE OF PAVEMENT ELEVATIONS - SEE TABLE SH. NO. 165)

TRANSITION DETAIL
ESTIMATED QUANTITIES - CODE 6201

ITEM	DESCRIPTION	QUANTITY
T-35	ASPHALTIC CONCRETE SURFACE COURSE TYPE 'A' (70-85)	27.54 CU. YD.
B-35	ASPHALTIC CONCRETE LEVELING COURSE (70-85)	6.67 CU. YD.
B-119	CRUSHED AGGREGATE BASE COURSE	90.18 CU. YD.
I-22	SUBBASE	62.98 CU. YD.



CURVE DATA
 P.I. STA. 16+99.99
 $\Delta = 12^\circ 40' 08''$
 $D = 9^\circ 30' 00''$
 $R = 603.114$
 $T = 66.95$
 $L = 133.36$
 $C = 133.09$

PAVEMENT DETAIL - EXIT RAMP 'A' TO S.R. 1
 STA. 16+33.04 TO STA. 20+06.70
 (UNLESS NOTED, ELEVATIONS ARE GIVEN AT 25' STATIONS)

NOTE: THE CONTRACTOR SHALL FURNISH THE DOWELS & SLEEVES FOR THIS EXPANSION JOINT.

PAVEMENT DETAIL
ESTIMATED QUANTITIES - CODE 7221

ITEM	DESCRIPTION	QUANTITY
B-219	3" WATERPROOFED AGGREGATE BASE COURSE (TYPE "B")	34.60 CU. YD.
T-31	BITUMINOUS SURFACE TREATMENT	415.18 SQ. YD.
T-71	9" REINFORCED PORTLAND CEMENT CONCRETE PAVEMENT	467.50 SQ. YD.
I-12	CONCRETE CURB - STANDARD TYPE 6	6.00 LIN. FT.
I-18	STABILIZED CRUSHED AGGREGATE SHOULDERS & APPROACHES	60.55 CU. YD.
I-22	SUBBASE	103.54 CU. YD.

TRYGVE HOFF & ASSOCIATES
 1922 EAST 107TH STREET ENGINEERS CLEVELAND, OHIO

MISC. PAVEMENT DETAILS

SCALE 1" = 20' DATE

DESIGNED	DRAWN	TRACED	CHECKED	REVIEWED	DATE	REVISED
PCB	GE		T.L.L.	T.L.L.	10/11/58	