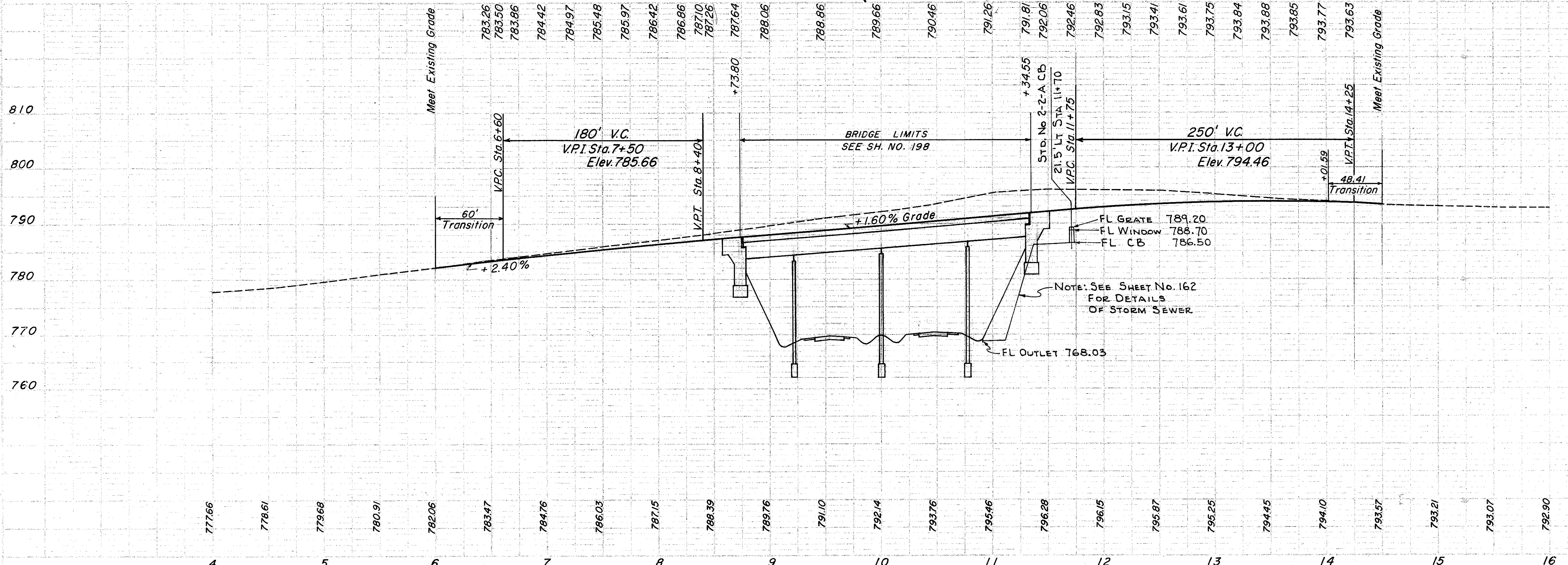


ROADWAY & PAVEMENT QUANTITIES

STATION TO STATION	REFERENCE NO.	ITEM	QUANTITY	UNIT	TOTALS
6+10 TO 6+95	1-R	RT.			
8+01.27 TO 8+51.27	2-R	LT.	500		
8+02.45 TO 8+64.95	3-R	RT.	625		
11+43.40 TO 12+05.90	4-R	LT.	500		
11+57.08 TO 12+07.08	5-R	RT.		8.5	
14+11	6-R	LT.			4.25
7+00 TO 13+00	7-R	RT.			
		TOTALS	425		8.5

STATION TO STATION	REFERENCE NO.	ITEM	QUANTITY	UNIT	TOTALS
6+10 TO 6+95	1-R	RT.			
8+01.27 TO 8+51.27	2-R	LT.	500		
8+02.45 TO 8+64.95	3-R	RT.	625		
11+43.40 TO 12+05.90	4-R	LT.	500		
11+57.08 TO 12+07.08	5-R	RT.		8.5	
14+11	6-R	LT.			4.25
7+00 TO 13+00	7-R	RT.			
		TOTALS	425		8.5



DRAINAGE QUANTITIES

STATION TO STATION	REFERENCE NO.	ITEM	QUANTITY	UNIT	TOTALS
13+98 TO 14+23	1-D	EXCAVATION FOR STRUCTURES	1.2	C.Y.	
10+82 TO 11+70	2-D	EXCAVATION FOR STRUCTURES	1.2	C.Y.	
		TOTAL	2.4	C.Y.	

STATION TO STATION	REFERENCE NO.	ITEM	QUANTITY	UNIT	TOTALS
13+98 TO 14+23	1-D	CONCRETE STRUCTURES	3.3	S.Y.	
10+82 TO 11+70	2-D	CONCRETE STRUCTURES	3.3	S.Y.	
		TOTAL	6.6	S.Y.	