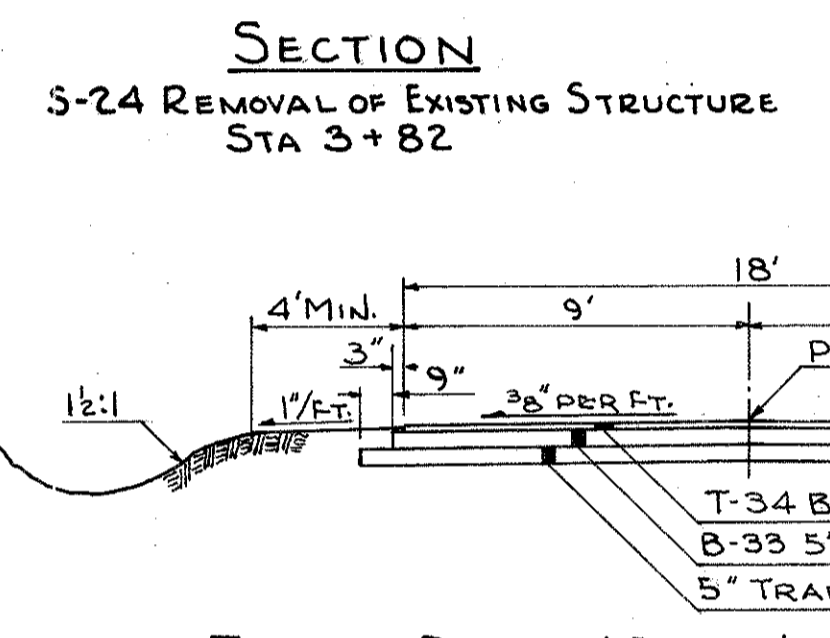
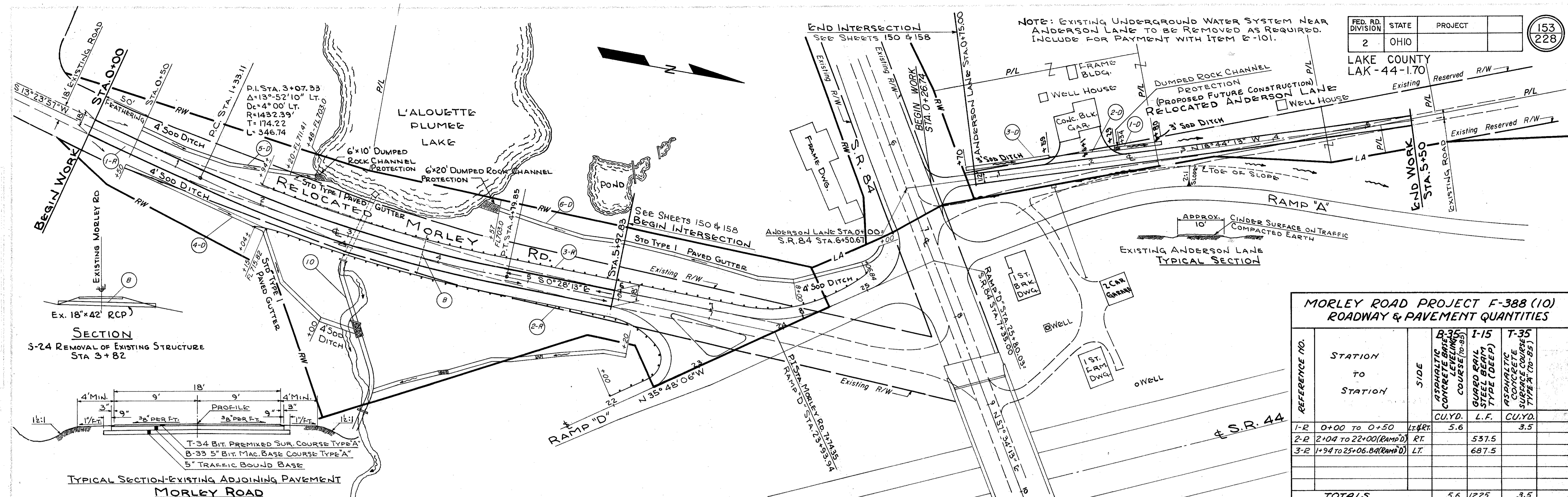
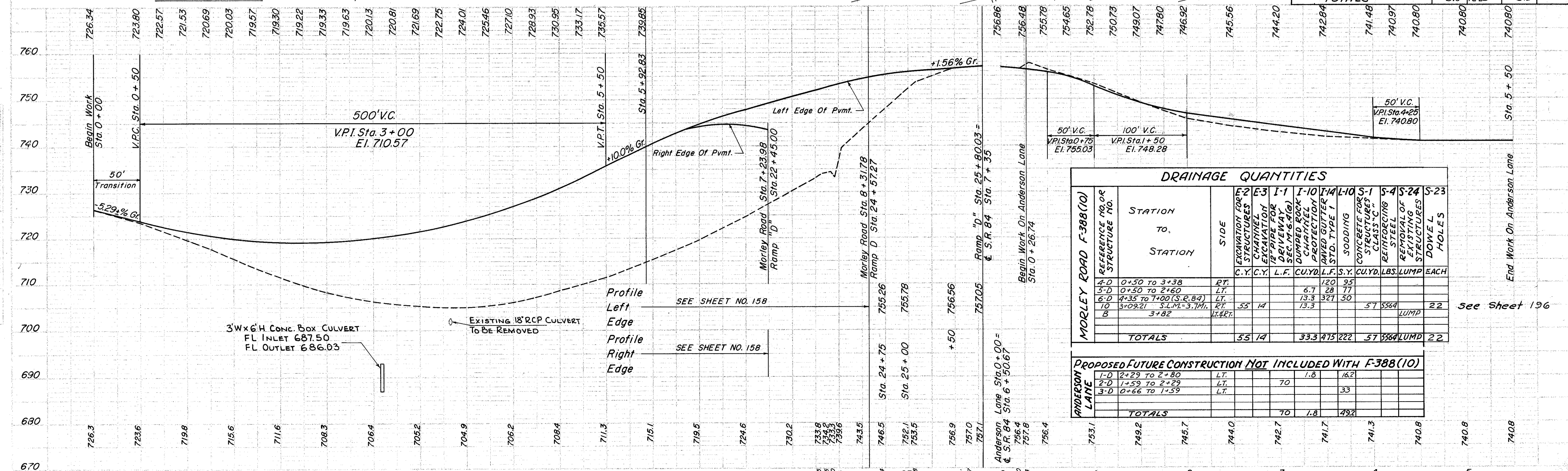


NOTE: EXISTING UNDERGROUND WATER SYSTEM NEAR ANDERSON LANE TO BE REMOVED AS REQUIRED. INCLUDE FOR PAYMENT WITH ITEM F-101.



**MORLEY ROAD PROJECT F-388 (10)
ROADWAY & PAVEMENT QUANTITIES**

REFERENCE NO.	STATION TO STATION	SIDE	B-35	T-15	T-35
			ASPHALTIC CONCRETE BASE COURSE (70-85) CU.YD.	GUARD RAIL STEEL BEAM TYPE (DEEP) L.F.	ASPHALTIC CONCRETE SURFACE COURSE TYPE 'A' (70-85) CU.YD.
1-R	0+00 TO 0+50	LT. & RT.	5.6		3.5
2-R	2+04 TO 22+00 (RAMP D)	RT.		537.5	
3-R	1+94 TO 25+06.84 (RAMP D)	LT.		687.5	
TOTALS			5.6	1225	3.5



DRAINAGE QUANTITIES

REFERENCE NO. OR STRUCTURE NO.	STATION TO STATION	SIDE	E2 E3		I-1 I-10		I-4 I-10		S-1		S-4 S-24		S-23	
			C.Y.	C.Y.	L.F.	C.U.YD.	L.F.	S.Y.	C.U.YD.	LBS.	LUMP	EACH	HOLES	
4-D	0+50 TO 3+38	RT.					120	95						
5-D	0+50 TO 2+60	LT.				6.7	28	77						
6-D	4+35 TO 7+00 (S.R. 84)	LT.				13.3	327	50						
10	3+09.21 S.L.M. = 3.7 MI.	RT.	55	14		13.3			57	5564		22		
B	3+82	LT. & RT.												
TOTALS			55	14		33.3	475	222	57	5564	LUMP	22		

PROPOSED FUTURE CONSTRUCTION NOT INCLUDED WITH F-388 (10)

REFERENCE NO.	STATION TO STATION	SIDE	QUANTITY
1-D	2+29 TO 2+80	LT.	1.8
2-D	1+59 TO 2+29	LT.	70
3-D	0+66 TO 1+59	LT.	33
TOTALS			70