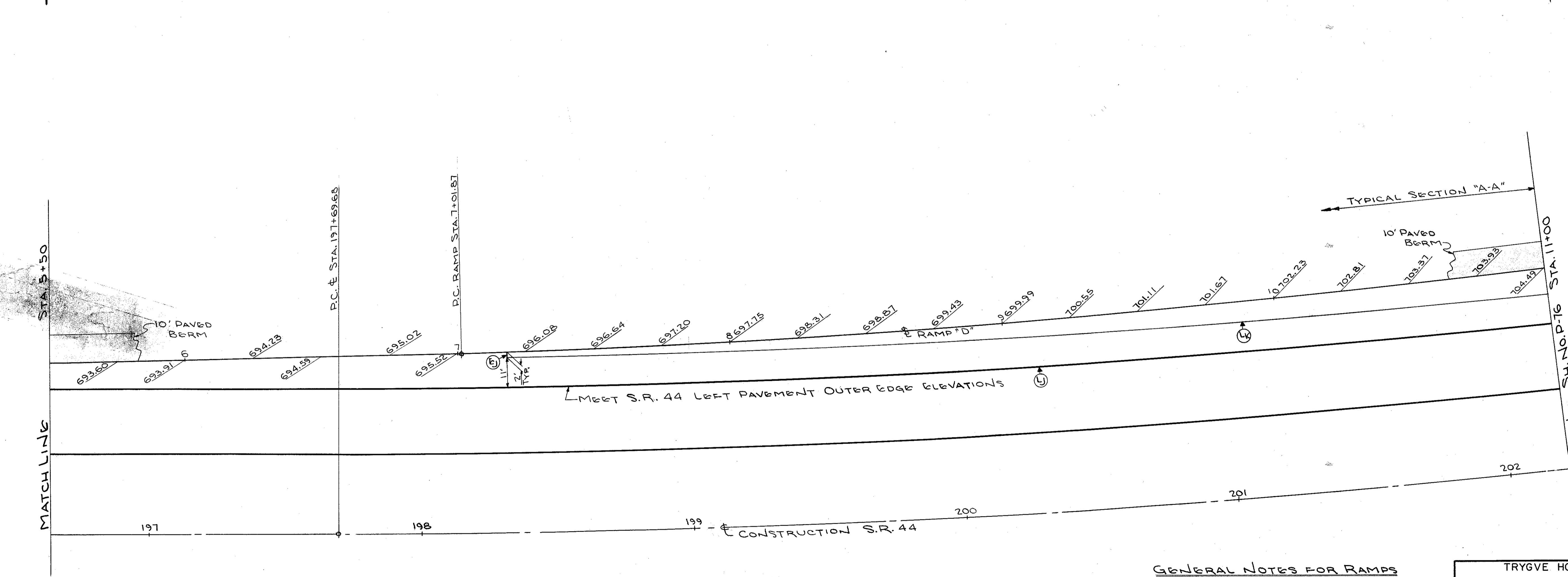
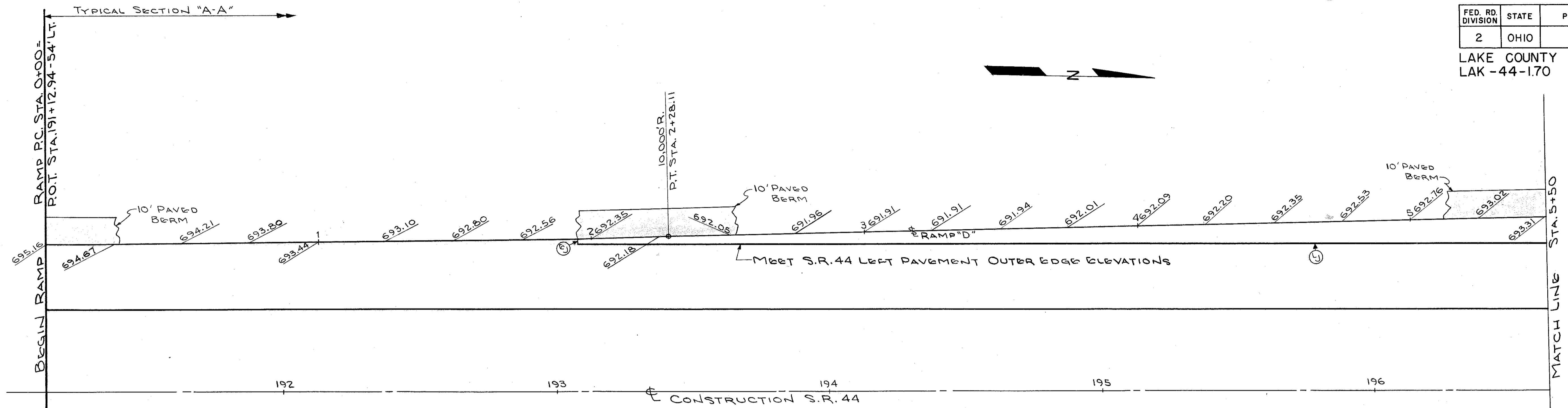


FED. RD. DIVISION	STATE	PROJECT
2	OHIO	

135
228

LAKE COUNTY
LAK-44-1.70



ESTIMATED QUANTITIES

ITEM	DESCRIPTION	QUANTITY
B-219	3" WATERPROOFED AGGREGATE BASE COURSE (TYPE "B")	101.85 CU.YD.
I-18	STABILIZED CRUSHED AGGREGATE SHOULDERS & APPROACHES	178.24 CU.YD.
I-22	SUBBASE	287.91 CU.YD.
T-31	BITUMINOUS SURFACE TREATMENT	1222.22 SQ.YD.
T-71	9" REINFORCED PORTLAND CEMENT CONCRETE PAVEMENT	1197.08 SQ.YD.

GENERAL NOTES FOR RAMPS
SEE SHEET NO. 132

JOINT SYMBOLS
SEE SHEET NO. 132

TRYGVE HOFF & ASSOCIATES
ENGINEERS
1922 EAST 107TH STREET CLEVELAND, OHIO

**RAMP "D"
PAVEMENT
DETAILS**

SCALE 1"=20' DATE

DESIGNED	DRAWN	TRACED	CHECKED	REVIEWED	DATE	REVISED
GOW	GOC		D.M.J.	T.L.L.	10/11/58	