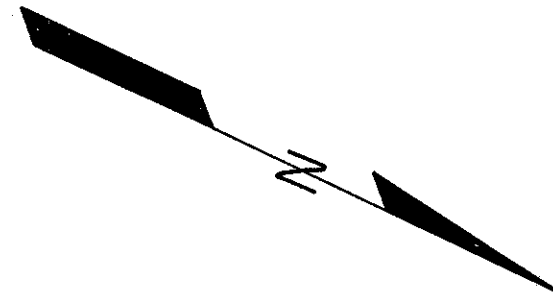
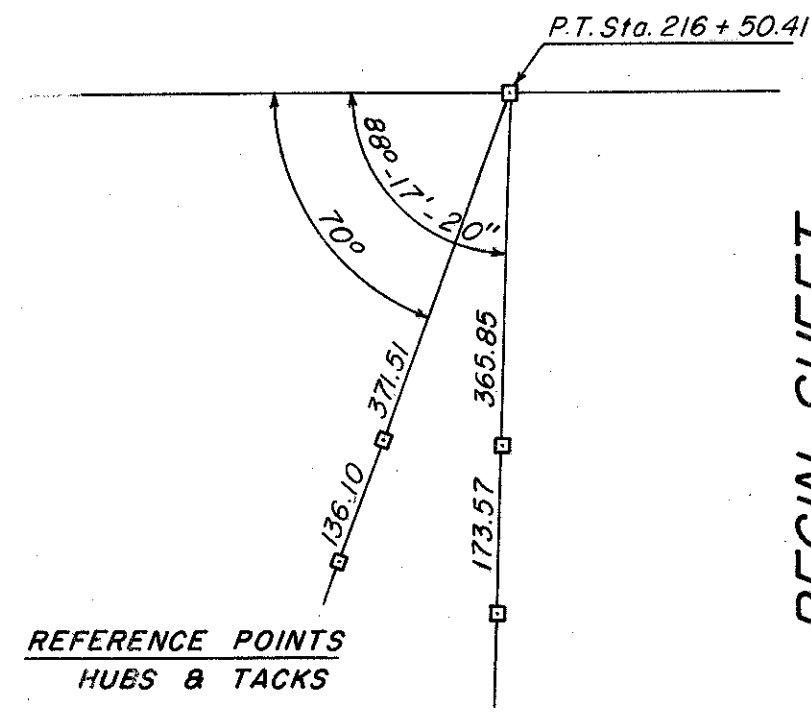


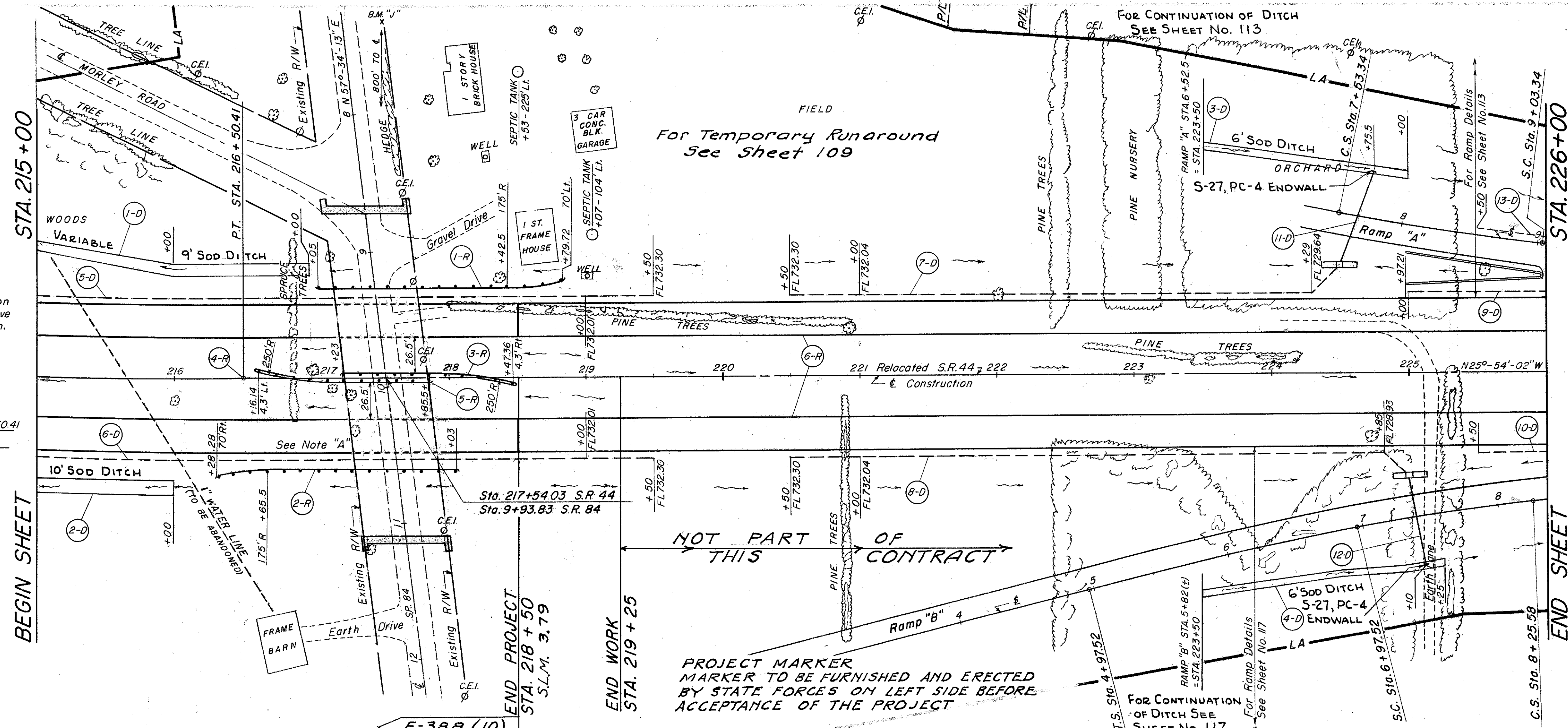
MICROFILMED
JUN 11 1987



NOTE "A": Top Of Rail For Pier Protection Guard Rail And Barrier Rail Shall Be 24" Above Pavement Edge Throughout It's Entire Length.



B.M. "J" ELEV. - 754.50
X MARK IN E. SIDE CULVERT WALL, NORTH SIDE OF RT. 84 AT STA. 217+50 (800' W)

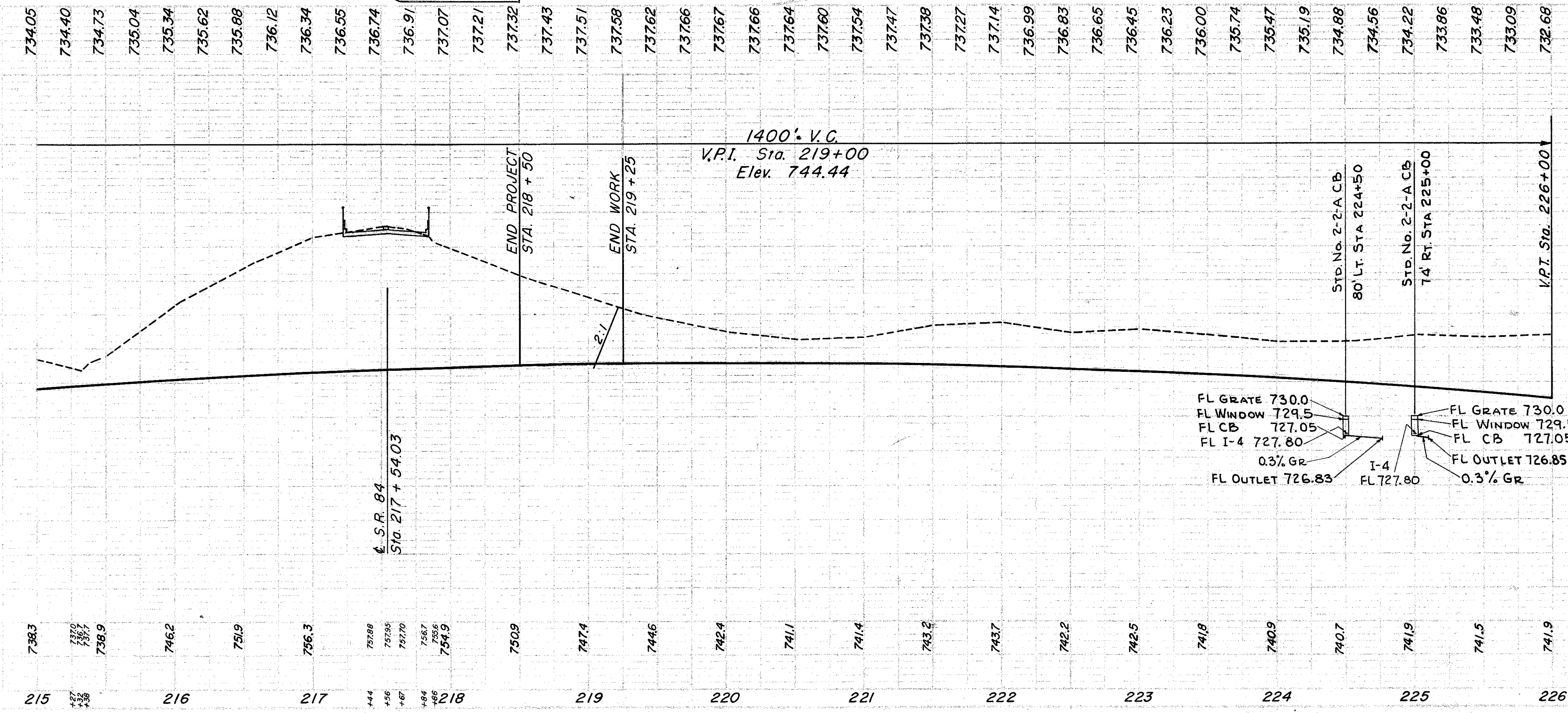


PROJECT MARKER TO BE FURNISHED AND ERECTED BY STATE FORCES ON LEFT SIDE BEFORE ACCEPTANCE OF THE PROJECT

FED. RD. DIVISION	STATE	PROJECT	
2	OHIO		

LAKE COUNTY
LAK-44-170

26
228



REFERENCE NO.	STATION TO STATION	SIDE	MONUMENT ASSEMBLIES	EACH	L.F.	L.F. CUMULATIVE
1-R	217+05 TO 218+79.72	LT.	GUARD RAIL	175	175	
2-R	216+28.28 TO 218+03	RT.	STEEL BEAM	100	275	
3-R	217+23 TO 218+47.36	RT.	STEEL BEAM	100	375	
4-R	216+50.41	RT.	STEEL BEAM	1	376	
5-R	216+16.14 TO 217+85.5	RT.	STEEL BEAM	100	476	
6-R	215+00 TO 218+50	LT.	STEEL BEAM	1037	1513	
TOTAL				1	550	50 1037

* SEE NOTE, SHEET No. 3

REFERENCE NO. OR STRUCTURE NO.	STATION TO STATION	SIDE	EXCAVATION FOR STRUCTURES	C.Y.	L.F.	L.F.	L.F.	L.F.	EACH	L.F.	S.Y. CUMULATIVE
1-2	215+00 TO 217+00	LT.	CONCRETE FOR STRUCTURES CLASS "E"	200	200						
1-4	215+00 TO 216+00	LT.	CONCRETE FOR STRUCTURES CLASS "E"	116	116						
1-4	215+00 TO 218+50	LT.	CONCRETE FOR STRUCTURES CLASS "E"	350	350						
1-4	215+00 TO 218+50	RT.	CONCRETE FOR STRUCTURES CLASS "E"	350	700						
1-2	215+00 TO 217+00	LT.	CONCRETE FOR STRUCTURES CLASS "E"	110	110						
1-2	215+00 TO 216+00	LT.	CONCRETE FOR STRUCTURES CLASS "E"	125	235						
1-2	215+00 TO 218+50	LT.	CONCRETE FOR STRUCTURES CLASS "E"	100	335						
1-2	215+00 TO 218+50	RT.	CONCRETE FOR STRUCTURES CLASS "E"	100	435						
1-2	215+00 TO 218+50	LT.	CONCRETE FOR STRUCTURES CLASS "E"	100	535						
1-2	215+00 TO 218+50	RT.	CONCRETE FOR STRUCTURES CLASS "E"	100	635						
1-2	215+00 TO 218+50	LT.	CONCRETE FOR STRUCTURES CLASS "E"	100	735						
1-2	215+00 TO 218+50	RT.	CONCRETE FOR STRUCTURES CLASS "E"	100	835						
1-2	215+00 TO 218+50	LT.	CONCRETE FOR STRUCTURES CLASS "E"	100	935						
1-2	215+00 TO 218+50	RT.	CONCRETE FOR STRUCTURES CLASS "E"	100	1035						
1-2	215+00 TO 218+50	LT.	CONCRETE FOR STRUCTURES CLASS "E"	100	1135						
1-2	215+00 TO 218+50	RT.	CONCRETE FOR STRUCTURES CLASS "E"	100	1235						
1-2	215+00 TO 218+50	LT.	CONCRETE FOR STRUCTURES CLASS "E"	100	1335						
1-2	215+00 TO 218+50	RT.	CONCRETE FOR STRUCTURES CLASS "E"	100	1435						
TOTAL				216	216	216	216	216	216	216	216

PLAN & PROFILE STA. 215+00 TO STA. 226+00