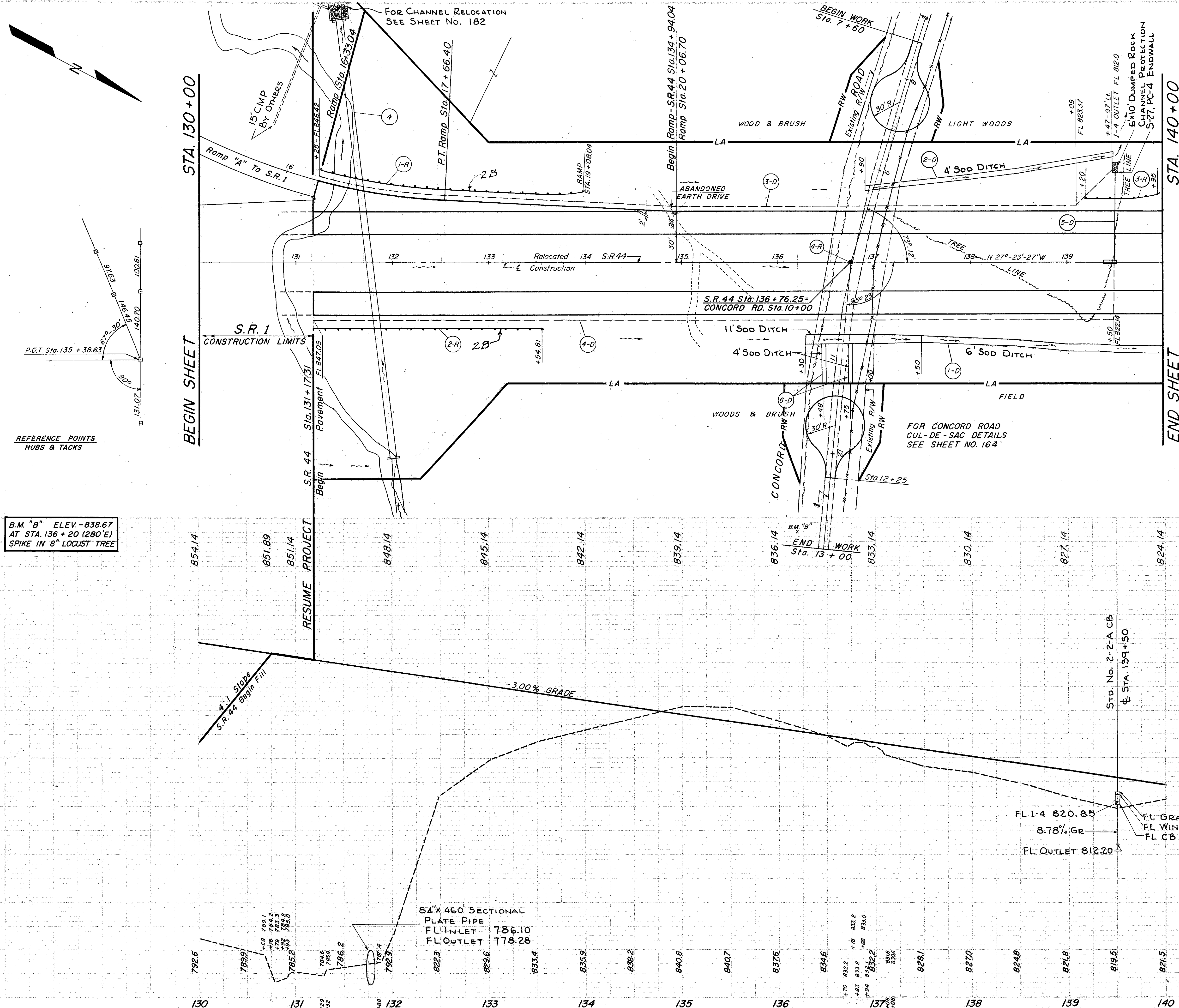


LAKE COUNTY
LAK-44-170

ROADWAY & PAVEMENT QUANTITIES

REFERENCE NO.	STATION TO STATION	SIDE	MONUMENT ASSEMBLIES		
			I-8	I-15	I-15
			GUARD RAIL STEEL BEAM TYPE (DEEP)	GUARD RAIL STEEL BEAM TYPE (DEEP)	GUARD RAIL STEEL BEAM DEEP - 2B
1-R	RAMP STA. 16+33.04 TO 19+08.04	LT.			275
2-R	131+17.31 TO 139+54.81	RT.			237.5
3-R	139+20 TO 139+95	LT.		75	
4-R	136+76.25	E	1		
TOTALS			1	75	512.5

STATION TO STATION	REFERENCE NO.	SIDE	DRAINAGE QUANTITIES		
			I-4	I-5	I-8
			FOR UNDERDRAINS	FOR UNDERDRAINS	CATCH BASIN
1-D 136+30 TO 140+00		RT.			
2-D 136+90 TO 139+47		LT.			
3-D 131+25 TO 139+50		LT.	10	1	
4-D 131+17.31 TO 139+50		RT.	10		
5-D 139+50		E<.			
6-D 136+48 E 136+75		RT.			
7-D 131+76.50 S.L.M.=2.15 MI. (TR. 4)		RT.			
TOTALS			20	1	1



PLAN & PROFILE STA. 130+00 TO STA. 140+00

REFERENCE POINTS
HUBS & TACKS

B.M. "B" ELEV. -838.67
AT STA. 136+20 (280'E)
SPIKE IN 8" LOCUST TREE

SEE SH. 181