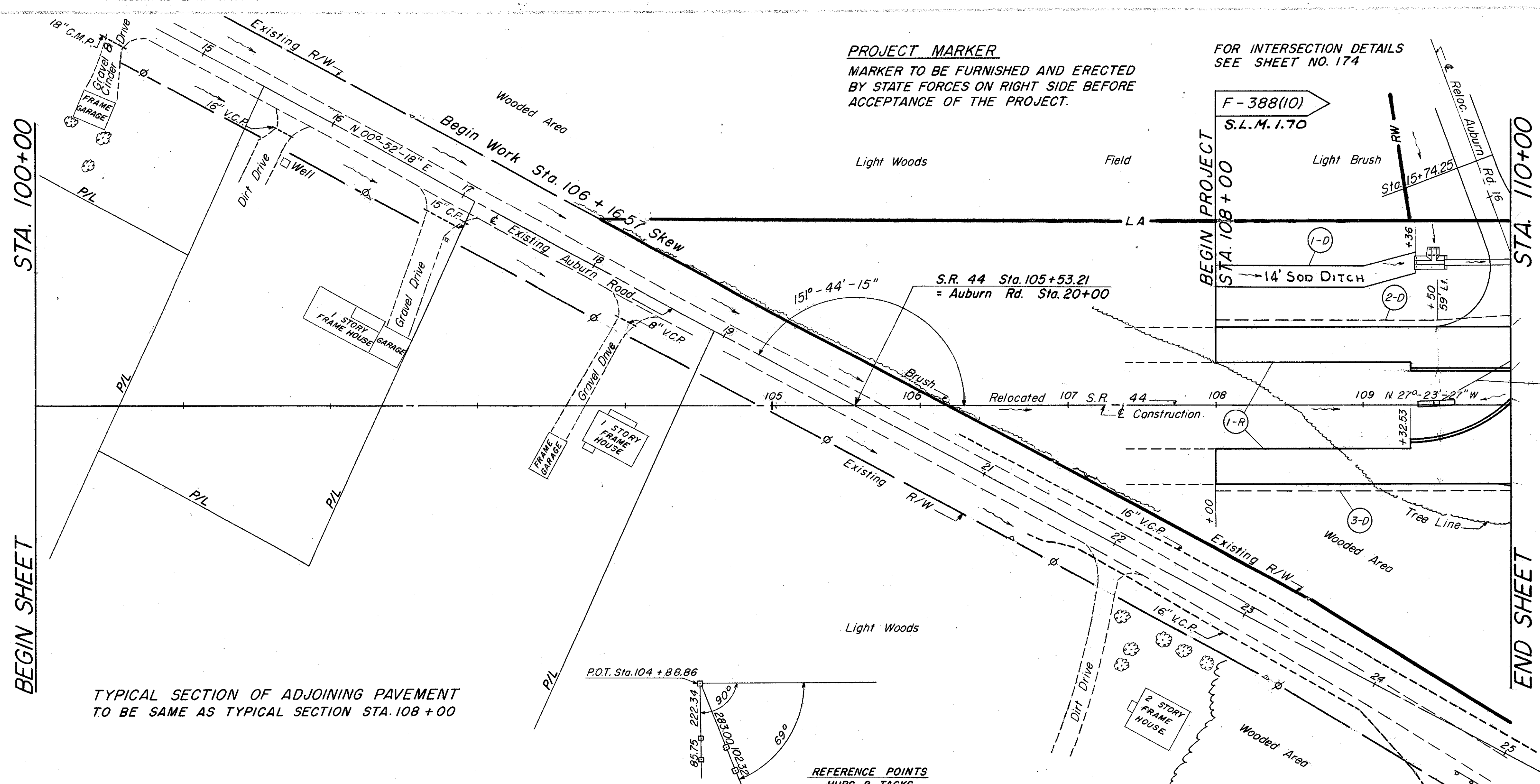


LAKE COUNTY
LAK-44-170

PROJECT MARKER
MARKER TO BE FURNISHED AND ERECTED BY STATE FORCES ON RIGHT SIDE BEFORE ACCEPTANCE OF THE PROJECT.

FOR INTERSECTION DETAILS SEE SHEET NO. 174



TYPICAL SECTION OF ADJOINING PAVEMENT TO BE SAME AS TYPICAL SECTION STA. 108+00

REFERENCE POINTS
HUBS & TACKS

B.M. "AC" ELEV. - 939.98
SPIKE IN 10" CHERRY TREE AT AUBURN RD. STA. 3+68(30'W)

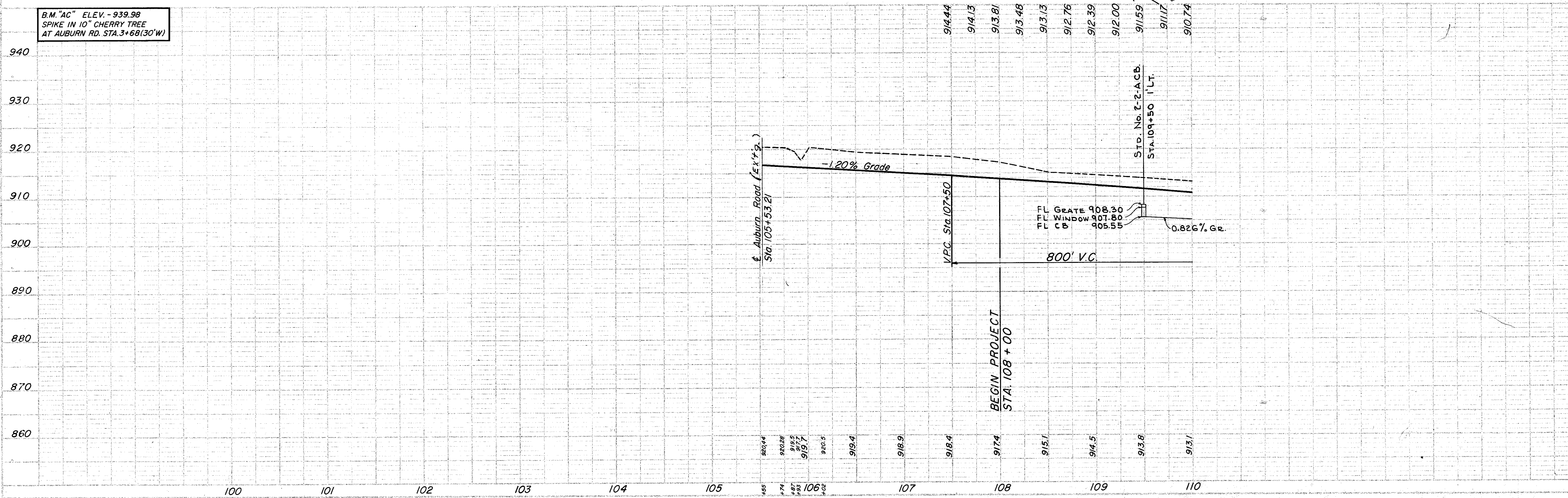
ROADWAY & PAVEMENT QUANT.

REFERENCE No.	STATION TO STATION	SIDE	I-22 SUBBASE (12" VADDED DEPTH)	Cu. Yd.
* 1-R	108+00 TO 110+00	Lt. & Rt.	559.27	

* SEE NOTE, SHEET NO. 3

DRAINAGE QUANTITIES

REFERENCE No.	STATION TO STATION	SIDE	DRAINAGE QUANTITIES					SOODING Sq. Yd.
			15" STORM SEW. UNDER PAVT. SEC. M-6.58 OR M-6.88 L.F.	6" PIPE UNDER DRAIN (DEEP) L.F.	CATCH BASIN STD. No. 2-2A EACH	PAVED GUTTER TYPE A-SPEC. L.F.		
1-D	108+00 TO 109+36	LT.					218	
2-D	108+00 TO 110+00	LT.		200				
3-D	108+00 TO 110+00	RT.		200				
4-D	109+50 TO 110+00	LT.	57		1	20	6.67	
TOTALS			57	400	1	20	224.67	



PLAN & PROFILE STA. 100+00 TO STA. 110+00