

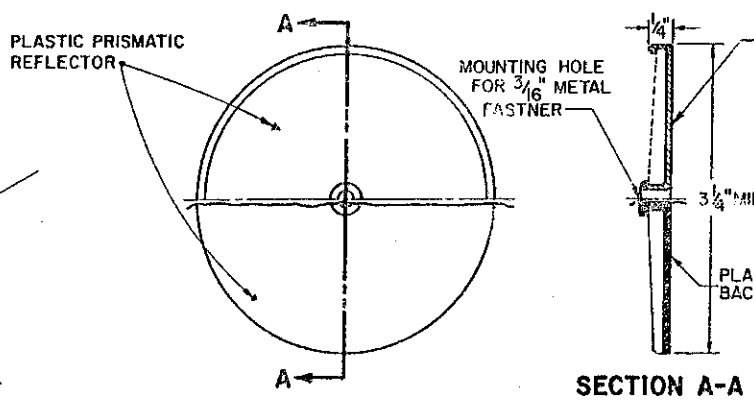
- = TYPE A DELINEATORS, COLORLESS
- = TYPE B DELINEATORS, YELLOW
- = TYPE C DELINEATORS, COLORLESS
- = TYPE D DELINEATORS, YELLOW

TYPICAL DELINEATOR PLACEMENT

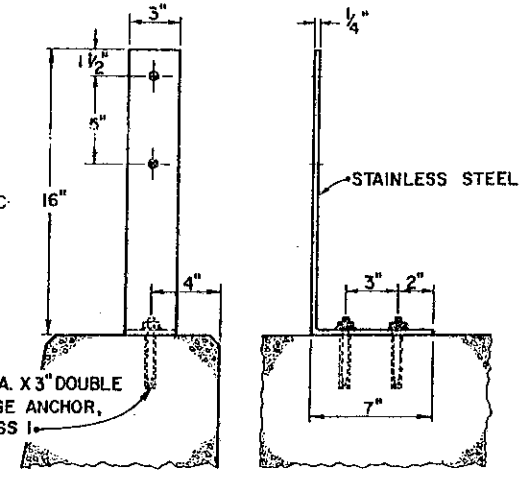
SPACING ON RAMP HORIZONTAL CURVES

RADI (feet)		DEGREE OF CURVE (MAX)	SPACING ON CURVE	* TRANSITION SPACING
FROM	TO			
TANGENT	1201	5	200'	200'
1200	1001	6	100'	200'
1000	801	7	90'	200'
800	601	9	80'	160'
600	476	12	70'	140'
475	301	19	60'	120'
300	—	—	50'	100'

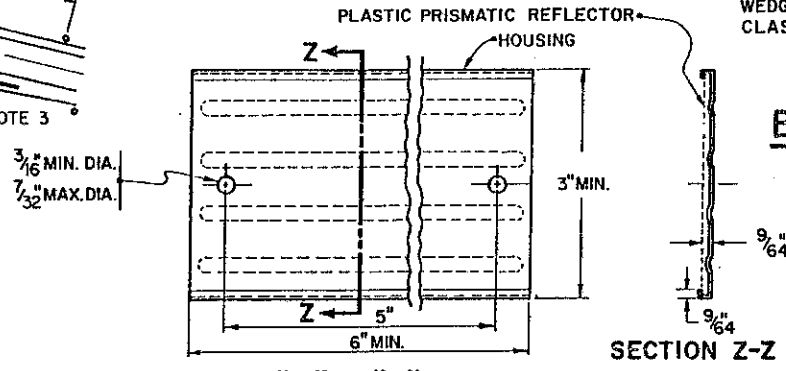
* FROM TANGENT TO 12° CURVE, TRANSITION SPACING = 200' TO 140' TO 70'
 FROM 19° CURVE TO TANGENT, TRANSITION SPACING = 60' TO 120' TO 200'



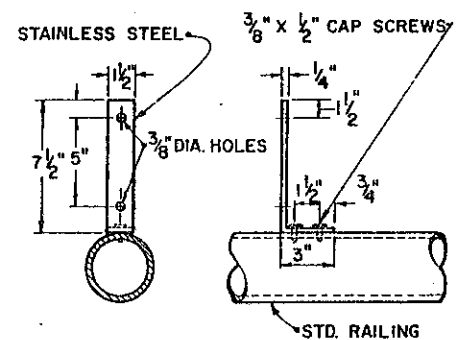
TYPE "A" & "B" DELINEATOR



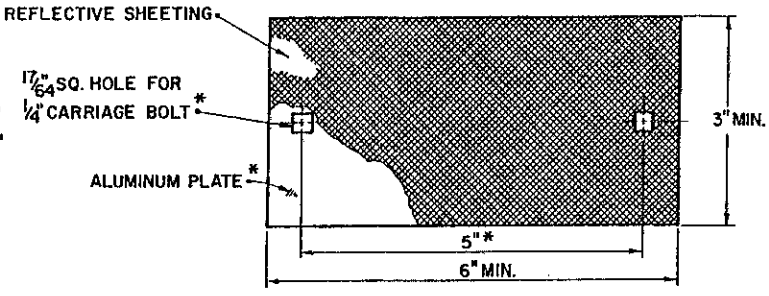
BRIDGE PARAPET BRACKET



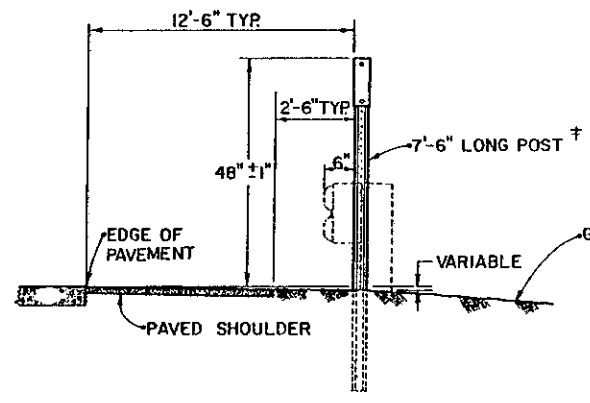
TYPE "C" & "D" DELINEATOR



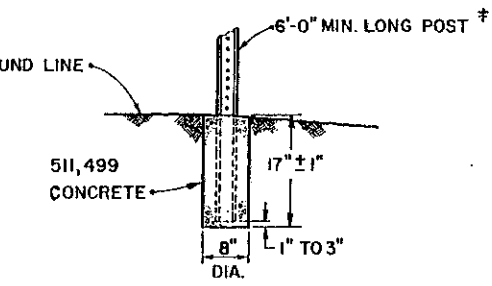
BRIDGE RAIL BRACKET



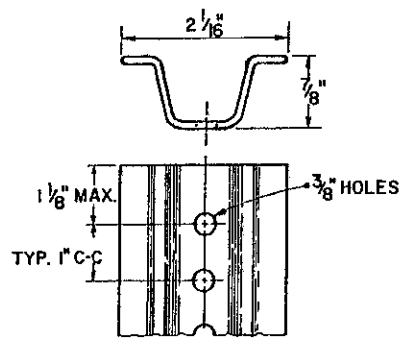
TYPE "C" & "D" DELINEATOR



LATERAL PLACEMENT



ALTERNATE CONCRETE EMBEDMENT



NO. 1 STEEL DRIVE POST

* DIMENSIONS GIVEN APPLY ONLY TO REMOVABLE REFLECTOR PLATES AS USED WITH STEEL POST AND BRIDGE BRACKETS.
 † DIMENSIONS GIVEN APPLY ONLY TO DELINEATORS UTILIZING A STEEL DRIVE POST.

- NOTES:**
- TYPE "A" DELINEATORS SHALL BE SPACED ON THE RIGHT OF THE THROUGH ROADWAY AT 400-FOOT INTERVALS WITHOUT REGARD TO CURVES. TYPE "B" DELINEATORS, IF USED, SHALL BE LOCATED ON THE LEFT OF THE THROUGH ROADWAY.
 - DELINEATORS SHALL BE PROVIDED ON AT LEAST ONE SIDE OF INTERCHANGE RAMPS AND SHALL CONFORM TO THE RESPECTIVE EDGE LINE COLOR.
 - NO DELINEATORS SHALL BE PLACED IN A PAVED BERM.
 - WHEN THE DEGREE OF CURVATURE ON RAMPS REQUIRE LESS THAN 200-FOOT SPACING, THE DELINEATORS SHALL BE PLACED ON THE OUTSIDE OF THE CURVE IN RELATION TO THE FLOW OF TRAFFIC.
 - TAMPER RESISTANT FASTENERS SHALL BE USED TO ATTACH DELINEATORS TO DRIVE POSTS OR BRACKETS.
 - OMIT DELINEATORS IF WITHIN 50 FEET OF A MILE MARKER.

DELINEATORS SHALL CONFORM WITH C & M SPECIFICATION 620.

BUREAU OF DESIGN SERVICES DIVISION OF HIGHWAYS OHIO DEPARTMENT OF TRANSPORTATION	
TRAFFIC CONTROL	DATE
DELINEATOR DETAILS	12/1/75 8/19/77 3/29/79 2/26/82 4/5/82
STANDARD CONSTRUCTION DRAWING TC-61.10	
APPROVED: <i>E. J. Schuyler</i> Engineer of Design Services	