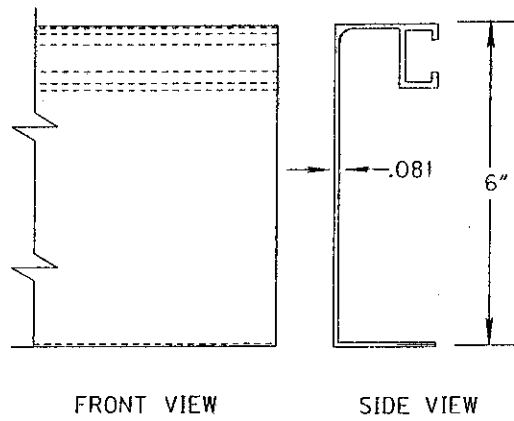


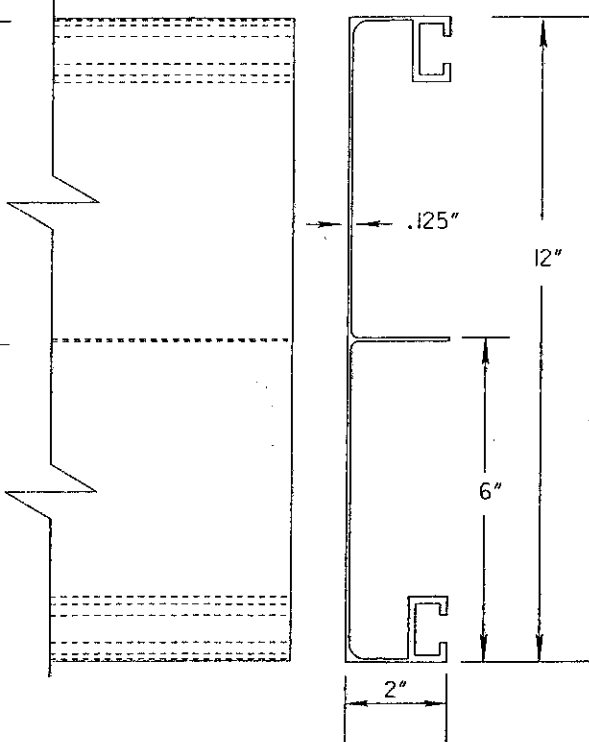
6" BOLTED
EXTRUSION PANEL



FRONT VIEW

SIDE VIEW

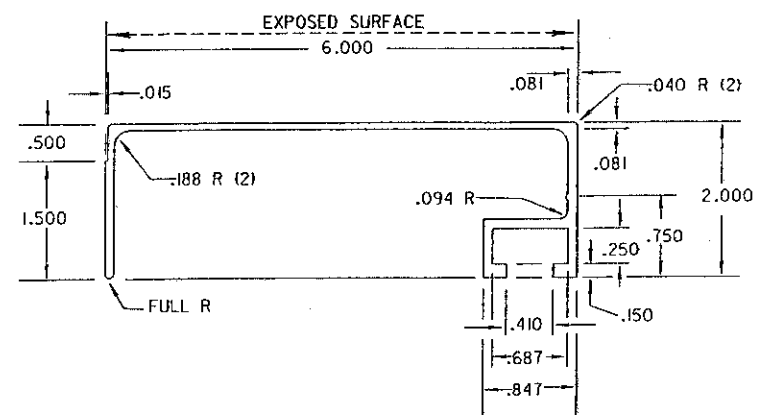
12" BOLTED
EXTRUSION PANEL



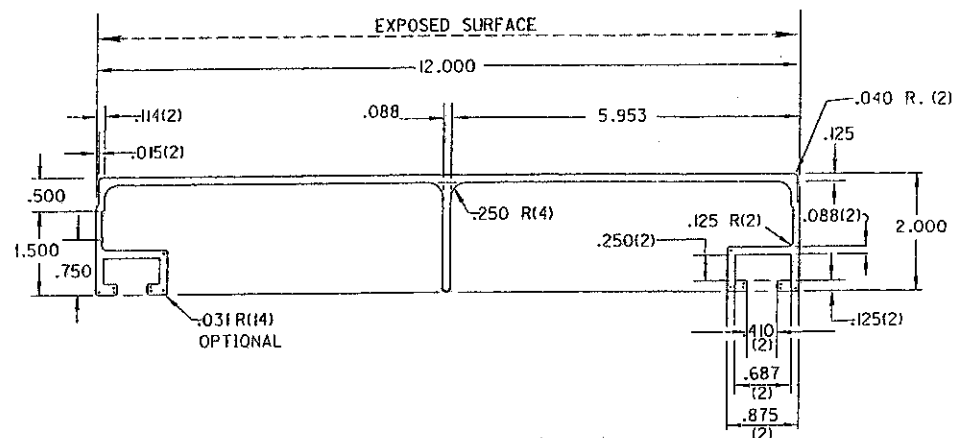
FRONT VIEW

SIDE VIEW

6" SIGN EXTRUSION

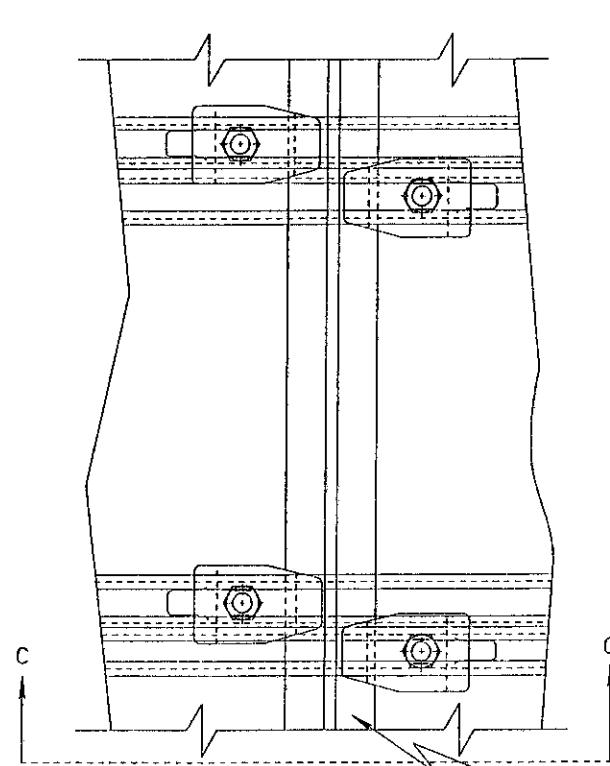


12" SIGN EXTRUSION



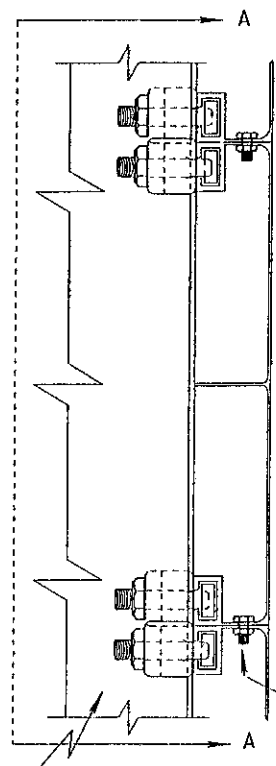
NOTES

1. COMBINATIONS OF 6" AND 12" PANELS ARE TO BE USED TO ATTAIN REQUIRED SIGN HEIGHT.
2. THE PANELS SHALL BE ERECTED HORIZONTALLY AND BOLTED TOGETHER ON 24" CENTERS.
3. THE PANELS SHALL BE FASTENED TO EACH VERTICAL MEMBER WITH MOUNTING CLIPS.
4. ALL DIMENSIONS ARE IN INCHES. STANDARD COMMERCIAL TOLERANCES FOR EXTRUDED SHAPES APPLY.

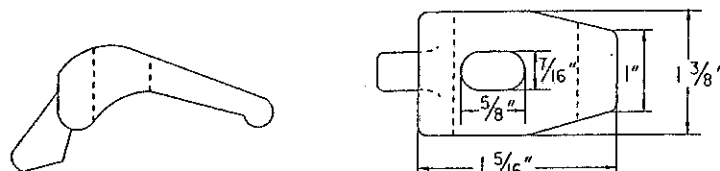


SECTION A-A

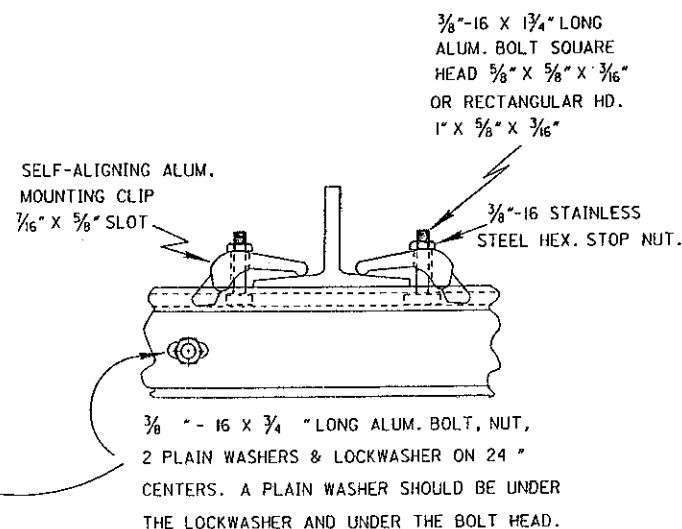
BEAM SUPPORT



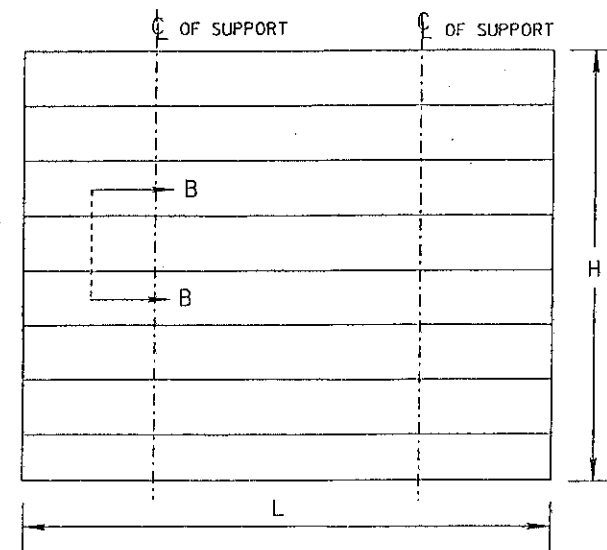
SECTION B-B



CLIP DETAIL



SECTION C-C



GENERAL ARRANGEMENT

BUREAU OF DESIGN SERVICES DIVISION OF HIGHWAYS OHIO DEPARTMENT OF TRANSPORTATION	
TRAFFIC CONTROL	DATE 01/03/94
ALUMINUM BOLTED-EXTRUSION PANEL SIGN	
STANDARD CONSTRUCTION DRAWING	TC-51.12
APPROVED <i>[Signature]</i> ENGR. OF DESIGN SERVICES	