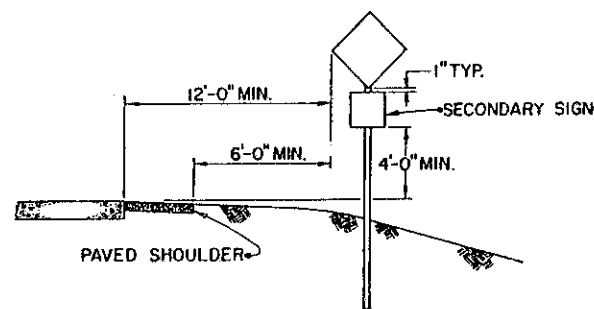
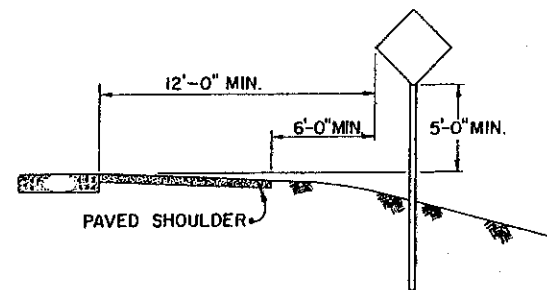


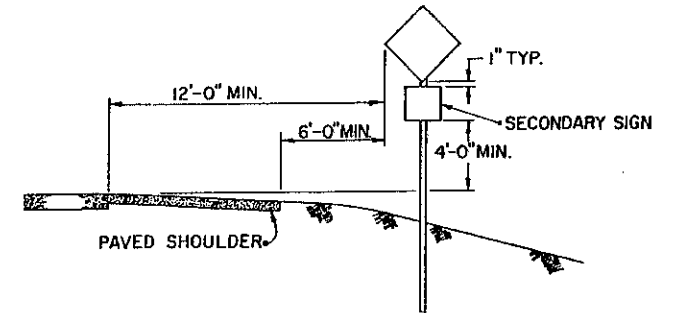
RURAL UNDIVIDED



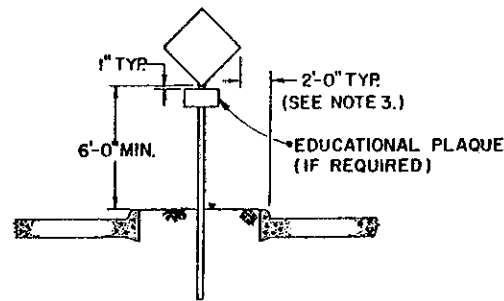
**RURAL UNDIVIDED
(W / SECONDARY SIGN)**



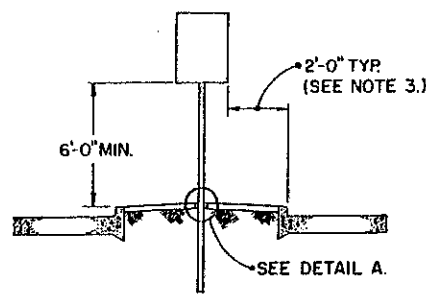
RURAL DIVIDED



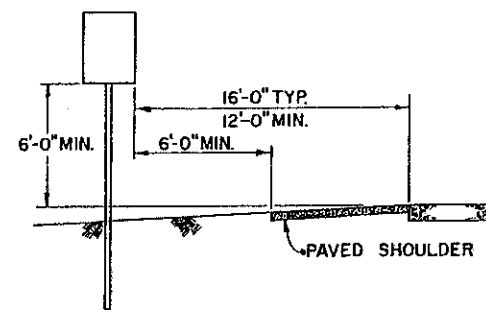
**RURAL DIVIDED
(W / SECONDARY SIGN)**



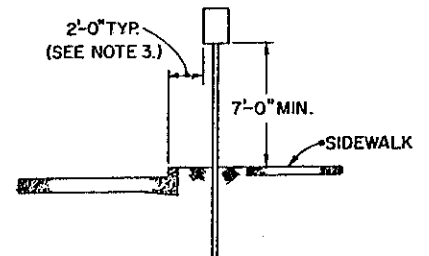
MEDIAN



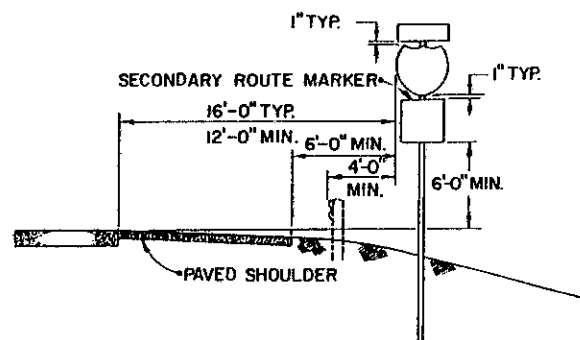
PAVED MEDIAN



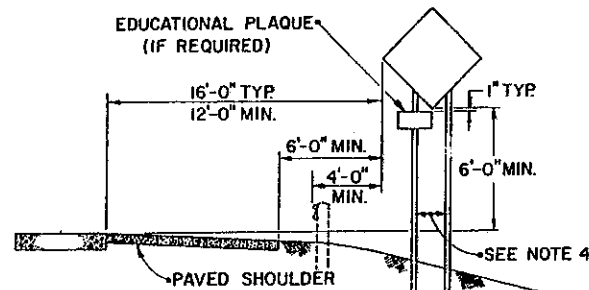
MEDIAN-EXPRESSWAY OR FREEWAY



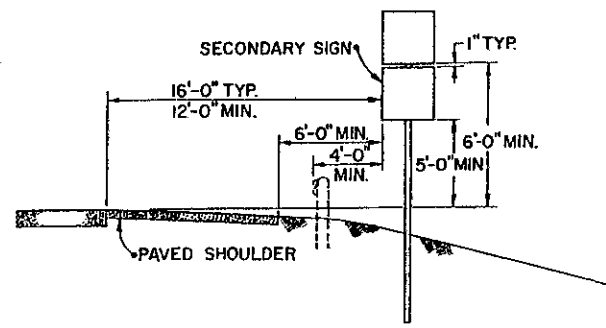
URBAN-RESIDENTIAL AND BUSINESS



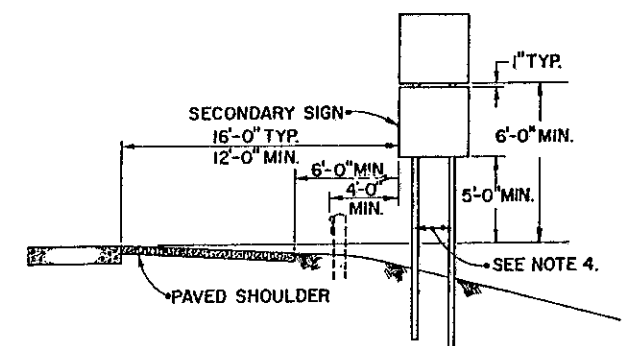
**EXPRESSWAY OR FREEWAY
(W / SECONDARY SIGN)**



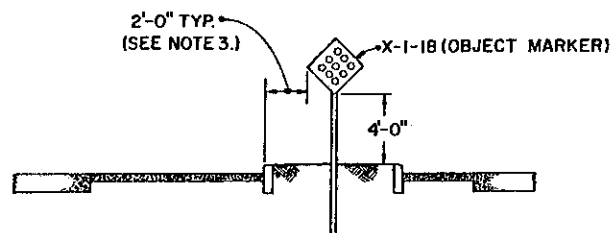
EXPRESSWAY OR FREEWAY



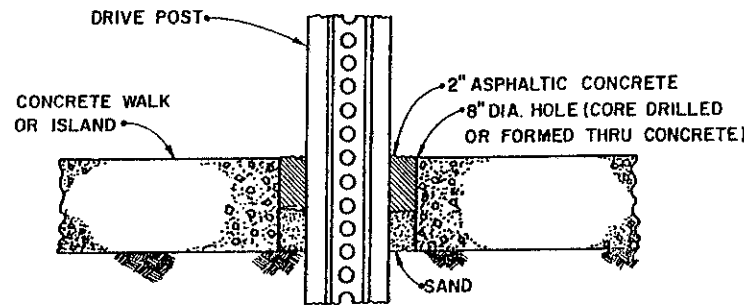
**EXPRESSWAY OR FREEWAY
(W / SECONDARY SIGN)**



**EXPRESSWAY OR FREEWAY
(W / SECONDARY SIGN)**



EXPRESSWAY OR FREEWAY



DETAIL A.

NOTES

1. SEE STANDARD CONSTRUCTION DRAWING TC-41.20 FOR DETAILS ON YIELDING SUPPORTS.
2. ALL SIGNS SHALL BE PLACED 90° TO THE ROADWAY, EXCEPT PARKING SIGNS WITH ARROW SHALL BE SET AT AN ANGLE OF NOT LESS THAN 30° NOR MORE THAN 45° WITH A LINE PARALLEL TO THE FLOW OF TRAFFIC.
3. A CLEARANCE OF ONE FOOT IS PERMISSIBLE WHERE SIDEWALK WIDTH IS LIMITED OR WHERE EXISTING POLES ARE CLOSE TO THE CURB.
4. SEE STANDARD CONSTRUCTION DRAWINGS TC-52.10 AND TC-52.20 FOR DIMENSIONS BETWEEN SUPPORTS.

ALL ITEMS SHALL CONFORM TO SUPPLEMENTAL SPECIFICATIONS 857 AND 957, UNLESS OTHERWISE SPECIFIED

BUREAU OF DESIGN SERVICES DIVISION OF HIGHWAYS OHIO DEPARTMENT OF TRANSPORTATION	
TRAFFIC CONTROL	DATE
TYPICAL SIGN PLACEMENT REGULATORY, WARNING AND ROUTE MARKER SIGNS	4/1/77 3/26/79
STANDARD CONSTRUCTION DRAWING	
TC-42.20	
APPROVED: <i>E. J. [Signature]</i> Engineer of Design Services	