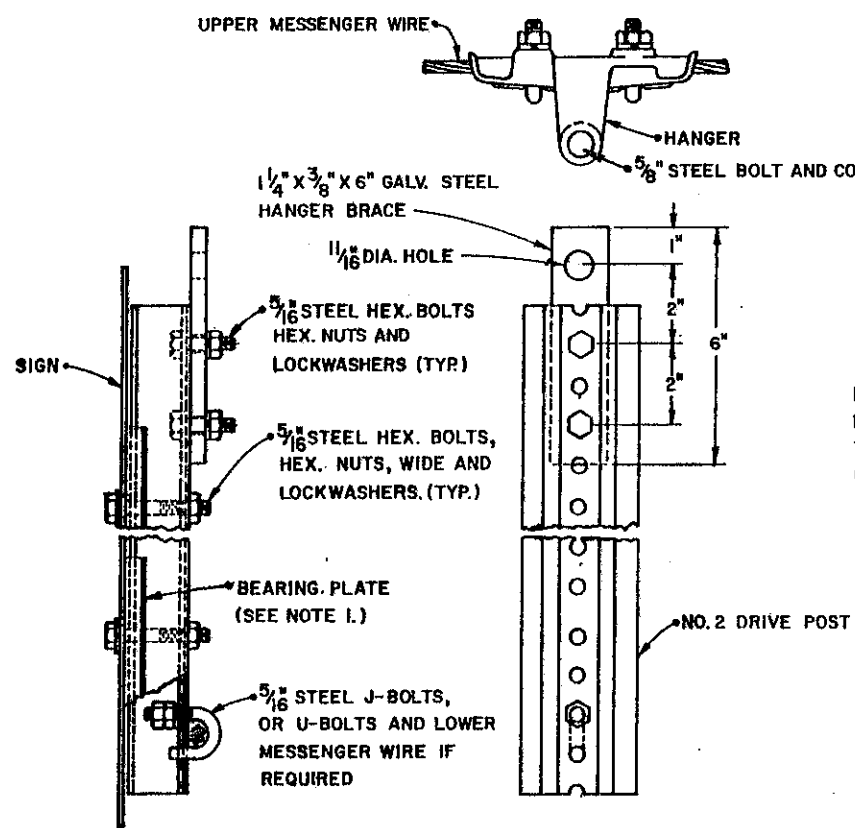


NOTES

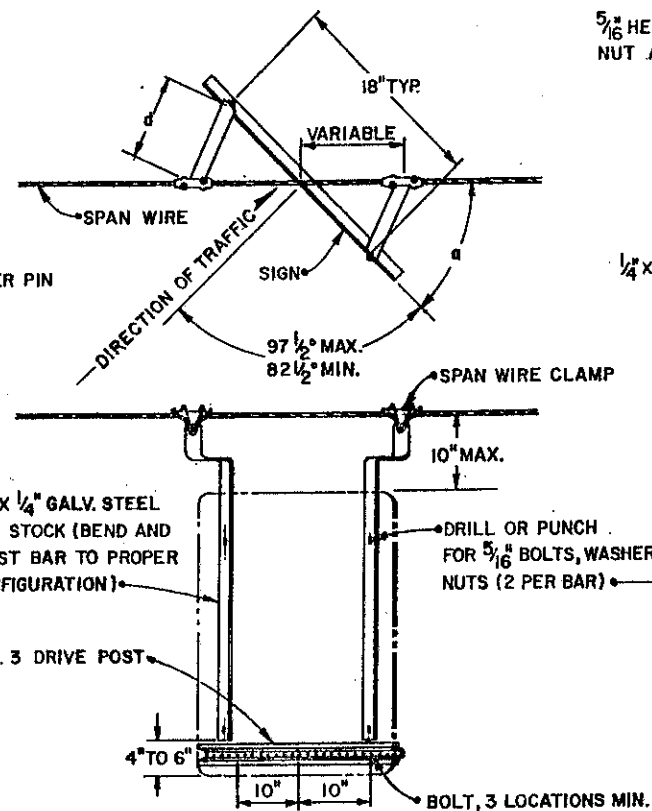
1. BEARING PLATES SHALL CONFORM TO DETAILS ON STANDARD CONSTRUCTION DRAWING TC-41.20.



2 REQUIRED PER SIGN

SIGN HANGER ASSEMBLY, SPAN WIRE

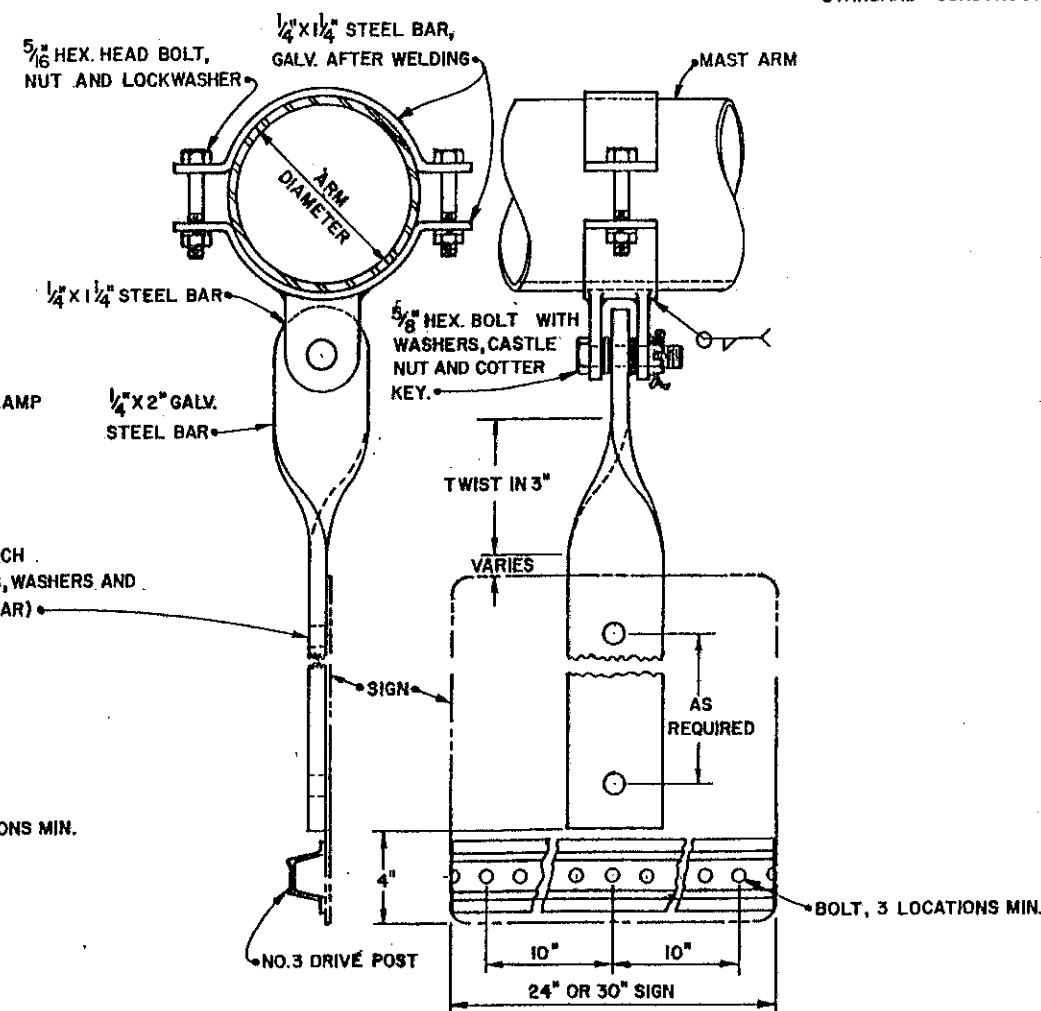
TYPE 1.



α	d (in.)
0°	0
15°	2.4
30°	4.7
45°	6.9
60°	9

SIGN HANGER ASSEMBLY, SPAN WIRE

TYPE 2.



SIGN HANGER ASSEMBLY, MAST ARM

ALL ITEMS SHALL CONFORM TO SUPPLEMENTAL SPECIFICATIONS 857 AND 957, UNLESS OTHERWISE SPECIFIED.

BUREAU OF DESIGN SERVICES DIVISION OF HIGHWAYS OHIO DEPARTMENT OF TRANSPORTATION	
TRAFFIC CONTROL	DATE
SPECIAL SIGN ATTACHMENTS	8/2/79
STANDARD CONSTRUCTION DRAWING	
TC-41.41	
APPROVED: <i>[Signature]</i> Engineer of Design Services	