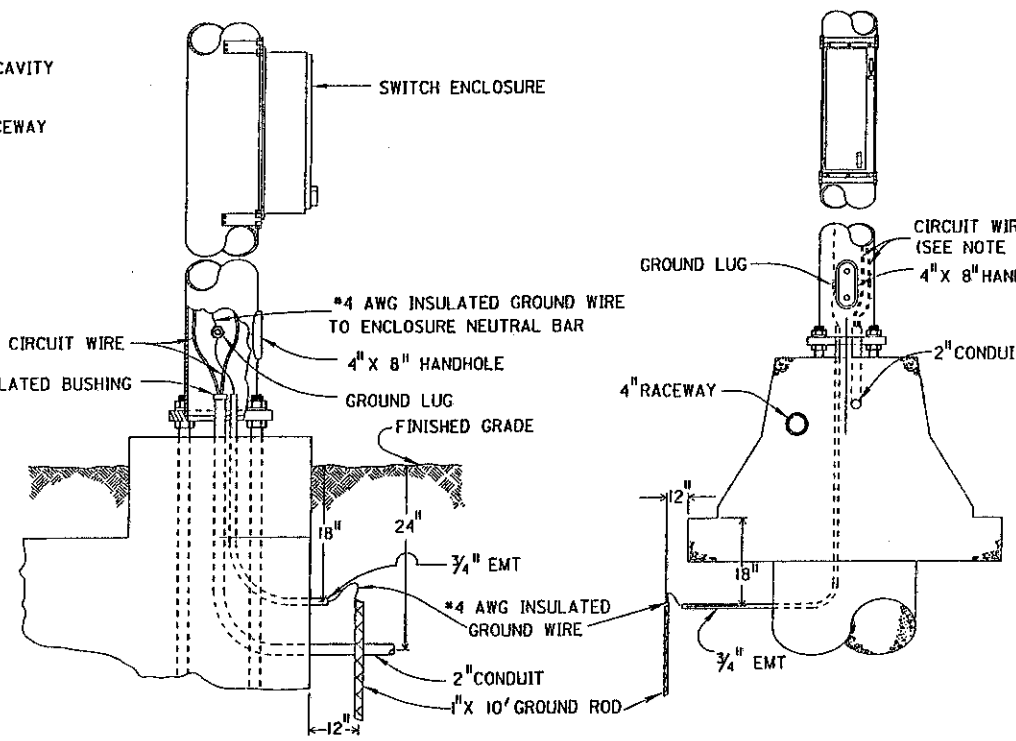
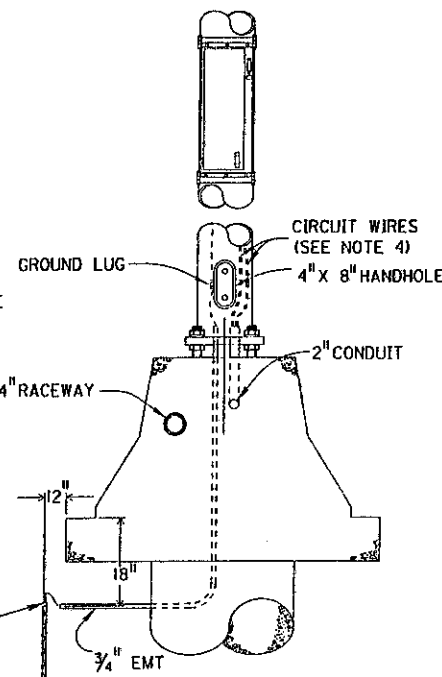


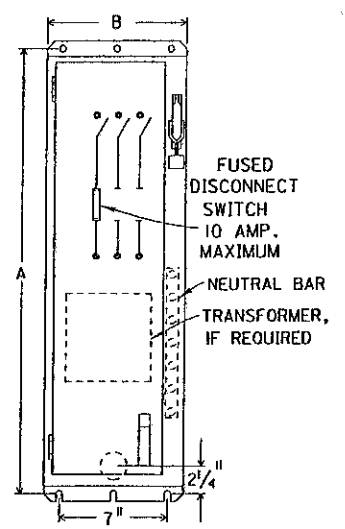
SIGN SERVICE



SECTION A-A



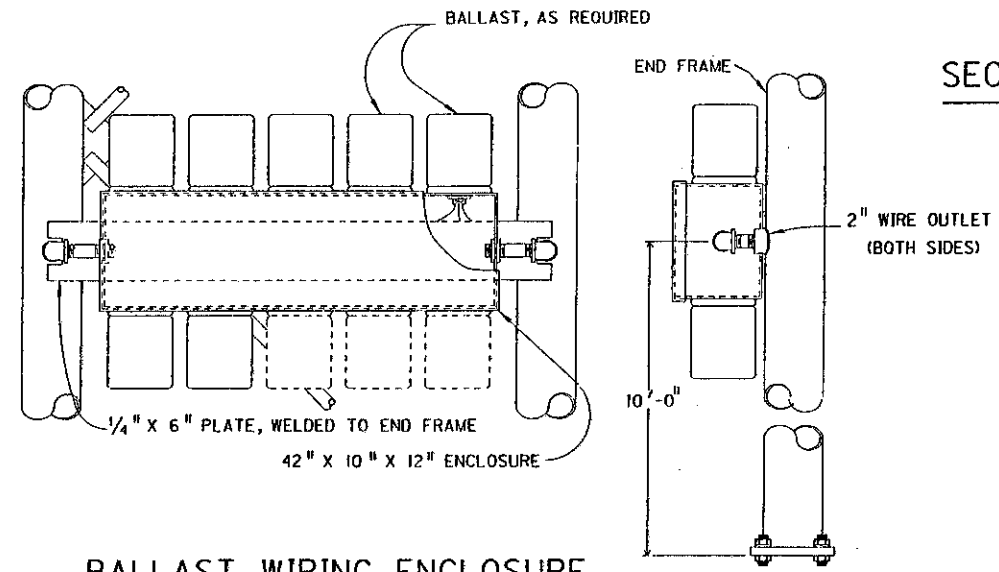
SECTION B-B



SWITCH ENCLOSURE

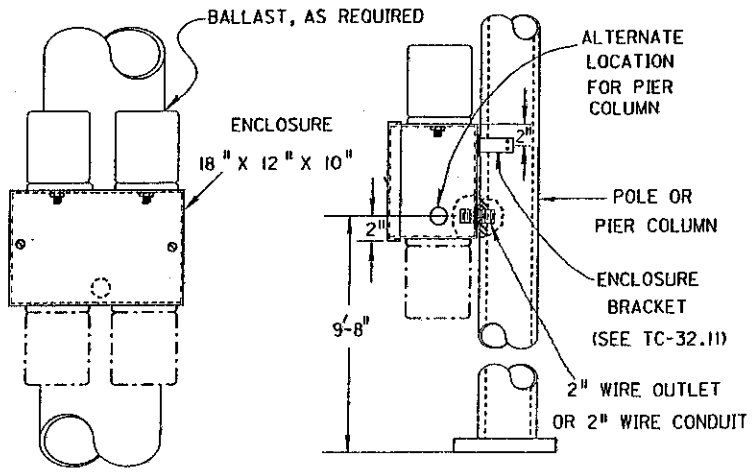
NOTES

1. ELECTRICAL SERVICE FOR OVERHEAD SIGN SUPPORTS SHALL, WHENEVER POSSIBLE, BE PROVIDED FROM A ROADWAY LIGHTING PULLBOX.
2. 3" CONDUIT SHALL BE USED TO PROVIDE CROSSOVER ACCESS BETWEEN SIGN SUPPORT AND LIGHTING CIRCUITS.
3. GROUND ONLY THE TRANSFORMER SECONDARY SIDE WITH UNGROUNDED SERVICE.
4. THE CIRCUIT WIRE FROM PULLBOX TO DISCONNECT SWITCH SHALL BE THE SAME AS THE LIGHTING CIRCUIT WIRE.



BALLAST WIRING ENCLOSURE

TYPE A

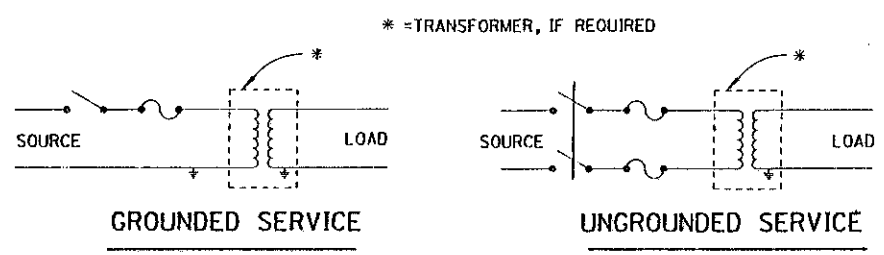


BALLAST WIRING ENCLOSURE

TYPE B

NOMINAL DIMENSIONS

TYPE	A	B	DEPTH
X	16"	9"	6 5/8"



ENCLOSURE WIRING

BUREAU OF DESIGN SERVICES DIVISION OF HIGHWAYS OHIO DEPARTMENT OF TRANSPORTATION	
TRAFFIC CONTROL	DATE 08/27/76 03/08/79 09/01/92
SIGN SERVICE DETAILS I	
STANDARD CONSTRUCTION DRAWING	TC-32.10
APPROVED <i>Ray Cooper</i> ENGR. OF DESIGN SERVICES	