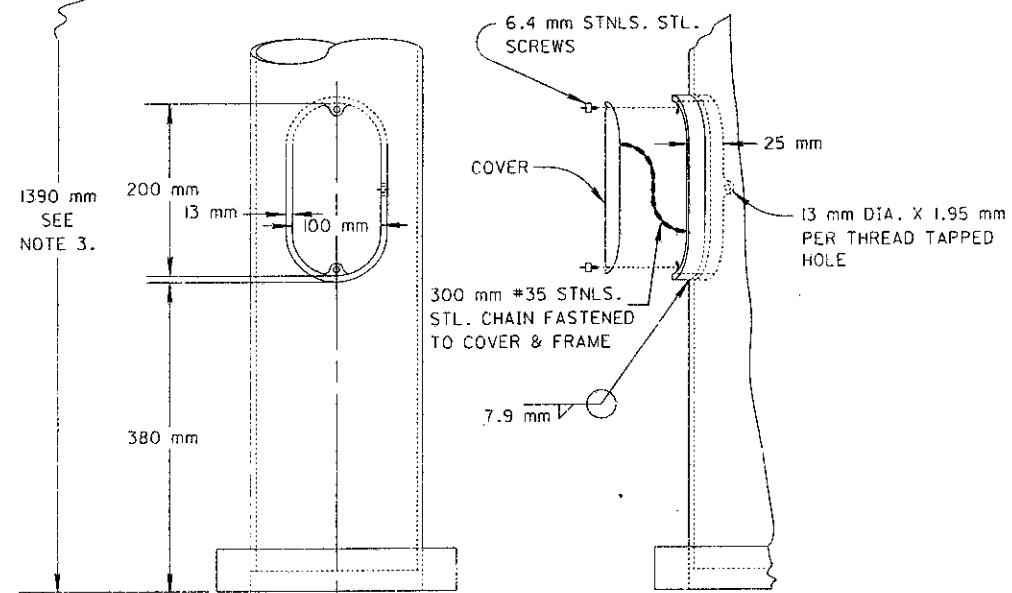
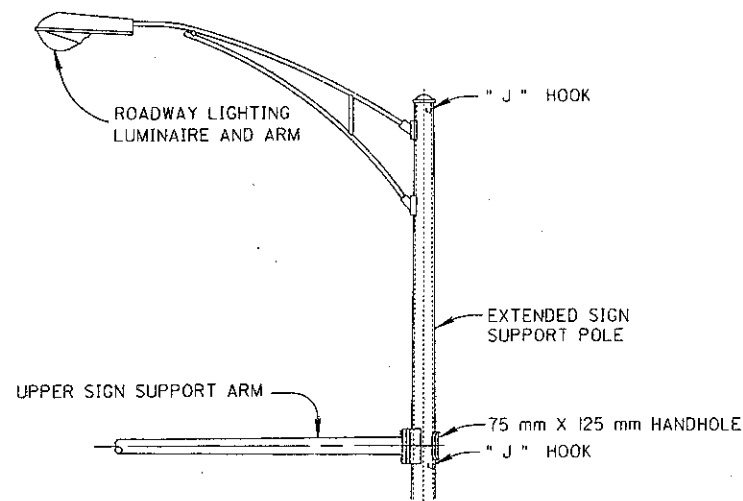


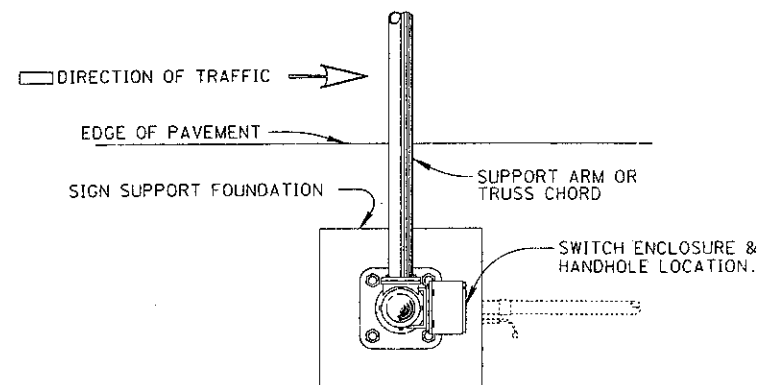
SWITCH ENCLOSURE BRACKET



100 mm X 200 mm HANDHOLE



POLE EXTENSION  
FOR  
LIGHTING LUMINAIRE



SWITCH ENCLOSURE & HANDHOLE  
ORIENTATION

NOTES

1. U-BOLTS, NUTS AND WASHERS SHALL BE STAINLESS STEEL FOR USE WITH ALUMINUM TRUSS CHORDS. WHEN USED WITH GALVANIZED CHORDS, THE U-BOLT ONLY MAY BE GALVANIZED STEEL.
2. CONTACT BETWEEN ALUMINUM AND GALVANIZED PARTS SHALL BE PREVENTED WITH A MINIMUM 1.6 mm THICK CHLOROPHENE GASKET OR APPROVED EQUAL. NO GASKET IS REQUIRED BETWEEN STAINLESS STEEL AND ALUMINUM.
3. WHEN ANY SIDEWALK IS WITHIN 1.5 METERS OF THE POLE BASE, THE 1390 mm DIMENSION SHALL BE INCREASED TO 2030 mm.

M E T R I C

BUREAU OF DESIGN SERVICES  
DIVISION OF HIGHWAYS  
OHIO DEPARTMENT OF TRANSPORTATION

TRAFFIC CONTROL

DATE  
02/01/94

MISCELLANEOUS  
OVERHEAD SIGN SUPPORT  
DETAILS

STANDARD  
CONSTRUCTION  
DRAWING

TC-22.10M

APPROVED *Don Cooper* ENGR. OF DESIGN SERVICES