

PLOTTED BY: jgrmovse
 PLOTTED FROM: \\PROJECTS\B\p\098666\098666.dgn
 098666GRC.DGN
 PLOT SUBMITTED: 10-FEB-1999 13:50

ITEM 606 - IMPACT ATTENUATOR, TYPE 1-98 (BIDIRECTIONAL)

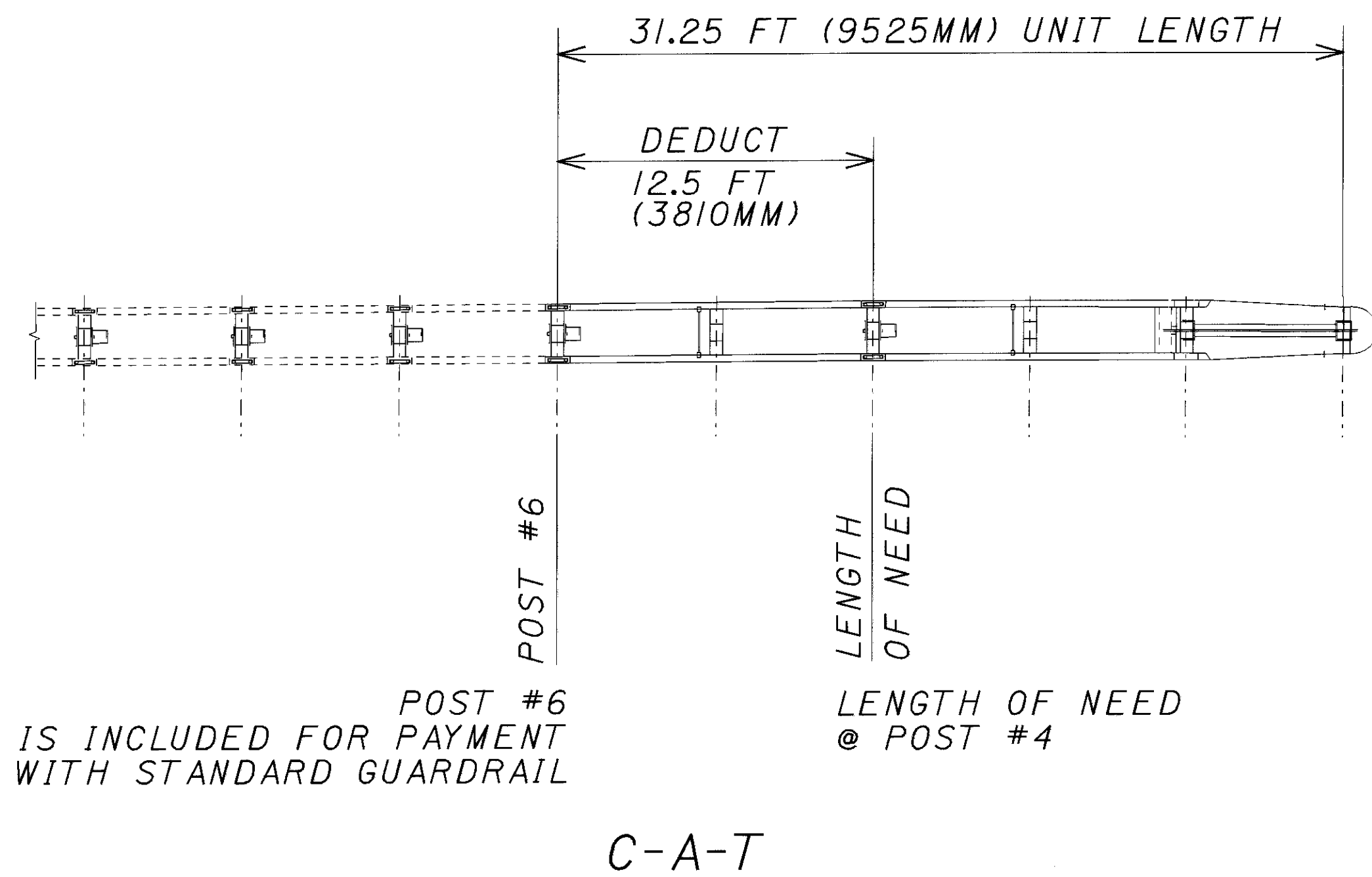
THIS ITEM SHALL CONSIST OF FURNISHING AND INSTALLING EITHER OF THE FOLLOWING IMPACT ATTENUATORS:

1) THE C-A-T MANUFACTURED BY SYRO, INC., 1170 N. STATE STREET, GIRARD, OHIO 44420 (TELEPHONE: 330.545-4373). THE LENGTH OF THE C-A-T SYSTEM IS CONSIDERED TO BE 31.25 FT. LONG. INSTALLATION SHALL BE AT THE LOCATIONS SPECIFIED IN THE PLANS, IN ACCORDANCE WITH THE MANUFACTURER'S SPECIFICATIONS AS DETAILED ON THE FOLLOWING PRE-APPROVED SHOP DRAWINGS:

DWG. #	DRAWING NAME	DWG./REV. DATE	ODOT APPROVAL
SS245M	CRASH-CUSHION ATTENUATING TERMINAL PLAN, ELEVATION & SECTIONS. FOR USE AS A LONGITUDINAL MEDIAN BARRIER TERMINAL OR CRASH CUSHION ATTENUATOR	4-10-97	3-6-98
SS224M	C-A-T TRANSITION TO MEDIAN BARRIER GUARDRAIL PLAN, ELEVATION & SECTIONS.	4-26-96	3-6-98
SS226M	C-A-T TRANSITION TO VERTICAL WALL OR PIER PLAN, ELEVATION & SECTIONS.	4-26-96	3-6-98

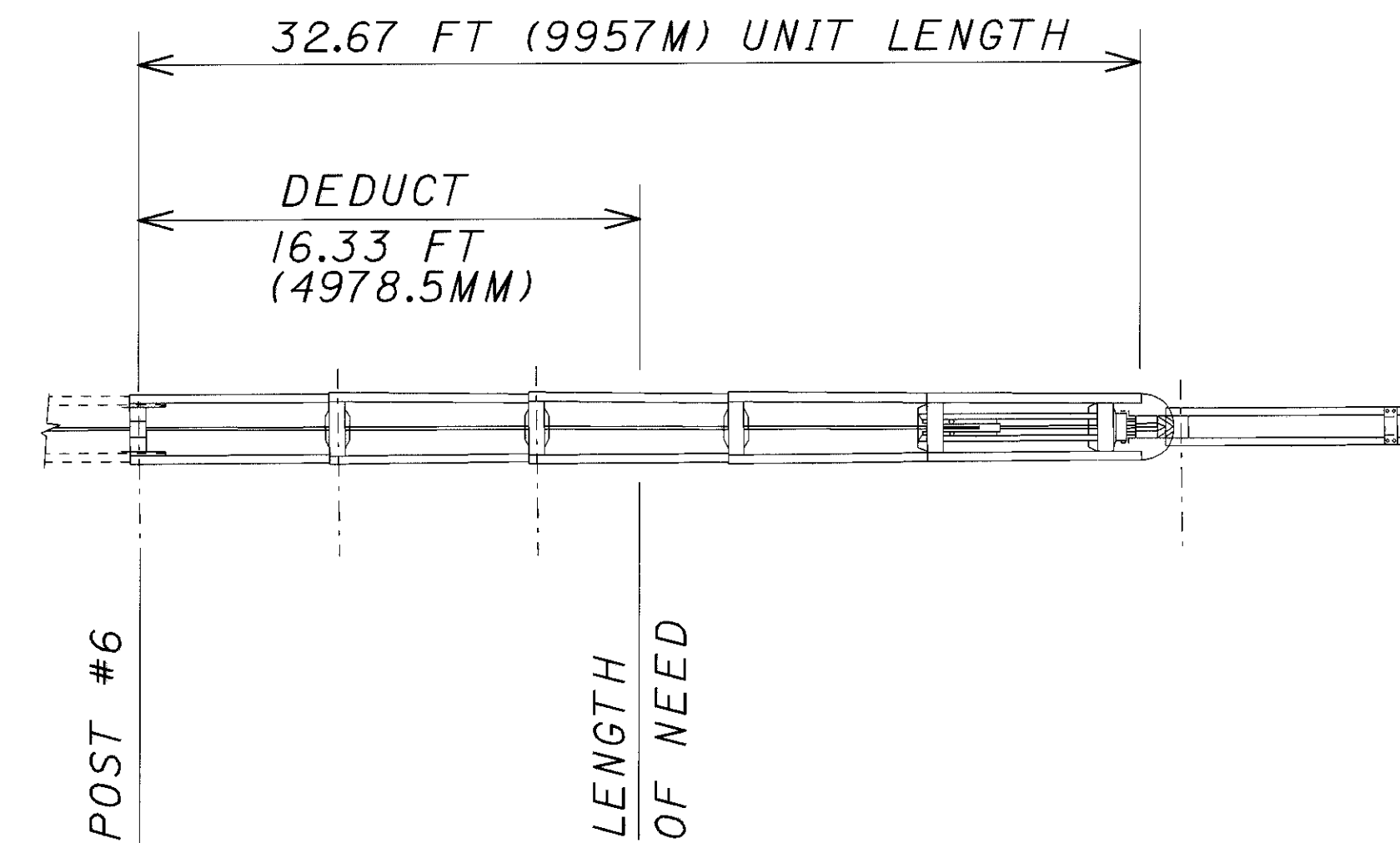
2) THE BREAKMASTER MANUFACTURED BY ENERGY ABSORPTION SYSTEMS, INC., ONE EAST WACKER DRIVE, CHICAGO, IL 60601 (TELEPHONE: 312.467-6750). THE LENGTH OF THE BREAKMASTER IS CONSIDERED TO BE 32'-8" LONG. INSTALLATION SHALL BE AT THE LOCATIONS SPECIFIED IN THE PLANS, IN ACCORDANCE WITH THE MANUFACTURER'S SPECIFICATIONS AS DETAILED ON THE FOLLOWING PRE-APPROVED SHOP DRAWINGS:

DWG. #	DRAWING NAME	DWG./REV. DATE	ODOT APPROVAL
92-00-01	BREAKMASTER GENERAL ASSEMBLY (UNIDIRECTIONAL SYSTEM)	3-6-97	3-6-98
92-00-81	BREAKMASTER (UNIDIRECTIONAL) WITH FOUNDATION TUBES	2-9-98	3-6-98
92-00-02	BREAKMASTER GENERAL ASSEMBLY (BIDIRECTIONAL SYSTEM)	3-10-97	3-6-98
92-00-82	BREAKMASTER (BIDIRECTIONAL) WITH FOUNDATION TUBES	2-9-98	3-6-98
9202024-0000	ANCHOR ASSEMBLY, FOUNDATION TUBE, 6 1/2 FT., BRS	6-12-97	3-6-98



POST #6 IS INCLUDED FOR PAYMENT WITH STANDARD GUARDRAIL

LENGTH OF NEED @ POST #4



POST #6 IS INCLUDED FOR PAYMENT WITH STANDARD GUARDRAIL

LENGTH OF NEED @ MIDPOINT