

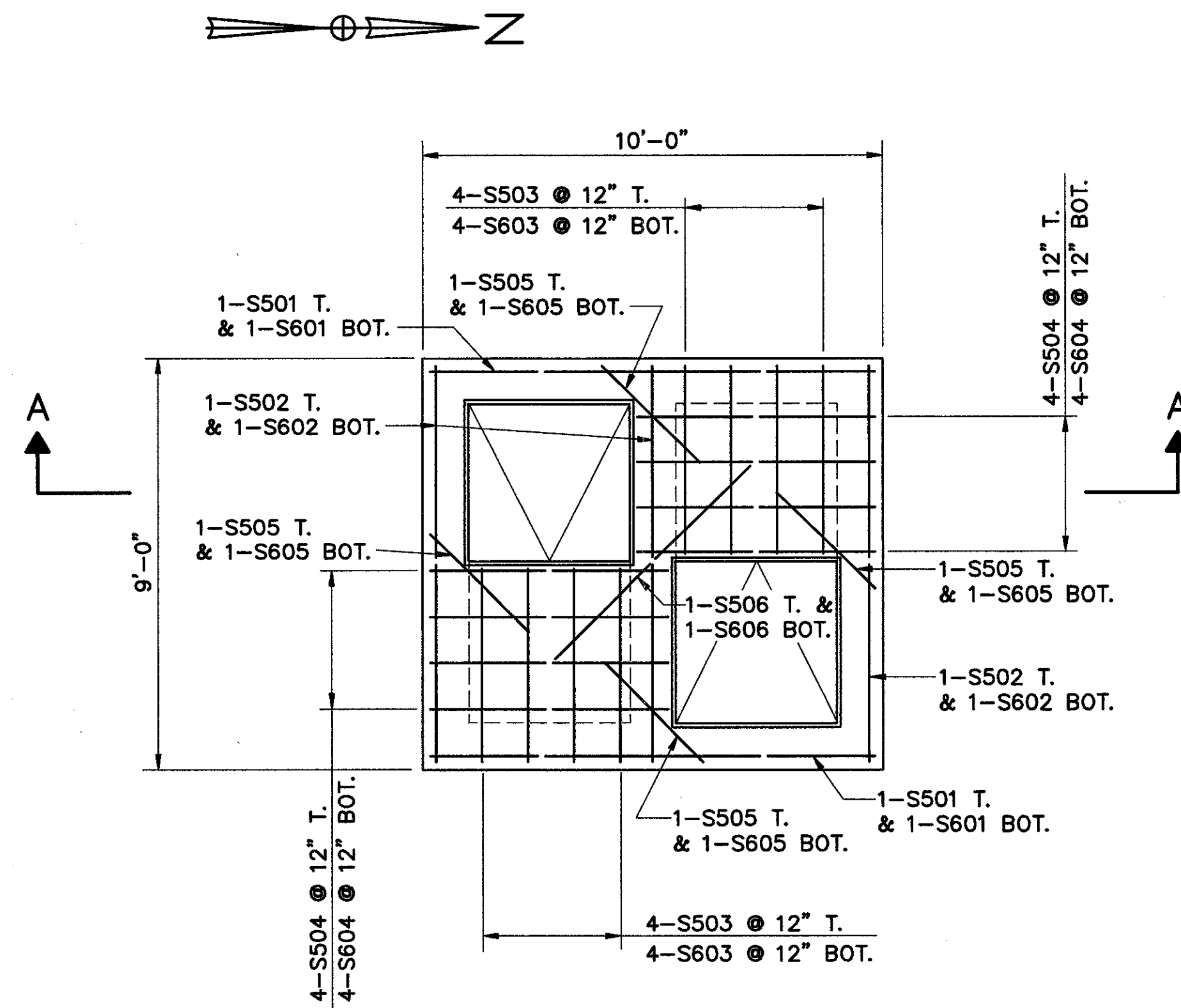
SANITARY SEWER DETAILS

CALC. BY RLB
DATE 3-90
CHKD. BY RC
DATE 3-90

LAK - 306 - 7.12

OHIO
FHWA 5
REGION

331
452



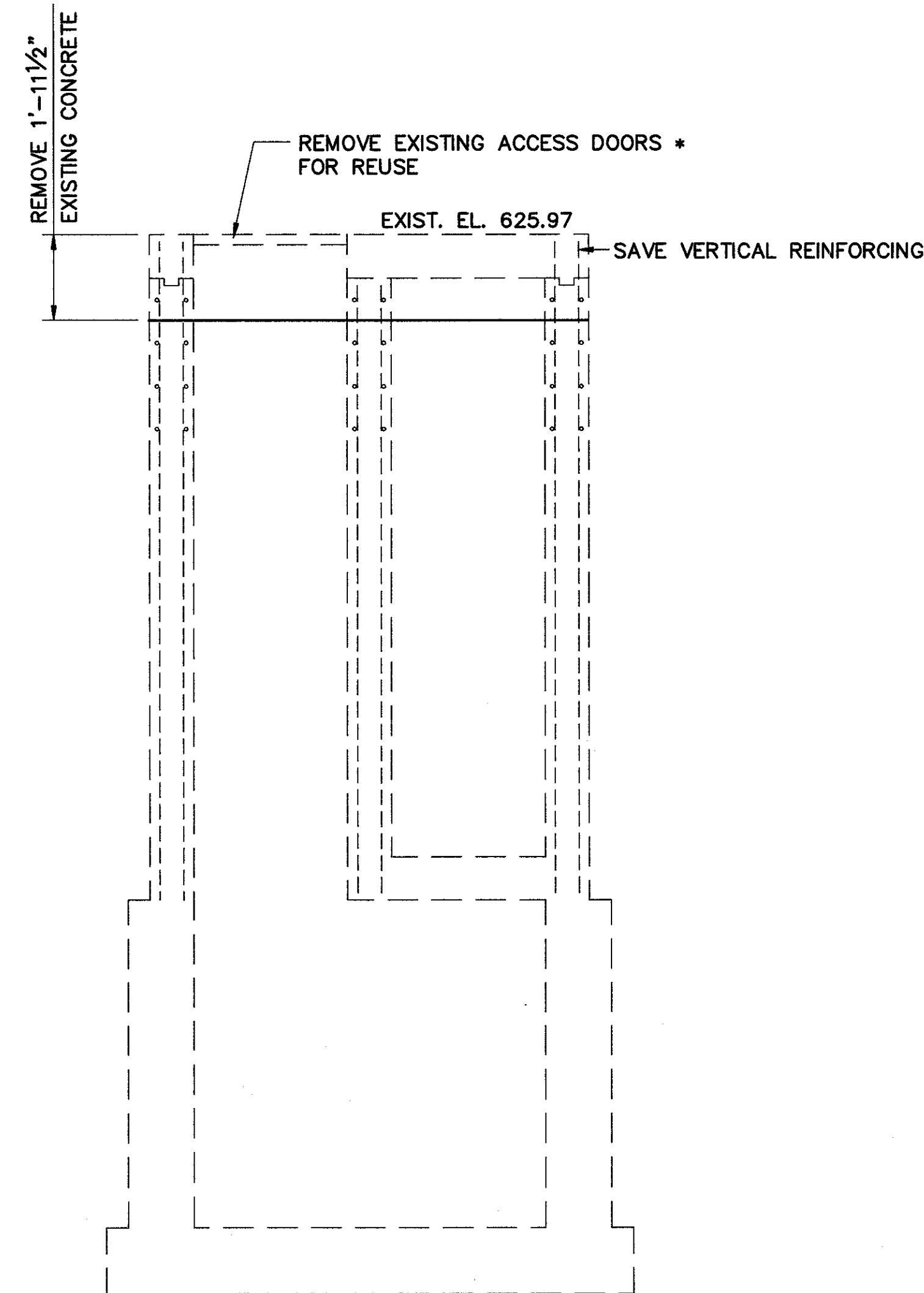
PLAN VIEW

JUNCTION CHAMBER, SANITARY,
RECONSTRUCTED TO GRADE, AS PER PLAN
STA. 62+35, 33' RT.

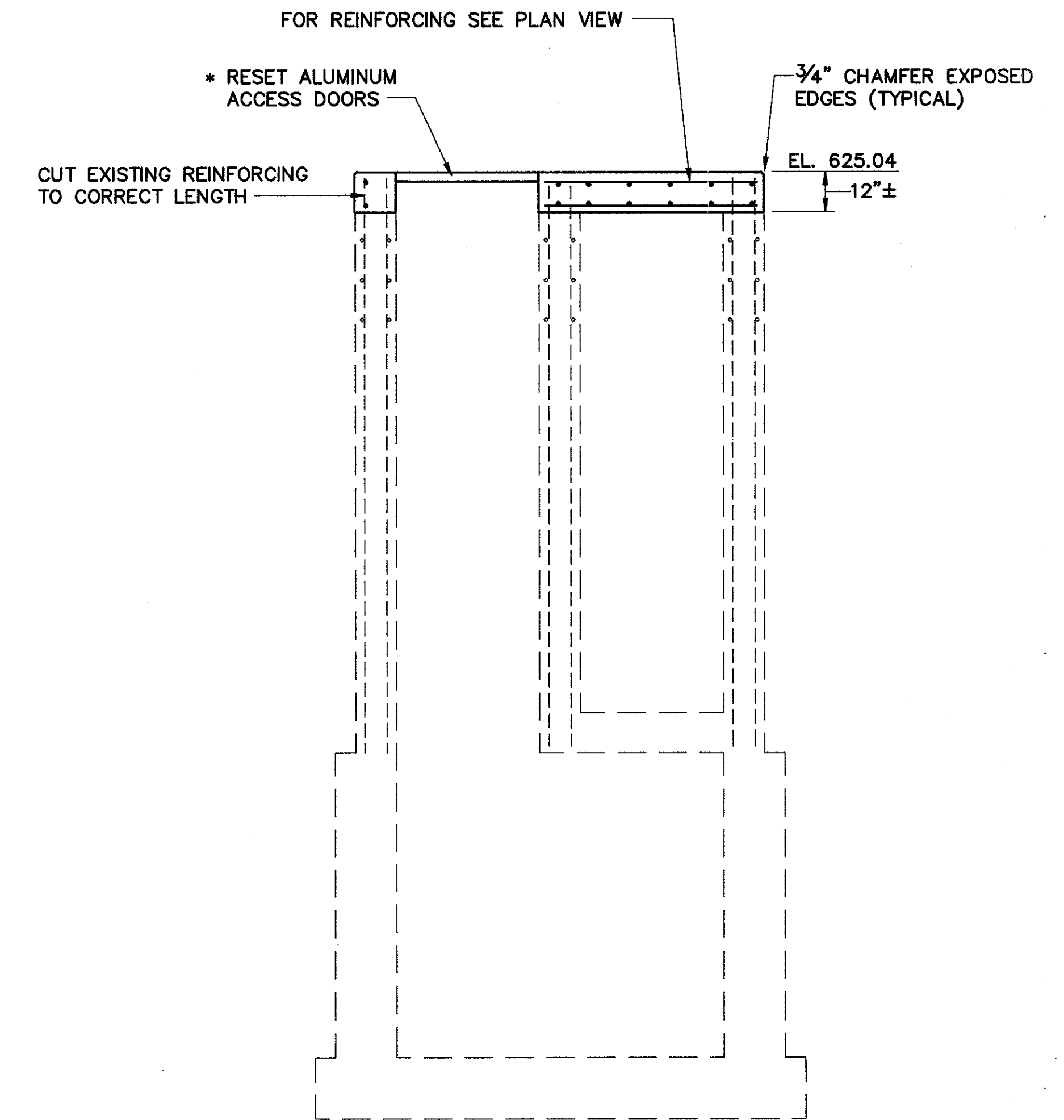
REINFORCING STEEL SCHEDULE				
MARK	NUMBER REQUIRED	LENGTH	TYPE	WEIGHT (LBS.)
S501	2	9'-8"	STR	20
S502	3	8'-8"	STR	27
S503	8	4'-2"	STR	35
S504	8	5'-2"	STR	43
S505	4	3'-0"	STR	13
S506	1	6'-0"	STR	6
S601	2	9'-8"	STR	29
S602	3	8'-8"	STR	39
S603	8	4'-2"	STR	50
S604	8	5'-2"	STR	62
S605	4	3'-0"	STR	18
S606	1	6'-0"	STR	9
TOTAL = 351 LBS.				

ESTIMATED QUANTITY OF CONCRETE IS 3 CU. YDS.
CONCRETE SHALL CONFORM TO ITEM 511

REINFORCING SHALL CONFORM TO ITEM 509



SECTION A-A
EXISTING DEMOLITION



SECTION A-A
PROPOSED RECONSTRUCTION

* NOTE: EXISTING ALUMINUM ACCESS DOORS FOR REUSE THAT ARE DAMAGED BY THE CONTRACTOR SHALL BE REPLACED AT HIS OWN EXPENSE. NEW ACCESS DOORS SHALL BE AS PER THE SPECIFICATIONS OF THE LAKE COUNTY SANITARY ENGINEERS OFFICE AND SHALL BE APPROVED FOR USE PRIOR TO PLACING ON RECONSTRUCTED JUNCTION CHAMBER.