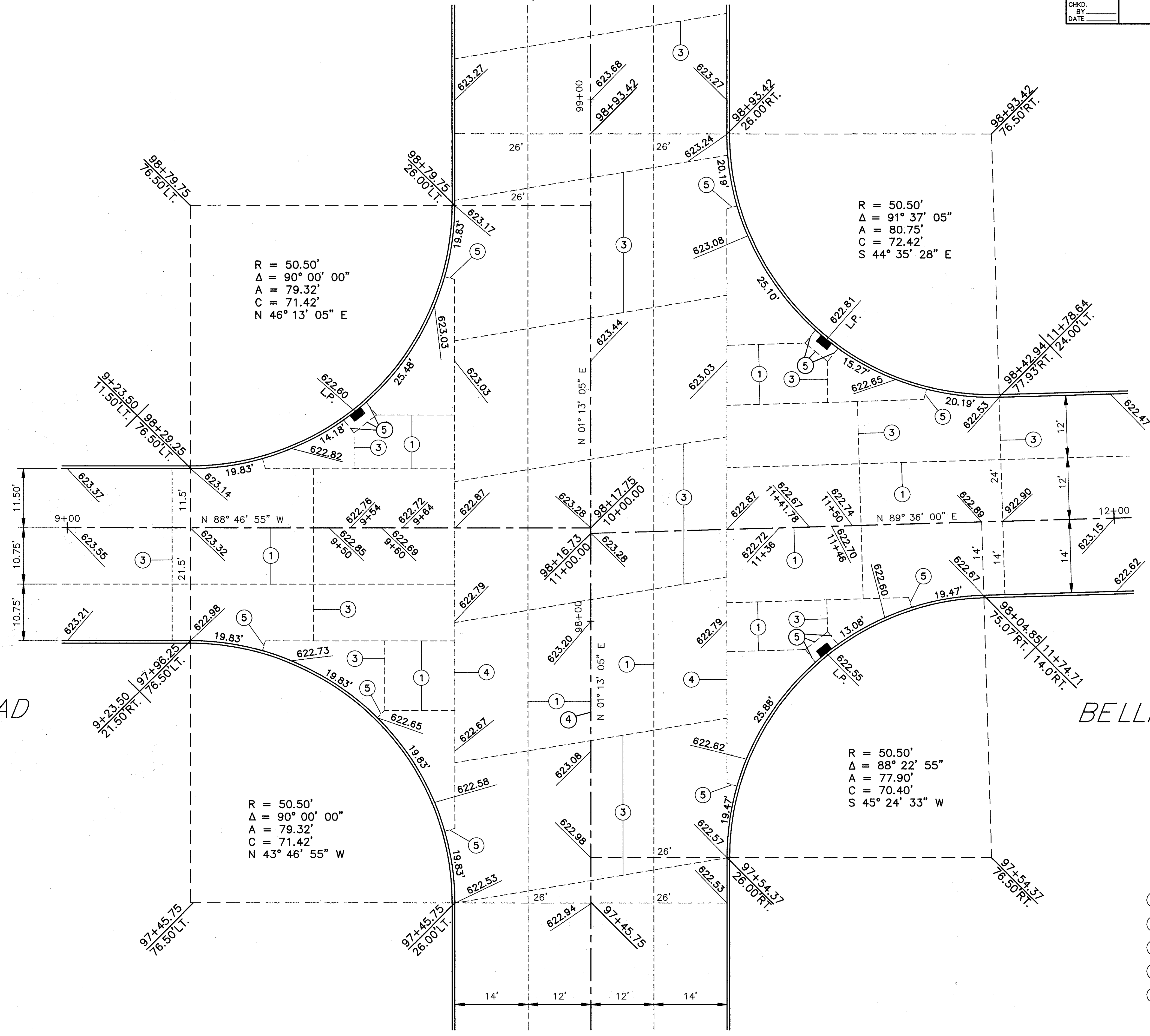


BELLFLOWER ROAD

BELLFLOWER ROAD

STATE ROUTE 306



R = 50.50'
 Δ = 90° 00' 00"
 A = 79.32'
 C = 71.42'
 N 46° 13' 05" E

R = 50.50'
 Δ = 91° 37' 05"
 A = 80.75'
 C = 72.42'
 S 44° 35' 28" E

R = 50.50'
 Δ = 90° 00' 00"
 A = 79.32'
 C = 71.42'
 N 43° 46' 55" W

R = 50.50'
 Δ = 88° 22' 55"
 A = 77.90'
 C = 70.40'
 S 45° 24' 33" W

LEGEND

- ① STANDARD LONGITUDINAL JOINT
- ② STANDARD EXPANSION JOINT
- ③ STANDARD CONTRACTION JOINT
- ④ LONGITUDINAL JOINT WITHOUT TIEBARS
- ⑤ EXPANSION JOINT WITHOUT DOWELS