

HSE #7341

LAK - 306 - 7.12

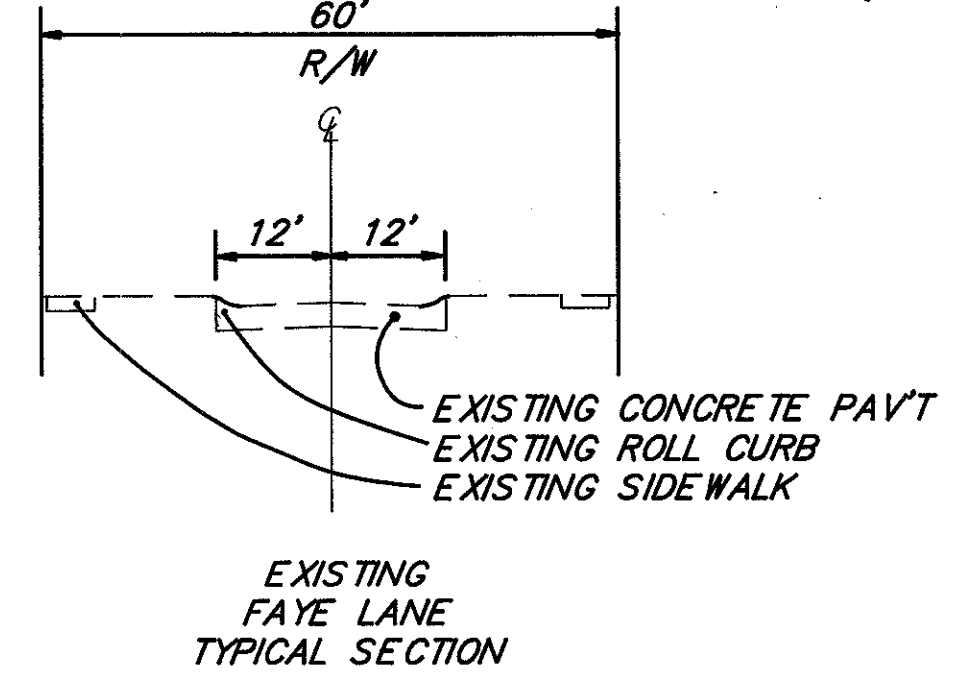
OHIO

140

FHWA REGION 5

452

CALC. BY L.M.E.
DATE 3-90
CHKD. BY D.J.W.
DATE 4-90

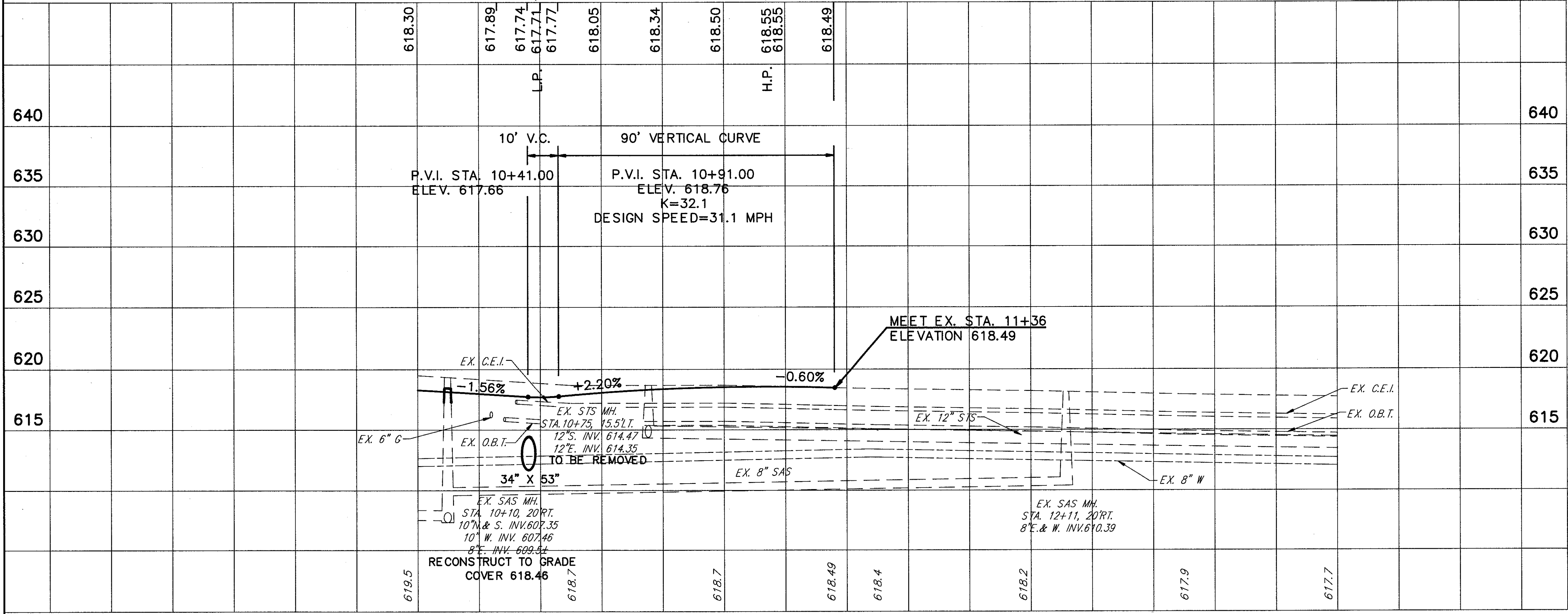
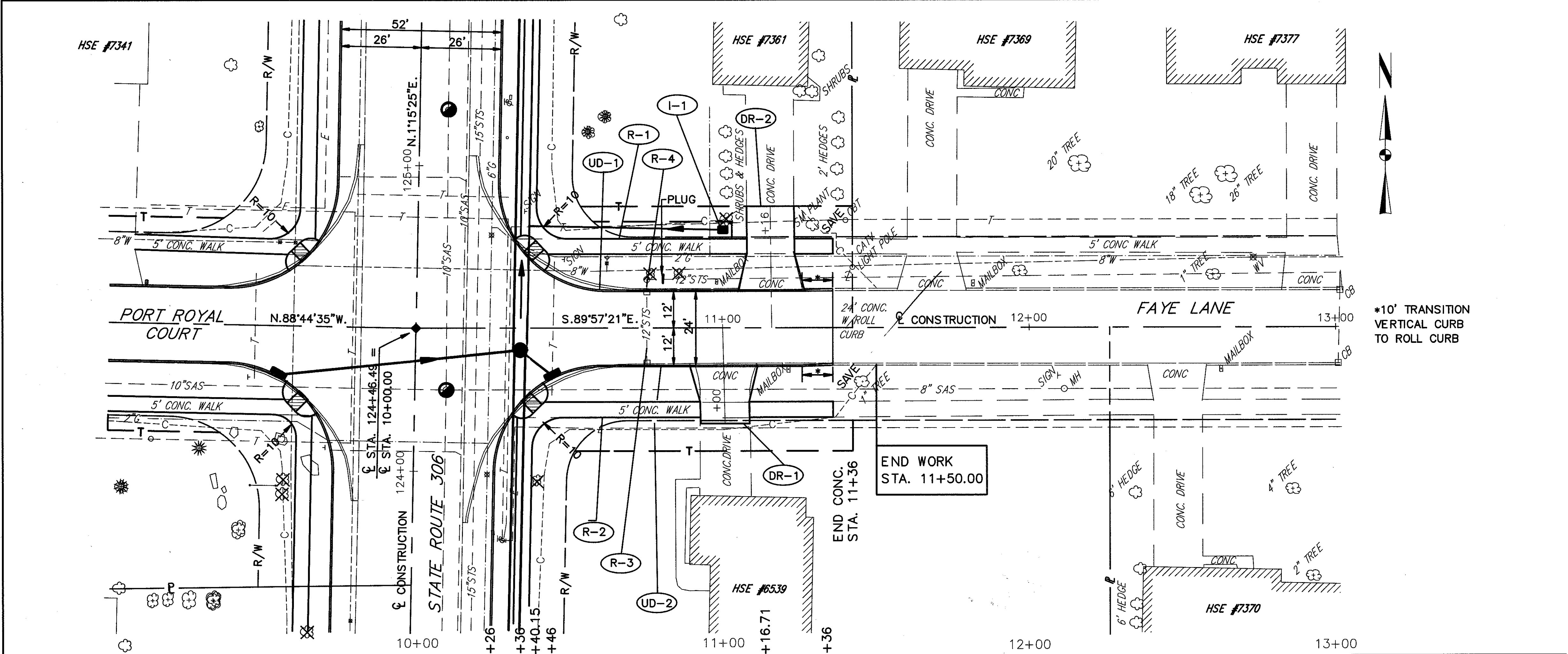


*10' TRANSITION VERTICAL CURB TO ROLL CURB

FOR TYPICAL SECTIONS SEE SHEET 8
FOR CROSS SECTIONS SEE SHEET 248
FOR MAINLINE PLAN & PROFILE SEE SHEET 113
FOR INTERSECTION DETAILS SEE SHEET 311
FOR SIGNING PLAN SEE SHEET 363-365
FOR PAVEMENT MARKING DETAILS SEE SHEET 352-353
FOR UNDERDRAIN QUANTITIES SEE SHEET 52-55
FOR DRIVEWAY PROFILES SEE SHEET 298
FOR DRIVEWAY DETAILS SEE SHEET 333-334
FOR I-1 INLET QUANTITIES SEE SHEET 82

	202	202	202	202
WALK REMOVED				
CATCH BASIN REMOVED				
PIPE REMOVED (24" AND UNDER)				
MANHOLE REMOVED				
TOTALS	851	2	30	1

ROADWAY		S.F.	EACH	LN.FT.	EACH
REF.	LOCATION				
R-1	STA. 10+31.00 TO STA. 11+36.00, LT.	423			
R-2	STA. 10+31.00 TO STA. 11+36.00, RT.	428			
R-3	STA. 10+75.00, 12.00' RT. TO 12.00' LT.		1	25	
R-4	STA. 10+75.00, 12.00' LT. TO 15.00' LT.		1	5	1
TOTALS		851	2	30	1



FAYE LANE STA. 10+00 TO STA. 13+00

LAK - 306 - 7.12