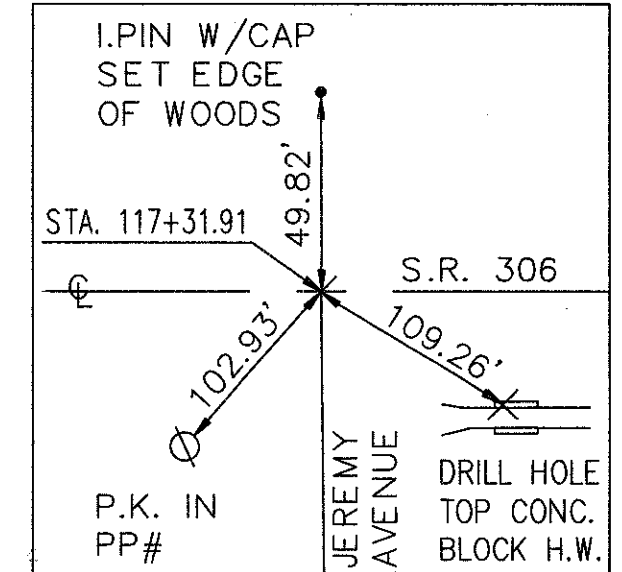


BENCHMARK: TOP OF HYDRANT
W SIDE OF 306 OPPOSITE OF
JEREMY AVE. ELEV. 623.29

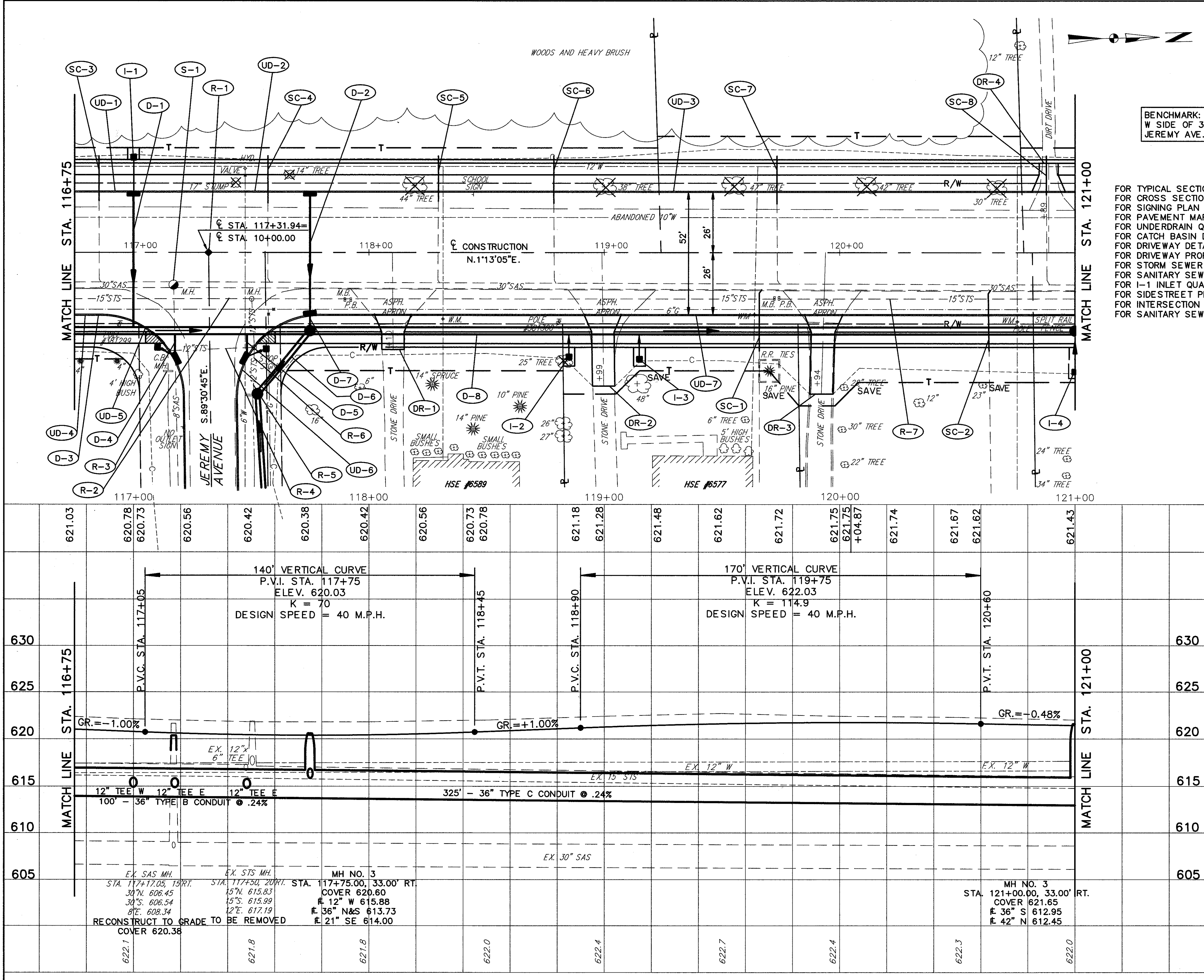


FOR TYPICAL SECTIONS SEE SHEET 6
FOR CROSS SECTIONS SEE SHEET 199-202
FOR SIGNING PLAN SEE SHEET 363-365
FOR PAVEMENT MARKING DETAILS SEE SHEET 352-353
FOR UNDERDRAIN QUANTITIES SEE SHEET 52-55
FOR CATCH BASIN DETAILS SEE SHEET 323
FOR DRIVEWAY DETAILS SEE SHEET 333-334
FOR DRIVEWAY PROFILES SEE SHEET 285-286
FOR STORM SEWER CONNECTION SCHEDULE SEE SHEET 68-70
FOR SANITARY SEWER CONNECTION SCHEDULE SEE SHEET 71-73
FOR I-1 INLET QUANTITIES SEE SHEET 82
FOR SIDESTREET PLAN & PROFILE SEE SHEET 138
FOR INTERSECTION DETAILS SEE SHEET 311
FOR SANITARY SEWER DETAILS SEE SHEET 71-73

ROADWAY		MONUMENT ASSEMBLIES			
REF.	LOCATION	EACH	LF.	EACH	EACH
R-1	STA. 117+31.94 C	1			
R-2	STA. 116+75.00 TO STA. 117+50.00, 20' RT		75		1
R-3	STA. 117+14.00, 41' RT. TO 50' RT.		9	1	
R-4	STA. 117+14.00 TO 117+50.00, 41' RT.		36		
R-5	STA. 117+50.00, 40' RT. TO 60' RT.		20	1	
R-6	STA. 117+50.00, 20' RT. TO 40' RT.		20		
R-7	STA. 117+50.00 TO STA. 121+00.00, 20' RT		350		
TOTALS		1	510	2	1

REF.	LOCATION	LF.	EACH	EA	EACH	EACH
604	TEE 36" X 12" X 36"				3	3
604	MANHOLE RECONSTRUCTED TO GRADE, AS PER PLAN			1		1
604	CATCH BASIN NO. 3A AS PER PLAN			1		3
604	CATCH BASIN NO. 3 AS PER PLAN			1		2
604	MANHOLE NO. 3			1		2
603	36" CONDUIT, TYPE C 706.02 WITH JOINTS AS PER 706.11		325		325	
603	36" CONDUIT, TYPE B 706.02 WITH JOINTS AS PER 706.11		100		100	
603	21" CONDUIT, TYPE C 706.02 WITH JOINTS AS PER 706.11		33		33	
603	12" CONDUIT, TYPE C 706.02 WITH JOINTS AS PER 706.11		7		7	
603	12" CONDUIT, TYPE B 706.02 WITH JOINTS AS PER 706.11		59		59	
TOTALS					135	

REF.	LOCATION	LF.	EACH	EA	EACH	EACH
D-1	STA. 117+00.00, 26.00' LT. TO STA. 117+00.00, 33.00' RT.		59		59	
D-2	STA. 117+75.00, 26.00' LT. TO STA. 117+00.00, 26.00' RT.		52		52	
D-3	STA. 116+75.00, 33.00' RT. TO STA. 117+75.00, 33.00' RT.		12		12	
D-4	STA. 117+17.62, 33.00' RT. TO STA. 117+17.62, 45.00' RT.		12		12	
D-5	STA. 117+47.77, 33.00' RT. TO STA. 117+47.77, 45.00' RT.		12		12	
D-6	STA. 104+60.00, 20.00' LT. TO STA. 117+75.00, 33.00' RT.		12		12	
D-7	STA. 117+75.00, 26.00' RT. TO STA. 117+75.00, 33.00' RT.		7		7	
D-8	STA. 117+75.00, 33.00' RT. TO STA. 121+00.00, 33.00' RT.		135		135	
S-1	STA. 117+17.05, 15.00' RT.					
TOTALS						



PLAN & PROFILE STA. 116+75 TO STA 121+00