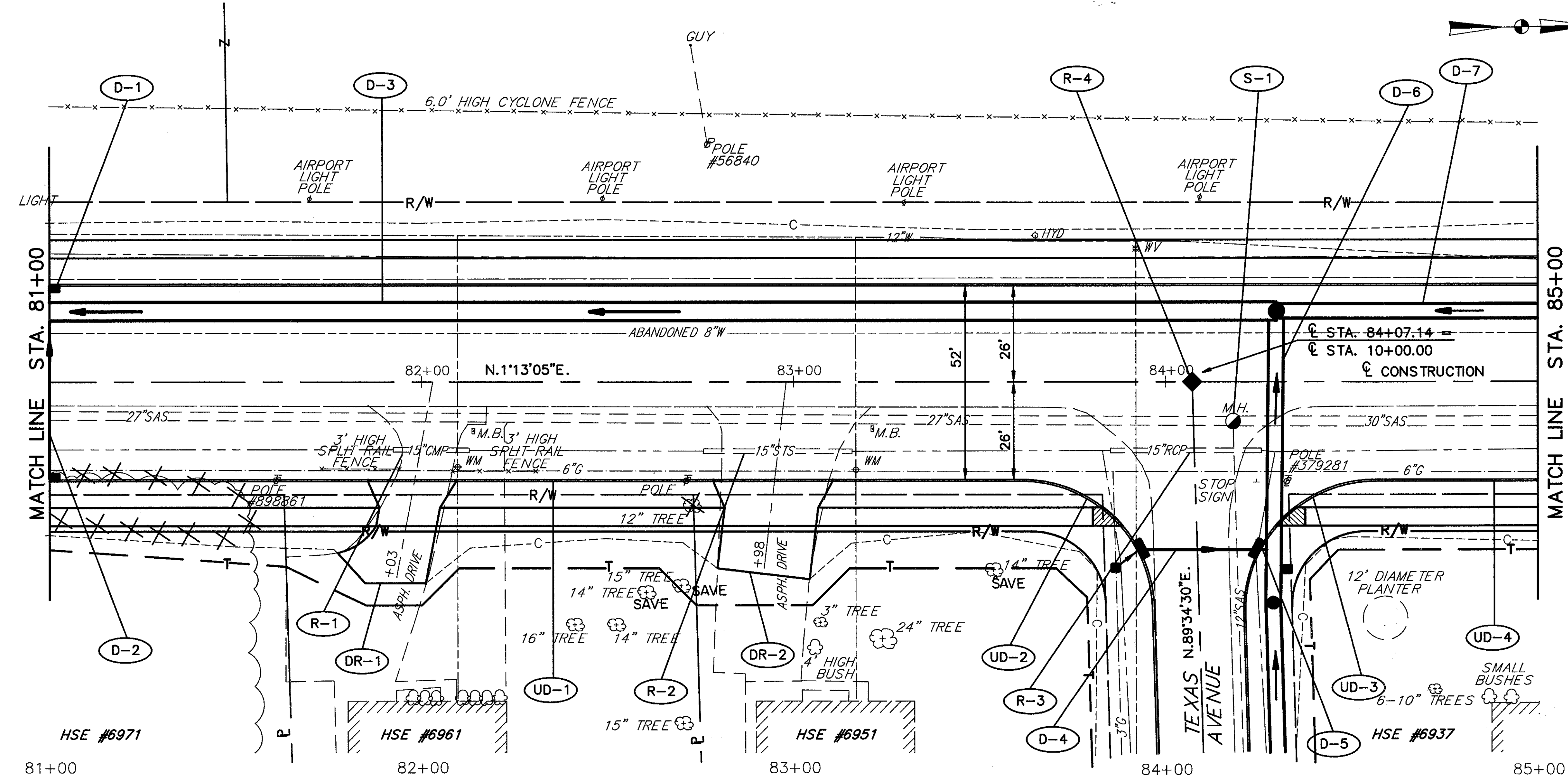


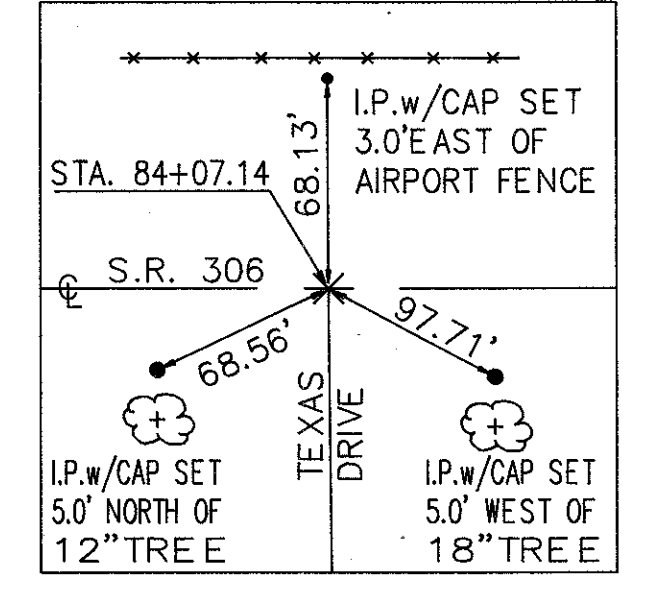
CALC. BY LME
DATE 4/90
CHKD. BY DJW
DATE 4/90

LAK 306 - 7.12

OHIO
FHWA REGION 5
103
452



BENCHMARK: TOP OF HYDRANT
W SIDE 306 OPPOSITE TEXAS
AVE. ELEV. 625.44



FOR TYPICAL SECTIONS SEE SHEET 6
FOR CROSS SECTIONS SEE SHEET 179-181
FOR SIGNING PLAN SEE SHEET 363-365
FOR PAVEMENT MARKING DETAILS SEE SHEET 352-353
FOR UNDERDRAIN QUANTITIES SEE SHEET 52-55
FOR CATCH BASIN DETAILS SEE SHEET 323
FOR DRIVEWAY DETAILS SEE SHEET 333-334
FOR DRIVEWAY PROFILES SEE SHEET 278
FOR STORM SEWER CONNECTION SCHEDULE SEE SHEET 68-70
FOR SIDESTREET PLAN & PROFILE SEE SHEET 133
FOR INTERSECTION DETAILS SEE SHEET 308
FOR SANITARY SEWER DETAILS SEE SHEET 329-331

ROADWAY				202	604
REF.	LOCATION	LF.	EACH	PIPE REMOVED (24" & UNDER)	MONUMENT ASSEMBLIES
R-1	STA. 81+92.00 TO STA. 82+13.00, 18' RT.	21			
R-2	STA. 82+76.00 TO STA. 83+15.00, 18' RT.	39			
R-3	STA. 83+85.00 TO STA. 84+26.00, 18' RT.	41			
R-4	STA. 84+07.14 C	1			
TOTALS				101	1

STA.	ELEV.	GR.	CONDUIT	MANHOLE	CATCH BASIN	VEGETATION	UTILITIES
81+00	621.36						
81+35	621.41						
82+00	621.45						
82+76	621.52						
83+00	621.76						
83+15	622.00						
83+24	622.24						
83+31	622.31						
83+36	622.36						
84+36	622.43						
84+46	622.46						
84+43	622.43						
84+36	622.36						
84+31	622.31						
84+24	622.24						
85+00	622.00						

REF.	LOCATION	LF.	EACH	MANHOLE	CATCH BASIN	VEGETATION	UTILITIES
604	TEE 60" X 12" X 60"		2				
604	TEE 48" X 12" X 48"		1				
604	MANHOLE RECONSTRUCTED TO GRADE, AS PER PLAN			1			
604	CATCH BASIN NO. 3A AS PER PLAN				2		
604	CATCH BASIN NO. 3 AS PER PLAN				2		
604	MANHOLE NO. 3			2			
603	60" CONDUIT, TYPE B 706.02	330					
603	48" CONDUIT, TYPE B 706.02	79					
603	12" CONDUIT, TYPE C 706.02	4					
603	12" CONDUIT, TYPE B 706.02	70					
TOTALS				85	4	149	330

REF.	LOCATION	LF.	EACH	MANHOLE	CATCH BASIN	VEGETATION	UTILITIES
D-1	STA. 81+00.00, 26.00' LT. TO STA. 81+00.00, 19.00' LT.	7					
D-2	STA. 81+00.00, 19.00' LT. TO STA. 81+00.00, 26.00' RT.	45					
D-3	STA. 81+00.00, 19.00' LT. TO STA. 84+30.00, 19.00' LT.	330					
D-4	STA. 81+92.00, 45.00' RT. TO STA. 84+26.00, 45.00' RT.	33					
D-5	STA. 84+26.00, 45.00' RT. TO STA. 84+30.00, 45.00' RT.	4					
D-6	STA. 84+30.00, 19.00' LT. TO STA. 84+30.00, 19.00' LT.	70					
D-7	STA. 84+30.00, 19.00' LT. TO STA. 85+00.00, 19.00' LT.	70					
S-1	STA. 84+18.00, 10.00' RT.						
TOTALS							

PLAN & PROFILE STA. 81+00 TO STA. 85+00

LAK - 306 - 7.12