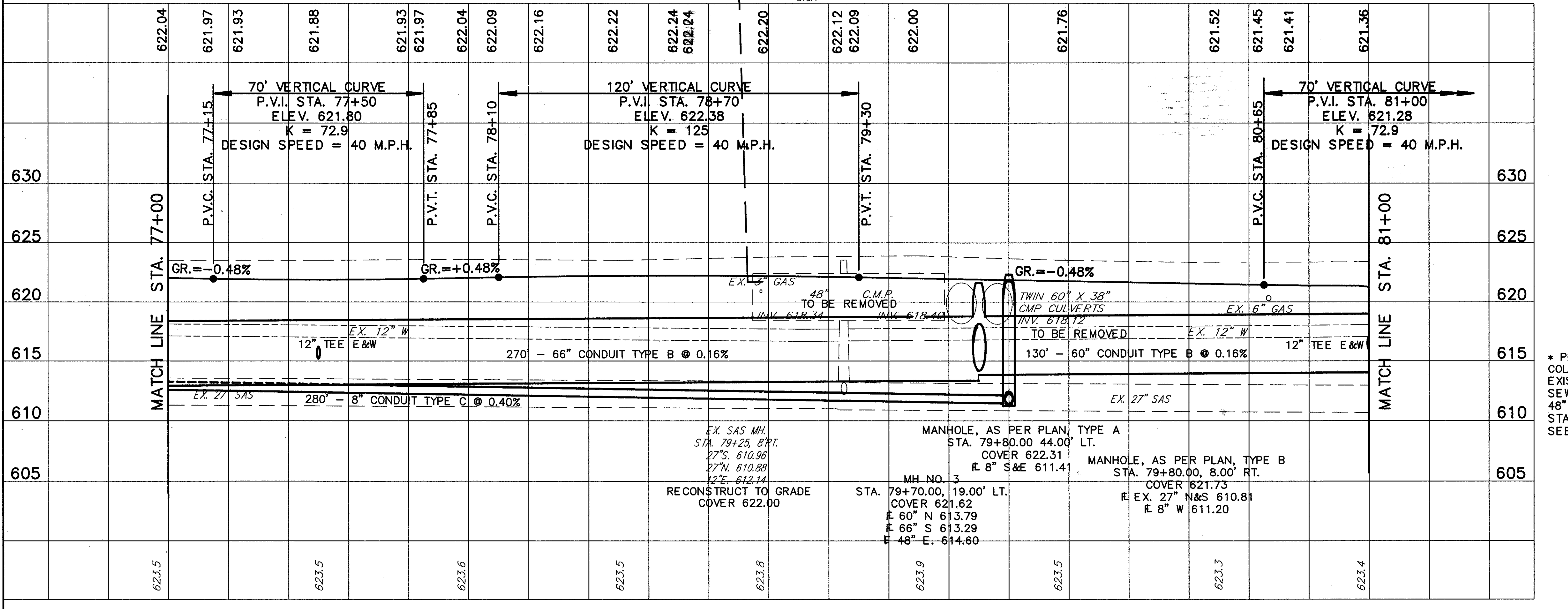


REF.	LOCATION	LF.	LF.	LUMP	LF.	EACH
R-1	STA. 77+07.00 TO STA. 77+28.00, 20' RT.		21			
R-2	STA. 77+87.00 TO STA. 78+08.00, 20' RT.		21			
R-3	STA. 78+95.00 TO STA. 79+59.00, 20' RT.		64	LUMP		
R-4	STA. 79+53.00 38' LT. TO 79+60.00, 15' RT.		53	LUMP		
R-5	STA. 79+61.00 38' LT. TO 79+67.00, 14' RT.		53	LUMP		
R-6	STA. 79+36.00 50' LT. TO 80+26.00, 30' LT.				103	
R-7	STA. 79+33.00 23' RT. TO 80+33.00, 12' RT.				104	
R-8	STA. 79+00.00 TO STA. 79+33.00, 42' RT.		33			
R-9	STA. 78+92.00 TO STA. 79+57.00, 38' LT.		65			
R-10	STA. 79+17.14 C					
TOTALS			98	212	LUMP	207



REF.	LOCATION	LF.	LF.	LUMP	LF.	EACH
604	TEE 66" X 12" X 66"					2
604	MANHOLE RECONSTRUCTED TO GRADE, AS PER PLAN					1
604	MANHOLE AS PER PLAN, TYPE B					1
604	MANHOLE AS PER PLAN, TYPE A					1
603	8" CONDUIT TYPE C AS PER PLAN 706.08 WITH JOINTS AS PER 706.12		280			280
603	8" CONDUIT TYPE B 706.08 WITH JOINTS AS PER 706.12		52			52
602	CONCRETE MASONRY		0.43			0.43
604	CATCH BASIN NO. 3A AS PER PLAN					2
604	CATCH BASIN NO. 3 AS PER PLAN					2
604	MANHOLE NO. 5					1
604	MANHOLE NO. 3					2
603	66" CONDUIT, TYPE B 706.02		270			270
603	60" CONDUIT, TYPE B 706.02		130			130
603	48" CONDUIT, TYPE C 706.02		39			39
603	48" CONDUIT, TYPE B 706.02		54			54
603	24" CONDUIT, TYPE C 706.02		44			44
603	12" CONDUIT, TYPE C 706.02		15			15
603	12" CONDUIT, TYPE B 706.02		85			85
TOTALS						

* PROVIDE CONCRETE COLLAR BETWEEN THE EXISTING 27" SANITARY SEWER AND PROPOSED 48" STORM SEWER AT STA. 79+70 RT. SEE DETAIL SHEET 330

REF.	LOCATION	LF.	LF.	LUMP	LF.	EACH
D-1	STA. 77+50.00, 26.00' LT. TO STA. 77+50.00, 19.00' LT.		7			7
D-2	STA. 77+50.00, 19.00' LT. TO STA. 77+50.00, 26.00' RT.		45			45
D-3	STA. 77+00.00, 19.00' LT. TO STA. 79+70.00, 19.00' LT.		33			33
D-4	STA. 79+70.00, 19.00' LT. TO STA. 81+00.00, 19.00' LT.		33			33
D-5	STA. 79+02.85, 45.00' RT. TO STA. 79+35.03, 45.00' RT.		15			15
D-6	STA. 79+35.03, 45.00' RT. TO STA. 10+60.00, 20.00' LT.		15			15
D-7	STA. 10+60.00, 20.00' LT. TO STA. 79+70.00, 35.00' RT.		15			15
D-8	STA. 79+70.00, 35.00' RT. TO STA. 79+70.00, 35.00' RT.		15			15
D-9	STA. 79+70.00, 35.00' RT. TO STA. 80+08.00, 57.00' RT.		15			15
S-1	STA. 77+00.00, 44.00' LT. TO STA. 79+80.00, 44.00' LT.					
S-2	STA. 79+80.00, 44.00' LT. TO STA. 79+80.00, 8.00' RT.					
S-3	STA. 79+80.00, 8.00' RT. TO STA. 79+25.00, 8.00' RT.					
S-4	STA. 79+25.00, 8.00' RT.					
TOTALS						

PLAN & PROFILE STA. 77+00 TO STA. 81+00