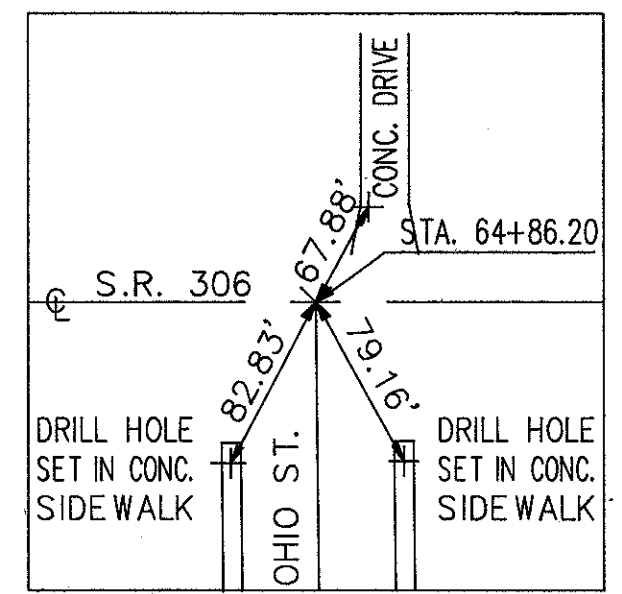


BENCHMARK: TOP OF HYDRANT
OPPOSITE OHIO ST.
ELEV. 628.70

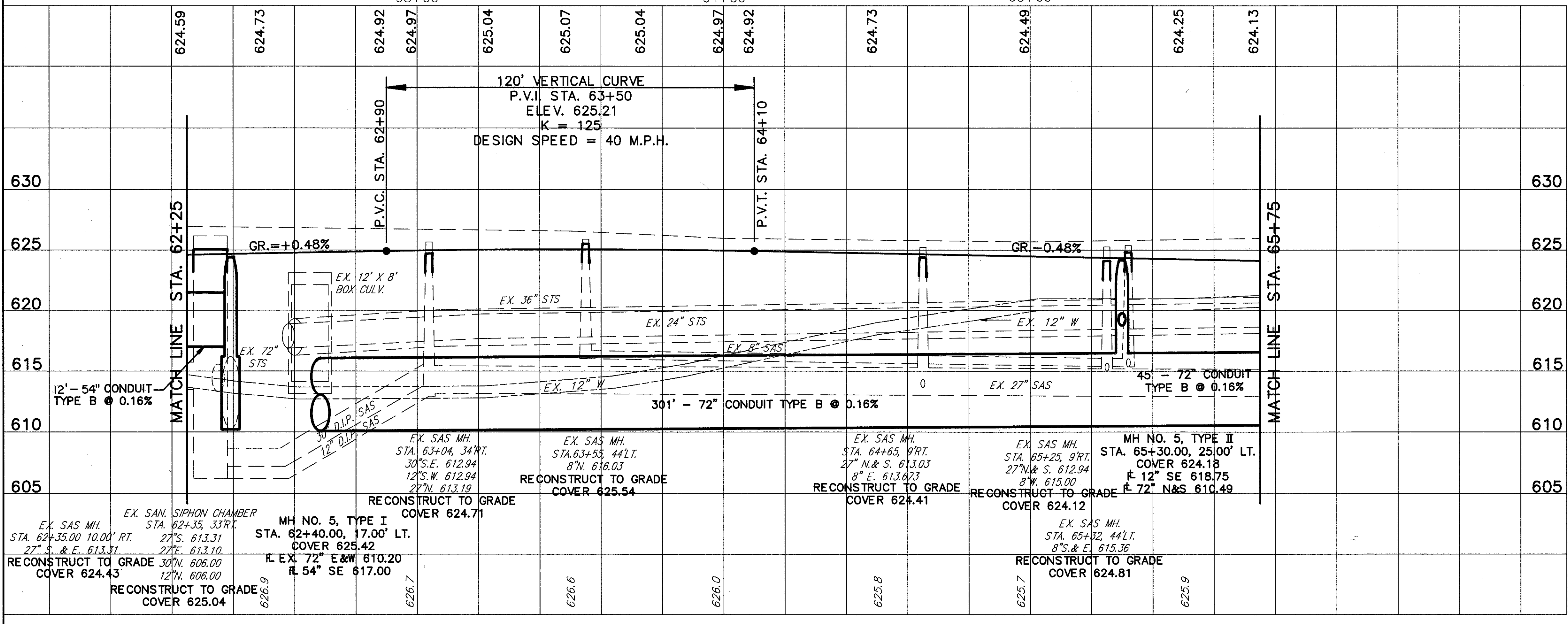
FOR TYPICAL SECTIONS SEE SHEET 5-6
FOR CROSS SECTIONS SEE SHEET 168-171
FOR SIGNING PLAN SEE SHEET 363-365
FOR PAVEMENT MARKING DETAILS SEE SHEET 352-353
FOR UNDERDRAIN QUANTITIES SEE SHEET 52-55
FOR CATCH BASIN DETAILS SEE SHEET 323
FOR DRIVEWAY DETAILS SEE SHEET 333-334
FOR DRIVEWAY PROFILES SEE SHEET 274
FOR STORM SEWER CONNECTION SCHEDULE SEE SHEET 68-70
FOR SANITARY SEWER CONNECTION SCHEDULE SEE SHEET 71-73
FOR SIDEWALK PLAN & PROFILE SEE SHEET 130
FOR INTERSECTION DETAILS SEE SHEET 307
FOR SANITARY SEWER DETAILS SEE SHEET 329-331
FOR SIGNAL PLANS SEE SHEET 340
FOR MANHOLE DETAILS SEE SHEET 325
FOR OUTLET STRUCTURE DETAILS SEE SHEET 317-320



☉ CURVE DATA
FOR 72" Ø PIPE
R=50.00'
Δ=78° 31' 17"
A=68.52
C=63.28
N. 40° 13' 14" E.
P.C. STA. 62+74.14, 65.05' LT.
P.T. STA. 63+23.14, 25.00' LT.

ROADWAY			
REF.	LOCATION	EACH	LF
R-1	STA. 64+86.20 ☉	1	
R-2	STA. 62+58.00 89.00' LT. TO STA. 65+75.00 20.00' LT.		345
TOTALS		1	345

604	202
MONUMENT ASSEMBLIES	PIPE REMOVED (24" & UNDER)



REF.	LOCATION	EACH	LF
604	MANHOLE RECONSTRUCTED TO GRADE, AS PER PLAN	1	6
604	JUNCTION CHAMBER RECONSTRUCTED TO GRADE, AS PER PLAN	1	1
604	JUNCTION CHAMBER	1	1
604	CATCH BASIN, NO 3A, AS PER PLAN	1	2
604	MANHOLE, NO. 5, AS PER PLAN TYPE II	1	1
604	MANHOLE, NO. 5, AS PER PLAN TYPE I	1	1
603	72" CONDUIT, TYPE B, 706.02 RADIUS PIPE	69	232
603	72" CONDUIT, TYPE B, 706.02	45	163
603	54" CONDUIT, TYPE B, 706.02	15	54
603	12" CONDUIT, TYPE B, 706.02	78	297
TOTALS		135	517

DRAINAGE & SANITARY	
REF.	LOCATION
D-1	STA. 62+25.00 13.00' LT. TO STA. 62+40.00 17.00' LT.
D-2	STA. 62+40.00 17.00' LT. TO STA. 62+25.00 13.00' LT.
D-3	STA. 62+25.00 13.00' LT. TO STA. 62+68.00 93.00' LT.
D-4	STA. 62+68.00 93.00' LT. TO STA. 64+30.00 25.00' LT.
D-5	STA. 64+30.00 25.00' LT. TO STA. 64+12.60 51.00' RT.
D-6	STA. 64+12.60 51.00' RT. TO STA. 65+30.00 25.00' LT.
D-7	STA. 65+30.00 25.00' LT. TO STA. 65+75.00 23.00' LT.
S-1	STA. 62+35.00 10.00' RT.
S-2	STA. 62+35.00 33.00' RT.
S-3	STA. 63+04.00 34.00' RT.
S-4	STA. 63+55.00 44.00' RT.
S-5	STA. 64+85.00 9.00' RT.
S-6	STA. 64+25.00 8.00' RT.
S-7	STA. 65+32.00 44.00' LT.
TOTALS	