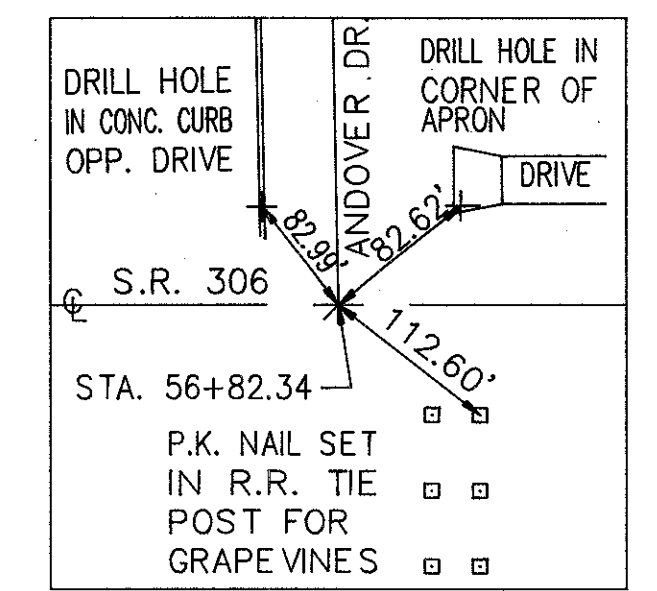
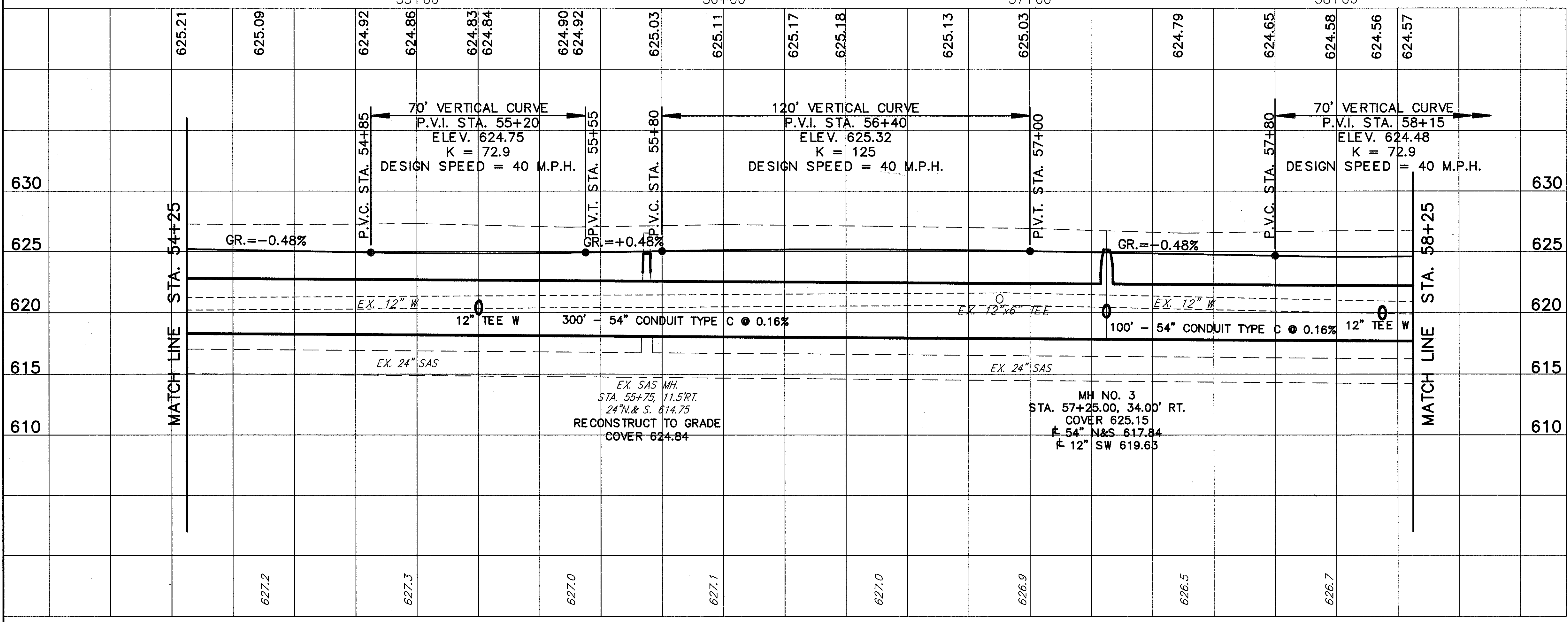


BENCHMARK: TOP OF HYDRANT  
 NW CORNER ANDOVER DR. &  
 SR 306 ELEV. 628.07



FOR TYPICAL SECTIONS SEE SHEET 6  
 FOR CROSS SECTIONS SEE SHEET 164-166  
 FOR SIGNING PLAN SEE SHEET 363-365  
 FOR PAVEMENT MARKING DETAILS SEE SHEET 352-353  
 FOR UNDERDRAIN QUANTITIES SEE SHEET 52-55  
 FOR CATCH BASIN DETAILS SEE SHEET 323  
 FOR DRIVEWAY DETAILS SEE SHEET 333-334  
 FOR DRIVEWAY PROFILES SEE SHEET 271-272  
 FOR STORM SEWER CONNECTION SCHEDULE SEE SHEET 68-70  
 FOR SANITARY SEWER CONNECTION SCHEDULE SEE SHEET 71-73  
 FOR SIDE STREET PLAN & PROFILE SEE SHEET 128  
 FOR INTERSECTION DETAILS SEE SHEET 306  
 FOR SANITARY SEWER DETAILS SEE SHEET 329-331

ROADWAY		PIPE REMOVED (24" & UNDER)	MONUMENT ASSEMBLIES
REF.	LOCATION	LF.	EACH
R-1	STA. 54+37.00 TO STA. 54+64.00, 33' RT.	27	
R-2	STA. 54+79.00 TO STA. 55+00.00, 22' LT.	21	
R-3	STA. 54+94.00 TO STA. 56+22.00, 32' RT.	28	
R-4	STA. 56+57.00 TO STA. 58+17.00, 22' LT.	60	
R-5	STA. 57+61.00 TO STA. 57+88.00, 32' RT.	27	
R-6	STA. 56+82.34		1
TOTALS		163	1



REF.	LOCATION	LF.	EACH
TEE	54" x 12" x 54"	EA	2
604	MANHOLE RECONSTRUCTED TO GRADE, AS PER PLAN	EA	1
604	CATCH BASIN, NO 3, AS PER PLAN	EA	4
604	CATCH BASIN, NO 3A, AS PER PLAN	EA	2
604	MANHOLE, NO. 3	LF.	1
603	54" CONDUIT, TYPE C, 706.02	LF.	400
603	12" CONDUIT, TYPE C, 706.02	LF.	14
603	12" CONDUIT, TYPE B, 706.02	LF.	21
TOTALS			2

DRAINAGE & SANITARY		LOCATION	LF.	EACH
D-1		STA. 55+20.00, 26.00' LT. TO STA. 55+20.00, 26.00' RT.	26.00	1
D-2		STA. 55+20.00, 26.00' RT. TO STA. 55+20.00, 34.00' RT.	34.00	1
D-3		STA. 54+25.00, 34.00' RT. TO STA. 57+25.00, 34.00' RT.	34.00	1
D-4		STA. 56+63.43, 45.00' LT. TO STA. 56+97.78, 45.00' LT.	45.00	1
D-5		STA. 57+25.00, 34.00' RT. TO STA. 57+25.00, 34.00' RT.	34.00	1
D-6		STA. 58+15.00, 26.00' LT. TO STA. 58+15.00, 26.00' RT.	26.00	1
D-7		STA. 58+15.00, 26.00' LT. TO STA. 58+15.00, 26.00' RT.	26.00	1
D-8		STA. 58+15.00, 26.00' LT. TO STA. 58+15.00, 34.00' RT.	34.00	1
S-1		STA. 55+75.00, 11.50' RT.		1
TOTALS				2

PLAN & PROFILE STA. 54+25 TO STA. 58+25