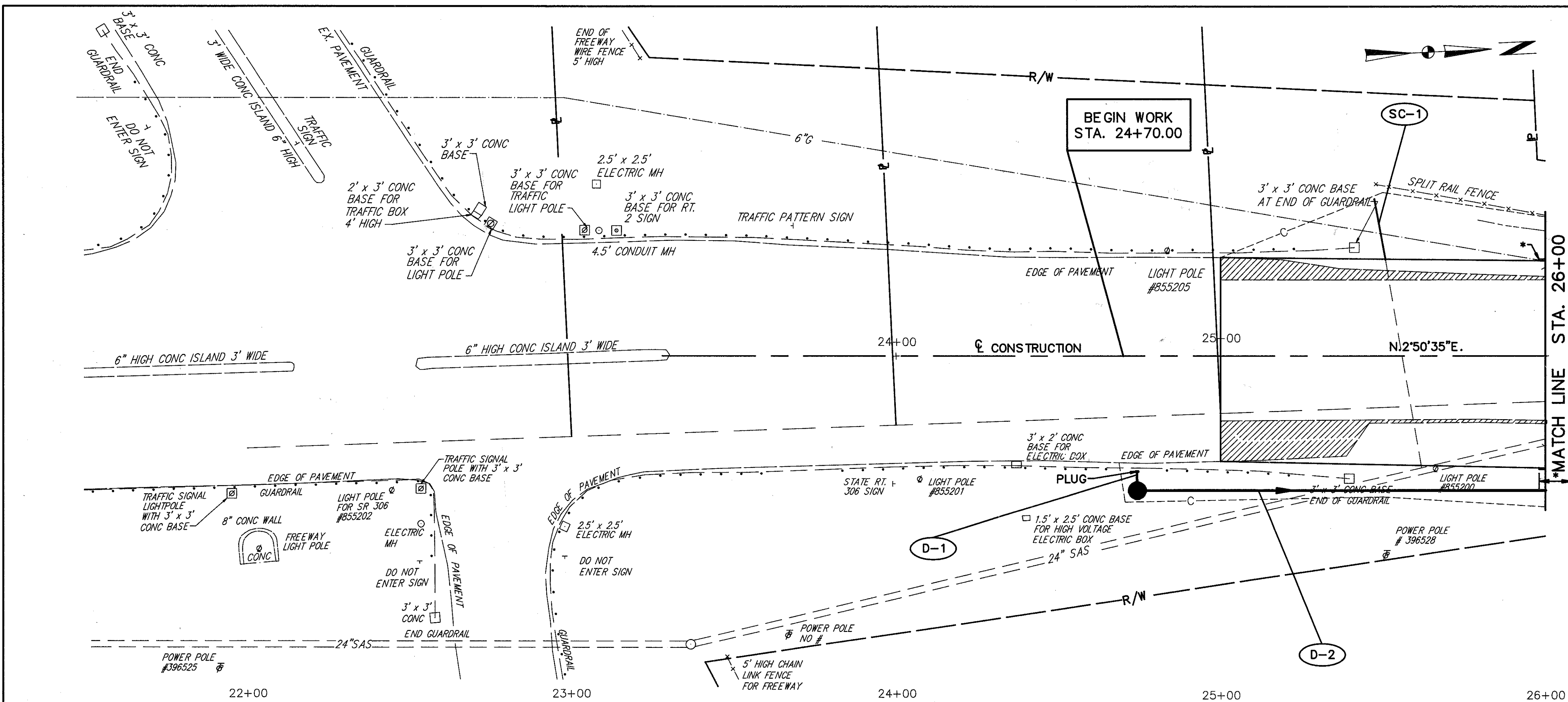
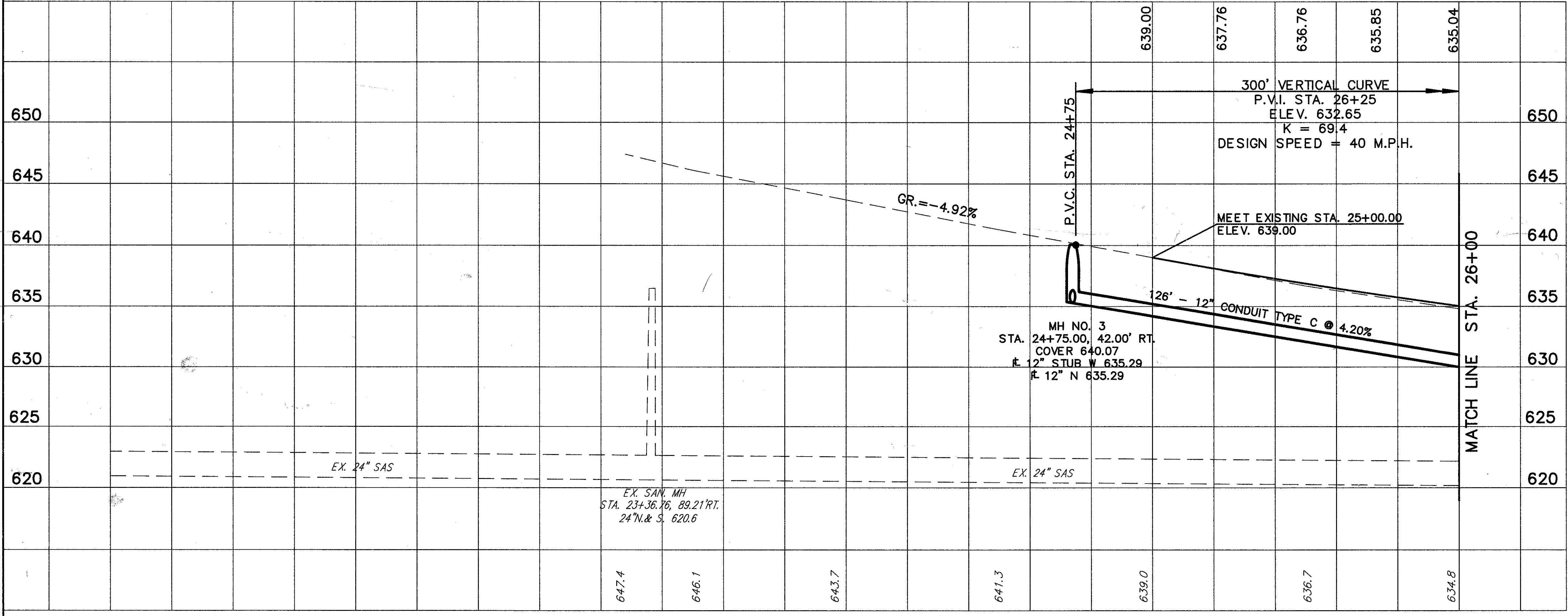
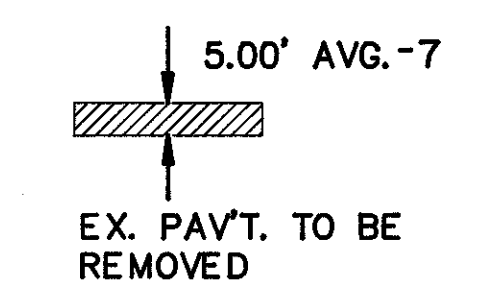


FOR TYPICAL SECTIONS SEE SHEET 4
FOR CROSS SECTIONS SEE SHEET 149
FOR SIGNING PLAN SEE SHEET 363-365
FOR PAVEMENT MARKING DETAILS SEE SHEET 352-353
FOR SANITARY SEWER CONNECTION SCHEDULE SEE SHEET 71-73
FOR CURB DETAILS SEE SHEET 332



BEGIN
10'-TAPER VERTICAL
CURB HEIGHT 0" TO 6"



| REF. | LOCATION | LF. | EA. | TOTALS |
|------|--|-----|-----|---------------|
| D-1 | STA. 24+75.00, 36.00 RT. TO 42.00 RT. | 6 | | |
| D-2 | STA. 24+75.00, 42.00 RT. TO STA. 26+00.00, 42.00 RT. | 126 | 1 | |
| | MANHOLE NO. 3 | | | 1 |
| | 12" CONDUIT, TYPE C, 706.02 | | | 132 |
| | | | | TOTALS |

PLAN & PROFILE STA. 21+50 TO STA. 26+00