

STATE OF OHIO
DEPARTMENT OF TRANSPORTATION

LAK-306-7.12

NON-FEDERAL

CITY OF MENTOR
LAKE COUNTY

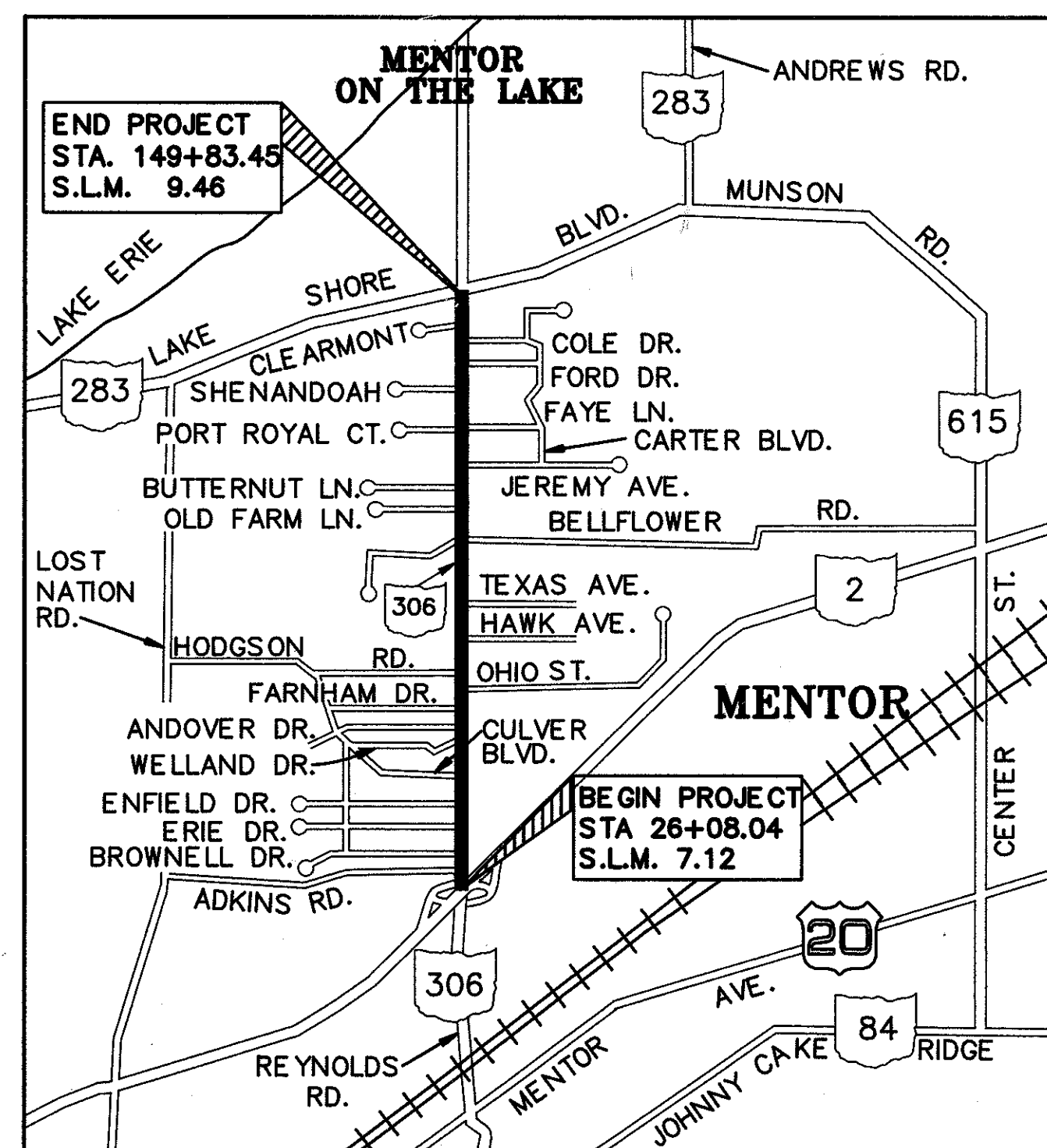
DESIGN	DESIGNATION	
Current Year	1990	24110
Design Year	2010	30190
D.H.V.		2717
D		60/40
T		2%
V		40 MPH
LEGAL SPEED		35 MPH
FUNCTIONAL CLASSIFICATION:	MINOR ARTERIAL	
DESIGN EXCEPTIONS	NONE	

CONVENTIONAL SIGNS

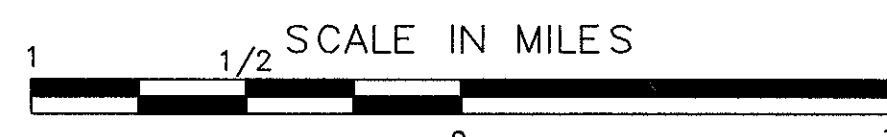
County Line	-----	Limited Access (only)	-----	LA
Township Line	-----	Right of Way (only)	-----	RW
Section Line	-----	Limited Access & Right of Way	-----	LA & RW
Corporation Line	-----	Existing Right of Way	-----	
Fence Line (existing)	- x -	Property Line (in existing fence)	- x -	
Center Line	-----	Railroad	-----	
Trees	⊗, ⊗	Guardrail (exist.)	-----	(prop.)
Stumps	⊗	Manholes (exist.)	○	(adjst.)
Utility Poles: Telephone	⊕	Manholes (adjst.)	○	(prop.)
Power	⊕	Catch or Inlet Basins (exist.)	⊔	(adjst.)
Light	⊕	Catch or Inlet Basins (prop.)	⊔	(prop.)

INDEX OF SHEETS

TITLE SHEET	1	SIDESTREET CROSS SECTIONS	222-261
SCHEMATIC PLAN	2-3	S.R. 306 DRIVEWAY PROFILES	262-294
TYPICAL SECTIONS	4-13	SIDESTREET DRIVEWAY PROFILES	295-302
GENERAL NOTES	14-16	INTERSECTION DETAILS	303-316
MAINTENANCE OF TRAFFIC	17-39, 39A, 40-44	JUNCTION CHAMBER DETAILS	317-320
PAVEMENT SUB-SUMMARY	45-47	CULVERT DETAILS	321-322
CURB SUB-SUMMARY	48-49	DRAINAGE DETAILS	323-328
SIDEWALK SUB-SUMMARY	50	SANITARY SEWER DETAILS	329-331
UNDERDRAIN SUB-SUMMARY	51-55	ROADWAY DETAILS	332
DRAINAGE SUB-SUMMARY	56-63	DRIVEWAY DETAILS	333-334
SANITARY SEWER SUB-SUMMARY	64-65	TRAFFIC CONTROL GENERAL NOTES	335, 335A
ROADWAY SUB-SUMMARY	66-67	TRAFFIC CONTROL GENERAL SUMMARY	336-337
HOUSE CONNECTION SCHEDULE	68-70	SIGNAL PLANS	338-347
SANITARY SEWER CONNECTION SCHEDULE	71-73	SYSTEM LOOP DETECTOR DETAILS	348-349
DRIVEWAY SUB-SUMMARY	74-79	PAVEMENT MARKING SUB-SUMMARY	350-351
EARTHWORK SUB-SUMMARY	80	PAVEMENT MARKING DETAILS	352-353
SODDING SUB-SUMMARY	81	SIGNING SUB-SUMMARY	354-362
SIDE DITCH INLET SUB-SUMMARY	82	TRAFFIC CONTROL SIGNING DETAILS	363-365
GENERAL SUMMARY	83-87	ELEVATION VIEWS/SCHOOL SIGN FLASHER DIAGRAM	366
S.R. 306 PLAN & PROFILE	88-121	INTERCONNECT DETAILS	367
SIDESTREET PLAN & PROFILE	122-148	TIME SPACE DIAGRAM & SIGNAL TIMING CHART	368-369
S.R. 306 CROSS SECTIONS	149-221	RIGHT OF WAY	370-452

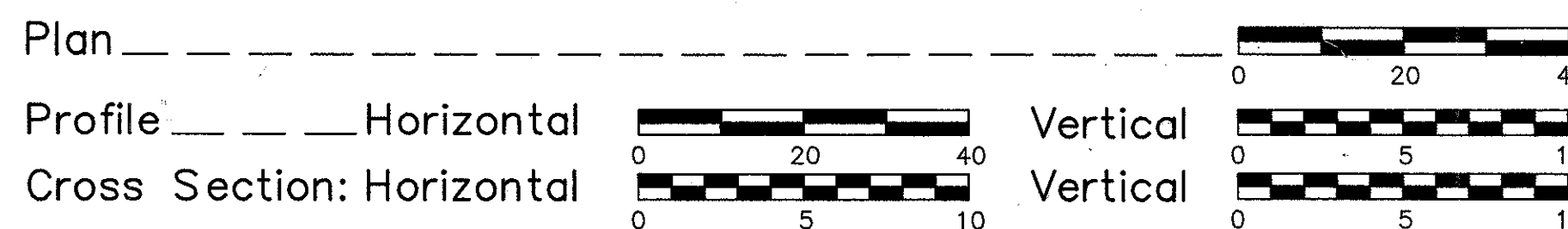


LOCATION MAP



Portion to be improved
State & Federal Routes
Other Roads

SCALES



LINE DATA

BEGIN PROJECT	STA. 26+08.04
END PROJECT	STA. 149+83.45
LENGTH OF PROJECT	12,375.41 L.F. OR 2.344 MILES
BEGIN WORK	STA. 24+70.00
END WORK	STA. 153+90.00
LENGTH OF WORK	12,920.00 L.F. OR 2.447 MILES
BEGIN WORK	STA. 6+00.00
END WORK	STA. 15+35.00
LENGTH OF WORK (LAKESHORE BLVD.)	935.00 L.F. OR 1.77 MILES
TOTAL LENGTH OF WORK	13,855.00 L.F. OR 2.624 MILES

SUPPLEMENTAL PRINTS OF STANDARD CONSTRUCTION DRAWINGS									
BP-1	6-1-65	MC-9A	1-11-85	HW-4B	4-1-80	HL-30.11	5-1-87	TC-81.20	1-20-84
BP-2	1-11-85	MC-11	8-1-78	I-1	12-18-84	HL-30.22	5-1-87	TC-82.10	8-29-84
BP-3	12-6-76			I-2A	12-18-84	TC-12.30	1-20-84	TC-83.10	1-20-84
BP-4	10-1-87			MH-1	12-18-84	TC-16.20	1-20-84	TC-83.20	1-20-84
BP-5	10-1-87			MH-3	12-18-84	TC-21.20	1-20-84	TC-85.10	1-20-84
BP-7	10-1-87			MH-5	6-12-75	TC-22.10	3-1-79	TC-85.20	1-20-84
		CB-2-3 & 2-4	5-1-79			TC-22.20	3-1-79	MT-95.31	10-10-88
BR-12	10-1-87	CB-2-5 & 2-6	5-1-79	MT-99.10	11-14-86	TC-41.20	3-26-79	MT-97.10	4-29-88
		CB-3	5-1-79	MT-99.20	4-29-88	TC-41.40	6-18-79		
		CB-3A	5-1-79			TC-42.20	3-26-79		
						TC-52.10	4-3-79		
MC-1	6-13-69					TC-52.20	4-3-79		
MC-4	7-26-76					TC-71.10	4-9-79		

UNDERGROUND UTILITIES
TWO WORKING DAYS
BEFORE YOU DIG
CALL 800-362-2764 (TOLL FREE)
OHIO UTILITIES PROTECTION
SERVICE
NON-MEMBERS
MUST BE CALLED DIRECT

SUPPLEMENTAL SPECIFICATIONS	
847	10-17-83
947	10-17-83
931	6-18-85
942	11-27-89

TRAFFIC SIGNAL ADDED AT
ADKINS RD. BY CHANGE ORDER
MYLARS ENCLOSED

1989 SPECIFICATIONS

The standard specifications of the State of Ohio, Department of Transportation, including changes and supplemental specifications listed in the proposal shall govern this improvement.

I hereby approve these plans and declare that the making of this improvement will not require the closing to traffic of the highway and that provisions for the maintenance and safety of traffic will be as set forth on the plans and estimates.

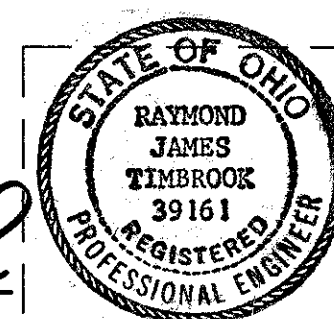
Approved Walter A. Gullot
Date 9/10/90 District Deputy Director of Transportation

Approved _____
Date _____ Engineer, Bureau of Bridges and Structural Design

Approved Chadler J. Stett
Date 9/27/90 Chief Engineer, Planning and Design

Approved Richard O. Hunt
Date 9/27/90 Director, Department of Transportation

CT Consultants, Inc.
Engineers • Architects • Planners
Willoughby • Mentor • North Canton • Youngstown • Lorain



Project: _____
Date of Letting: _____ 19__ , Contract No. _____
RAYMOND J. TIMBROOK
REGISTERED ENGINEER NO. 39161

08953