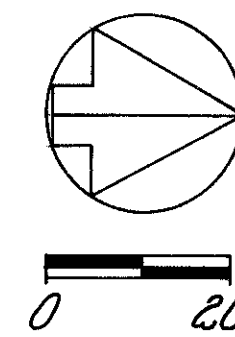


TRACT 9, TOWNSHIP 10, RANGE 9  
CONNECTICUT WESTERN RESERVE  
CITY OF MENTOR

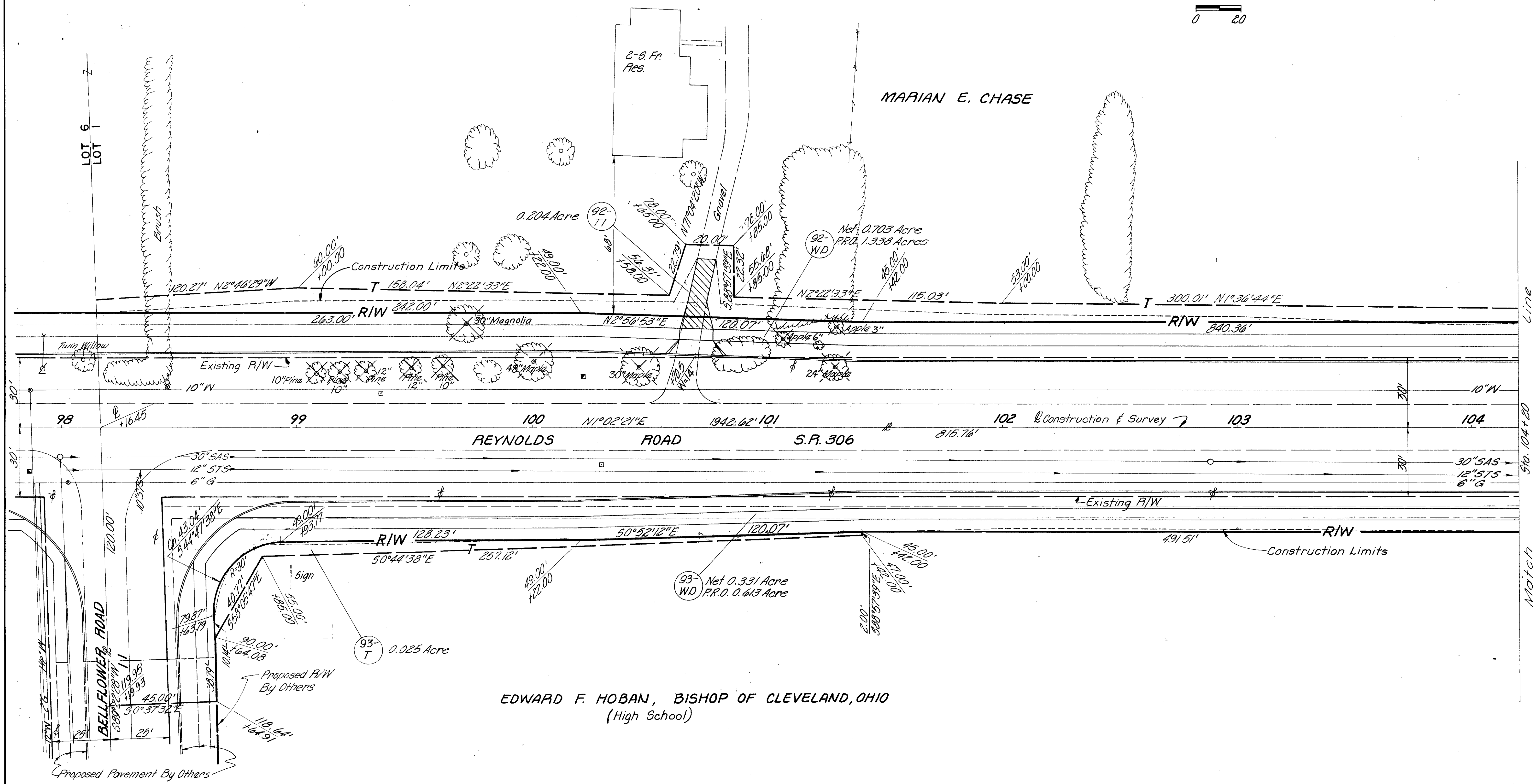


FED. RD. DIVISION	STATE	PROJECT
2	OHIO	

LAK-300-0.91

64  
73

28  
37



EDWARD F. HOBAN, BISHOP OF CLEVELAND, OHIO  
(High School)

REV	DATE	DESCRIPTION

RIGHT OF WAY 98+2.0 TO 104+2.0