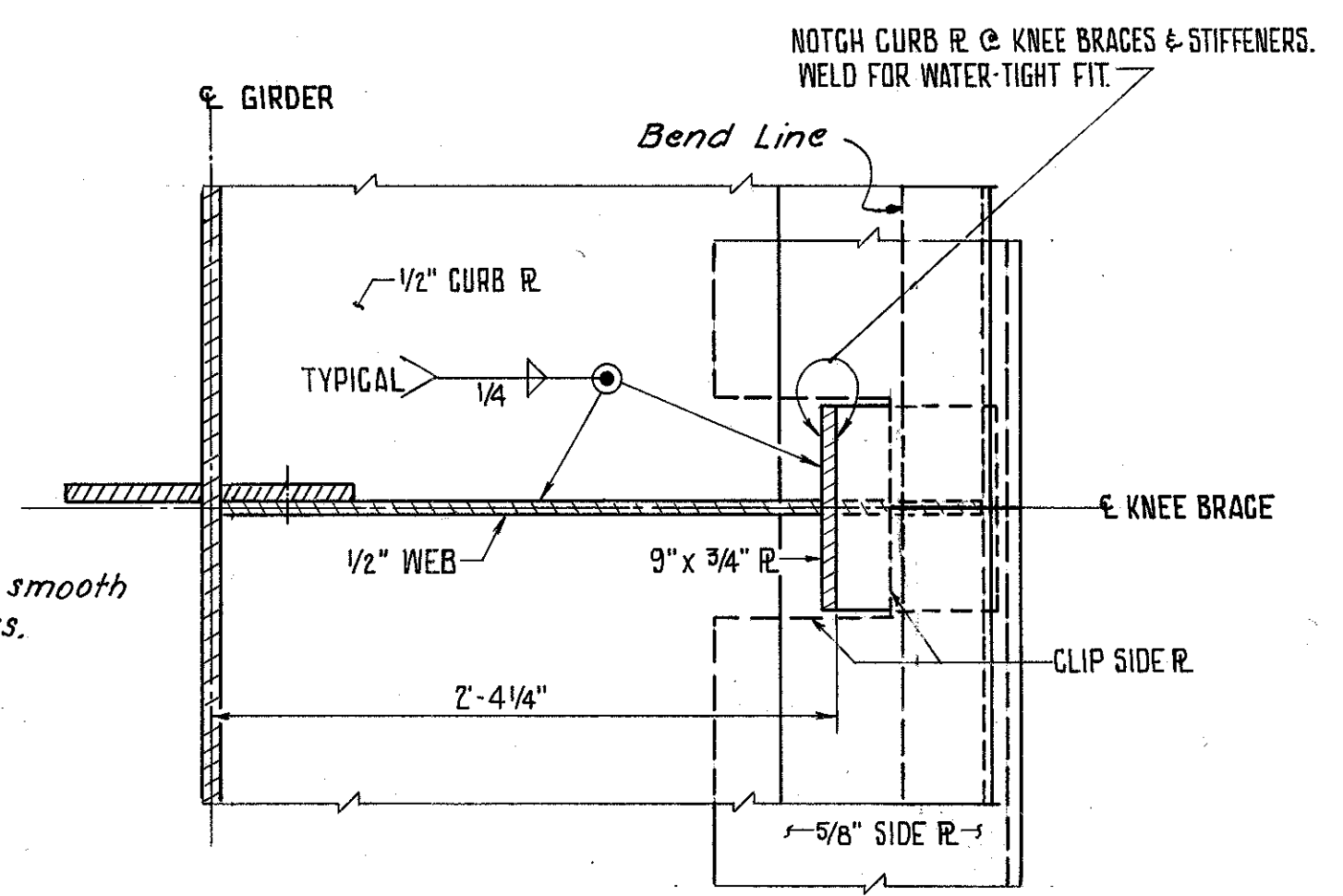
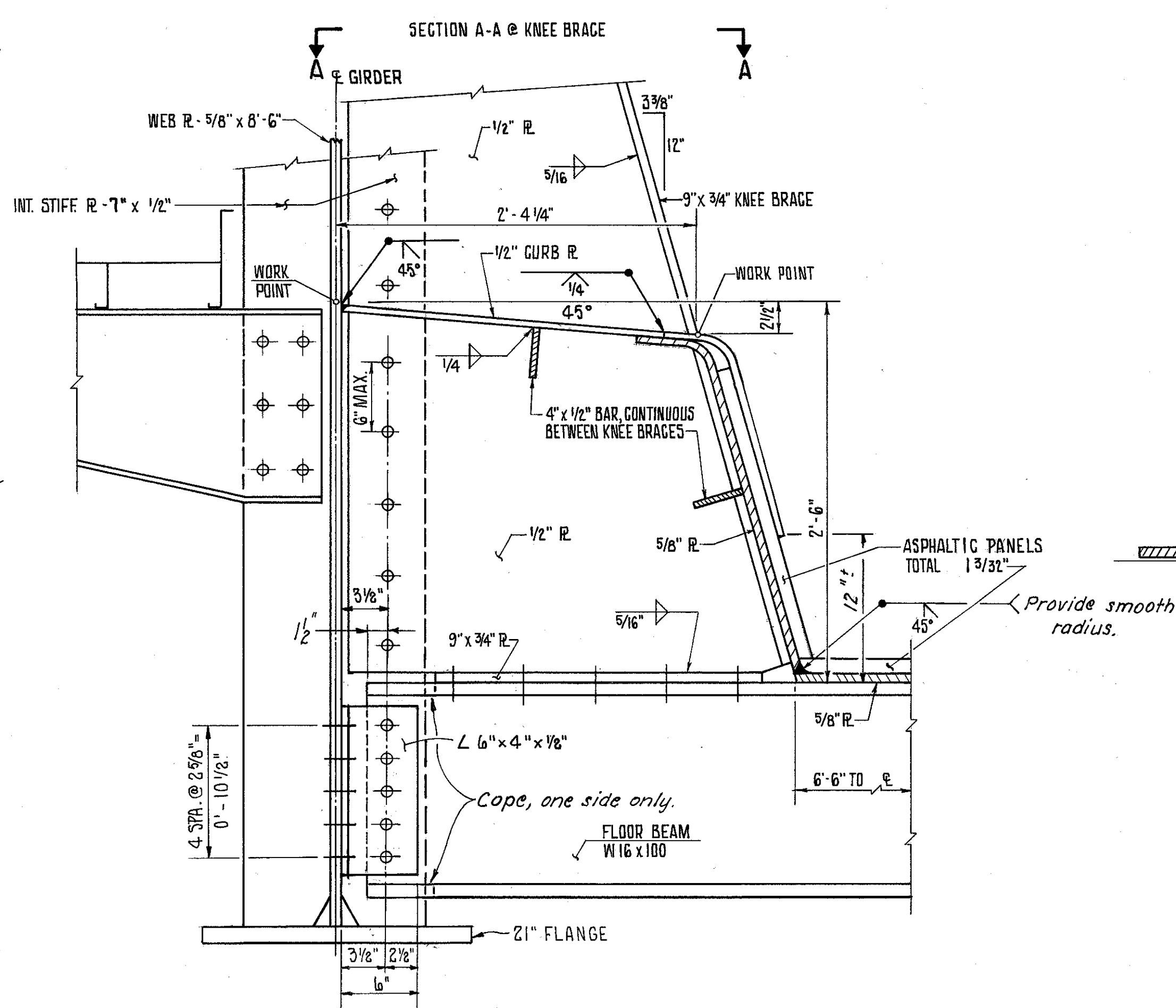
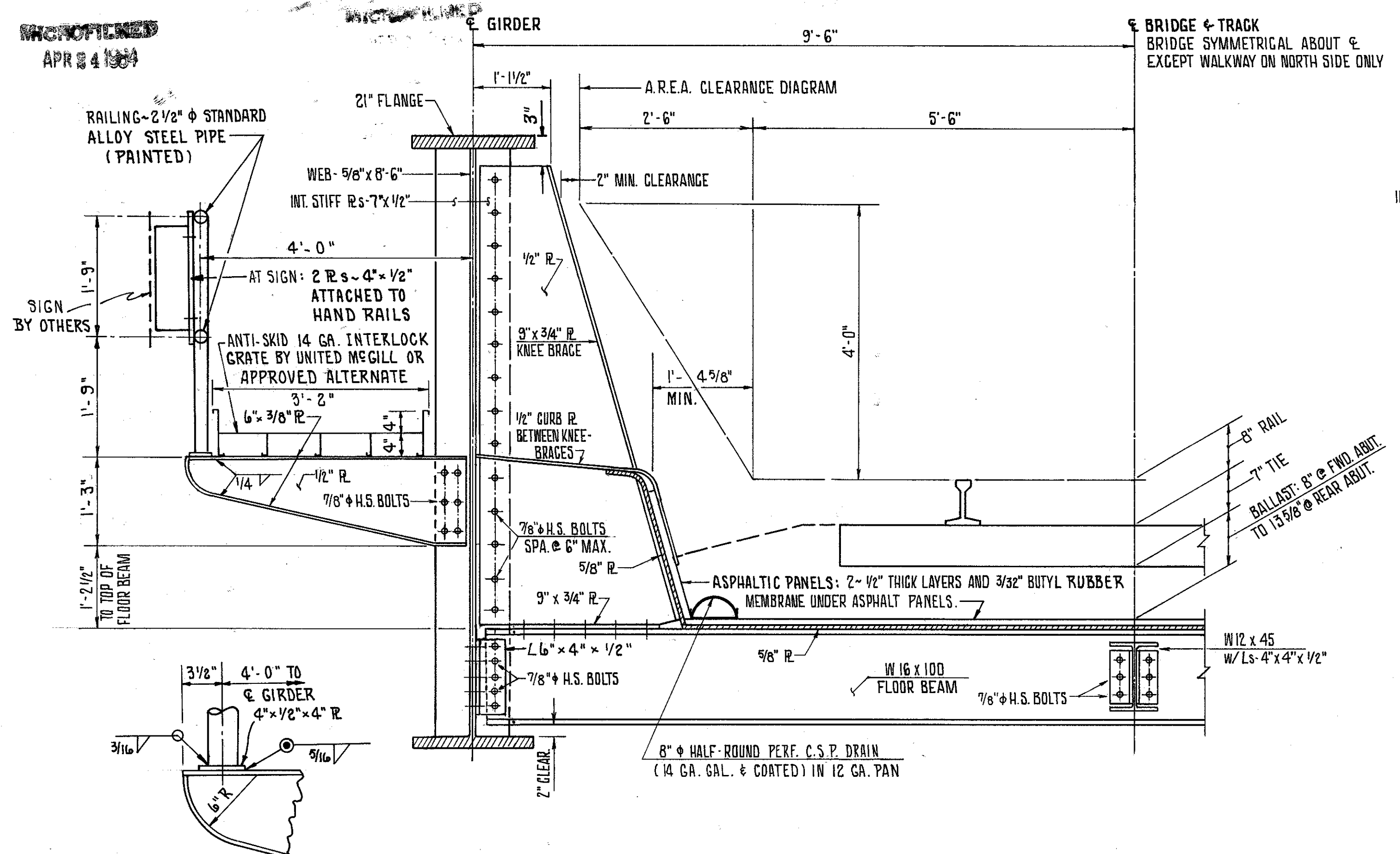


APR 24 1964

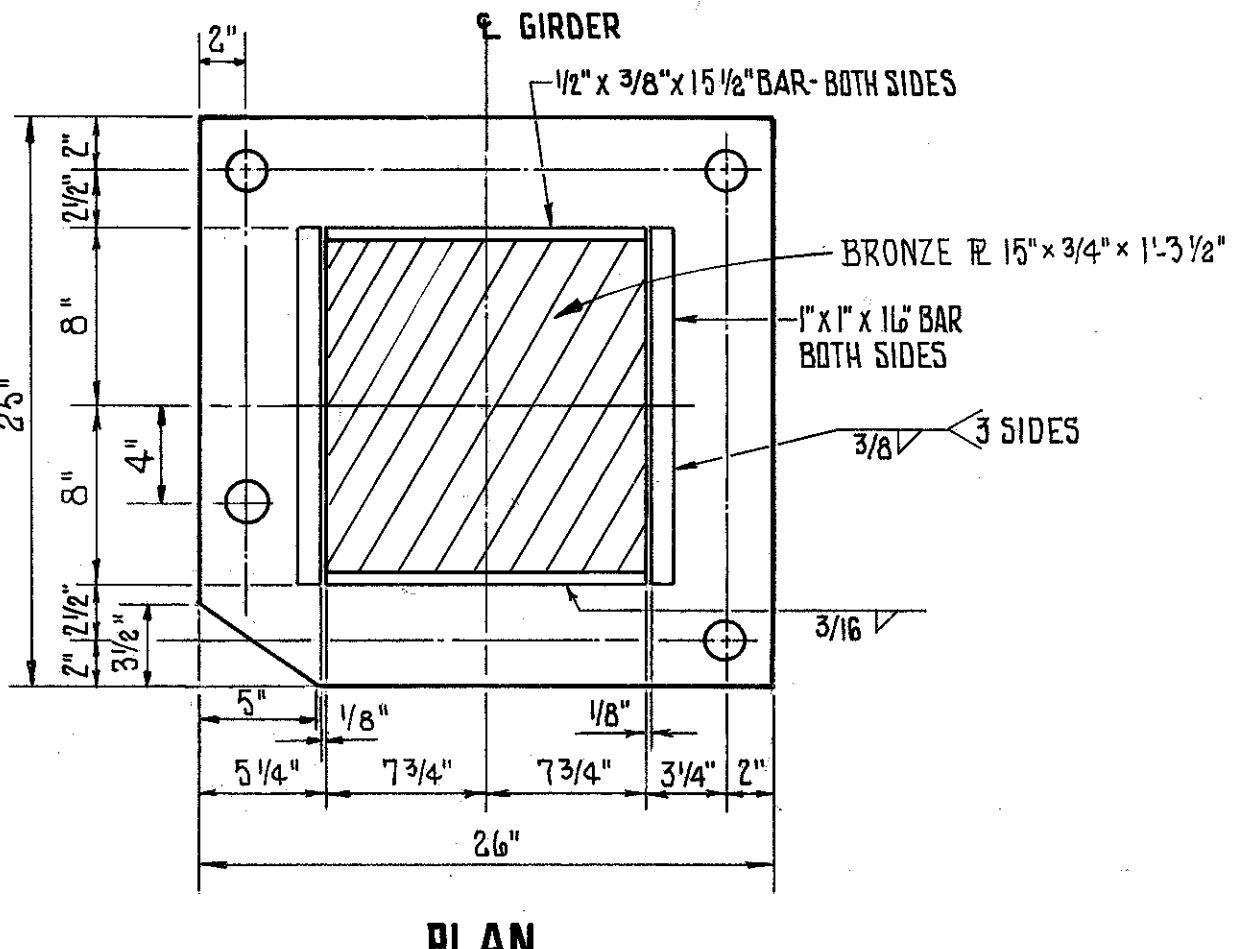
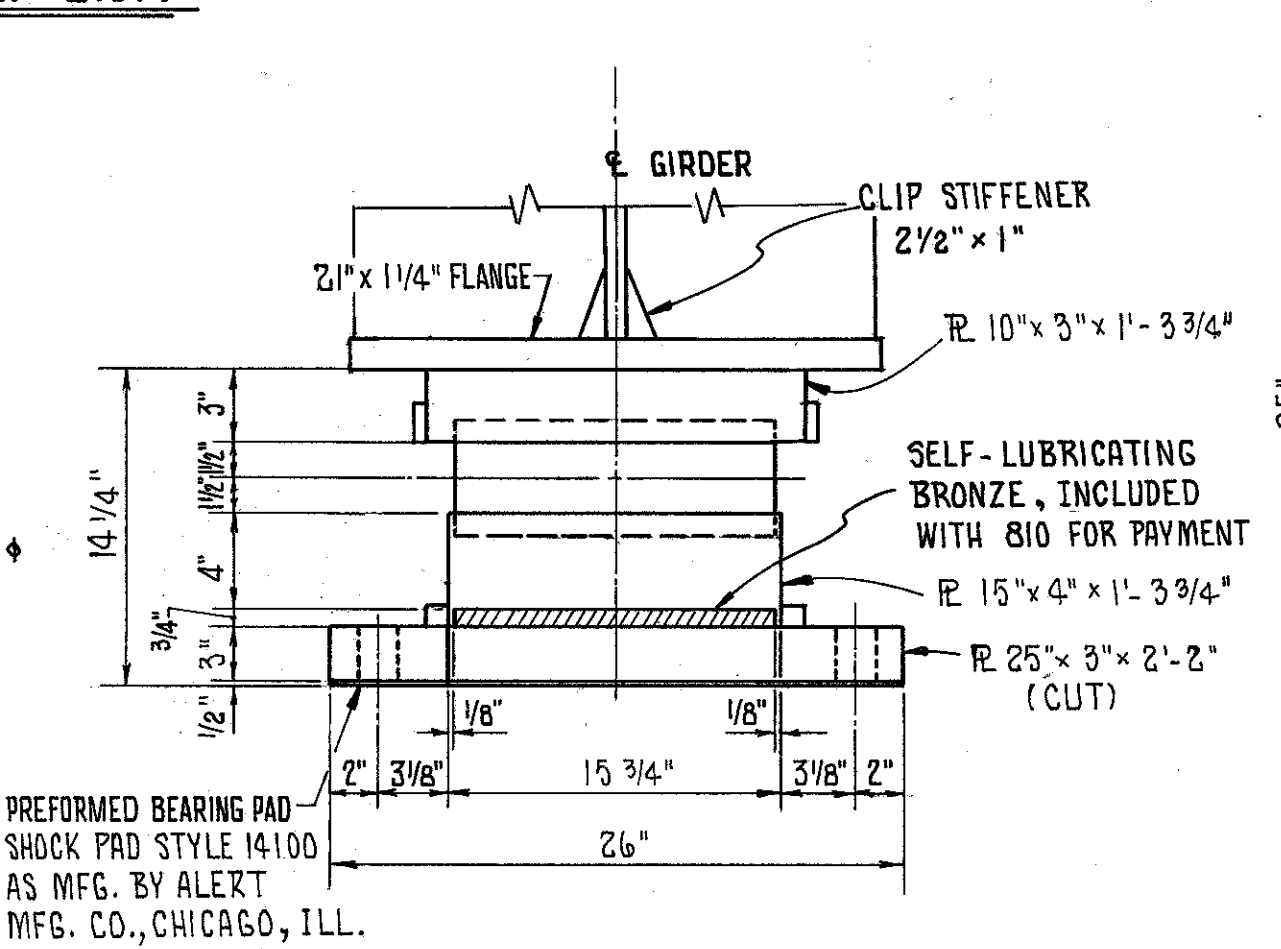
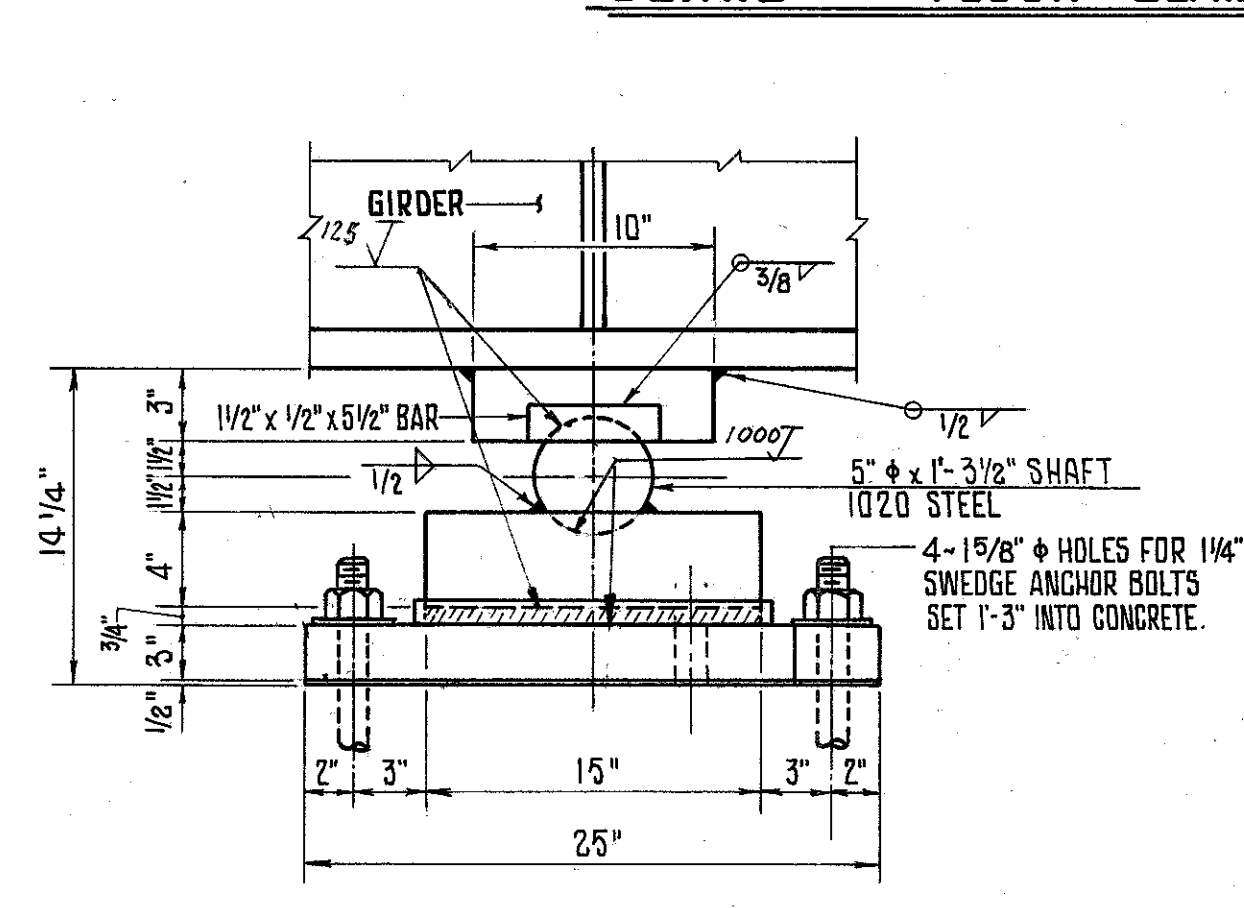
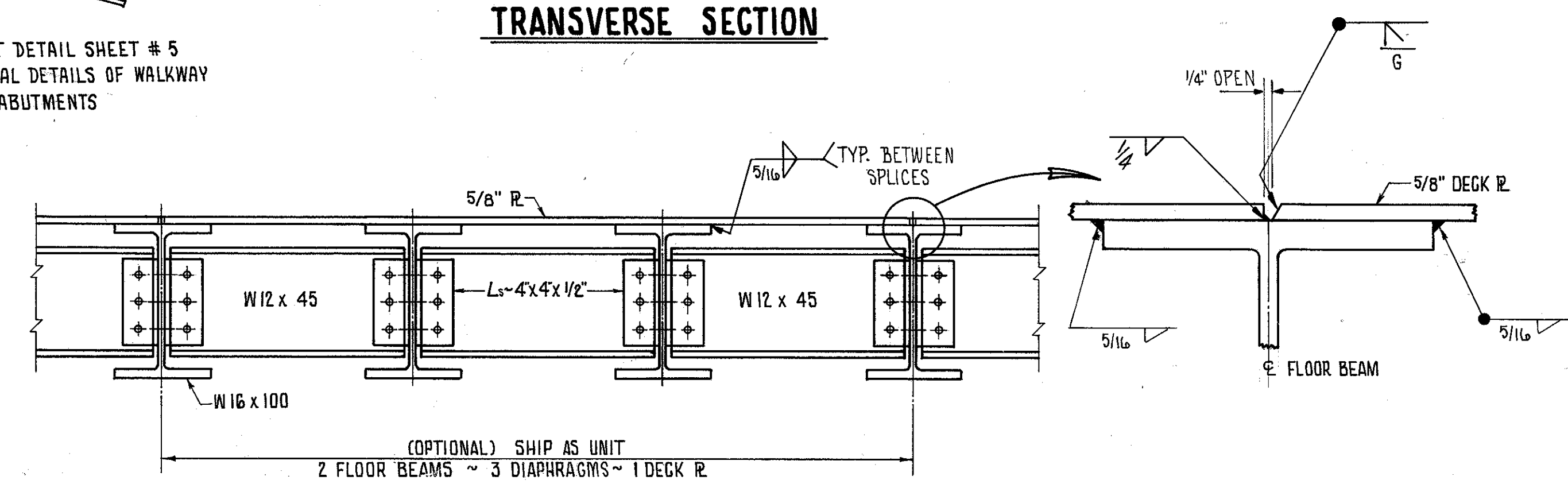
FHWA REGION	STATE	PROJECT	
5	OHIO		

70
101

LAKE COUNTY
LAK 306-6.15



SEE ABUTMENT DETAIL SHEET # 5 FOR ADDITIONAL DETAILS OF WALKWAY GRATING ON ABUTMENTS



NOTE:
SEE ABUTMENT DETAILS FOR ADDITIONAL STRUCTURAL STEEL.
ALL BOLTS 7/8" H.S. WITH 1/16" ϕ OPEN HOLES

Revised 11-25-80

FRANKLIN CONSULTANTS INC. 10 / 28
Consulting Engineers

COLUMBUS, OHIO

SUPERSTRUCTURE DETAILS

BRIDGE NO. LAK - 306 - 0635
S. R. 306 UNDER N. & W. RAILROAD

DESIGNED	DRAWN	TRACED	CHECKED	REVIEWED	DATE	REVISED
MM	MM	GKS	SM	JL	11/22/77	

BRUNING 44-132 30845-1