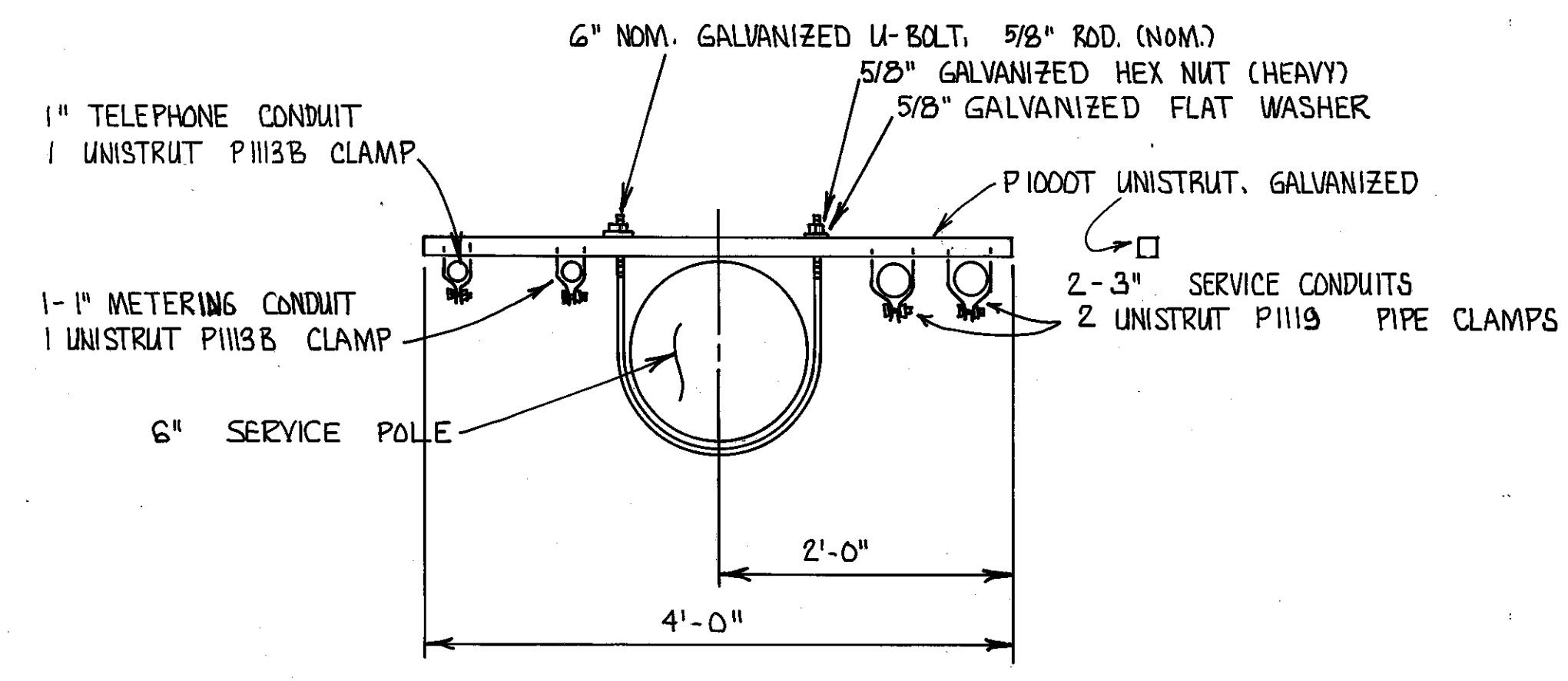
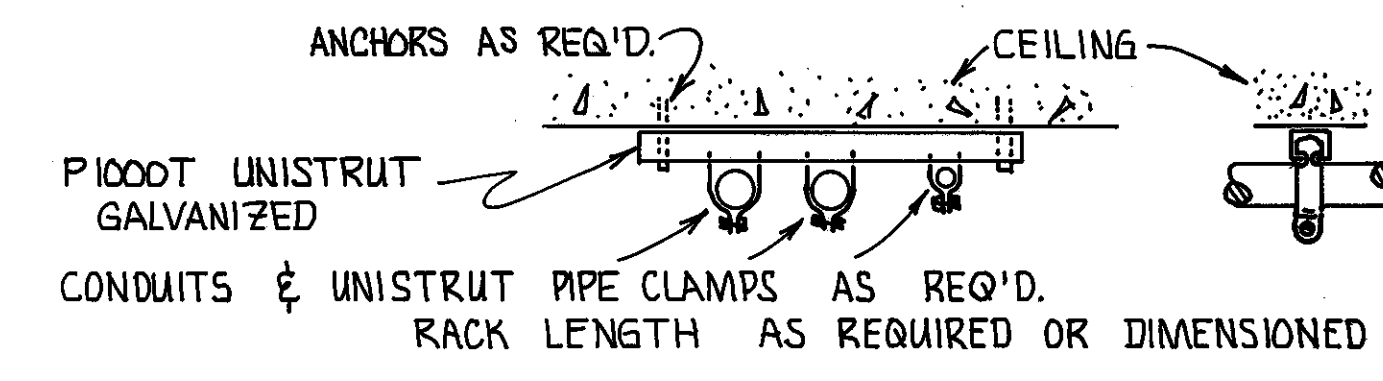


ALL MATERIALS TO BE HOT DIPPED GALVANIZED AFTER DRILLING AND REAMING IN ADDITION TO ORIGINAL MANUFACTURERS TREATMENT. NO FIELD CUTTING TO BE ALLOWED AFTER FINAL GALVANIZING.



**SERVICE POLE CONDUIT RACK DETAIL**  
NO SCALE - TYPICAL 3 PLACES

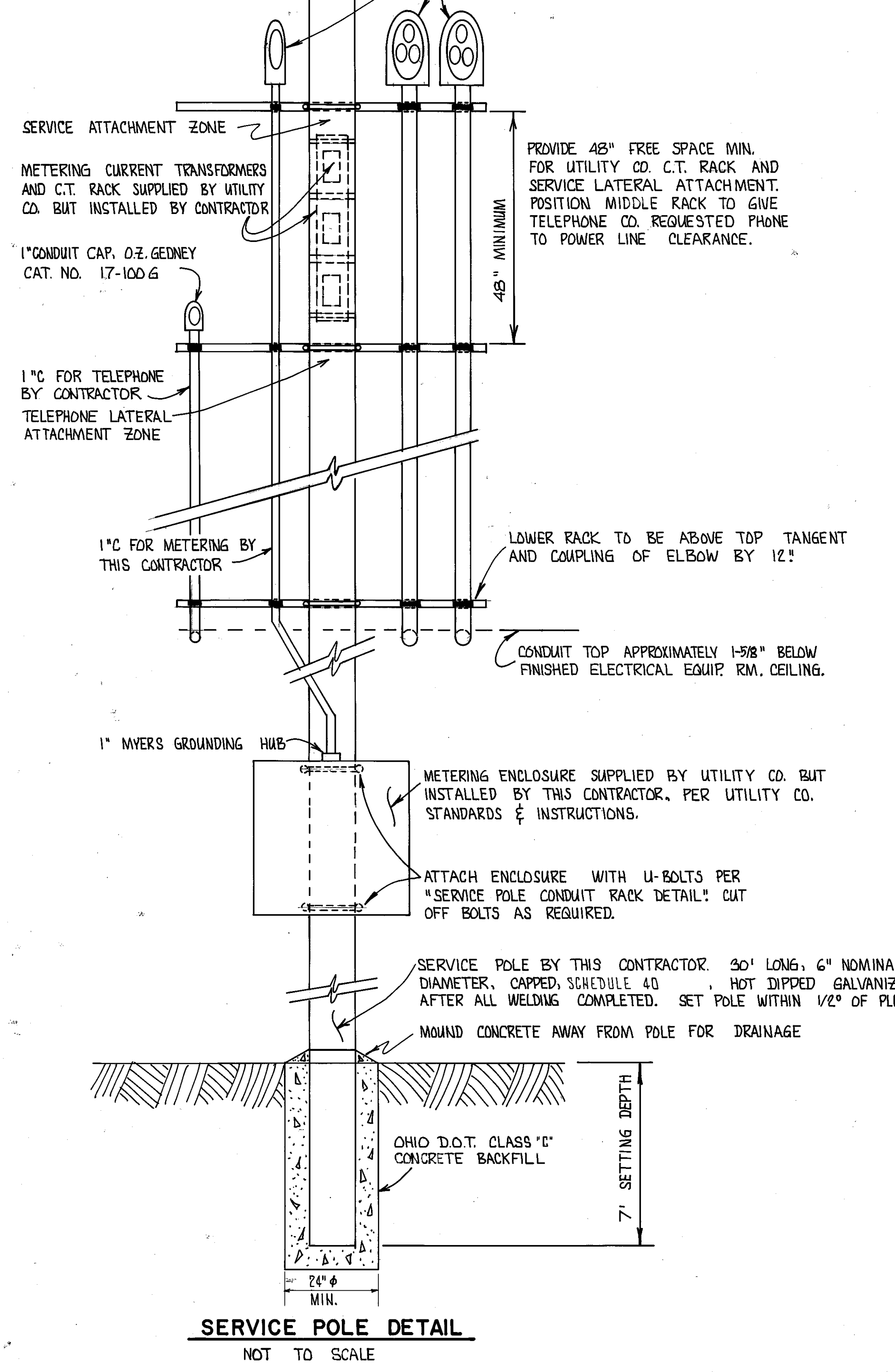


**CEILING CONDUIT RACK DETAIL**  
NOT TO SCALE

**GENERAL NOTES**

1. GALVANIZING SHALL BE IN ACCORDANCE WITH A.S.T.M. SPECIFICATIONS A123, A153 & A336 AS APPLICABLE TO STRUCTURE BEING TREATED.
2. CONDUIT SHALL BE OF A BRAND OFFERING POST THREAD CUTTING GALVANIZING APPLICATION, AND SHALL BE SO GALVANIZED.

THREADED PIPE CAP OR 1/4" WELDED FLAT CAP, EITHER TO BE GALVANIZED AFTER ATTACHMENT  
1" CONDUIT CAP, O.Z. GEDNEY CAT. NO. 17-100 G  
2- 3" CONDUIT CAPS, O.Z. GEDNEY CAT. NO. 17-300 G



**SERVICE POLE DETAIL**  
NOT TO SCALE

ELECTRICAL PLANS E-5

FRANKLIN CONSULTANTS INC. Consulting Engineers						
COLUMBUS, OHIO						
<b>PUMP STATION ELECTRICAL SERVICE ENTRANCE DETAILS</b>						
DESIGNED	DRAWN	TRACED	CHECKED	REVIEWED	DATE	REVISED
R.B.H.	R.B.H.			WP		