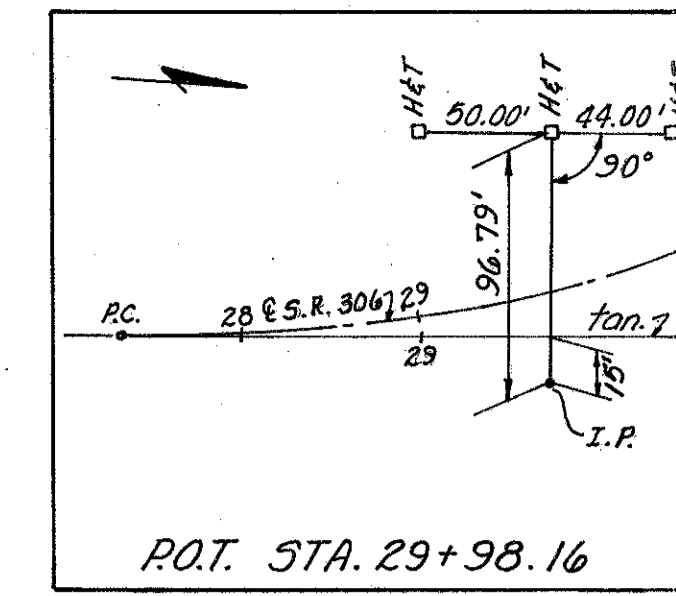


EX. CURVE DATA  
 PI = 28+86.39  
 Δ = 6° 00' 00"  
 D = 2° 00' 00"  
 R = 2864.789'  
 T = 150.14'  
 L = 300.00'  
 E = 3.93'



FHWA REGION	STATE	PROJECT	23
5	OHIO		101

LAKE COUNTY  
 LAK-306-6.15

CALC: PCB 11-78  
 CHK: ROB 1-79

- NOTES
- FOR DETAILS OF PUMP STATION SEE SHEETS 33.
  - FOR STORM SEWER PROFILE AND QUANTITIES SEE SHEETS 30+32.
  - FOR SANITARY SEWER PROFILE AND QUANTITIES SEE SHEETS 31+32.
  - FOR DRIVE PROFILES SEE SHEET 28.
  - FOR PAVEMENT DETAIL SEE SHEET 29.
  - FOR PAVEMENT QUANTITIES SEE SHEET 11+12.

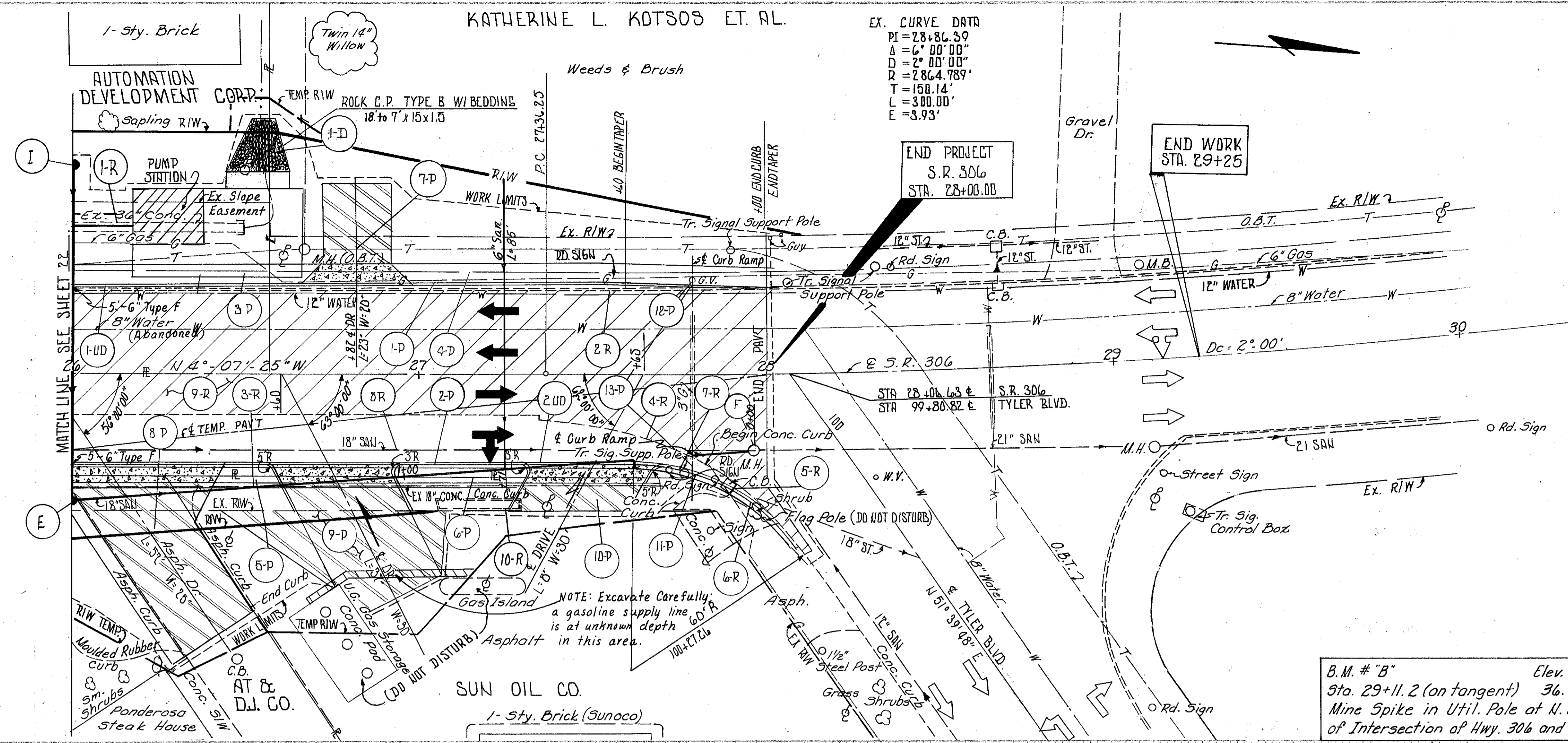
CALCULATIONS

1-D ITEM 601  $\frac{1}{2}(7+18.5)15 \times 2 = 14.2$  C.Y.  
 6-R ITEM 202  $\frac{1}{2}(4+1)16 \times 9 = 4.4$  S.Y.  
 9-R ITEM 202  $\frac{1}{2}(200 \times 36 + 1 \times 2(36 \times 27) + (2 \times 30) + \frac{1}{2}(36 \times 3.5) + \frac{1}{2}(2 \times 4)17) \times 9 = 878$  S.Y.

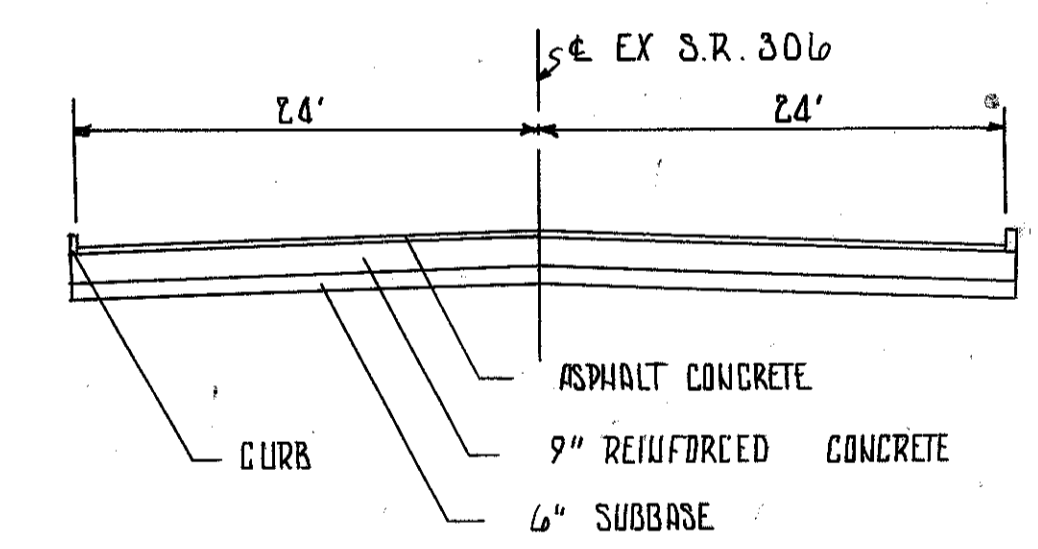
LEGEND

- ITEM 202 PAVEMENT REMOVED
- ITEM 452 8" PLAIN PORTLAND CEMENT CONCRETE
- ITEM 404 1" ASPHALT CONCRETE ON ITEM 301 5" BITUMINOUS AGGREGATE BASE

B.M. # "B" Elev. 644.55  
 Sta. 29+11.2 (on tangent) 36.6' RT.  
 Mine Spike in Util. Pole at N.E. corner of Intersection of Hwy. 306 and Tyler Blvd.



EXCAVATION	1559	C.Y.
EMBANKMENT	11	C.Y.
SEEDING	403	S.Y.



EX. S.R. 306 TYPICAL SECTION

Ref.	Station to Station	Side	* WITH BEDDING						L65	L63	
			202 PAVEMENT REMOVED	202 PIPE REMOVED	202 PIPE REMOVED OVER 24"	202 CURB REMOVED	202 CATCH BASIN ABANDON	601 ROCK CHANNEL PROTECTION TYPE 'B' **			
			S.Y.	E.A.	L.F.	L.F.	L.F.	E.A.	C.Y.	L.F.	L.F.
1-R	26+00 TO 26+49	LT.									
8-R	26+00 TO 28+00	LT.				49		200			
3-R	26+00 TO 27+88	RT.			188						
4-R	27+34 TO 28+10	RT.					92				
5-R	27+88	RT.						1			
6-R	27+88 TO 28+02	RT.	5								
7-R	27+75	RT.		1							
1 UD	26+00 TO 28+00	LT.								195	6
2 UD	26+00 TO 100+27.26 (TYLER)	RT.								215	5
1-D	26+45 TO 26+65	LT.							14		
8-R	26+00 TO 27+96	RT.			196						
9-R	26+00 TO 28+00	LT & RT	878								
10-R	27+05 TO 27+30	RT.					55				
TOTALS			883	1	384	49	347	1	14	410	10

