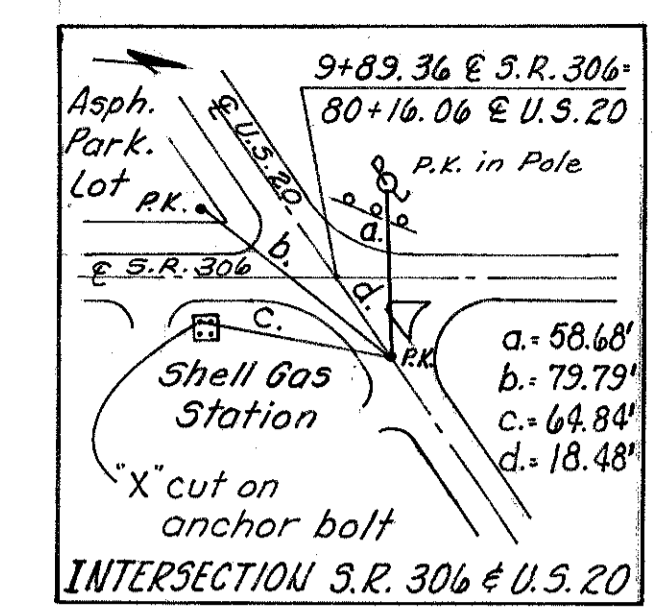


LAKE COUNTY
LAK-306-6.15

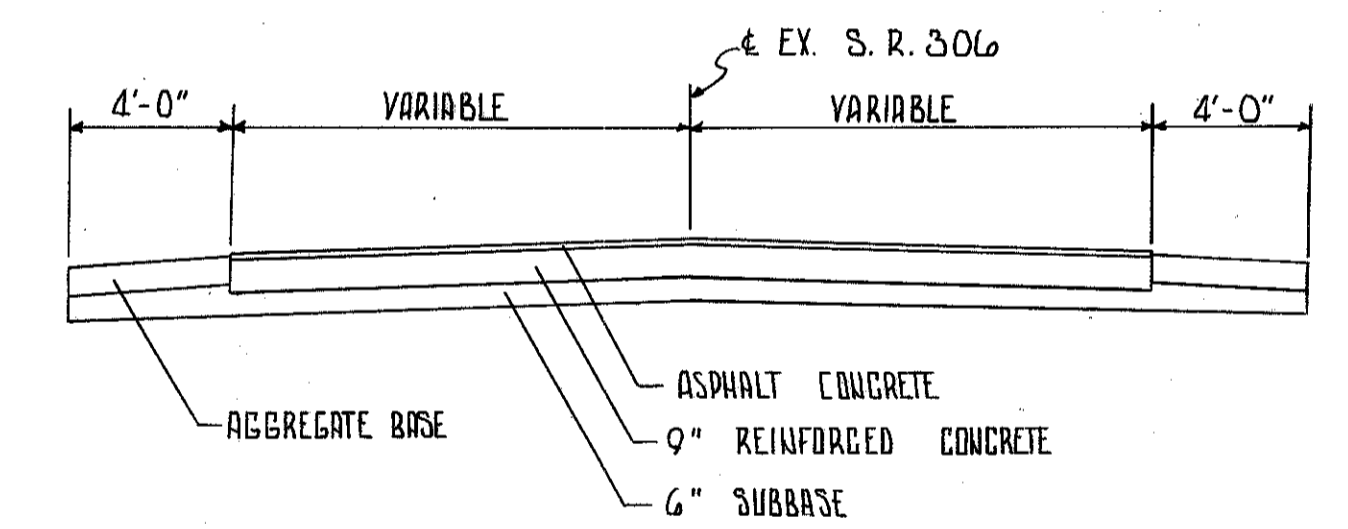
CALC: PCB 11-78
CHK: ROB 12-78



NOTES
1. FOR PAVEMENT DETAILS SEE SHEET 29.
2. FOR DRIVE PROFILE SEE SHEET 23.
3. FOR PAVEMENT QUANTITIES SEE CALC. SHEET 11&12.

CALCULATIONS
2-R ITEM 202 $(300 \times 24) + \frac{1}{2}(120 \times 12) + (100 \times 12) + \frac{1}{2}(20 \times 6) = 1020$ S.Y.

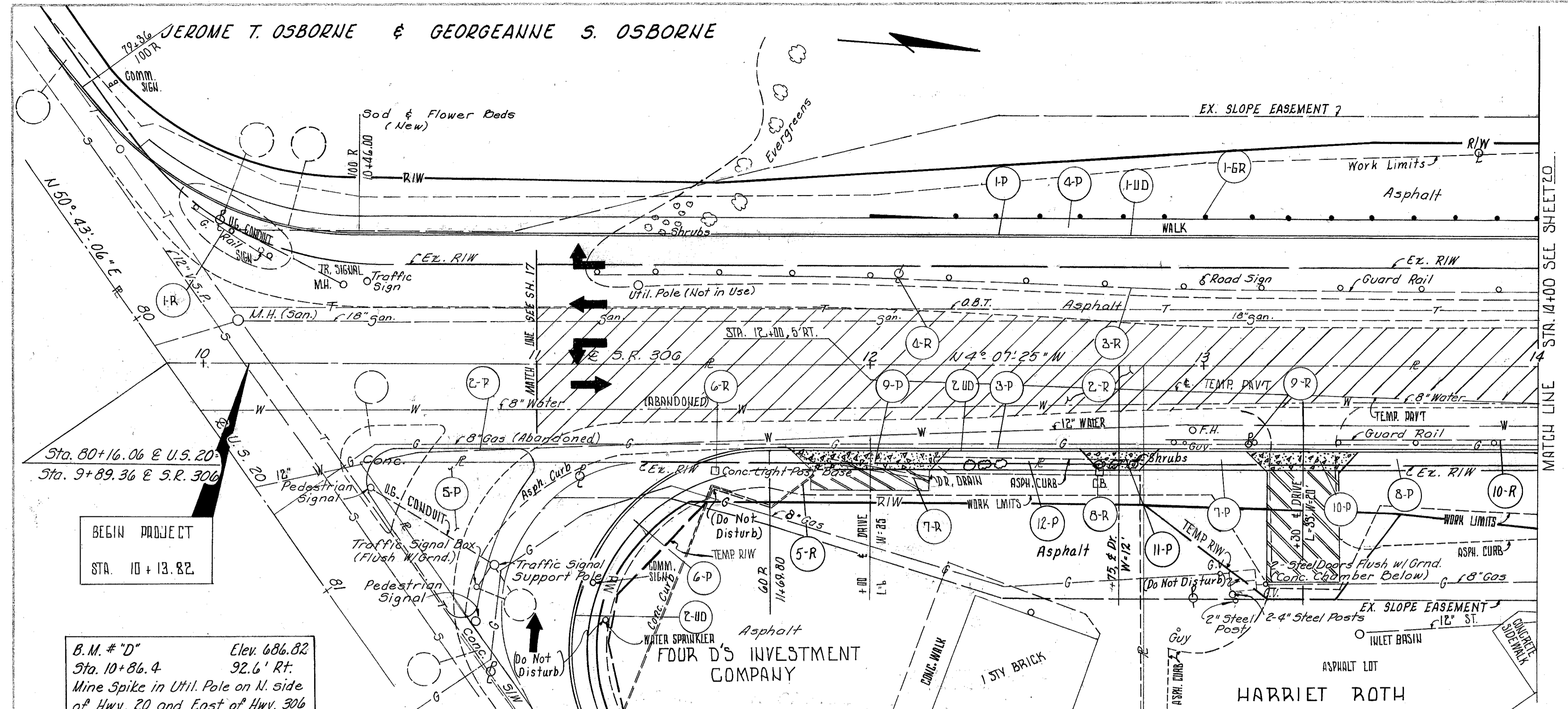
- LEGEND
- ITEM 202 PAVEMENT REMOVED
 - ITEM 452 8" PLAIN PORTLAND CEMENT CONCRETE
 - ITEM 404 1" ASPHALT CONCRETE ON ITEM 301 5" BITUMINIOUS AGGREGATE BASE



EX. S.R. 306 TYPICAL SECTION

| Ref. | Station to Station | Side | 202 CONCRETE EXCAVATION REMOVED | 202 PAVEMENT REMOVED | 202 CURB REMOVED | 202 GUARD RAIL REMOVED | 202 CATCH BASIN OR INLET REMOVED | 605 6" SHALLOW DIPE UNDERDRAIN | 606 GUARD RAIL TYPE 5 | 606 INLET BASEMENT |
|--------|-------------------------|------|---------------------------------|----------------------|------------------|------------------------|----------------------------------|--------------------------------|-----------------------|--------------------|
| | | | EA. | S.Y. | L.F. | L.F. | E.A. | L.F. | L.F. | EA. |
| 1-R | 9+97 TO 10+21 | LT. | | | | 28 | | | | |
| 2-R | 11+00 TO 14+00 | RT. | | 1020 | | | | | | |
| 3-R | 11+17 TO 14+00 | LT. | | | | 283 | | | | |
| 4-R | 12+08 | LT. | 1 | | | | | | | |
| 5-R | 11+76 TO 11+83 | RT. | | | 9 | | | | | |
| 6-R | 11+54 | RT. | 1 | | | | | | | |
| 7-R | 11+87 TO 12+17 | RT. | | | | | 1 | | | |
| 8-R | 12+69 | RT. | | | | | 1 | | | |
| 9-R | 12+89 TO 13+15 | RT. | | | | 26 | | | | |
| 10-R | 13+40 TO 14+00 | RT. | | | | 60 | | | | |
| 1-UD | 10+46 TO 14+00 | LT. | | | | | | 354 | | |
| 2-UD | 81+88 (US. 20) TO 14+00 | RT. | | | | | | 363 | | |
| 1-6R | 12+00 TO 14+00 | LT. | | | | | | | 175 | 1 |
| TOTALS | | | 2 | 1020 | 9 | 397 | 2 | 717 | 175 | 1 |

S.R. 306 Sta. 10+00 to Sta. 14+00



BEGIN PROJECT
STA. 10+13.82

B.M. # "D" Elev. 686.82
Sta. 10+86.4 92.6' RT.
Mine Spike in Util. Pole on N. side of Hwy. 20 and East of Hwy. 306

EXCAVATION 2250 C.Y.
EMBANKMENT 0 C.Y.
SEEDING 710 S.Y.

