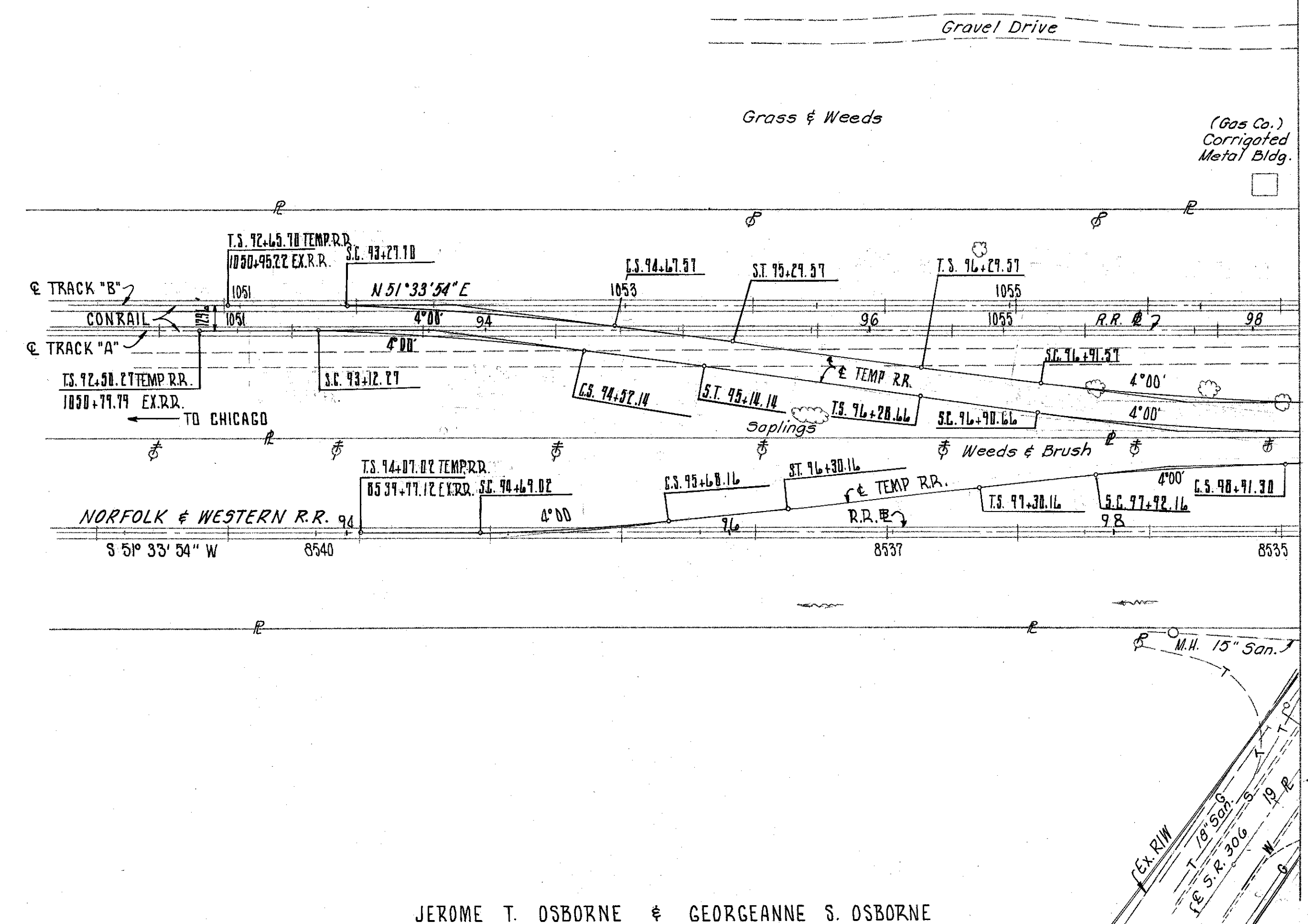


MICROFILMED  
APR 24 1984

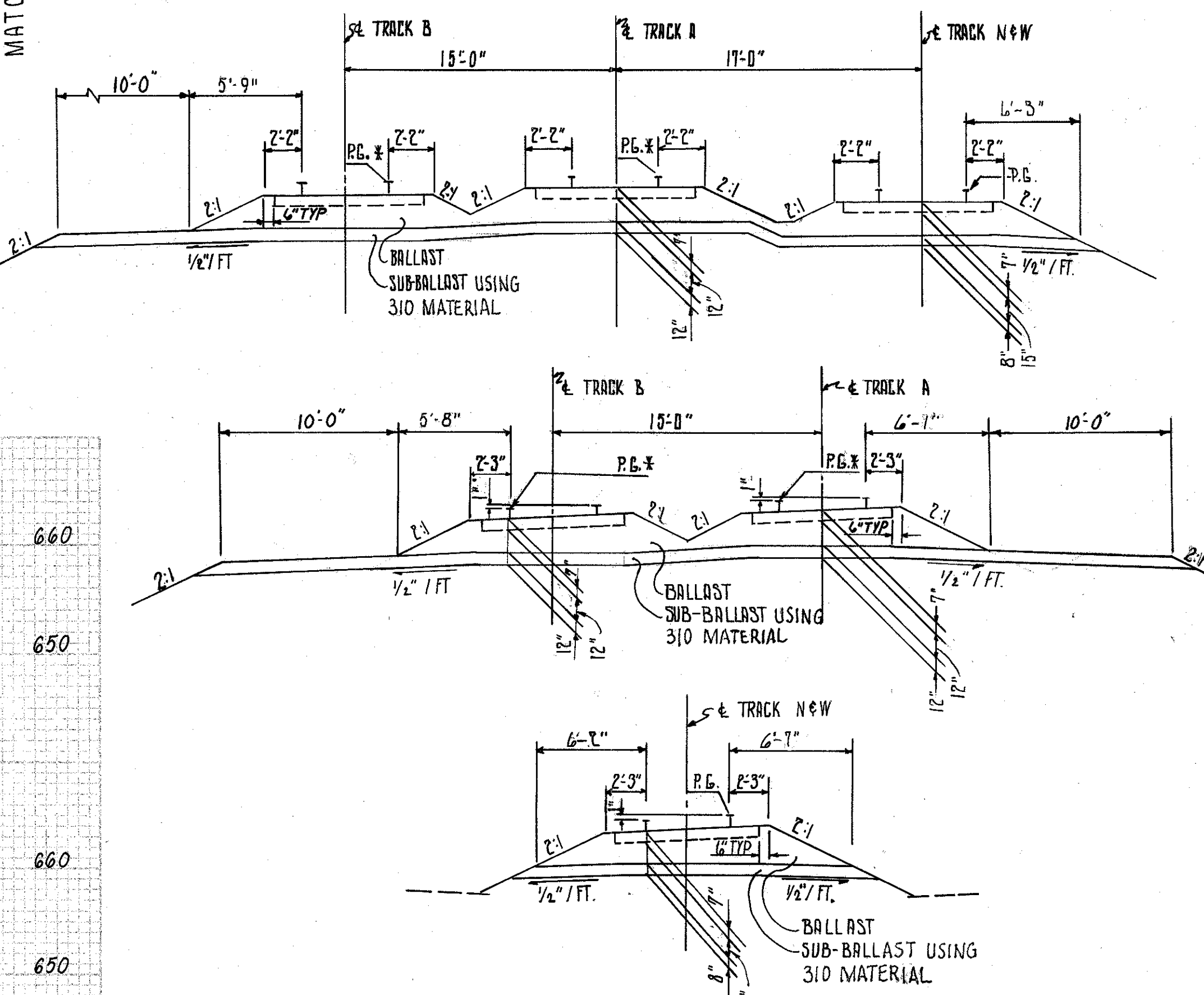


CURVE DATA N & W R.R.

TRACK A	TRACK B
PI 93+82.38	PI 95+97.81
PI 97+60.77	PI 99+61.68
$\Delta = 6^\circ 26' 44"$	$\Delta = 8^\circ 04' 29"$
$D_c = 4^\circ 00' 00"$ (HIGHWAY CURVE)	$D_c = 4^\circ 00' 00"$ (HIGHWAY CURVE)
R = 1432.39'	R = 1432.39'
L <sub>c</sub> = 99.14'	L <sub>c</sub> = 139.81'
L <sub>s</sub> = 62.00'	L <sub>s</sub> = 62.00'
$\theta_s = 1^\circ 14' 24"$	$\theta_s = 1^\circ 14' 24"$
T <sub>s</sub> = 111.66'	T <sub>s</sub> = 132.11'
LT = 41.33'	LT = 41.33'
ST = 20.67'	ST = 20.67'
E <sub>s</sub> = 2.38'	E <sub>s</sub> = 3.63'

SUPERELEVATION = 1"  
DESIGN SPEED = 30 MPH  
NOTE: PROFILE GRADE IS LOCATED ON THE LOW SIDE OF TRACK.

MATCH LINE SEE SHEET 9



JEROME T. OSBORNE & GEORGEANNE S. OSBORNE

TOP OF LEFT RAIL TEMP. TRACK "B"	657.38	657.42	657.45	657.49	657.44	657.39	657.32	657.55	657.72	657.65	657.68	657.67	657.64	657.69	657.71	657.74	657.77	657.80	660
CONRAIL R.R.																			
TOP OF RIGHT RAIL TEMP. TRACK "B"	657.41	657.42	657.43	657.44	657.41	657.39	657.38	657.51	657.54	657.57	657.60	657.63	657.64	657.69	657.74	657.82	657.85	657.88	650
EXISTING GRADE 0.02%																			
TOP OF LEFT RAIL TEMP. TRACK "A"	657.45	657.49	657.53	657.57	657.60	657.64	657.67	657.76	657.83	657.87	657.92	657.90	657.93	657.97	658.02	658.04	658.10	658.15	660
CONRAIL R.R.																			
TOP OF RIGHT RAIL TEMP. TRACK "A"	657.56	657.57	657.54	657.56	657.58	657.61	657.66	657.70	657.75	657.77	657.84	657.88	657.93	657.97	658.00	658.04	658.10	658.23	650
EXISTING GRADE 0.05%																			
TOP OF LEFT RAIL	656.66	656.73	656.80	656.85	656.91	656.98	657.06	657.04	657.00	657.07	657.12	657.15	657.17	657.20	657.23	657.29	657.37	657.40	660
NORFOLK & WESTERN R.R.																			
TOP OF RIGHT RAIL PROFILE GRADE	656.67	656.73	656.80	656.85	656.91	656.98	657.06	657.07	657.12	657.15	657.17	657.20	657.23	657.26	657.29	657.37	657.40	657.41	650
EXISTING GRADE +0.13%																			

Rev. 10-28-80