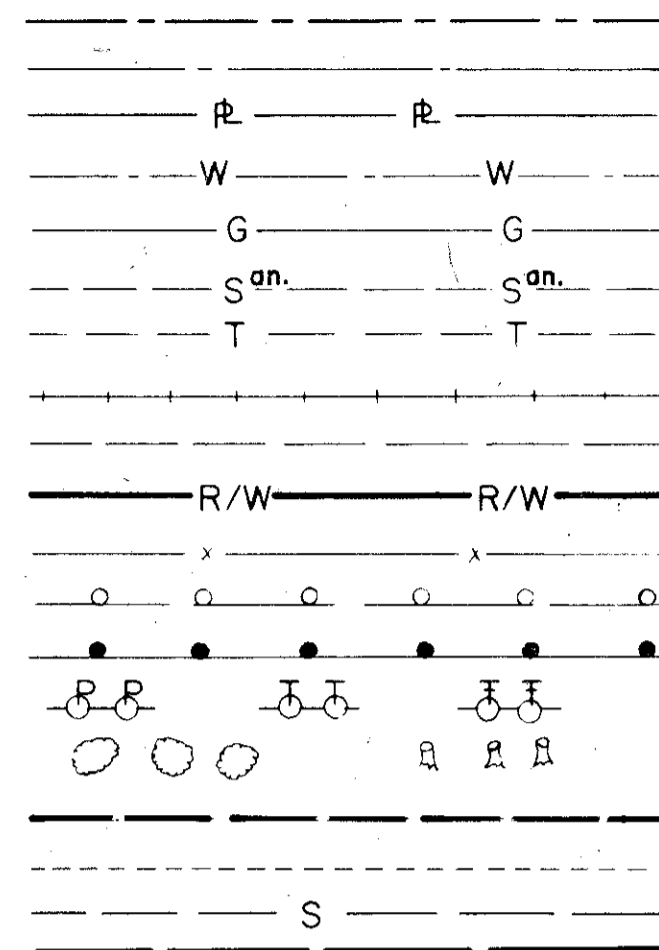


9-11 H-9

MICROFILMED
APR 24 1984

CONVENTIONAL SIGNS

- CORPORATION LINE
- CENTER LINE
- PROPERTY LINE
- EXISTING WATER LINES
- EXISTING GAS LINES
- EXISTING SANITARY SEWERS
- EXISTING UNDERGROUND TELEPHONE CONDUIT
- RAILROADS
- EXISTING RIGHT-OF-WAY
- PROPOSED RIGHT-OF-WAY
- FENCE (EXISTING)
- EXISTING GUARD RAIL
- PROPOSED GUARD RAIL
- POLE LINE (POWER, TELEPHONE, TELEGRAPH)
- EXISTING TREES, STUMPS
- TEMPORARY RIGHT-OF-WAY
- WORK LIMITS
- EXISTING STORM SEWER
- SLOPE EASEMENT



INDEX

TITLE SHEET	1
SCHEMATIC PLAN & DESIGN DESIGNATION	2
TYPICAL SECTIONS	3
GENERAL NOTES	4-5, 5A, 5B
MAINTENANCE OF TRAFFIC	6-10, 6A
CALCULATIONS	11-12
GENERAL SUMMARY	13-14
MISCELLANEOUS DETAILS	15-16
U.S. 20 PLAN & PROFILE	17-18
S.R. 306 PLAN & PROFILE	19-23
S.R. 306 CROSS SECTIONS	24-28
PAVEMENT DETAILS	29
SEWER PROFILES & QUANTITIES	30-32, 31A
PUMP STATION	33-32, 35-A-35-H+43-A
TRAFFIC CONTROL	53-60
STRUCTURES	61-84, 63A
RETAINING WALL	85-87
RIGHT-OF-WAY	89-101

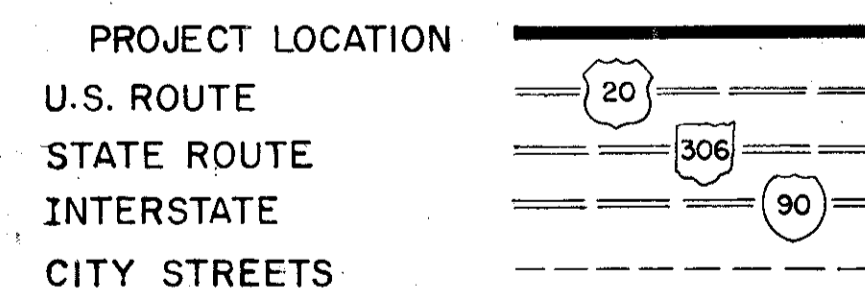
OMITTE SHEET No. 88

LINE DATA

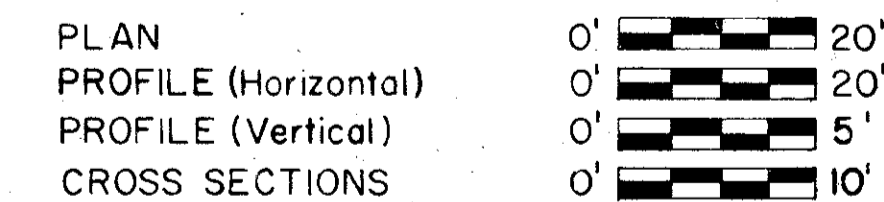
PROJECT LENGTH
S.R. 306 STA. 10+13.82 - STA. 28+00.00 = 1786.18 L.F. = 0.338 MI.

WORK LENGTH
U.S. 20 STA. 78+27.00 - STA. 84+75.00 = 648.0 L.F. = 0.123 MI.
S.R. 306 STA. 8+58.00 - STA. 29+25.00 = 2067.0 L.F. = 0.391 MI.
TOTAL LENGTH OF WORK 2715.0 L.F. = 0.514 MI.

LEGEND



SCALE

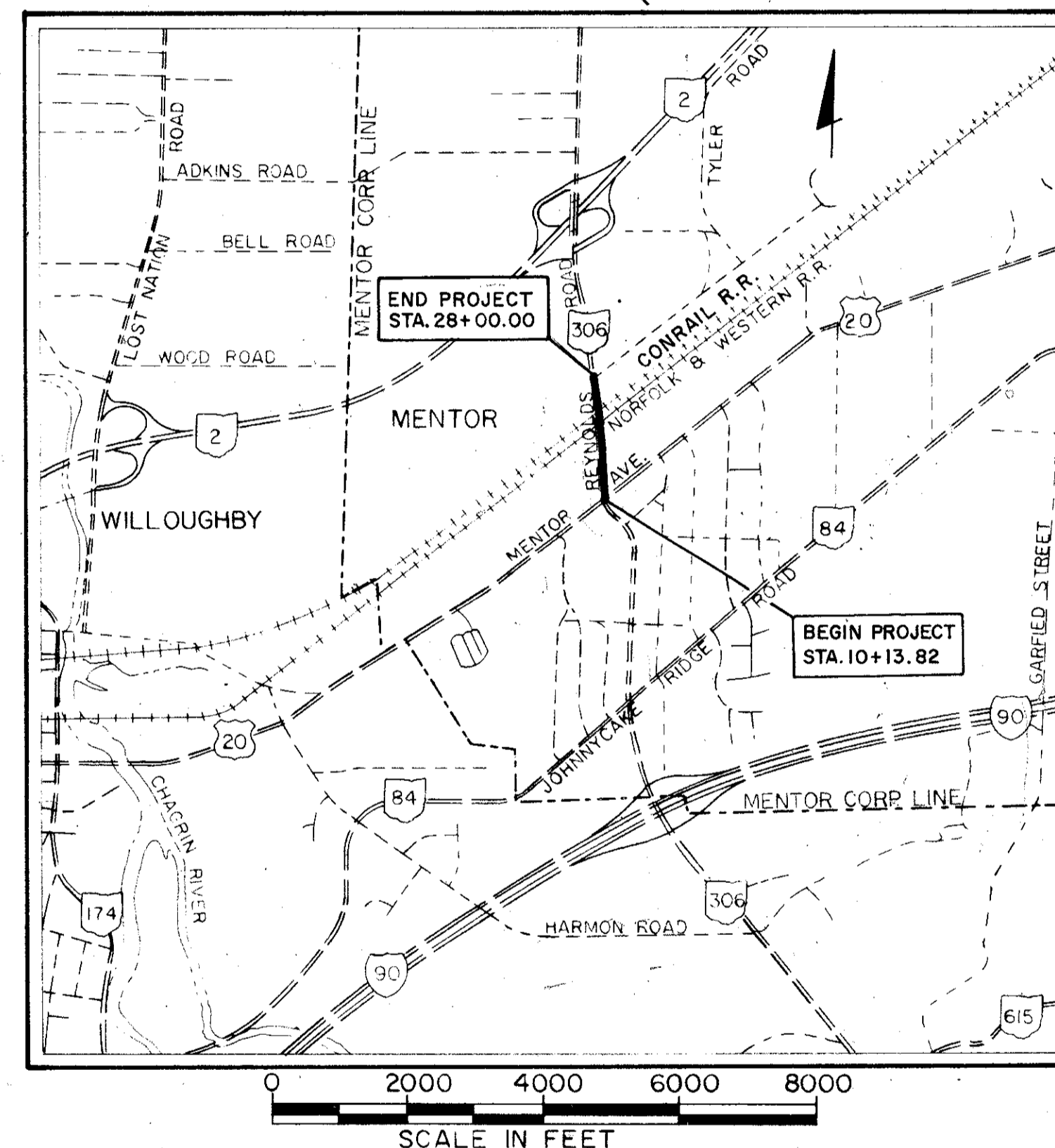


STATE OF OHIO
DEPARTMENT OF TRANSPORTATION

LAK-306-6.15

MICROFILMED
SEP 22 1987

CITY OF MENTOR
LAKE COUNTY
GRADE CROSSING ELIMINATION
CONRAIL AND NOR FOLK & WESTERN RAILWAY CO.



FHWA REGION	STATE	PROJECT	1
5	OHIO	ISSUE 1	101

LAKE COUNTY
LAK-306-6.15

ISSUE - I

1979 SPECIFICATIONS

The standard specifications of the State of Ohio, Department of Transportation including changes and supplemental specifications listed in the proposal shall govern this improvement.

I hereby approve these plans and declare that the making of this improvement will not require the closing to traffic of the highway and that provisions for the maintenance and safety of traffic will be as set forth on the Plans and Estimates.

- APPROVED John Shindler, P.E.
DATE 7/1/80 CITY ENGINEER
- APPROVED Thomas P. Hill, P.E.
DATE 6-23-80 COUNTY ENGINEER
- APPROVED Thomas M. Trull
DATE 7-23-80 DISTRICT DEPUTY DIRECTOR OF TRANSPORTATION
- APPROVED Robert B. Pfeiffer, app.
DATE 9-11-80 ENGINEER, BUREAU OF BRIDGES AND STRUCTURES
- APPROVED Howard E. Nolan
DATE 10-7-80 CHIEF ENGINEER, PLANNING AND DESIGN
- APPROVED David L. Wein
DATE 10-7-80 DIRECTOR, DEPARTMENT OF TRANSPORTATION

Sheet 83 revised 2-5-81 EBL
Sheets 85, 86 & 87 deleted, sheets 85A, 86A & 87A added. 3-27-81. C.R.D.
Sheets 64 & 65 revised 5-5-81 EBL
Sheet 77 revised 7-10-81 EBL

PREPARED AND RECOMMENDED BY
FRANKLIN CONSULTANTS INC.
CONSULTING ENGINEERS
COLUMBUS, OHIO

FILE NO. _____
DATE OF LETTING _____
CONTRACT NO. _____

STANDARD CONSTRUCTION DRAWINGS								SUPPLEMENTAL SPECS.	
DWG. NO.	DATE	DWG. NO.	DATE	DWG. NO.	DATE	DWG. NO.	DATE	DWG. NO.	DATE
BP-1	6-1-65	CB-3A	5-1-79	MC-11	8-1-78	TC-83.20	4-17-79	857	12-19-78
BP-2	12-6-76	CB-5	5-1-79	MH-1	6-12-75	TC-84.20	4-17-79	859	12-19-78
BP-3	12-6-76	CB-458A	5-1-79	MH-3	6-12-75	TC-85.10	4-18-79	957	12-19-78
BP-4	12-6-76	GR-2B	12-6-76	TC-17.10	3-1-79	TC-85.20	4-18-79	959	12-19-78
BP-5	4-16-79	GR-1	12-6-76	TC-21.20	5-31-79	TC-41.10	6-18-79	1001	1-3-77
BP-6	6-1-65	GR-4	12-6-76	TC-41.20	3-26-79	TC-52.10	4-3-79	809	1-1-71
BP-7	12-6-76	1-2A	5-1-79	TC-42.20	3-26-79	TC-52.20	4-3-79	810	1-1-71
MH-5	6-12-75	MC-1	6-13-69	TC-71.10	4-9-79	HL-10	6-1-79	836	3-12-75
BP-12	8-11-75	MC-3	6-1-73	TC-81.10	4-10-79	RB-1-55	2-2-59	927	1-1-71
CB-3	5-1-79	MC-4	7-26-76	TC-82.10	4-11-79	SD-1-69	6-12-68	847	4-3-76

00529