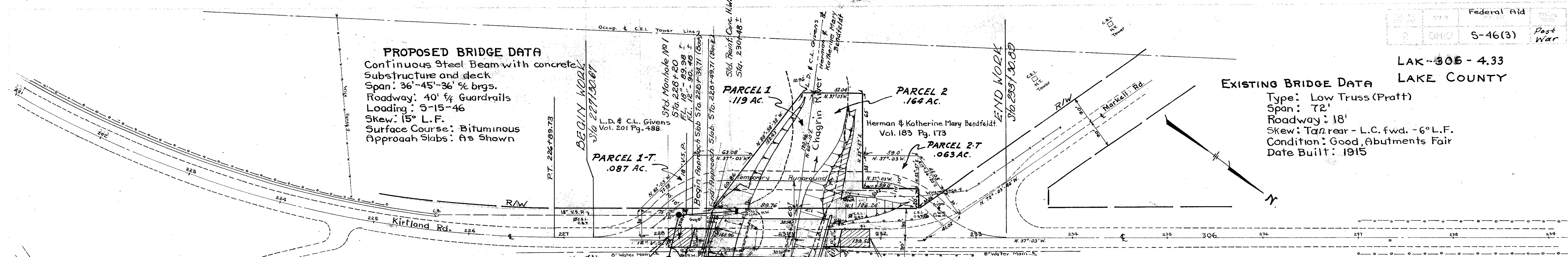


LAK-306-4.33  
 LAKE COUNTY

**PROPOSED BRIDGE DATA**  
 Continuous Steel Beam with concrete  
 Substructure and deck  
 Span: 36'-45'-36" brgs.  
 Roadway: 40' 1/4 Guardrails  
 Loading: S-15-46  
 Skew: 15° L.F.  
 Surface Course: Bituminous  
 Approach Slabs: As Shown

**EXISTING BRIDGE DATA**  
 Type: Low Truss (Pratt)  
 Span: 72'  
 Roadway: 18'  
 Skew: Tan rear - L.C. fwd. - 6° L.F.  
 Condition: Good, Abutments Fair  
 Date Built: 1915

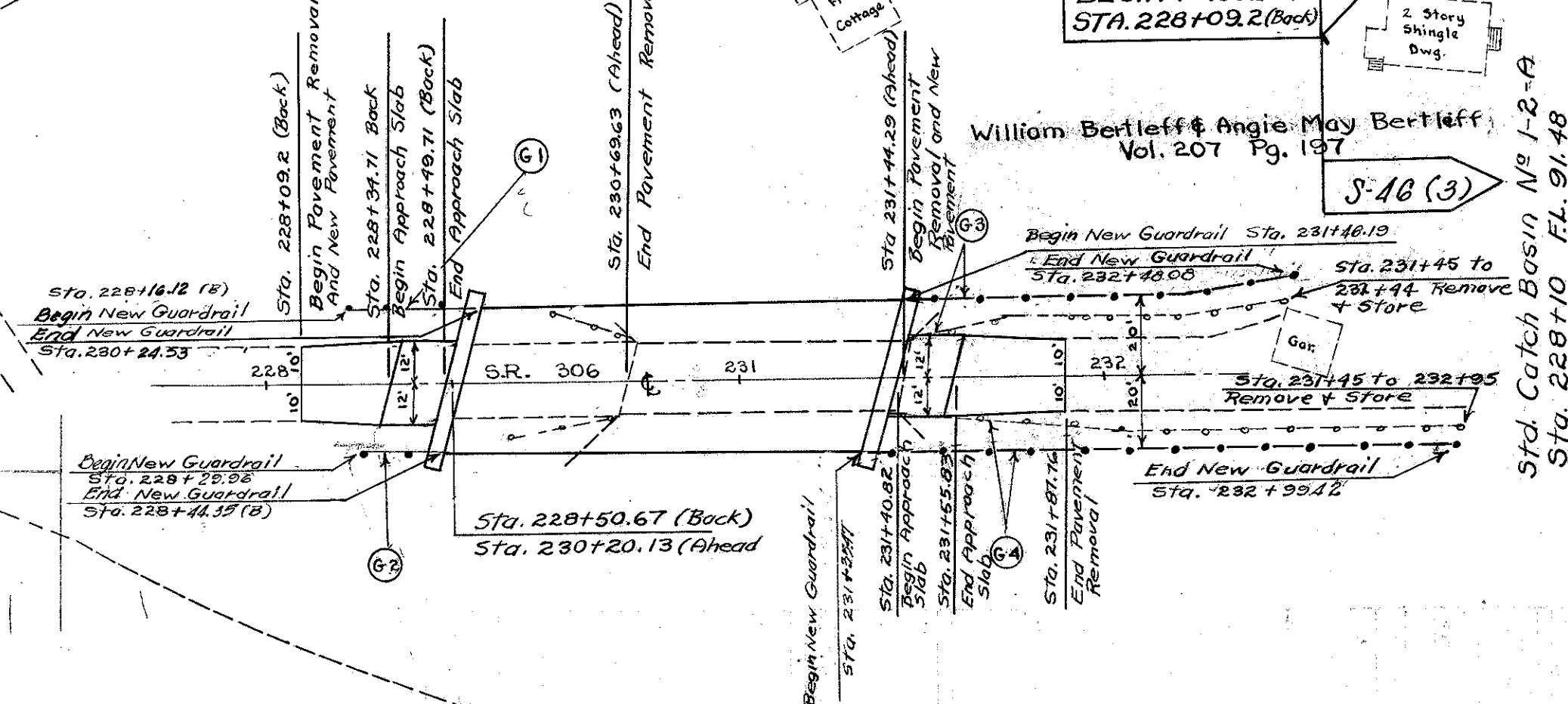


**DETAIL OF PAVEMENT  
 REMOVAL, NEW PAVEMENT  
 & GUARDRAIL** Scale: 1" = 40'

Note: Marker will be created on the Right by the State of Ohio before acceptance of this improvement.

Note: Marker will be created on the left by the State of Ohio before acceptance of this improvement.

**UTILITIES INVOLVED:-**  
 The Cleveland Electric Illuminating Co  
 The Ohio Bell Telephone Co  
 The Lake County Water Department



For Typical Section Of Adjoining Pavement See Sheet No. 2.

**ROASTORM SEWERS**

LOCATION	1-2	1-2	Standard	Standard
	12" Sewer Pipe	18" Sewer Pipe	1-2 Catch Basin	Standard No. 1 Manhole
	Lin. Ft.	Lin. Ft.	Each	Each
Sta. 228+20 (Back) to 230+10 (Ahead) Left Side		68		
Sta. 228+10 (Back) to 229+20 (Back) Right to Left	46			
Sta. 228+10 (Back)			1	
Sta. 228+20 (Back)	46			1
<b>TOTAL</b>	<b>46</b>	<b>68</b>	<b>1</b>	<b>1</b>

**\* APPROACH SLABS**

LOCATION	I-7 Reinforced Concrete Approach Slab	T-30 100k Cool @ 0.10 Gals per Sq Yd
	SQ. YDS.	Gals.
Sta. 228+54.71 (Back) to Sta. 228+54.71 (Back)	40	4
Sta. 231+40.83 (Ahead) to Sta. 231+55.83 (Ahead)	40	4
<b>TOTAL</b>	<b>80</b>	<b>8</b>

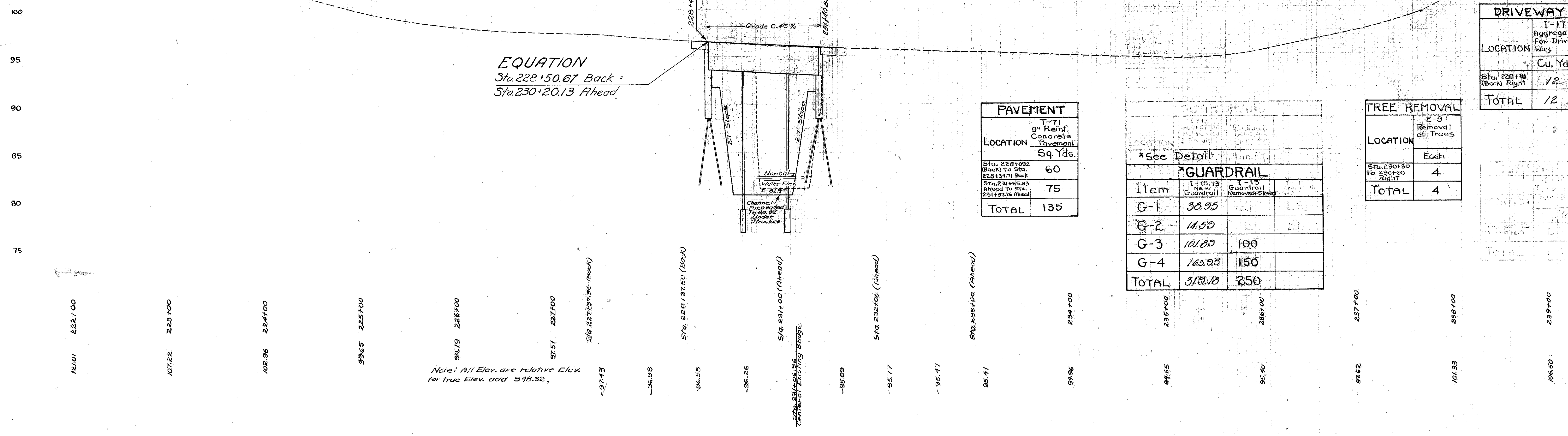
\*The Approach Slabs shall be surfaced with two 1/4" layers of T-35 Asphaltic Concrete.

**PAVEMENT REMOVAL**

LOCATION	E-6 Removal & Disposal of Existing Pavement
	Sq. Yds.
Sta. 228+09.2 (Back) to Sta. 230+02.5 (Ahead) 30' Left	204
Sta. 231+44.29 (Ahead) to Sta. 231+07.76 (Ahead)	97
<b>TOTAL</b>	<b>301</b>

**STANDARD REINFORCED CONCRETE HEADWALL**

LOCATION	S-1 Concrete For Reinf. Headwall	S-4 Reinforcing Steel for Concrete Headwall
	Cu. Yds.	Lbs.
Sta. 230+40 (Ahead) 30' Left	1	26
Sta. 231+44.29 (Ahead) to Sta. 231+07.76 (Ahead)	1	26
<b>TOTAL</b>	<b>2</b>	<b>26</b>



**EQUATION**  
 Sta. 228+50.67 Back =  
 Sta. 230+20.13 Ahead

**PAVEMENT**

LOCATION	T-71 9" Reinf. Concrete Pavement
	Sq. Yds.
Sta. 228+09.2 (Back) to Sta. 228+10 (Back)	60
Sta. 231+55.83 (Ahead) to Sta. 231+07.76 (Ahead)	75
<b>TOTAL</b>	<b>135</b>

**\* GUARDRAIL**

Item	I-15.13 New Guardrail	I-15 Guardrail Removed
	Sq. Yds.	Sq. Yds.
G-1	38.95	
G-2	14.50	
G-3	101.80	100
G-4	160.00	150
<b>TOTAL</b>	<b>315.25</b>	<b>250</b>

**TREE REMOVAL**

LOCATION	E-9 Removal of Trees
	Each
Sta. 230+30 to 230+60 Right	4
<b>TOTAL</b>	<b>4</b>

**DRIVEWAY**

LOCATION	I-11 Aggregate for Driveway
	Cu. Yds.
Sta. 228+18 (Back) Right	12
<b>TOTAL</b>	<b>12</b>

Note: All Elev. are relative Elev. for True Elev. add 548.32.