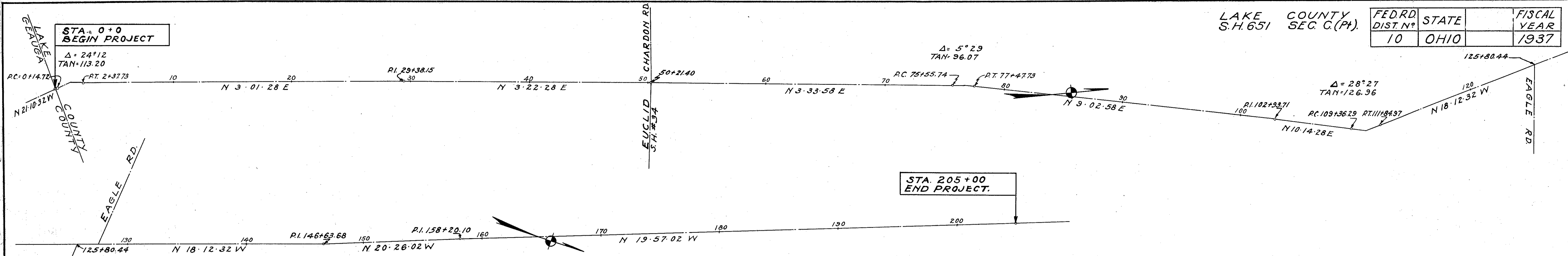


FED. RD. DIST. N <sup>o</sup>	STATE	FISCAL YEAR
10	OHIO	1937



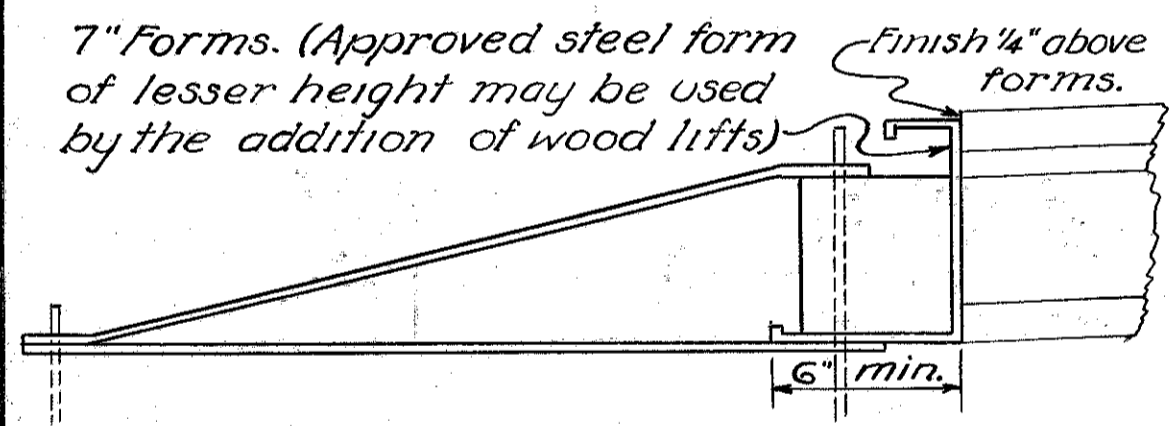
**NOTES**

Item E-10 Sealing (only) of existing pavement edge, using bituminous material at the rate of 0.25 gal. per sq. yd., Sec. M-5.7 AE-3.  
The furnishing, setting, removing and any other work incidental to the placing of steel forms as shown on the detail shall be included in the cost of pavement construction.  
Maintaining Traffic--Traffic shall be maintained at all times to the satisfaction of the Division Engineer. The item of maintaining traffic shall include the furnishing lights, signs, barricades and watchmen necessary to secure the unimpeded flow of traffic twenty-four hours daily.  
Item T-30 Bituminous prime coat of bituminous material Sec. M-5.7 AE-3 applied by distributor or by brooms at the rate of 0.25 gal. per sq. yd. and sand cover, Sec. M-2.1 uniformly spread at the rate of from 4 to 7 pounds per sq. yd. After bituminous material is applied all material not required to give a uniform coating to the surface shall be swept into all cracks and open joints before the sand cover is placed. (Payment is included in price bid per gallon for bituminous material).

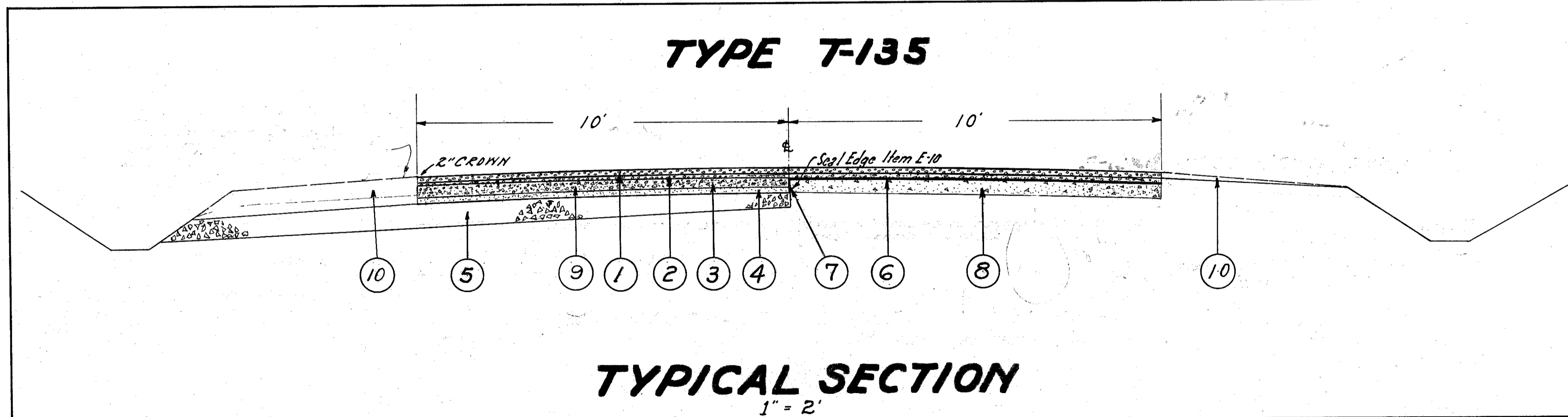
Hot mixed, hot laid asphalt mat surface and leveling courses shall be spread and finished with self-powered bituminous pavers with screeds controlled by attachments riding upon the form on the side where a form is used.  
The excavation quantity shown herewith is an estimated amount. Complete cross-sections will be available in the Division Engineers office. Earth work quantities will be paid for on final measurements. Watering embankments as referred to in paragraph E-1.05 of the General Specifications will not be required on this project.

**ALIGNMENT & IMPROVEMENT**

**TYPE T-135**

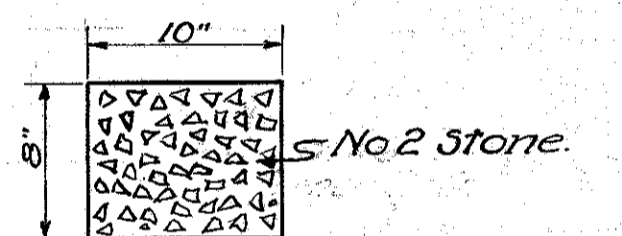


DETAIL OF REQUIRED METHOD OF FORMING & BRACING WIDENED SIDE



**TYPICAL SECTION**

1" = 2'



DETAIL OF CROSS SECTION OF NO. 2 STONE UNDERDRAIN

**CALCULATIONS**

Net length of project	20500 Lin. Ft.	or 3.882 Miles
T-135 1/4" hot mixed, hot laid asphalt mat surface course.	20500 x 20 ÷ 9 =	45,555.5
Use		45,556 Sq. Yds.
B-135 3/4" hot mixed, hot laid asphalt mat leveling course.	20500 x 20 x 3/4 ÷ 27 =	949.07
Extra leveling course @ 50 Cu. Yds. per mi. =	194.10	
Total leveling course	1143.17	
Use		1144 Cu. Yds.
B-135 4" hot mixed, hot laid asphalt mat base course	20500 x 10 x 1/2 ÷ 27 =	2530.8
Use		2531 Cu. Yds.
B-11 1" Insulation course.	20500 x 10 ÷ 9 =	22,777.7
Use		22,778 Sq. Yds.
I-9 No 2 Stone underdrain - using No 2 Stone	20500 x 16 ÷ 200 =	1640
Use		1650 Lin. Ft.
T-30 Bituminous prime coat.	20500 x 10 ÷ 9 =	22,777.7 x 0.25 =
Use		5694.4
E-1 Roadway excavation (Unclassified) Estimated.		1,916 Cu. Yds.
E-4 Borrow (Contractor to furnish) Estimated		971 Cu. Yds.

- ① Item T-135 1/4" hot mixed, hot laid asphalt mat surface course. Type A
- ② Item B-135 3/4" hot mixed, hot laid asphalt mat leveling course.
- ③ Item B-135 4" hot mixed, hot laid asphalt mat base course.
- ④ Item B-11 1" Insulation course.
- ⑤ Item I-9 No 2 Stone underdrain using No 2 stone.
- ⑥ Item T-30 Bituminous prime coat.
- ⑦ Item E-10 Seal (only) edge of existing pavement.
- ⑧ Existing 6" concrete pavement.
- ⑨ Existing Subgrade 3" to 4" Bank gravel.
- ⑩ Borrow plus excavated material shall be spread and compacted on the berms to the width designated by the Engineer.

**SUMMARY OF QUANTITIES**

ROADWAY			
E-1	1916	CUBIC YARDS	ROADWAY EXCAVATION UNCLASSIFIED
E-4	971	CUBIC YARDS	BORROW
T-135	45,556	SQUARE YARDS	HOT MIX, HOT LAID ASPHALT MAT SURFACE COURSE, TYPE-A
B-135	1144	CUBIC YARDS	" " " " " " " " LEVELING COURSE
B-135	2531	" " " " " " " " " " " " " " BASE COURSE	
B-11	22,778	SQ. YDS.	1" INSULATION COURSE.
I-9	1650	Lin. Ft.	10" x 8" STONE UNDERDRAIN NO. 2 AS PER PLAN
E-10	20,500	Lin. Ft.	Sealing only of Existing Pavement edge.
T-30	5695	GALS.	BITUMINOUS PRIME COAT. (Sec. M-5.7 AE-3)
LUMP MAINTAINING TRAFFIC.			