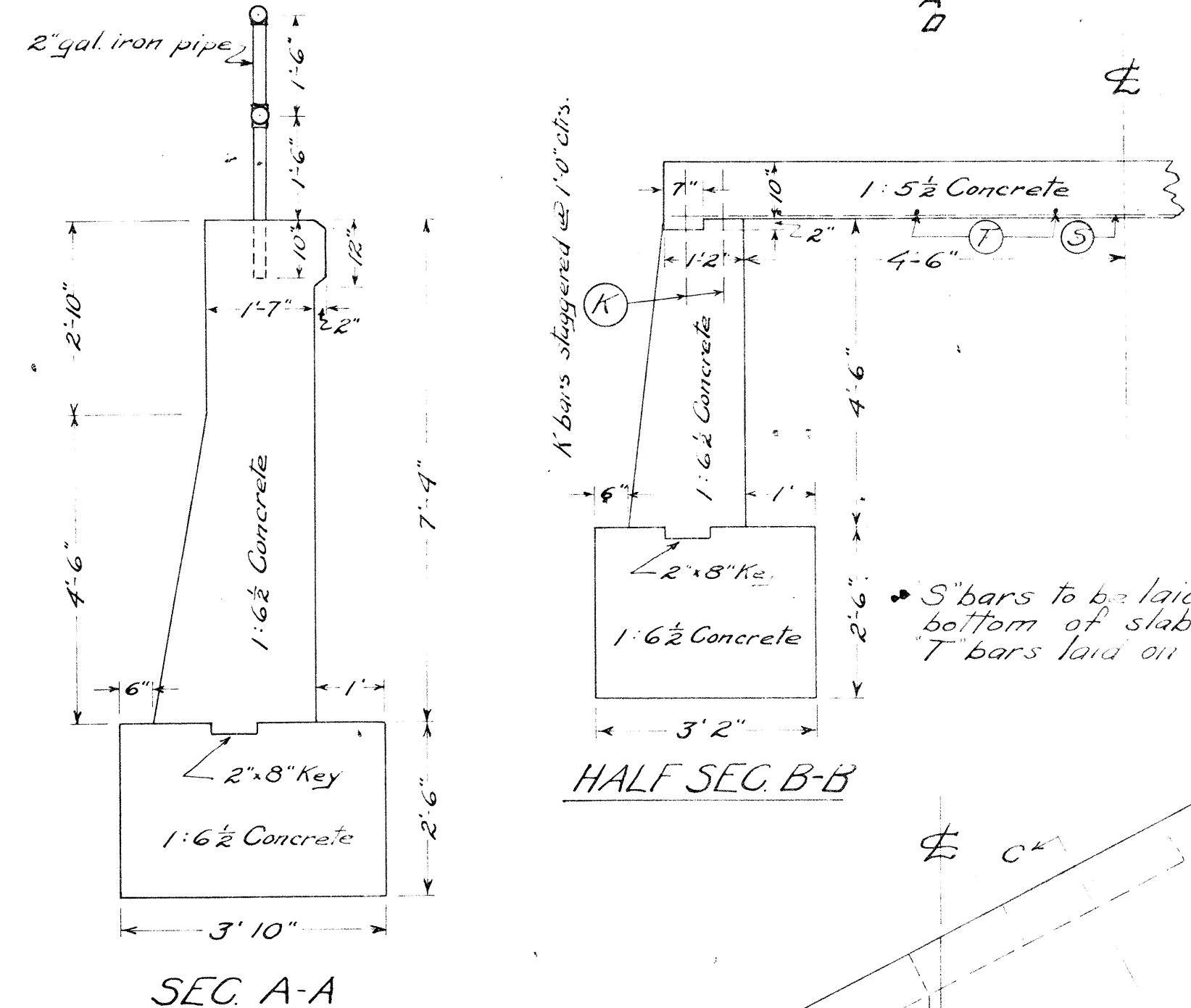


ELEVATION

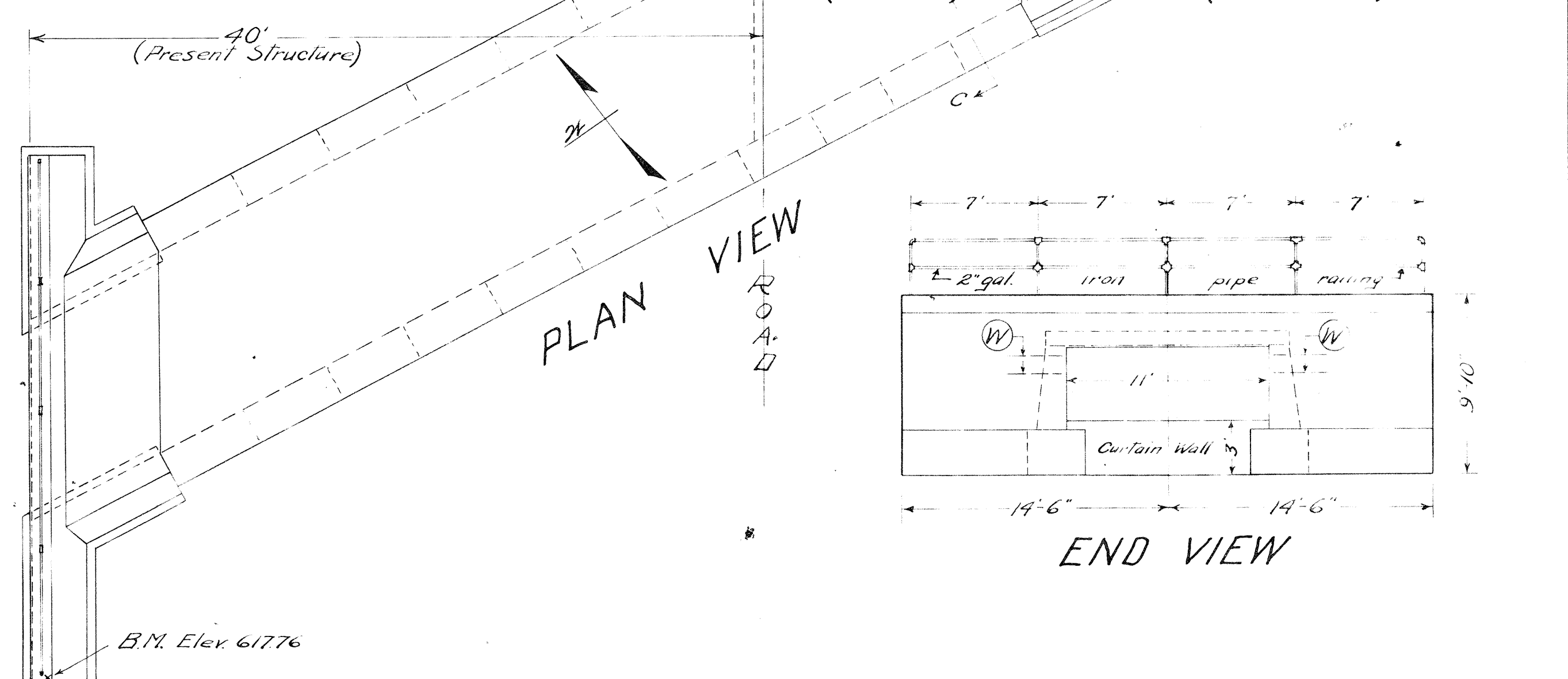


SEC. A-A

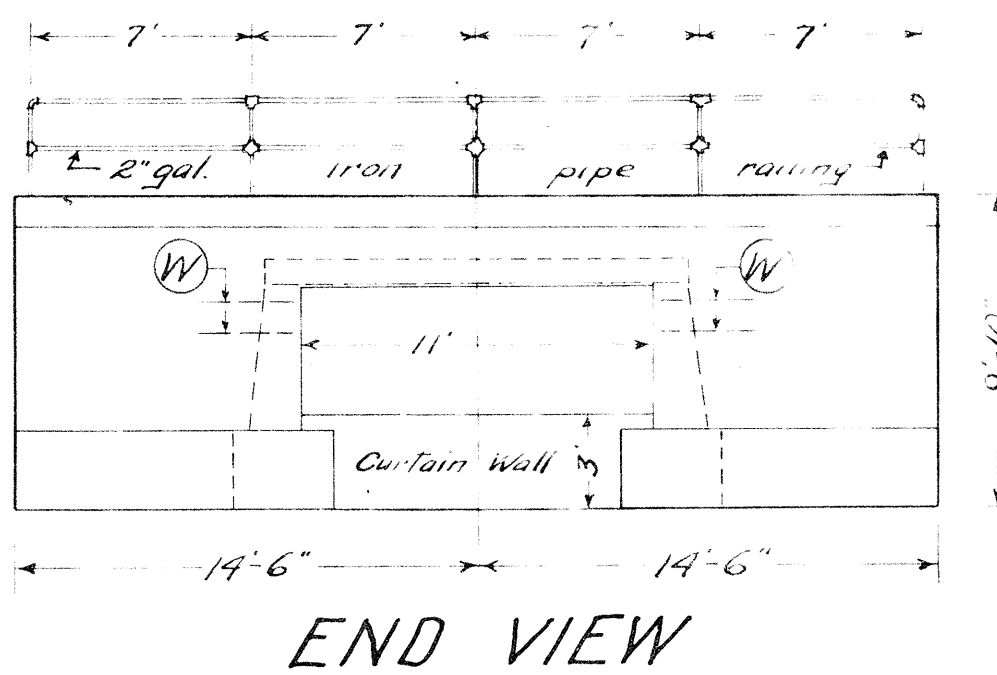
HALF SEC. B-B

HALF SEC. C-C

S bars to be laid 1" from bottom of slab.  
T bars laid on S bars.



PLAN VIEW



END VIEW

STEEL LIST					
Bars	Size	Length	Spacing	No	Weight
S	1/2" φ	14'-0"	5 3/4" ctrs.	60	171.0
T	1/2" φ	46'-0"	2'-0" ctrs.	6	20.44
K	3/8" φ	2'-0"	1'-0" ctrs.	55	114.7
W	3/4" φ	6'-0"		8	72.1
Total Weight					2108.2

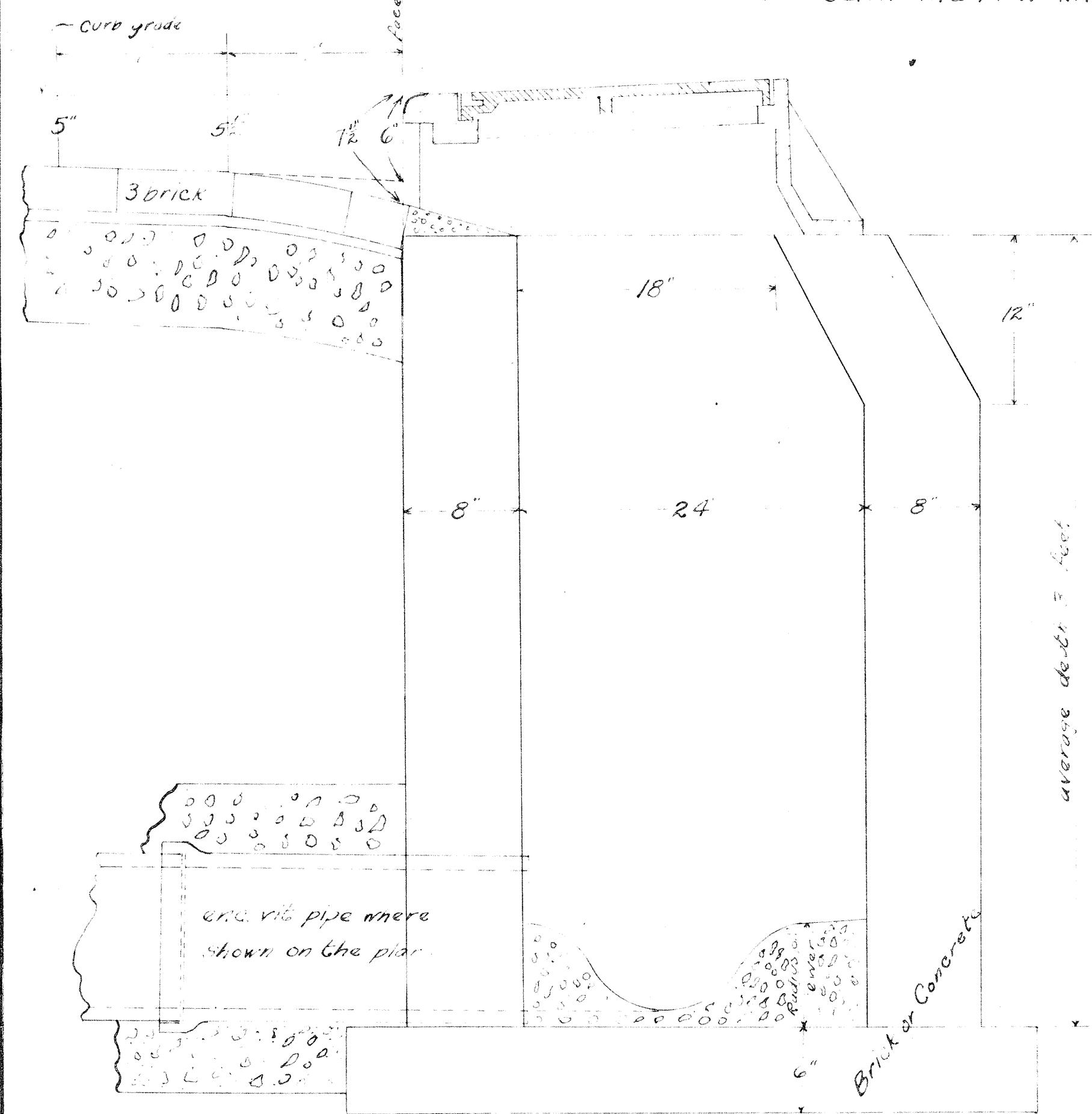
SUMMARY OF QUANTITIES

Excavation (dry)	240	Cu Yds
Excavation (wet)	26.8	Cu Yds
1-5/2 Concrete	15.9	Cu Yds
1-6/2 Concrete (walls)	24.5	Cu Yds
Steel reinforcing	2108.2	Lbs.
2" Galv. iron pipe railing	25	Lin. Ft.
Removing top course of stone walls	34	Lin. Ft.
1-6/2 Concrete (footings)	22.5	Cu Yds.

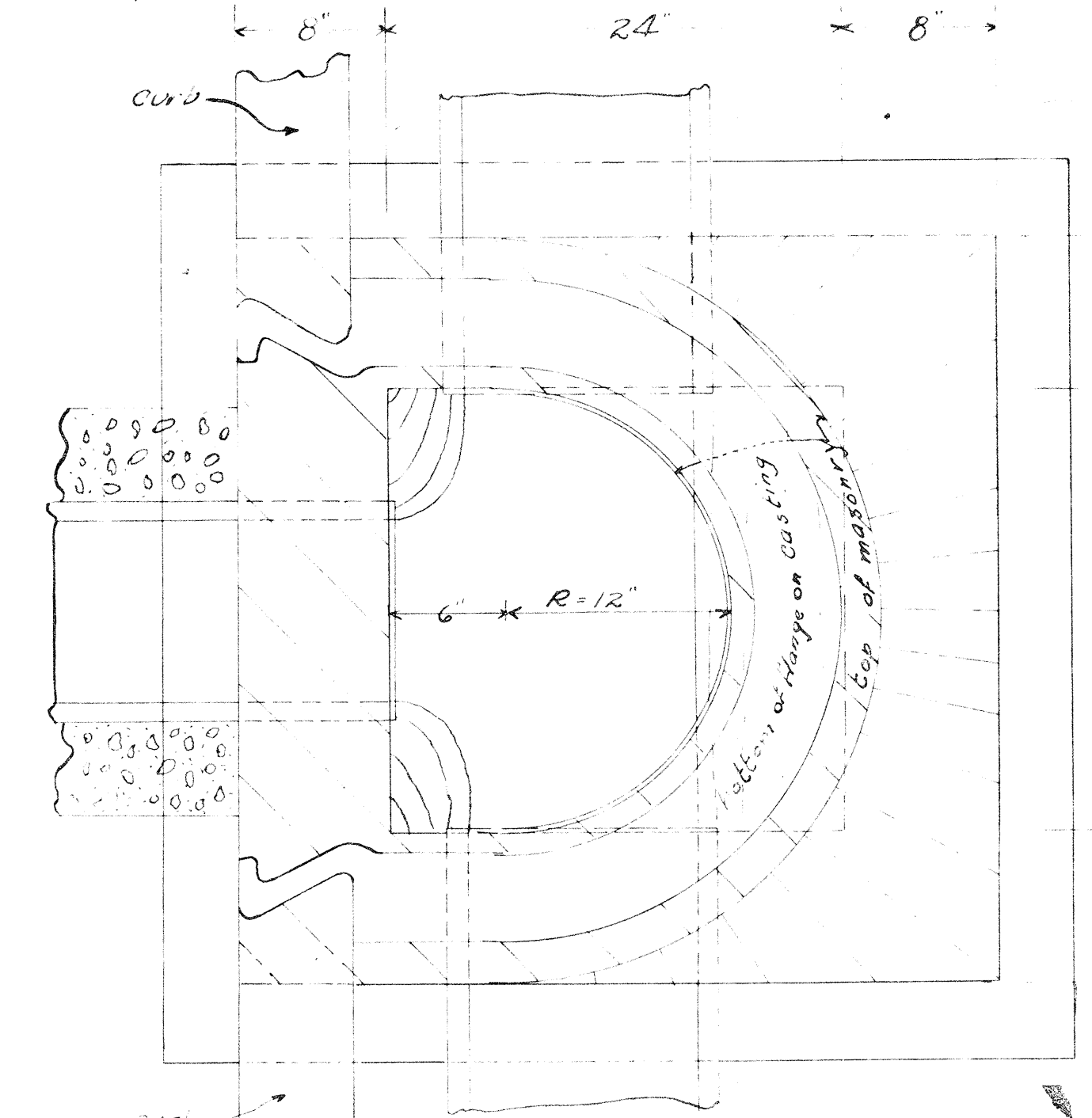
NOTE: 1 cu. yd. of 1-6/2 conc. figured on stone walls.

CULVERT EXTENSION STA. 28+54

CATCH BASINS were shown on the plan are to be the same as the inlet basins but with the bottom of the catch basins 2'-0" below the flow line of the sewer.

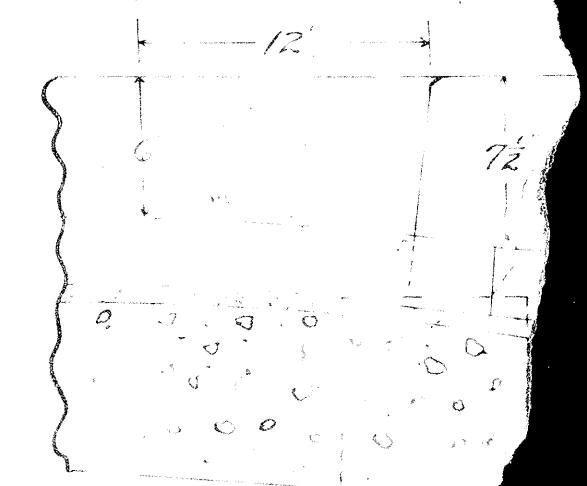


SECTION OF STANDARD INLET BASIN



PLAN OF INLET BASIN.

PLAN OF STANDARD INLET BASIN



DET.