

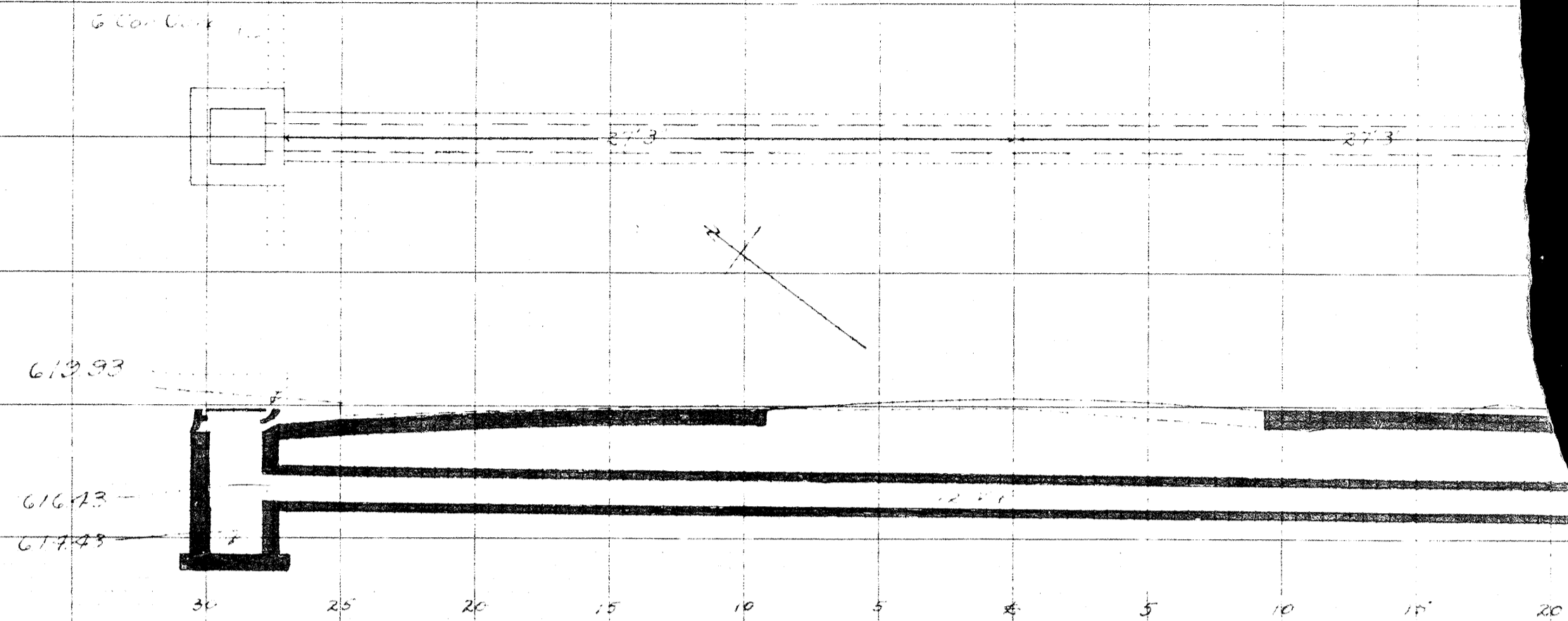
**CULVERT DATA**

Type: Std. V.S.P. Culvert Dr #300  
 Size: 12'x56'  
 Work Req: Build C.B. on L, I.B. on R  
 Connect with 12" enc. Culvert  
 Drawn by: Plummer & Beebe  
 Date:

**EST QUANTITIES**

Exc 21.6  
 Con 1-8 59  
 12" V.P. 56'

Sta 46+50



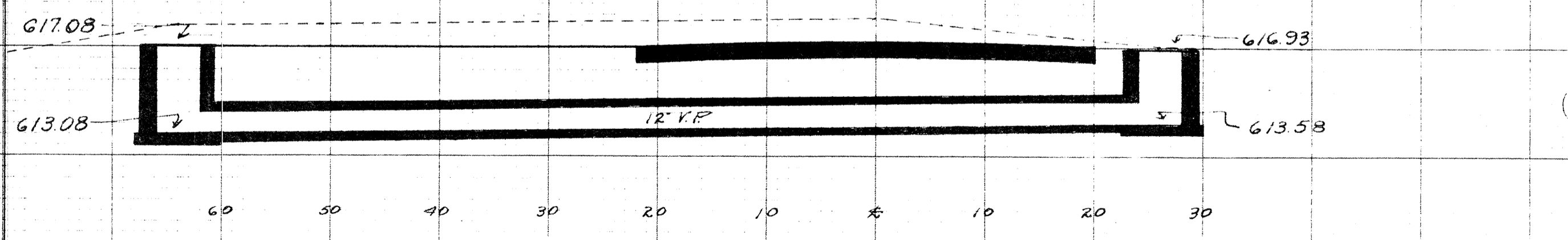
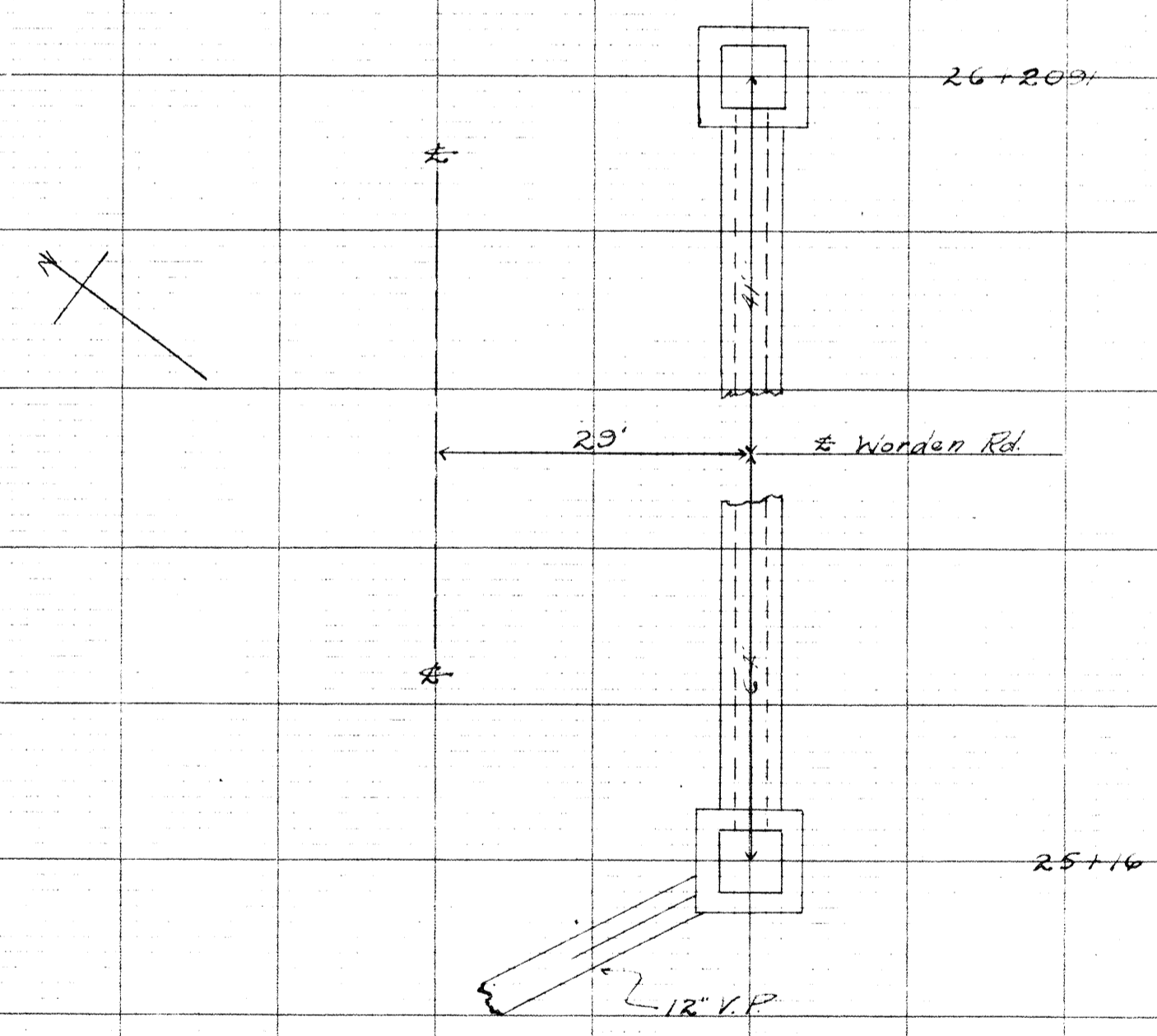
**CULVERT DATA**

Type: Std V.S.P. Culvert Dr #300  
 Size: 12'x56'  
 Work Req: Build C.B. on L, I.B. on R  
 Connect with 12" enc. culv  
 Drawn by: Plummer & Beebe  
 Date:

**EST QUANTITIES**

Exc  
 Con 1-8  
 12" V.P.

Sta 30+0



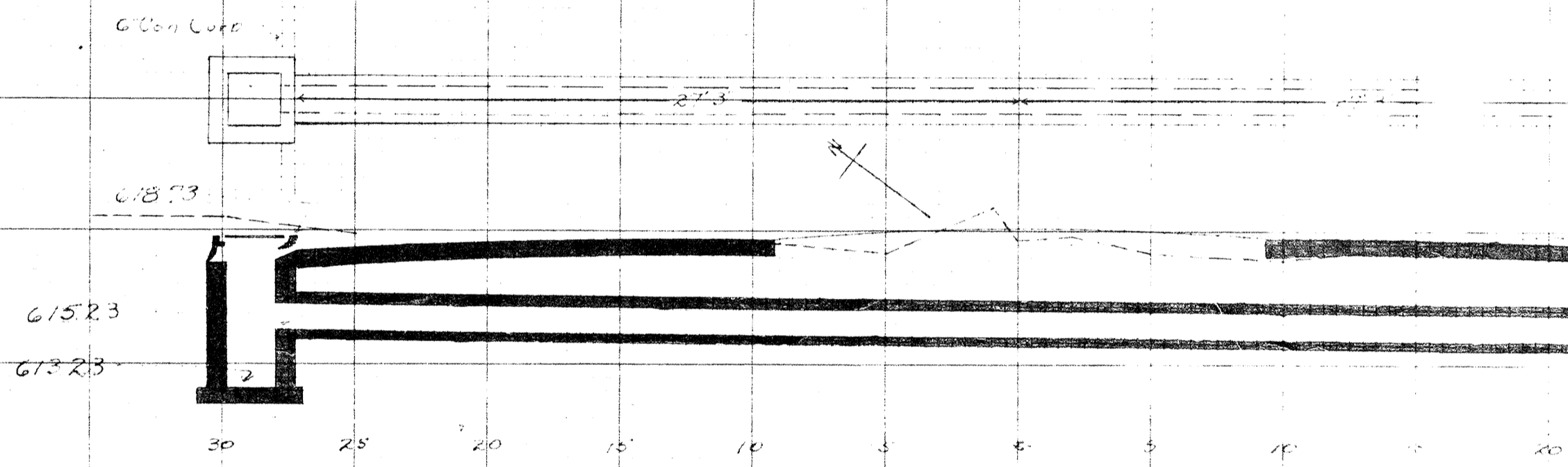
**CULVERT DATA**

Type: Std side road V.S.P. culv Dr #300  
 Size: 12'x106'  
 Work Req: Build std V.S.P. side culvert 290' R of E  
 Build I.B. on R end, On L connect to I.B. at Sta 25+16  
 Drawn by: Plummer & Beebe  
 Date:

**EST QUANTITIES**

Exc 334  
 Con 1-8 94  
 12" V.P. 106'

Sta 25+16 to 26+20.0



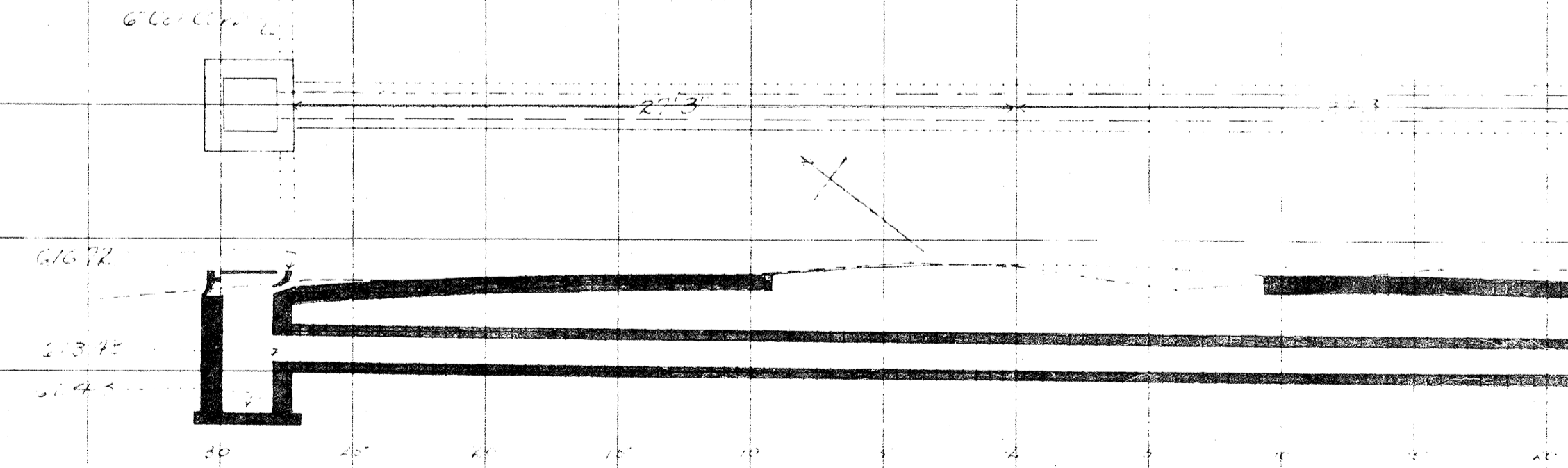
**CULVERT DATA**

Type: Std V.S.P. side culv Dr #300  
 Size: 12'x56'  
 Work Req: Build C.B. on L, I.B. on R  
 Connect with 12" enc. culv  
 Drawn by: Plummer & Beebe  
 Date:

**EST QUANTITIES**

Exc  
 Con 1-8  
 12" V.P.

Sta 30+0



**CULVERT DATA**

Type: Std V.S.P. side culvert Dr #300  
 Size: 12'x56'  
 Work Req: Build C.B. on L, I.B. on R  
 Connect with 12" enc. culv  
 Drawn by: Plummer & Beebe  
 Date:

**EST QUANTITIES**

Exc  
 Con 1-8  
 12" V.P.

Sta 30+0