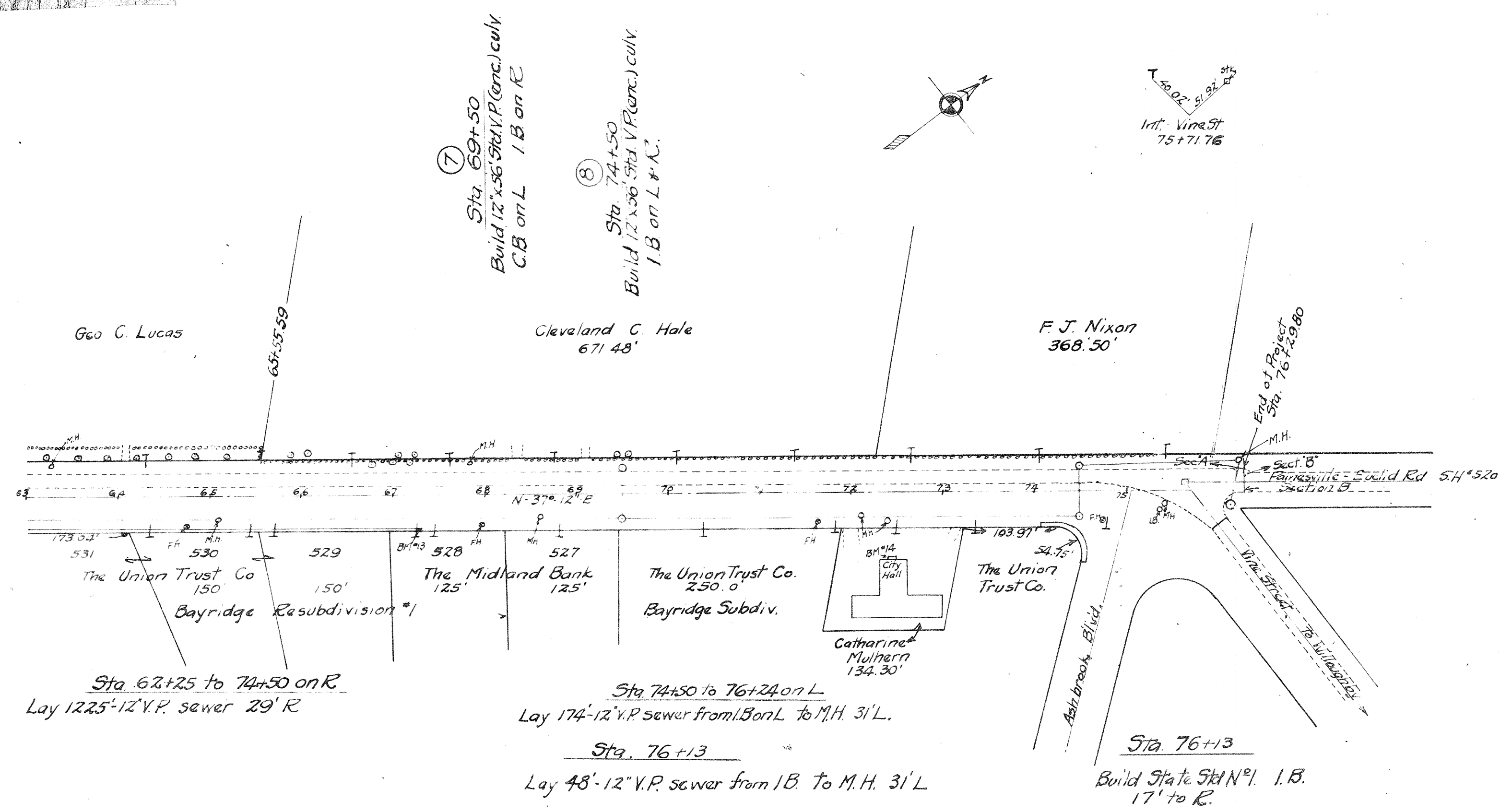


DATE
 SURVEYED
 PLOTTED
 CHECKED
 BY

DATE
 SURVEYED
 PLOTTED
 CHECKED
 BY



Sta 62+25 to 74+50 on R.
 Lay 12.25'-12" V.P. sewer 29" R

Sta 74+50 to 76+24 on L.
 Lay 17.4'-12" V.P. sewer from 15 on L to M.H. 31' L.

Sta 76+13
 Lay 48'-12" V.P. sewer from 1B to M.H. 31' L.

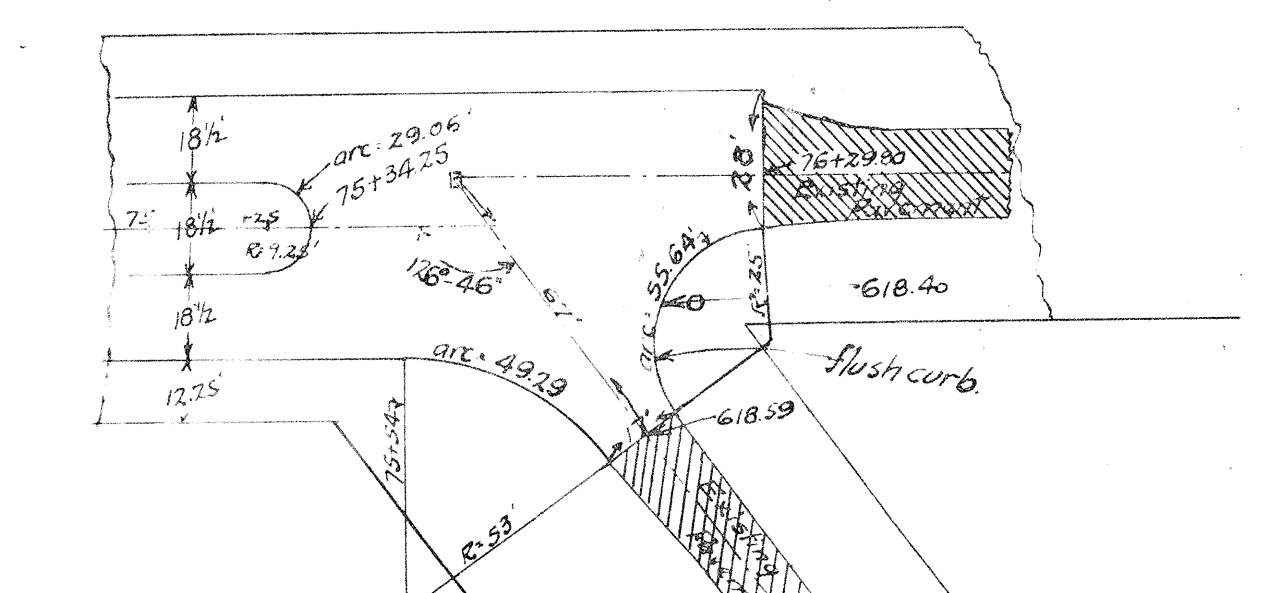
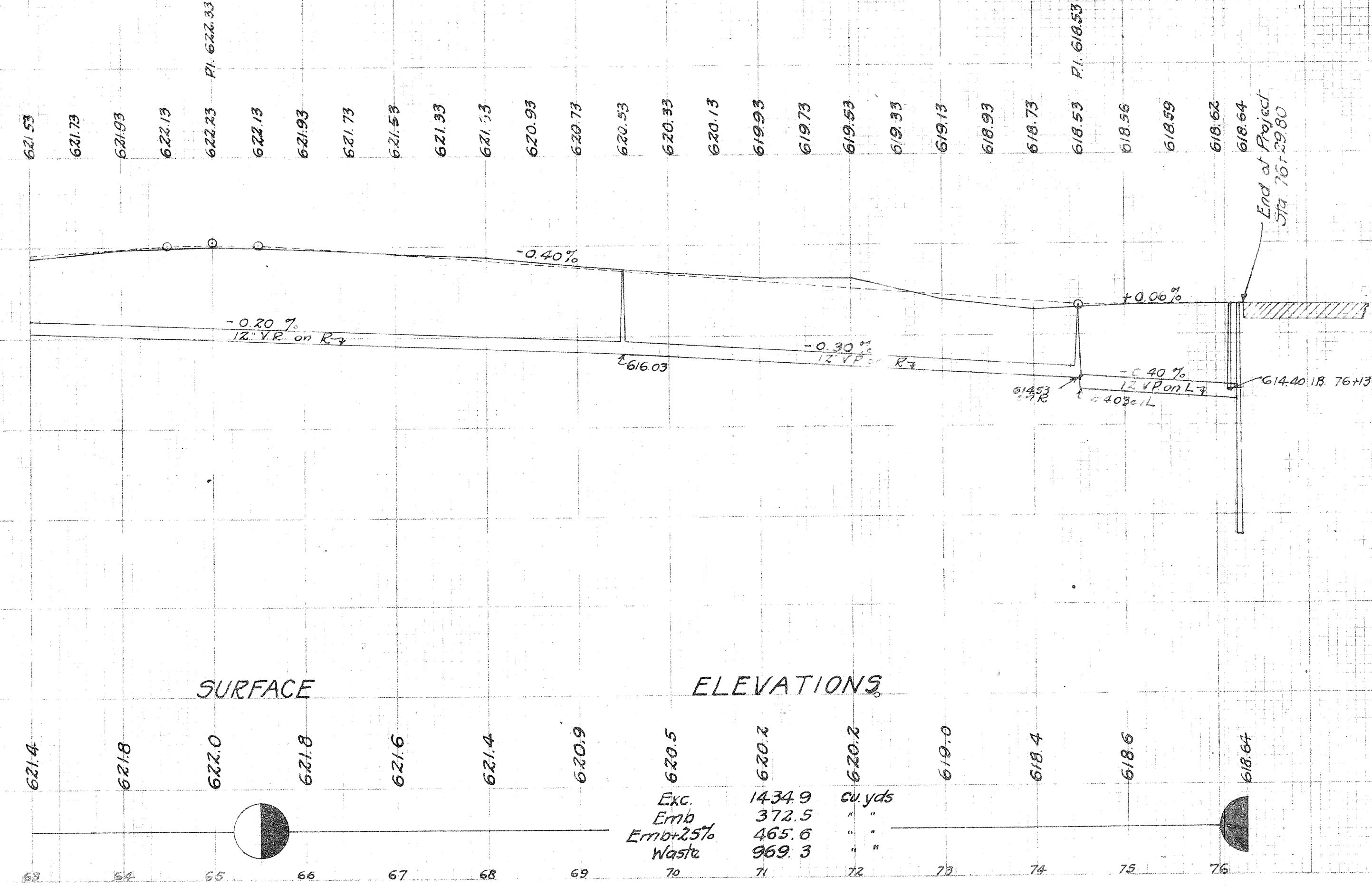
Sta 76+13
 Build State SH N^o. 1.B.
 17' to R.

BM #13 Sta 67+31
 x NE. cor. con. walk
 34' R. Elev. 621.79

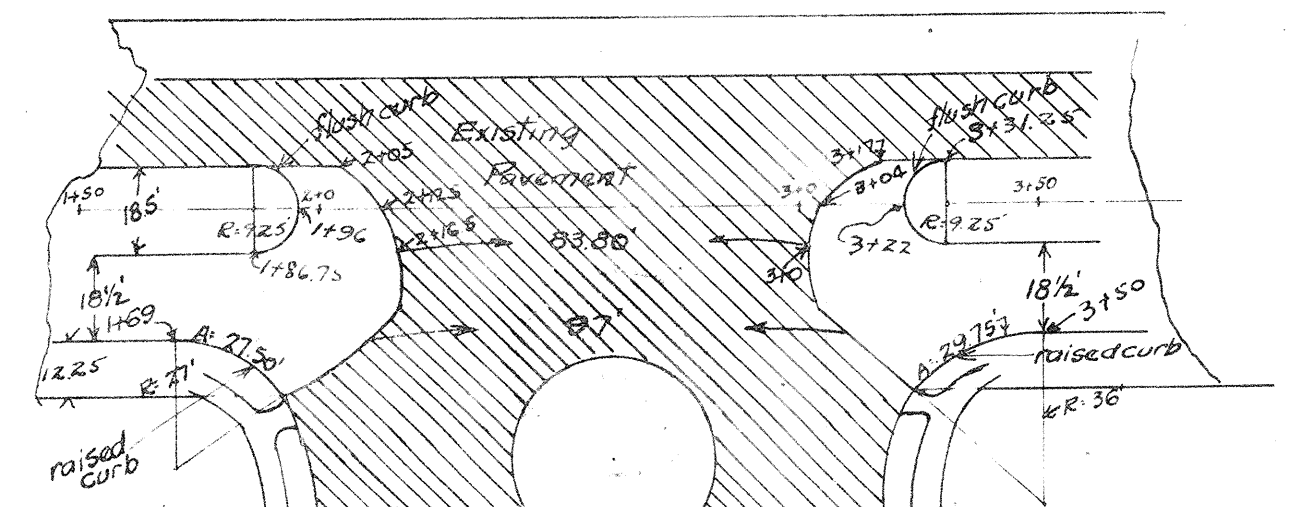
BM #14 Sta 72+45
 Knob N.W. cor. Step at City Hall
 85' R Elev. 622.68

Note: Vertical Scale of Profile 1" = 5'

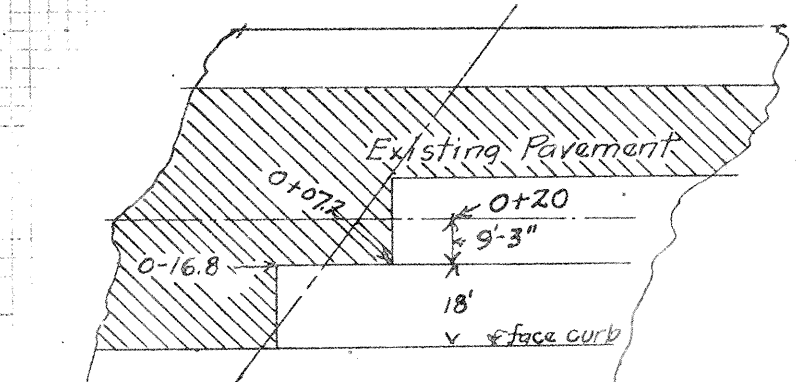
Note: Grade lines shown is top of raised curb



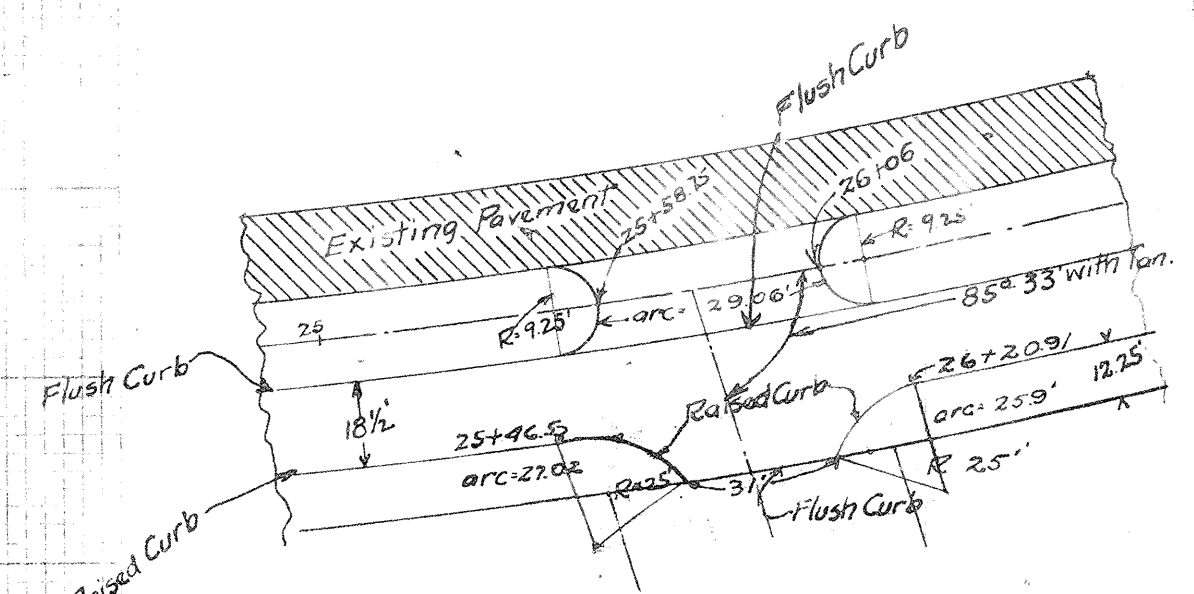
Detail of Intersection at Vine St.
 Sta. 75+25 to end
 Type "C"
 Add 196.7 sqyds. conc. pave
 Deduct 26.5 lin. ft. 6"x6" raised curb
 Type "B"
 Add 196.7 sqyds. conc. base
 Deduct 26.5 lin. ft. 6"x9 3/4" raised curb
 Deduct 123.9 lin. ft. 12"x3 3/4" flush curb



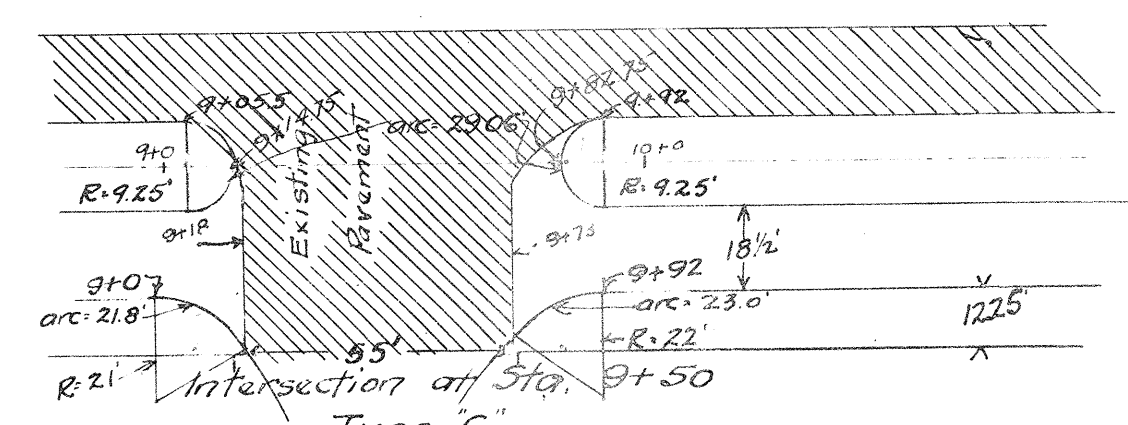
Intersection at Sta. 24+0
 Type "C"
 Deduct 57.1 sqyds. conc. pave
 Deduct 12.8 lin. ft. 6"x6" raised curb
 Type "B"
 Deduct 57.1 sqyds. conc. base
 Deduct 12.8 lin. ft. 6"x9 3/4" raised curb
 Deduct 87.0 lin. ft. 12"x3 3/4" flush curb



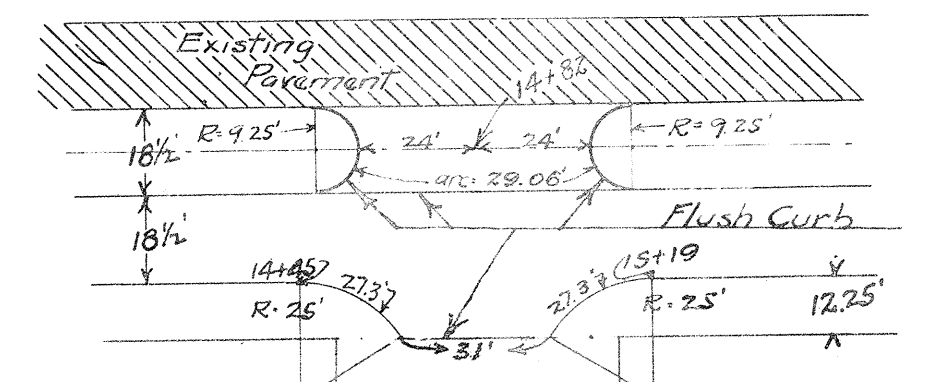
Detail 0+16.8 to 0+20 inc.



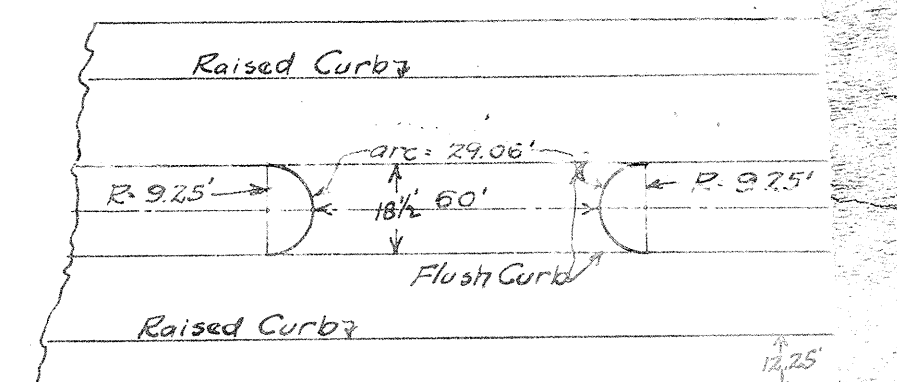
Intersection at 25+78.60
 Type "C"
 Add 196.0 sqyds. conc. pave
 Deduct 21.5 lin. ft. 6"x6" raised curb
 Type "B"
 Add 196.0 sqyds. conc. base
 Deduct 21.5 lin. ft. 6"x9 3/4" raised curb
 Add 89 lin. ft. 12"x3 3/4" flush curb



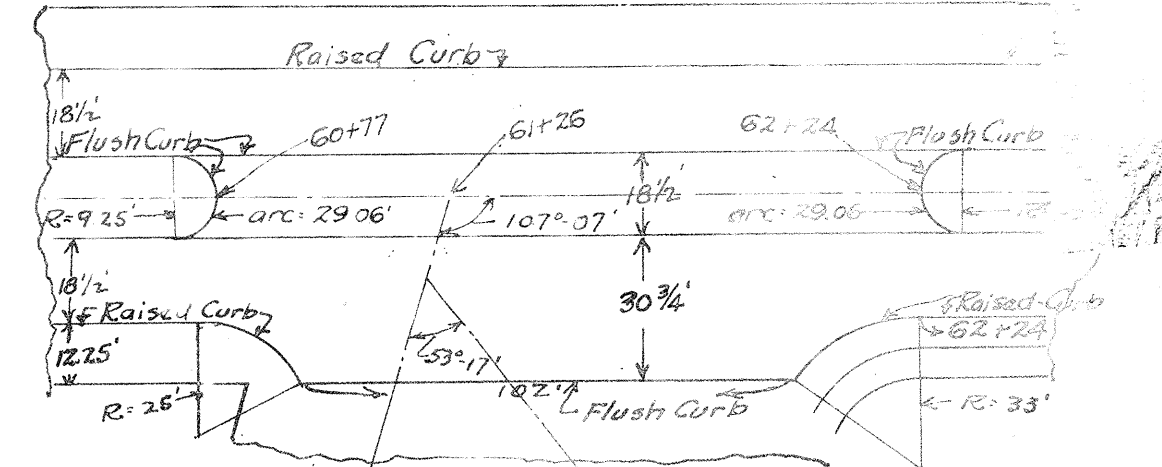
Intersection at Sta. 27+50
 Type "C"
 Deduct 77.3 sqyds. conc. pave
 Deduct 47.2 lin. ft. 6"x6" raised curb
 Type "B"
 Deduct 77.3 sqyds. conc. base
 Deduct 47.2 lin. ft. 6"x9 3/4" raised curb
 Deduct 28.5 lin. ft. 12"x3 3/4" flush curb



Intersection at Sta. 14+82
 Type "C"
 Add 166.7 sqyds. conc. pave
 Deduct 20.0 lin. ft. 6"x6" raised curb
 Type "B"
 Add 166.7 sqyds. conc. base
 Deduct 20.0 lin. ft. 6"x9 3/4" raised curb
 Add 89.0 lin. ft. 12"x3 3/4" flush curb



Island at Sta. 72+95
 Type "C"
 Add 131.6 sqyds. conc. pave
 Type "B"
 Add 131.6 sqyds. conc. base
 Add 58.0 lin. ft. 12"x3 3/4" flush curb



Intersection at Sta. 61+50
 Type "C"
 Add 469.0 sqyds. conc. pave
 Deduct 93.9 lin. ft. 6"x6" raised curb
 Type "B"
 Add 469.0 sqyds. conc. base
 Deduct 93.9 lin. ft. 6"x9 3/4" raised curb
 Add 160.2 lin. ft. 12"x3 3/4" flush curb