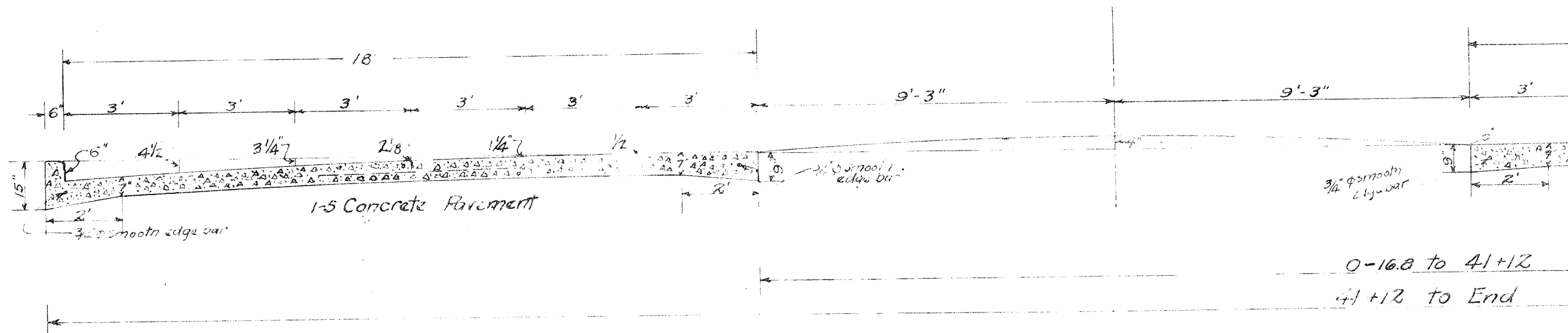
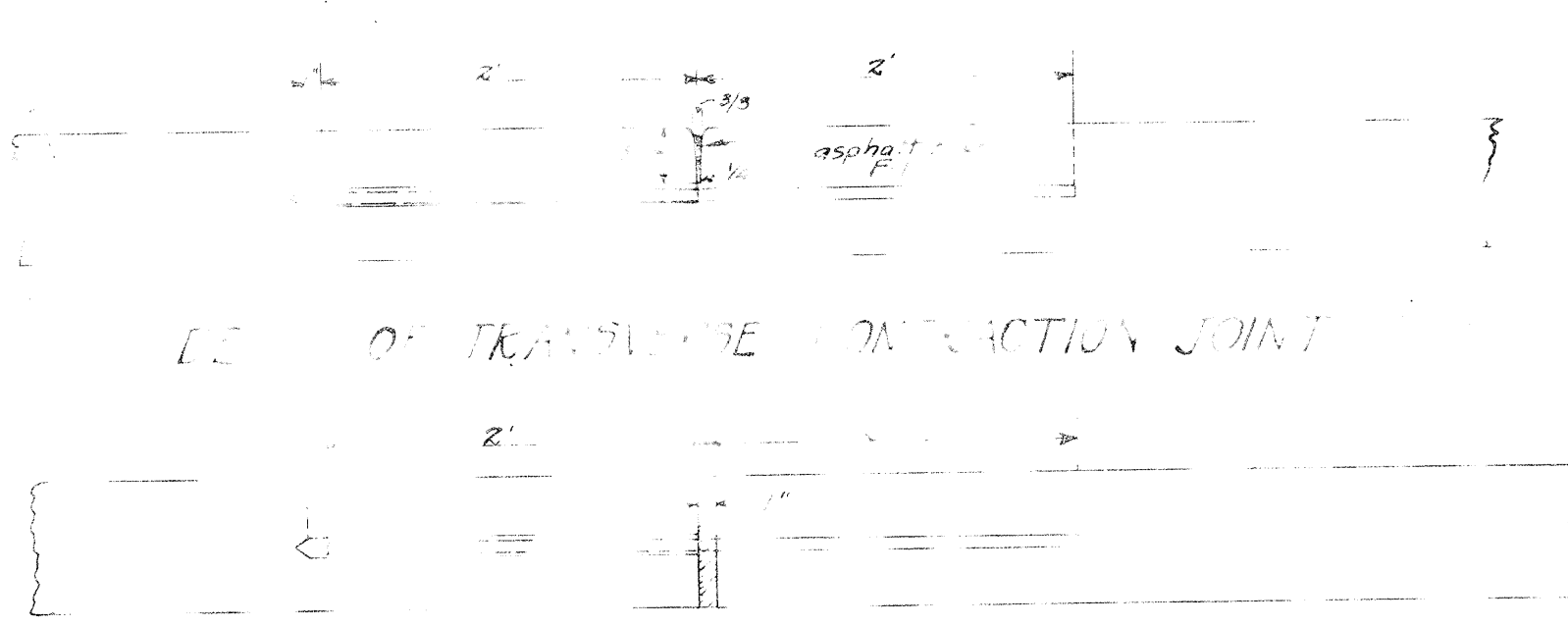


TYPE B



TYPE C

Centerjoint construction conforms to Std Drawing No 98



DETAIL OF PREMOULDED EXPANSION JOINT
Std. Con. Draw. No. 98

Note: All dowel and edge bars shall be supported by means of chairs of an approved type. Premoulded expansion joints shall be installed in such manner as to insure them to be vertical and straight.

All dowel and edge bars to be full round smooth bars with neat fitting, sliding sleeve at one end.

All joints to be edged with a beading tool of 1/4" radius.

Premoulded expansion joint material to meet specification of Sec. M-10, material details and to conform to the crown curvature and curb section and be neatly punched with 3/4" holes at proper spacing and dimensions.

Note: - Waste excavation to be dumped by contractor on land abutting the improvement as requested by land owners. Haul not to exceed 200 ft. from side line of road. Cost to be included in price bid for excavation.

Note: - North side shall be completed and opened to traffic before the south side is touched.