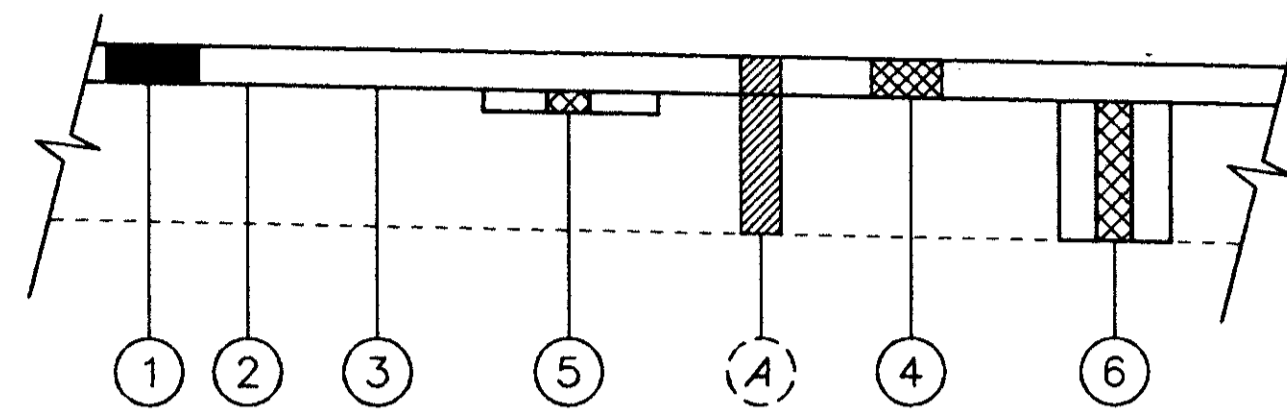
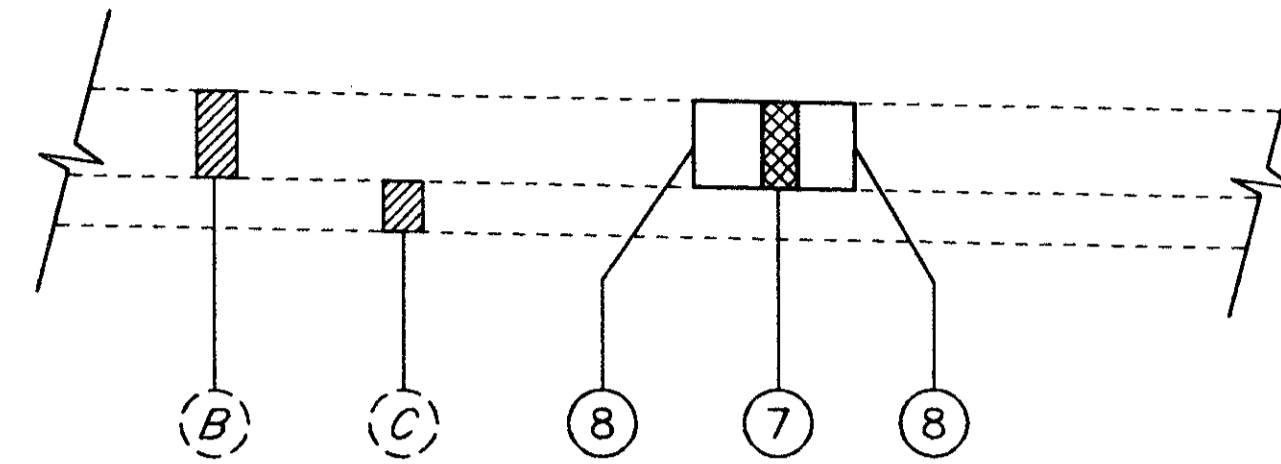


PAVEMENT DETAILS



- ① ITEM 448 - 1-1/4" ASPHALT CONCRETE SURFACE COURSE, TYPE 1, PG64-22
- ② ITEM 448 - 0" MINIMUM ASPHALT CONCRETE INTERMEDIATE COURSE, TYPE 2, PG64-22
- ③ ITEM 407 - TACK COAT
- ④ ITEM 254 - 1-1/4" PAVEMENT PLANING, BITUMINOUS
- ⑤ ITEM 251 - PARTIAL DEPTH PAVEMENT REPAIR
- ⑥ ITEM 253 - PAVEMENT REPAIR
- ⑦ ITEM 255 - FULL DEPTH PAVEMENT REMOVAL & RIGID REPLACEMENT, CLASS MS
- ⑧ ITEM 255 - FULL DEPTH PAVEMENT SAWING

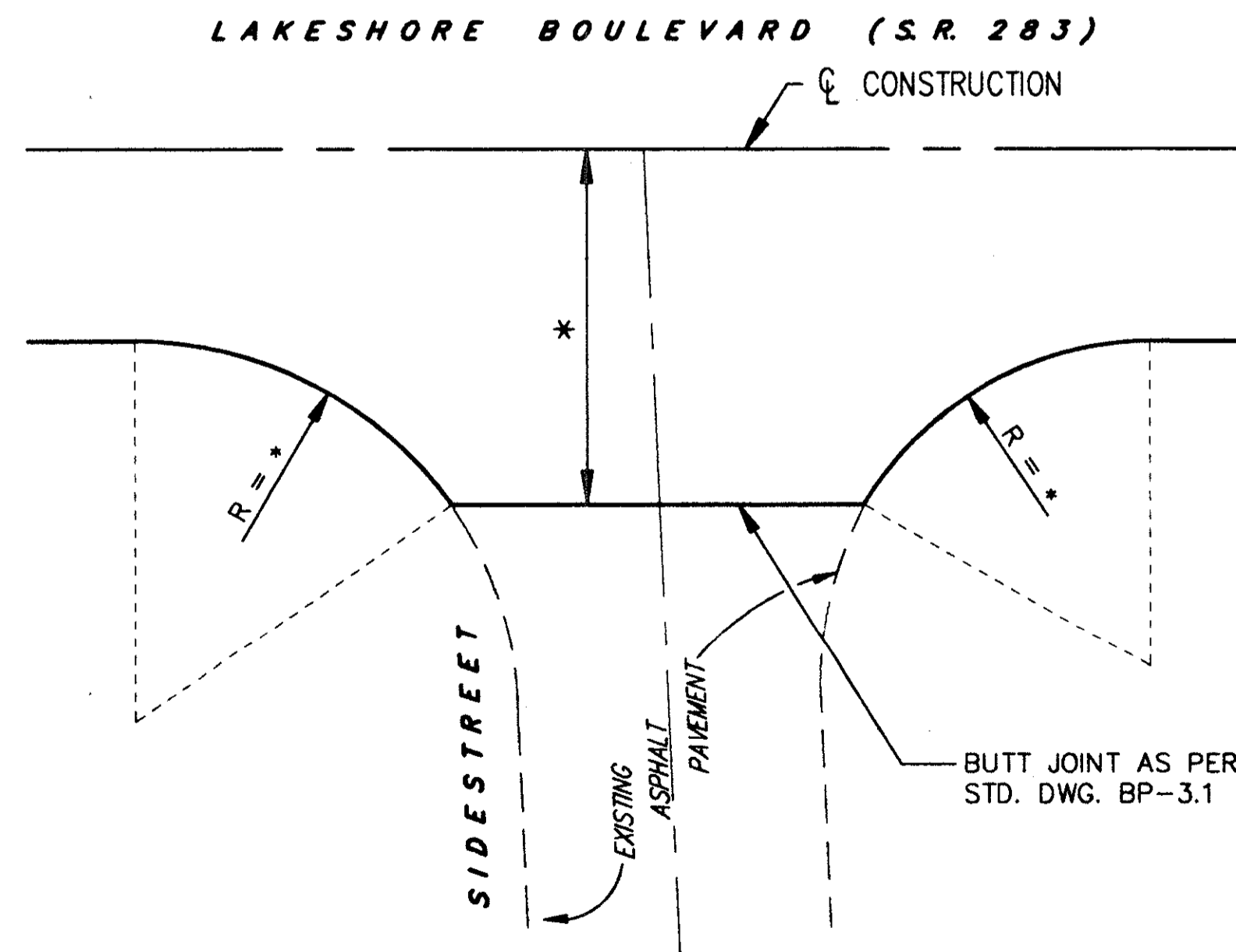


- (A) EXISTING ASPHALT CONCRETE (THICKNESS VARIES, 9" AVG)
- (B) EXISTING 10" REINFORCED CONCRETE PAVEMENT
- (C) EXISTING 6" SUBBASE

NOTE: ITEM 301 - BITUMINOUS AGGREGATE BASE, PG64-22, SHALL BE USED FOR ITEM 253 - PAVEMENT REPAIR

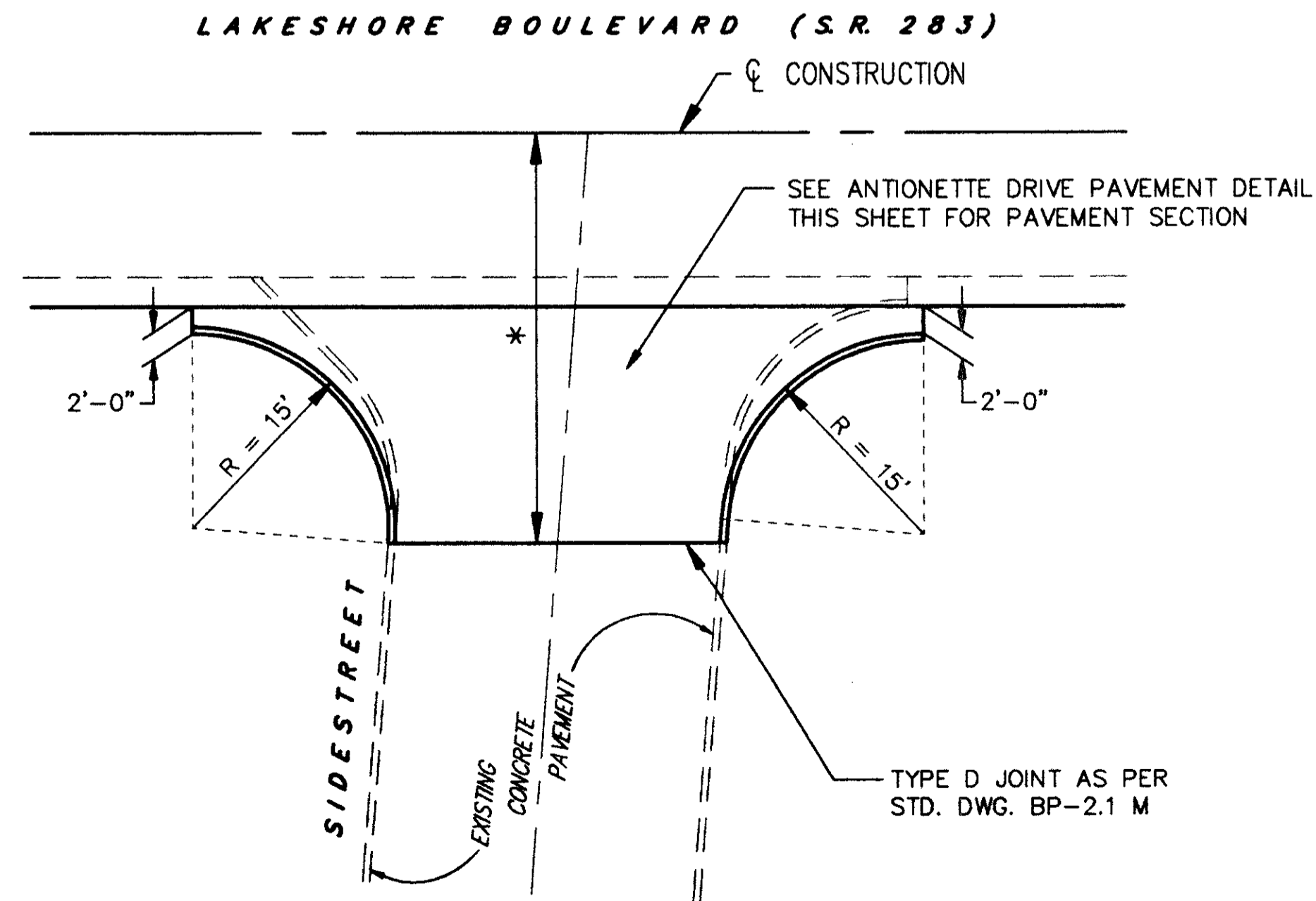
TYPICAL PAVEMENT REPAIR DETAILS

FOR CONTINGENCY QUANTITIES SEE GENERAL NOTE SHEET 8.

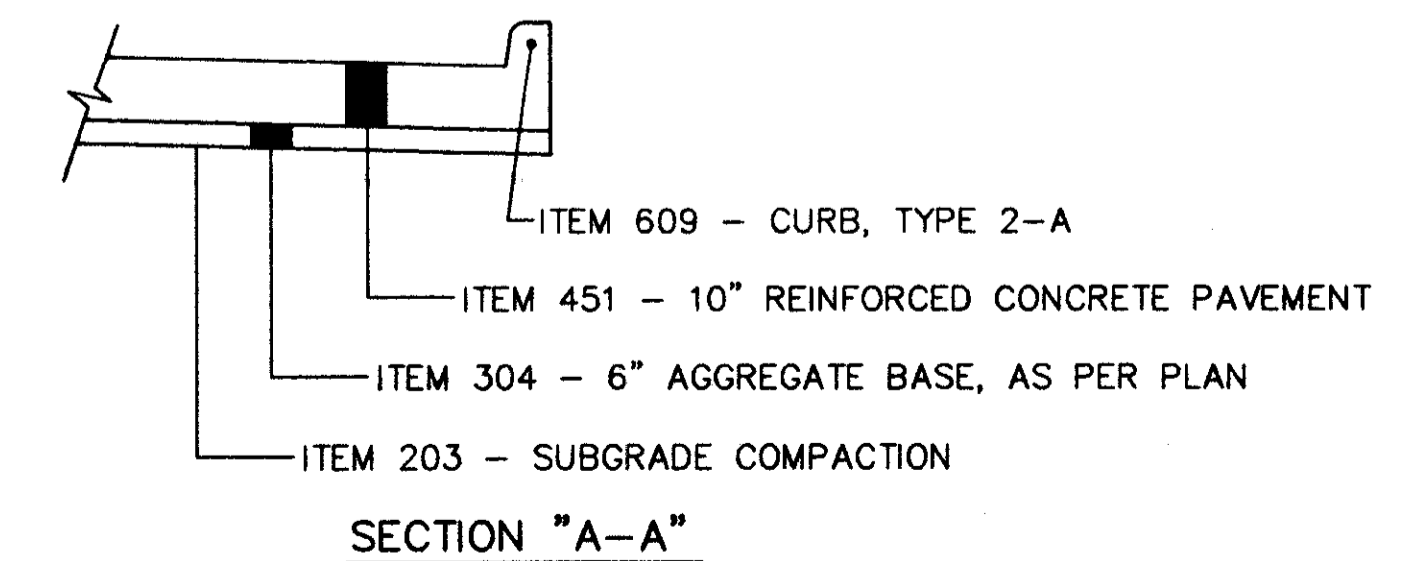


* AS SHOWN ON PLAN & PROFILE SHEETS

TYPICAL ASPHALT SIDESTREET INTERSECTION



ANTIONETTE DRIVE INTERSECTION



ANTIONETTE DRIVE PAVEMENT DETAIL