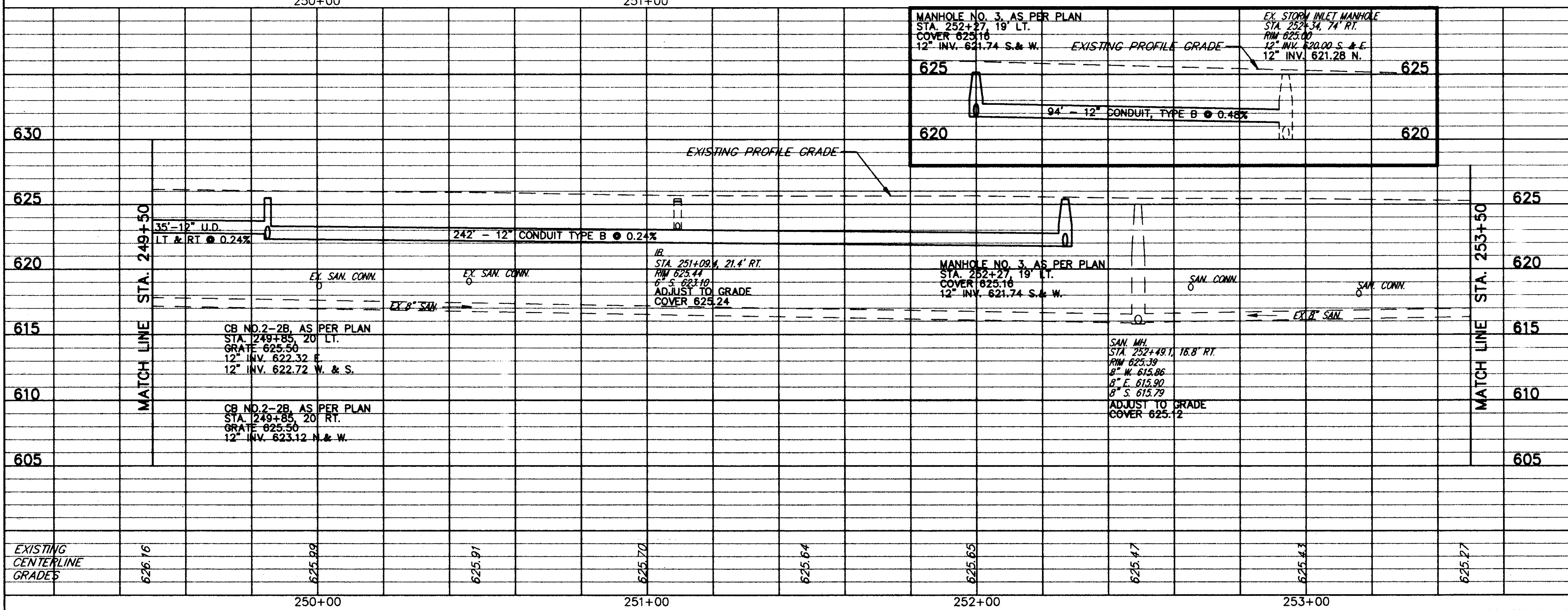


ITEM	DESCRIPTION	UNIT	QUANTITY
609	CURB, TYPE 6	LN. FT.	4.38
448	1-1/4" ASPH. CONC. SURFACE COURSE, TYPE 1, PG64-22	CU. YD.	0.7
448	0" MIN. ASPH. CONC. INTERMEDIATE COURSE TYPE 1, PG64-22	CU. YD.	0.7
448	1-3/4" ASPH. CONC. INTERMEDIATE COURSE TYPE 2, PG64-22	CU. YD.	10.4
411	6" STABILIZED CRUSHED AGGREGATE	CU. YD.	1.0
408	BITUMINOUS PRIME COAT (0.40 GAL./SQ.YD.)	GAL.	8.0
407	TACK COAT (0.05 GAL./SQ.YD.)	GAL.	1.0
407	TACK COAT (0.10 GAL./SQ.YD.)	GAL.	10.7
304	AGGREGATE BASE, AS PER PLAN	CU. YD.	4.8
301	7" BITUMINOUS AGGREGATE BASE, PG64-22	CU. YD.	3.9
254	1 1/4" PAVEMENT PLANNING, BITUMINOUS	SQ. YD.	116.4
253	PAVEMENT REPAIR	SQ. YD.	14.2
203	SUBGRADE COMPACTION	CU. YD.	7.8
203	EXCAVATION NOT INCLUDING EMBANKMENT CONSTRUCTION	CU. YD.	7.8
TOTALS			301.0

FOR TYPICAL SECTIONS SEE SHEET 3 THRU 6
 FOR BENCHMARKS SEE GENERAL NOTE SHEET 7
 FOR CROSS-SECTIONS SEE SHEETS 34 THRU 73
 FOR DRIVEWAY SCHEDULE & DETAILS SEE SHEET 79 & 80
 FOR PAVEMENT DETAILS SEE SHEET 81
 FOR TRAFFIC CONTROL DETAILS SEE SHEETS 84 THRU 104

ITEM 253 - PAVEMENT REPAIR (SEE DETAIL, SHEET 81)



REF	LOCATION	SQ.FT.	SQ.FT.	SQ.FT.	EACH
R-1	STA. 252+20 RT. TO STA. 252+35 RT.	70			
R-2	STA. 252+86 RT. TO STA. 253+50 RT.	290	266		1
TOTALS		360	266	50	1

REF	LOCATION	LN.FT.	LN.FT.	EACH	EACH	EACH	EACH	LN.FT.	LN.FT.
D-1	STA. 249+50 20' LT. TO STA. 249+85 20' RT.	10	1						25
D-2	STA. 249+50 20' RT. TO STA. 249+85 20' RT.	10	1						25
D-3	STA. 249+85 20' LT. TO STA. 249+85 20' RT.	40							
D-4	STA. 249+85 20' LT. TO STA. 252+27 19' LT.	242							
D-5	STA. 252+27 19' LT. TO STA. 252+34 74' RT.	94							
D-6	STA. 251+09.4, 21.4' RT.				1				
D-7	STA. 251+08 20.2' LT. TO STA. 253+50 24' LT.								242
D-8	STA. 252+77 36' RT. TO STA. 253+50 24' RT.								73
D-9	STA. 251+10 TO STA. 252+37, RT.	10							125
S-1	STA. 252+49.1, 16.8' RT.							1	
TOTALS		376	30	2	1	2	1	125	385

PLAN & PROFILE STA. 249+50 TO STA. 253+50

COPYRIGHT - DATE 01-18-98 09:35, CT CONSULTANTS INC. C:\9467\283MPP19.DWG Scale 1"=20'